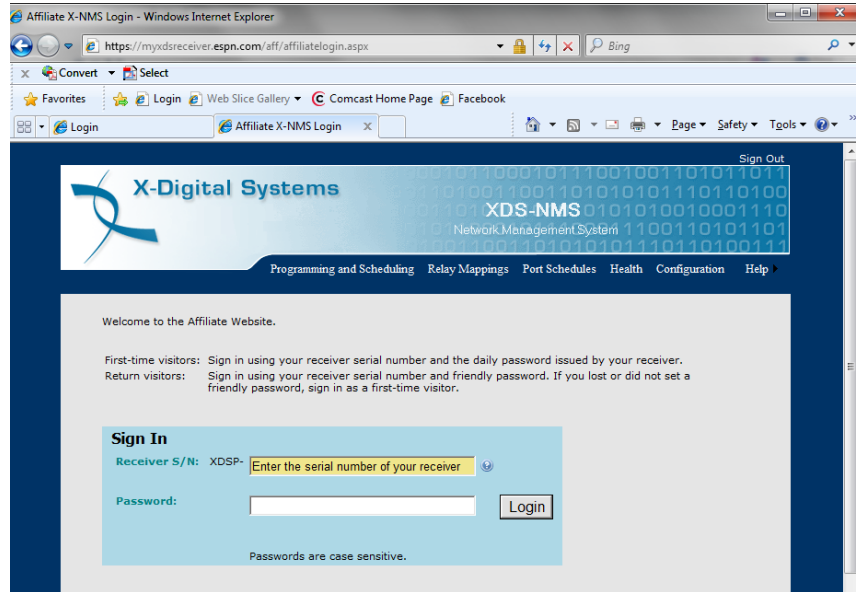


ESPN XDS Satellite Receiver Configuration Information

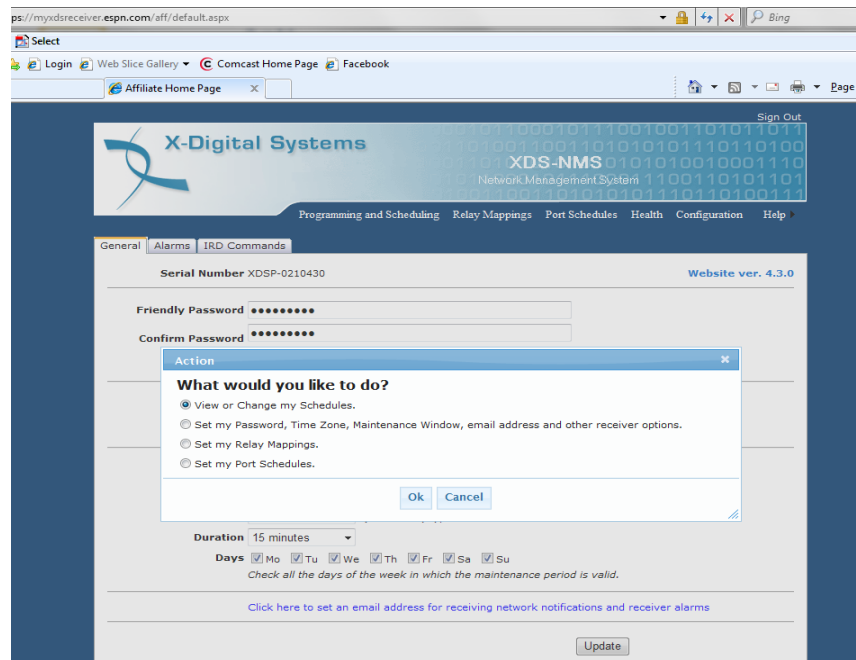
To access the web-based scheduler for the ESPN XDS receivers, go to the following website:

<https://myxdsreceiver.espn.com/>



Example #1

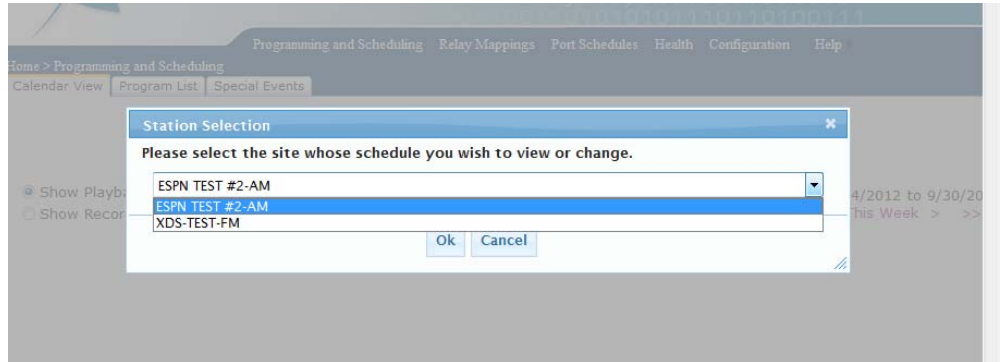
You will need to login with you're the receiver serial number and your friendly password. (If you have not logged in to the site before, you will need to obtain the daily password from the receiver, then create a friendly password.)



Example #2

Once you have logged in, choose “View or Change my Schedules” (see Example #2)

You will be prompted to “Please select the site whose schedule you wish to view or change.” Each port on the receiver is considered a “site”. Each site can have an independent schedule and authorization set (Example #3)



Example #3

Once you select a site, the screen will display a grid of weekdays with columns of time indicating the existing audio schedule for that port. In example #4, the ESPN Radio schedule is displayed. Moving the cursor over one of the schedule hours will provide additional information about that show and how it is scheduled on the receiver (the receiver can be programmed to play live or store content for playback at a later day/time.)



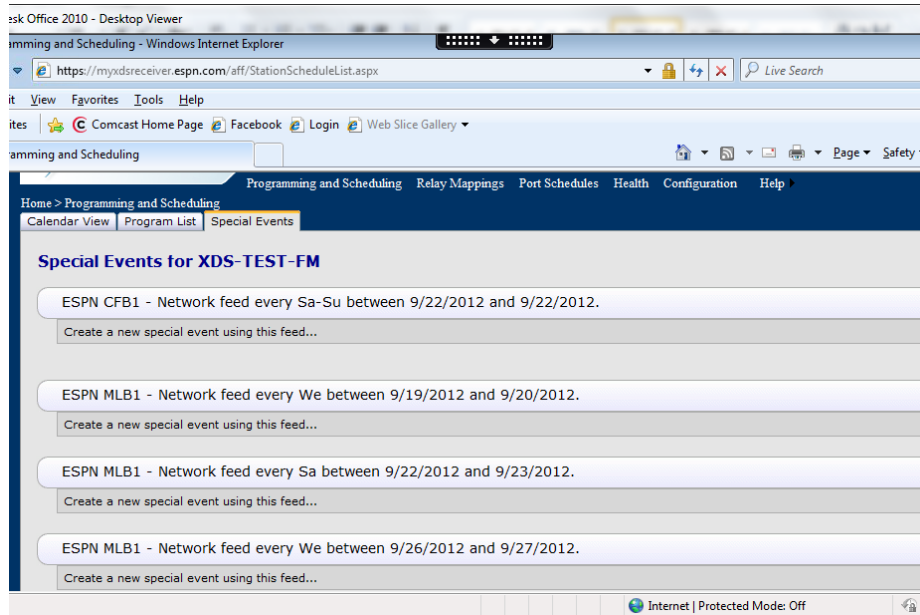
Example #4

Special Events

ESPN airs some games, or events, on the main 24/7 ESPN Radio channel. Other games or events are aired on Alternate channels. To allow for flexibility of scheduling, there is an option that overrides all other scheduling for an audio port. This method of scheduling is called Special Events (see Example #5).

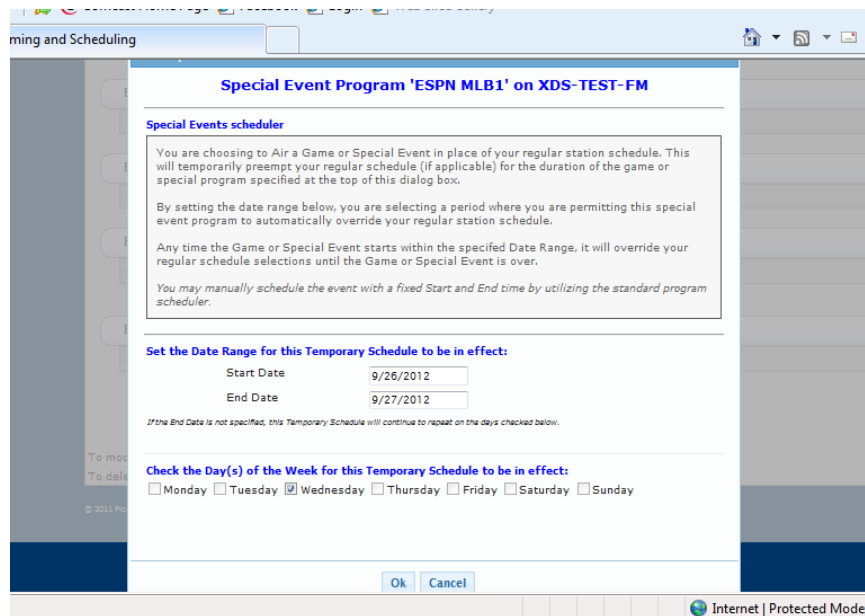
If an event is not scheduled on the main 24/7 channel, the receiver can be programmed to override the audio on the port normally designated for ESPN Radio.

Click the "Special Events" tab. There will be a list of dates and times for events, such as ESPN CFB1 and ESPN MLB1 (see example #5). Scroll down until you find the desired broadcast. Note the Special Event broadcast time will be listed as a particular weekday between specific dates.

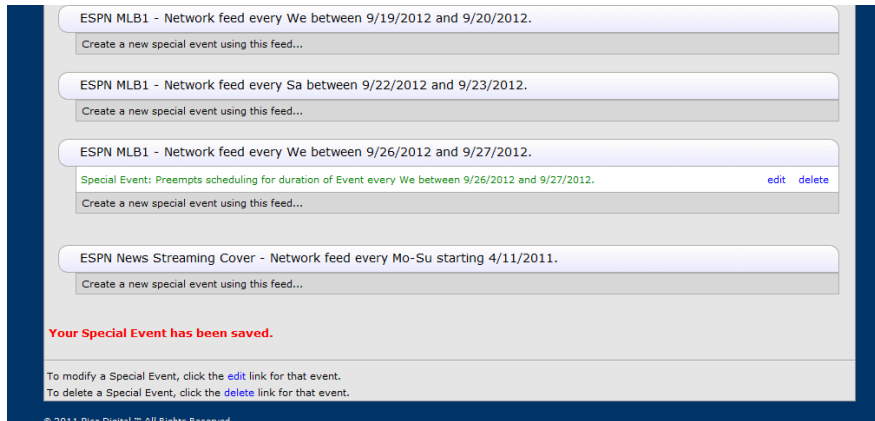


Example #5

Once you make your selection, a confirmation window will open (Example #6). Scroll down to review the changes and press OK. The Special Events screen will now indicate change has been saved (Example #7)



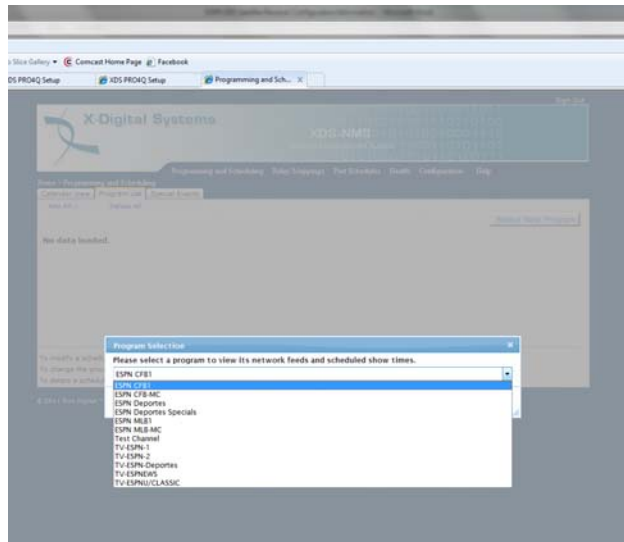
Example #6



Example #7

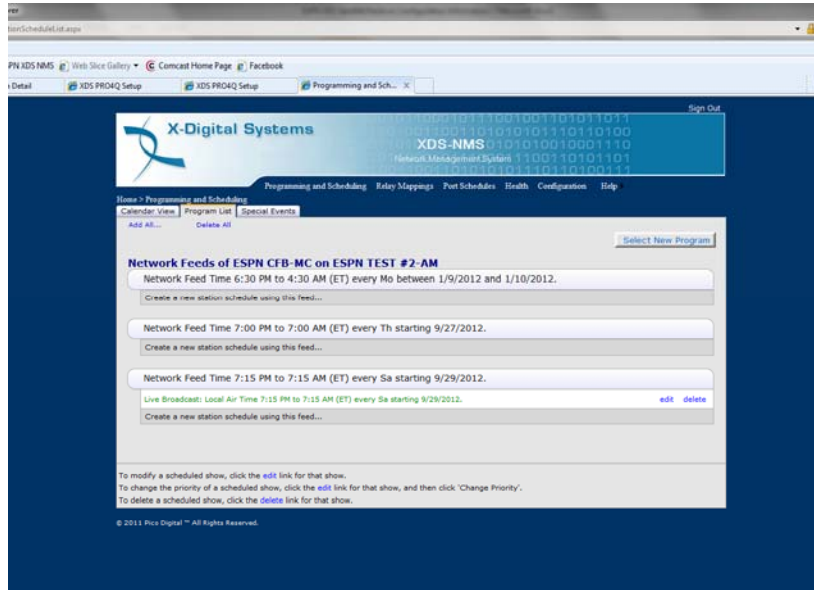
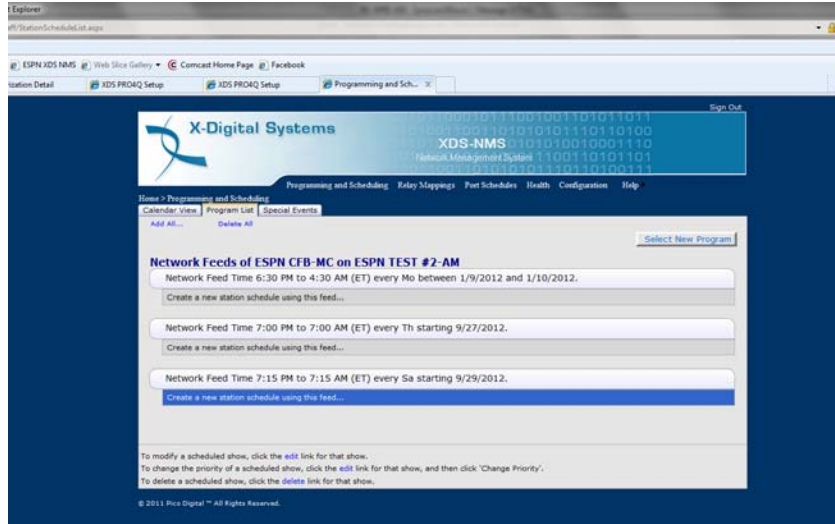
Program Lists

To schedule a new program to air on a desired port, select the Program List tab at the top of the page. This will present a list of programs authorized for that port. **IMPORTANT NOTE:** In the XDS platform, each port is considered a separate site, so authorized programs can vary from one port to another.



Example #8

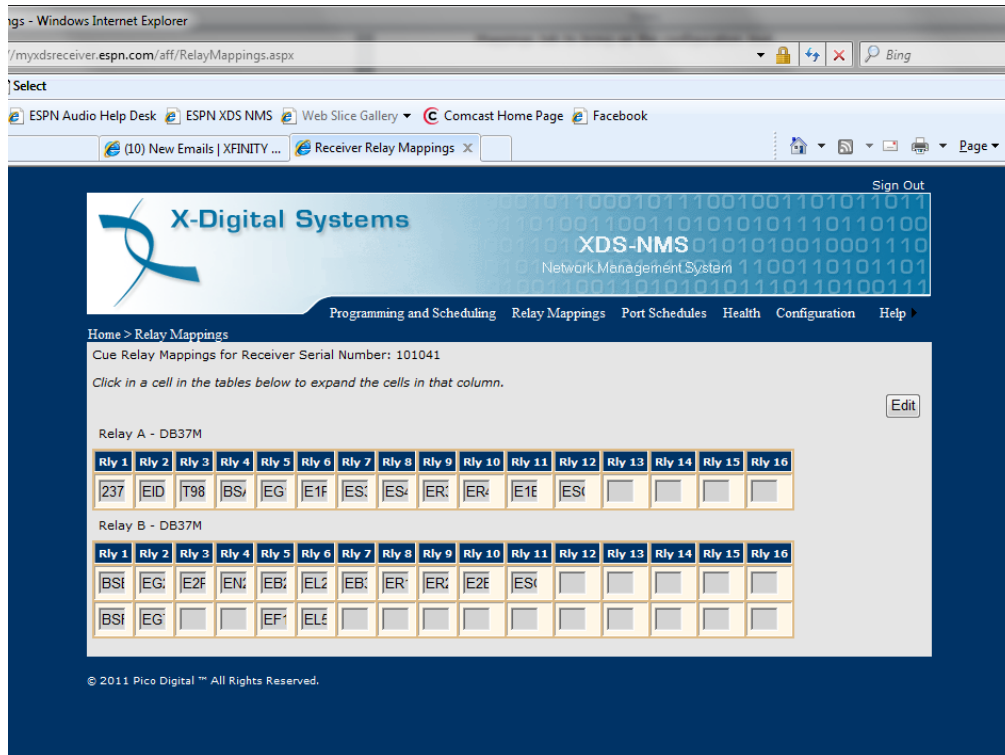
Scroll down until you find the desired broadcast. Note the network feed time for this special event will be listed as a particular weekday between specific dates.



IMPORTANT NOTE: The receiver will not allow you to schedule conflicting events to an audio port. The website will alert you to any scheduling “conflicts”. In this case, you will be prompted to specify priority of the program in the schedule.

Netcue Relays

There are also two relay ports that can be programmed through the XDS scheduler. Click on the Relay Mappings tab to bring up the configuration tool.



Example #8

Click the Edit button which will allow you to add the cue codes for the ports. Cueing for audio port A is set up on RELAY A; audio port B is set up for RELAY B. See Example #8

It's important to note that since each program is assigned a specific PID, the relay ports can be set up so multiple shows can use the same relay. The relays are also stored when the show is recorded in the receivers hard drive so they will function when the show plays out at a later time.