



## **CONTACT INFORMATION**

Mining Records Curator  
Arizona Geological Survey  
1520 West Adams St.  
Phoenix, AZ 85007  
602-771-1601  
<http://www.azgs.az.gov>  
[inquiries@azgs.az.gov](mailto:inquiries@azgs.az.gov)

The following file is part of the

Arizona Department of Mines and Mineral Resources Mining Collection

## **ACCESS STATEMENT**

These digitized collections are accessible for purposes of education and research. We have indicated what we know about copyright and rights of privacy, publicity, or trademark. Due to the nature of archival collections, we are not always able to identify this information. We are eager to hear from any rights owners, so that we may obtain accurate information. Upon request, we will remove material from public view while we address a rights issue.

## **CONSTRAINTS STATEMENT**

The Arizona Geological Survey does not claim to control all rights for all materials in its collection. These rights include, but are not limited to: copyright, privacy rights, and cultural protection rights. The User hereby assumes all responsibility for obtaining any rights to use the material in excess of "fair use."

The Survey makes no intellectual property claims to the products created by individual authors in the manuscript collections, except when the author deeded those rights to the Survey or when those authors were employed by the State of Arizona and created intellectual products as a function of their official duties. The Survey does maintain property rights to the physical and digital representations of the works.

## **QUALITY STATEMENT**

The Arizona Geological Survey is not responsible for the accuracy of the records, information, or opinions that may be contained in the files. The Survey collects, catalogs, and archives data on mineral properties regardless of its views of the veracity or accuracy of those data.

04/14/87

ARIZONA DEPARTMENT OF MINES AND MINERAL RESOURCES FILE DATA

PRIMARY NAME: SLEEPY HOLLOW MINE

ALTERNATE NAMES:

PATENT MS 4789

MARICOPA COUNTY MILS NUMBER: 596

LOCATION: TOWNSHIP 7 N RANGE 3 E SECTION 16 QUARTER SE  
LATITUDE: N 33DEG 56MIN 51SEC LONGITUDE: W 112DEG 02MIN 57SEC  
TOPO MAP NAME: DAISY MTN - 7.5 MIN

CURRENT STATUS: EXP PROSPECT

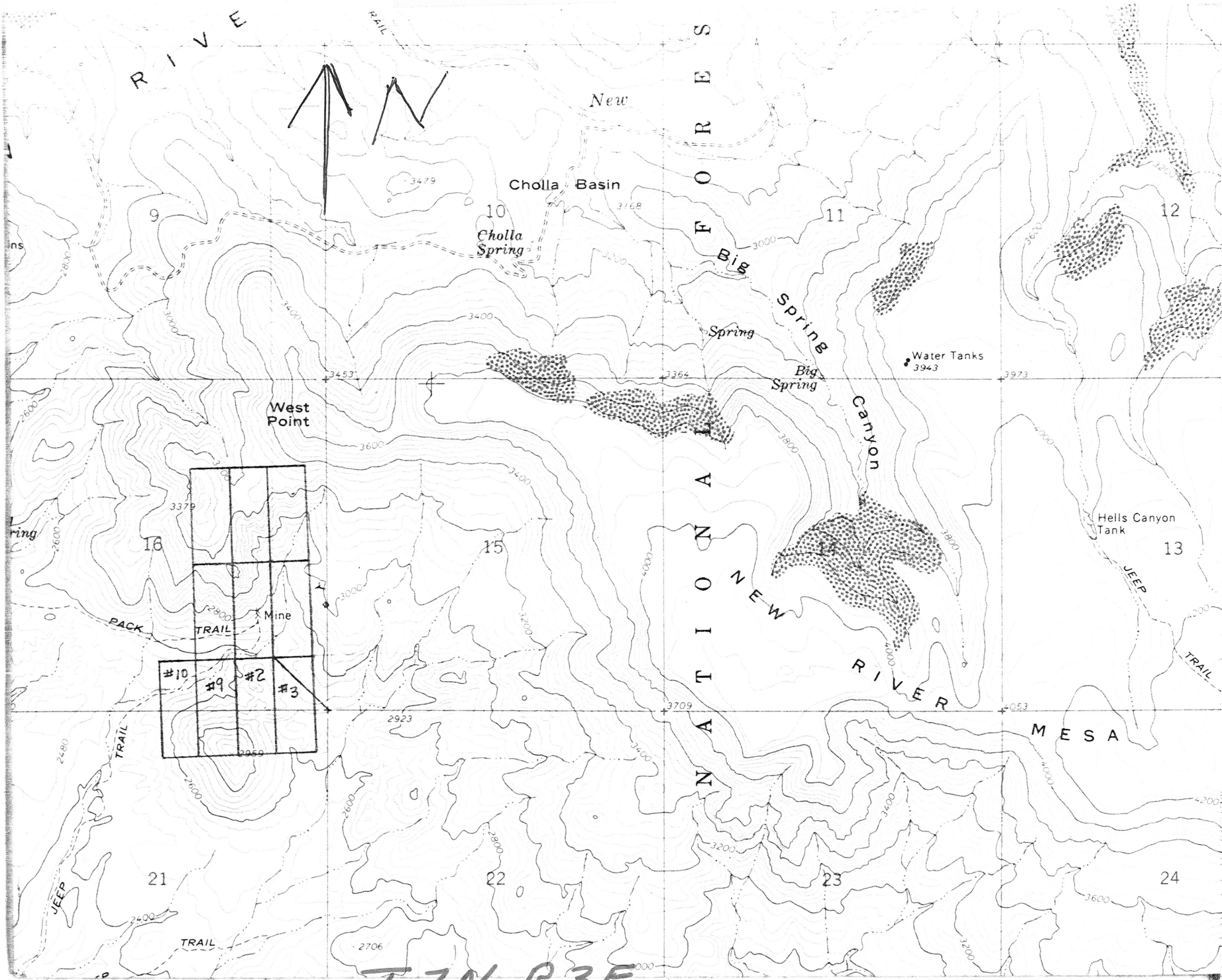
COMMODITY:

COPPER OXIDE

BIBLIOGRAPHY:

USGS DAISY MTN QUAD  
BLM MINING DISTRICT SHEET  
BLM PLAT 4789  
ADMMR SLEEPY HOLLOW FILE

SLEEPY HOLLOW CLAIMS, MARICOPA COUNTY, ARIZONA



T. 7 N., R. 3 E.

SLEEPY HOLLOW MINE (Dump?)

MARICOPA COUNTY

Bill Bell of New River phoned for information as to financing a leaching plant on his 109 unpatented claims near New River. It was suggested he get in contact with Rancher's Exploration and Development Company, Miami; Del Peterson, Carefree; and with Phillips Petroleum Company, Prescott. GW WR 11/1/71

---

Accompanied Mr. Jett on field examination of the Rupard, Millay, Bell prospect + five miles northeast of New River. Here ramifying shears in a silicified granitic rock are more or less mineralized with cu oxides and a preponderance of manganese oxides. Due mainly to the alteration (silicification) of the host rock, the area perhaps warrants additional exploration. GW WR 11/9/71

---

KAP WR 1/2/81: A field visit was made to Sleepy Hollow Mine in New River District, Maricopa County.

---

KAP WR 1/17/86: Charles R. Merritt, 6030 E. Princess Dr., Mesa, Arizona 85203 has relocated a number of properties, in particular the Pee Gee (file) and the Sleepy Hollow (file), both in the New River area of Maricopa County.

---

NJN WR 9/26/86: Charles Merritt, of Merritt Mining and Exploration, visited and reported that they are beginning examination and clean out of workings and sampling at the Sleep Hollow (f) Maricopa County.

---

DO NOT REPRODUCE



STATE OF ARIZONA  
DEPARTMENT OF MINERAL RESOURCES

MINERAL BUILDING, FAIRGROUNDS  
PHOENIX, ARIZONA 85007



November 16, 1971

TO: John H. Jett, Director  
FROM: Glen Walker, Field Engineer  
SUBJECT: Visit to Millay, Rupard and Bell copper prospect

On November 9, 1971, the subject property, consisting of 109 leased unpatented mining claims, was superficially examined. The property is approximately five miles northeast of the village of New River, a new settlement thirty-two miles north of Phoenix. The access road, for the most part, is in poor condition presently.

The oxide copper mineralization occurs in sheared granite and varies in width from a few inches to perhaps  $1\frac{1}{2}$  feet. The old workings consist of an adit  $\pm$  eighty feet in length which trends north and south for sixty feet to a recent small untimbered stope. Due to the lack of a ladder, the face of the stope is inaccessible, but it appears to be about twenty feet high on a rather flat-dipping mineralized shear. Perhaps seventy-five feet above the adit are two shafts within ten feet of each other. The west one appears to be thirty to forty feet deep, and was not sunk on mineralization, however along the east side there is a strong horizontal slickenside. Along the west side of the east shaft is another horizontal slickenside, which strikes N25-30°E and dips steeply east. On the east side of this shaft is a shear containing copper mineralization striking N35-45°E with a steep dip to the south-east. This shaft is eight to ten feet deep.

About 400-500 feet east of these workings a canyon trends northeasterly and roughly marks the contact of the granite and a shist of variable composition. Following this canyon for perhaps a half-mile no mineralization was noted.

Although, not visited there are reported to be several other small excavations in the granite on mineralization of various trends.

GW:dhp

*G. Walker*

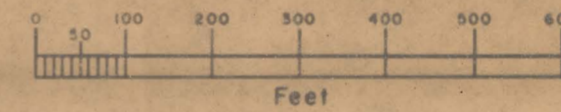
T. 7 N., R. 3 E., G. & S. R. M.

MINERAL SURVEY  
No. 4789  
ARIZONA

CLAIM OF  
MARICOPA HEART OF ARIZONA  
MINING & MILLING CORP.

KNOWN AS THE  
Sleepy Hollow #1 LODE

SITUATE IN  
Sec. 16, T. 7 N., R. 3 E., G. & S. R. M.  
MARICOPA COUNTY  
New River Mining District  
Arizona Land District  
Lat. 33°56'47.2"N., Long. 112°03'07.5"W.,  
at Cor. No. 2, Sleepy Hollow #1



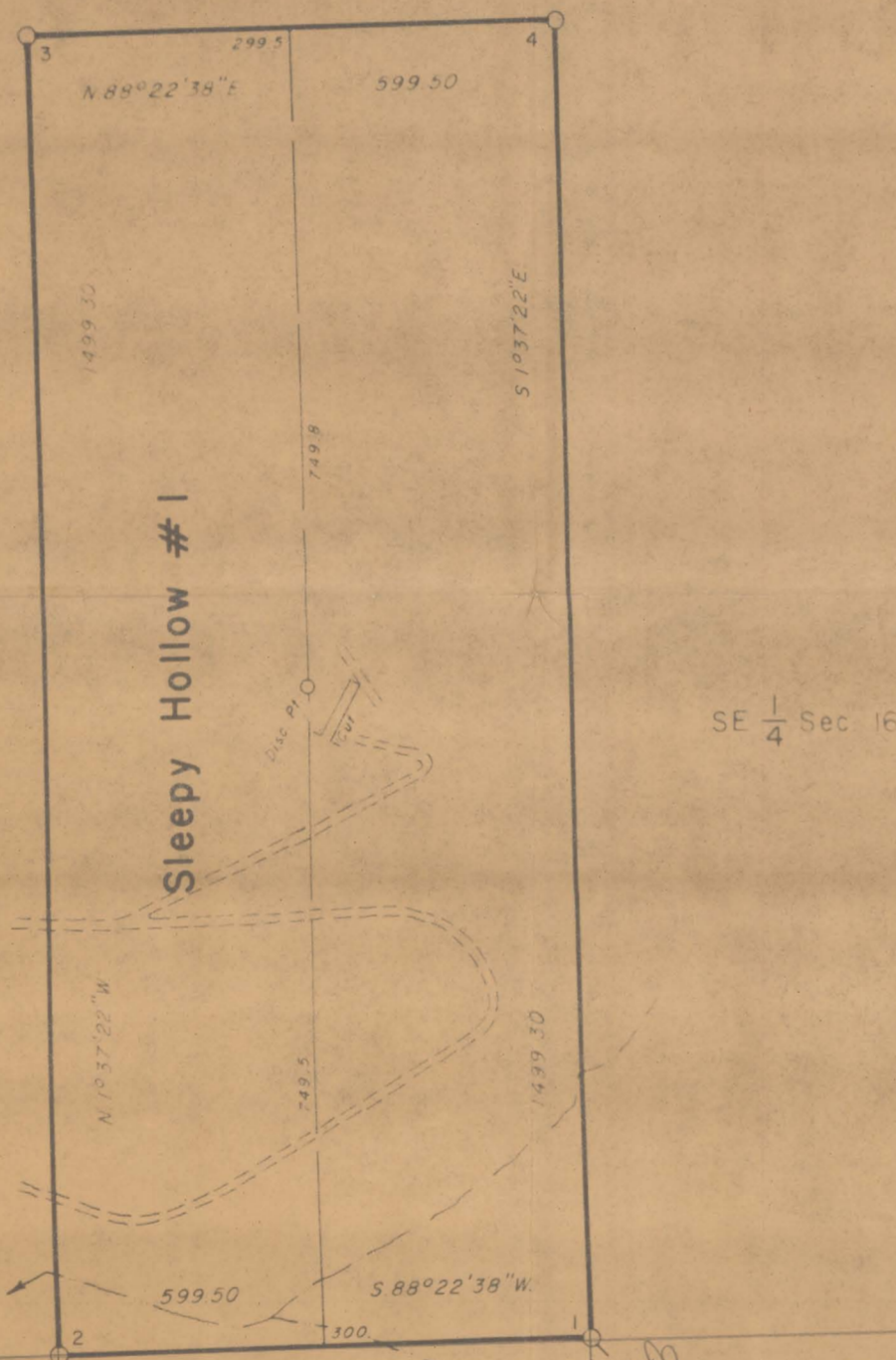
Magnetic Declination 14°30'E.

Surveyed, July 31 to Oct. 15, 1976,  
By Harvey W. Smith, Mineral Surveyor.

UNITED STATES DEPARTMENT OF THE INTERIOR  
BUREAU OF LAND MANAGEMENT  
Arizona State Office

Phoenix, Arizona, Aug. 22, 1978  
I hereby certify that this plat of Mineral Survey  
No. 4789, Arizona, is strictly conformable to the field notes  
of said survey which have been examined and approved.

Boyd S. Owens  
Chief, Branch of Cadastral Survey



SE 1/4 Sec. 16

To Cor. of Secs. 15, 16, 21 & 22, T. 7 N., R. 3 E.

WJH