

# HDMI 4K Interface board for SONY FCB ER8300

This information is brought to you by:



**ELECTRONIC GROUP, INC**  
480-635-8400 p \* aegis-g2@aegiselect.com  
http://www.aegis-elec.com

## HDMI 4K interface board

for **SONY FCB ER8300** cameras.

The board transmits and improves the signal of the 4K camera to provide an optimum image quality. All camera resolutions and frame rates are supported. You will take advantage of the full range of HD resolutions this camera offers (up to 2160p29.97)



## Features

- Supports new Sony FCB-ER8300
- Digital TMDS video input from camera
- 2160p, 1080i, 1080p and 720p output support
- 25Hz, 29.97Hz, 50Hz and 59.94Hz frame rates
- HDMI output 1.4b up to 15m/49ft.
- Internal Micro Coaxial Cable up to 400mm
- Board and Camera management via RS232/TTL
- Mini-USB connector for camera software update
- Push buttons for zoom, freeze and more
- Video format selection by micro switch
- Push buttons for Board Management (external)
- Power supply for external peripherals 5V (1.5A max)
- Low power sleep mode for mobile applications

### ➔ Video output from HD to 4K

The HDMI interface board supports the 4K video format in Ultra HD resolution (3840 x 2160) with output flexibility. Depending on your application and configuration, you can select the format you need from HD to 4K.

### ➔ Auxiliary power output

To maximize the integration solutions of the interface board and use different ways to transmit video (i.e. signal over internet CAT5/CAT6 or fiber optic), our 4K board features an auxiliary 5V/1A output

### ➔ Compact size

Highly compact

## APPLICATIONS

### Medical

#### *Redefining imaging for surgery*

4k imaging lets surgeons view delicate procedures in the OR with far greater detail.

Thanks to the 4k technology, fine structures can be identified with greater precision, offering surgeons a clearer picture during open surgery or minimally invasive procedures.



### Broadcast / Sport

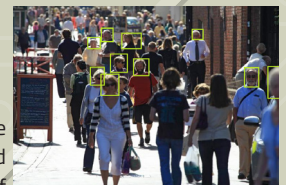
#### *4K broadcast signals new era in live sport*

4K picture gives the viewer at home the impression of actually being at the match and offers to the audience an immersive new experience.

### CCTV industries

#### *4K surveillance with extra intelligence*

The major advantage is the extended picture resolution and the ability to reduce the number of cameras normally used in open spaces (reduced installation costs) One 4K monitor can display 4x4 scaled D1-size image which is very effective for viewing multiple cameras.



**Police, Defence... and many more areas.**

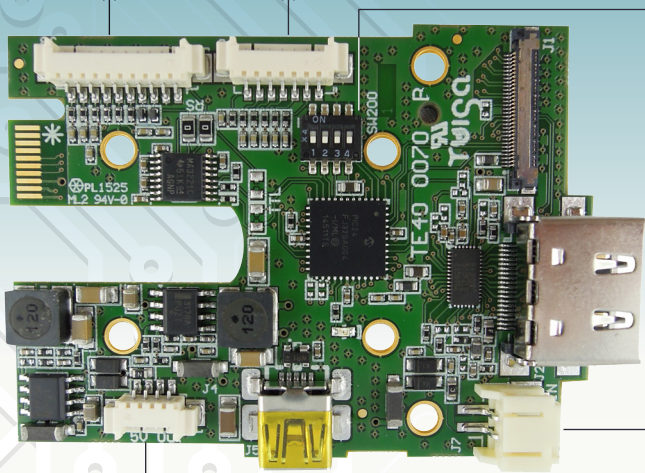
# Onboard Connector

J3	VISCA
10	Cde_Sys6
9	Cde_Sys5
8	Cde_Sys4
7	Cde_Sys3
6	Cde_Sys2
5	Cde_Sys1
4	TxD
3	RxD
2	GND
1	N/B

J6	GPIO
7	Cde6
6	Cde5
5	Cde4
4	Cde3
3	Cde2
2	Cde1
1	GND

1	2	3	4	FCB-EV
OFF	OFF	OFF	OFF	External (factory setting)
ON	OFF	OFF	OFF	1080p29.97*
OFF	ON	OFF	OFF	1080p25*
ON	ON	OFF	OFF	1080i59.94
OFF	OFF	ON	OFF	1080i50
ON	OFF	ON	OFF	720p59.94
OFF	ON	ON	OFF	720p50
ON	ON	ON	OFF	720p29.97*
OFF	OFF	OFF	ON	720p25*
ON	OFF	OFF	ON	2160p29.97
OFF	ON	OFF	ON	2160p25
ON	ON	OFF	ON	1080p50
OFF	OFF	ON	ON	1080p59.94
ON	ON	ON	ON	Ept mode

\* Output indicates that the same image is output twice



J4	Power out
4	GND
3	GND
2	+5V
1	+5V

J5	Mini USB
1	VBUS
2	D-
3	D+
4	N/C
5	GND

J7	Power in
1	V+
2	GND

Functions	Specifications
Digital video output	HDMI 1.4b
Video output standard configuration	Micro switches or with RS232/VISCA protocol
Camera setting	VISCA, GPIOs
Connector	HDMI Type A
Power and consumption	6 to 12V DC, 3.6 W (including camera) , 0.4 W (sleep mode)
Environmental	-5°C to 60°C (operating) ; -20°C to 60°C (storage)
Regulation	EMC FCC part 15, PCB : UL 94 V0
Dimensions (mm)	63 (L) x 47 (W) x 17 (H)
Weight (g)	17

Product	HDMI 4K conversion module for SONY FCB ER8300
Electronic interface board	: 6? ; 2=
Accessories set	: 6? ; 2= 25ST MEW
Camera micro coaxial cable	USL20-30SS-005-C Cable assembly 120 mm long (4.7 inches)
Power input cable	2 ways harness, 200 mm long (7.8 inches)
Visca wire	10 ways harness, 200 mm long (7.8 inches)
GPIO wire	7 ways harness, 200 mm long (7.8 inches)
Mechanical parts	4 x screws / 4 x nylon spacers