

NEWLYWED QUILT

A Free Quilt Pattern by Birch Fabrics

Mod Nouveau, creates a marriage of Mid Century Modern and Art Deco styles to create a modern yet eclectic newlywed quilt. With accents of his and hers, this collection is focused on striking geometrics softened with a beautiful shade of blush. We included a bit of metallic gold to really jazz it up and make it perfect for any stylish pad.



 birchfabrics

100% ORGANIC FABRIC, MADE WITH *love*, NOT PESTICIDES.

www.birchfabrics.com | info@birchfabrics.com



THE DEETS

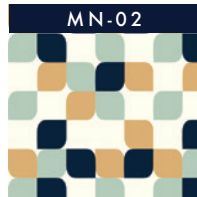
FINISHED QUILT SIZE - Queen (87" x 102")
 FINISHED BLOCK MEASURES - 14" Square
 TECHNIQUE - Piecing
 SEAM ALLOWANCE - 1/4"
 SKILL LEVEL - Beginner
 WOF - Width of fabric, given the fabric is 45" wide,
 without trimming selvedge.



Featuring fabric from



Elk Diamond



Geo Tear Drop



Honeycomb Blush



Honeycomb Mint



Horned Lace



Oblong Hex Blush



Oblong Hex Mint



Offset Navy



Roses Blush



Stripe Mint



Stripe Blush

FABRICS LIST YARDAGE CUT LIST

Elk Diamond	2/3 yd	(4) 12" squares
Geo Tear Drop	2/3 yd	(4) 12" squares
Honeycomb Blush	2/3 yd	(4) 12" squares
Honeycomb Mint	2/3 yd	(4) 12" squares
Horned Lace	2/3 yd	(4) 12" squares
Oblong Hex Blush	2/3 yd	(4) 12" squares
Oblong Hex Mint	2/3 yd	(4) 12" squares
Offset Navy	2/3 yd	(4) 12" squares
Roses Blush	2/3 yd*	(4) 12" squares. *Additional 6 yards for backing.
Stripe Mint	1 1/8 yds	(3) 12" squares, (10) 2.5" x WOF strips to make binding.
Stripe Blush	1 1/3 yds	(3) 12" squares, (35) 1.5" x 14" strips, (12) 1.5" x WOF strips
Solid Blush	1/2 yd	(10) 4.5" squares, cross cut into (20) triangles, using template (B).
Solid Gold	1/3 yd	(9) 4.5" squares, cross cut into (18) triangles, using template (B).
Solid Mineral	1/3 yd	(9) 4.5" squares, cross cut into (18) triangles, using template (B).
Solid Dusk	2 3/4 yds	(28) 4.5" squares, cross cut into (18) triangles, using template (B). Also for Solid Dusk: (84) 1.5" x 12" strips, (84) 1.5" x 14" strips.

100% ORGANIC FABRIC, MADE WITH love, NOT PESTICIDES.



PIECING BLOCKS

1. Take all (42) 12" focal print squares, and use template (A) to cut off the corners of each. See FIG. 1.
2. Sew solid triangles cut from template (B) onto all 4 corners of each focal print. See FIG. 2. Press seams toward to solid triangle. Use FIG. 4 on page 4 for color reference. Square up your blocks to measure 12" x 12".
3. Use (2) of the 1.5" x 12" Solid Dusk strips on the vertical sides of each hexi block. See FIG. 3. Press seams toward the Solid Dusk sashing.
4. Use (2) of the 1.5" x 14" Solid Dusk strips on each horizontal size of each hexi block. See FIG. 3. Press toward the Solid Dusk sashing. Again, square up your block.

FIG. 1

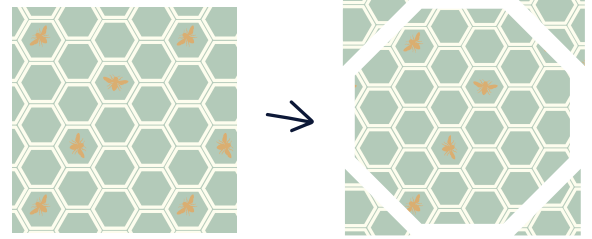
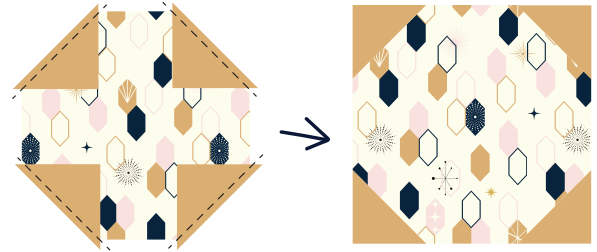


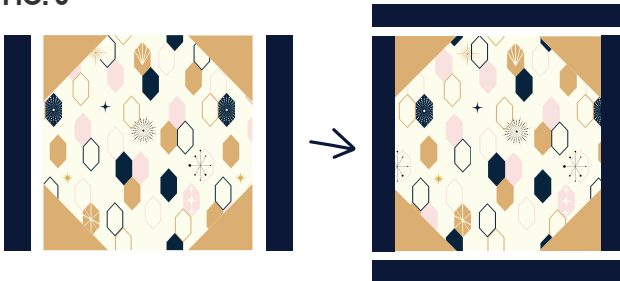
FIG. 2



PIECING & JOINING ROWS

5. Once all of your (42) 14" square blocks are complete, start forming your rows by using (1) 1.5" x 14" strip of Stripe Blush in between each block, so that each row will have a total of (5) vertical strips and (6) blocks per row. Use FIG. 4 on page 4 as your reference. Press seam allowance toward the Solid Dusk sashing.
6. Take the (12) 1.5" x WOF Stripe Blush pieces and join them, two at a time, using a diagonal seam (FIG. 5 on page 5) to make (6) 1.5" x 90" pieces. Press the seams open, or in preferred method. Sew long strips to the bottoms of rows 1 - 6.
7. Sew each row together from top to bottom to finish your quilt top. Press each seam toward the Solid Dusk sashing.

FIG. 3



FINISH YOUR QUILT!

8. We used (2) three yard pieces sewn along the selvedge side of Roses Blush for the backing. To make the binding, we cut (10) 2.5" x WOF strips along the grain of the Stipe Mint fabric. Use a diagonal seam (FIG. 5 on page 5) to join all (10) strips and proceed with your favorite binding method. You can find some great tutorials on the web for this.





FIG. 4

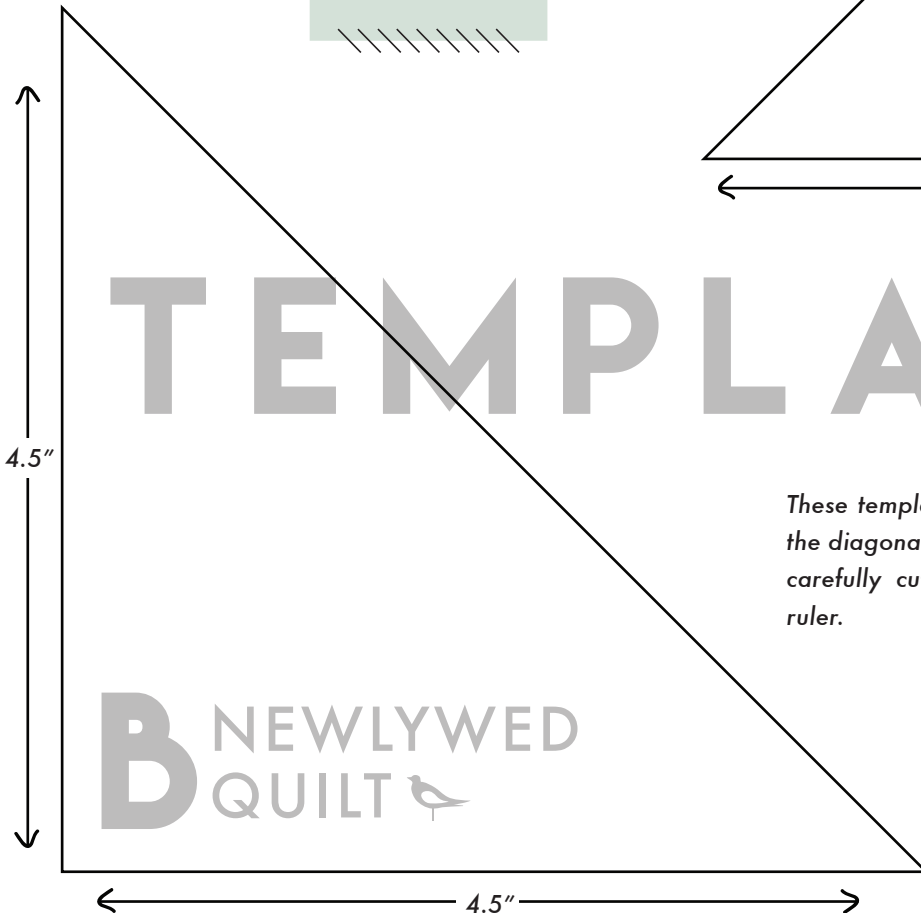
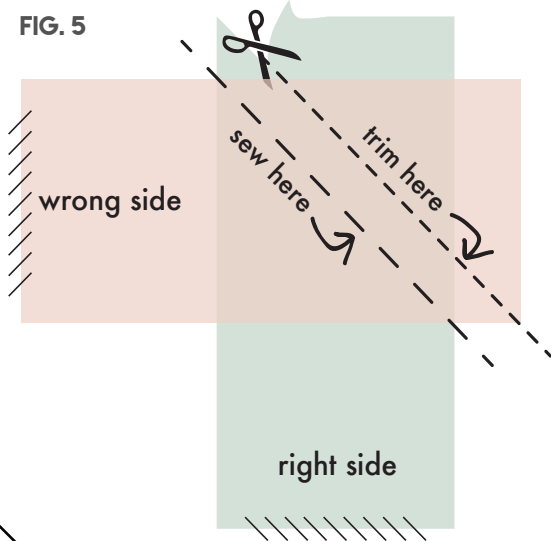




HOW TO SEW A DIAGONAL SEAM!

To sew long strips of sashing or binding together, try a diagonal seam! This will give your quilt a cleaner and tidier finish. Follow the diagram below, and don't forget to trim and press you seam allowance!

FIG. 5



TEMPLATES

These templates are simply squares cut in half on the diagonal. To avoid printing this page, you can carefully cut these with your rotary cutter and ruler.

