



HOME HARVEST QUILT

Lets get back to our grass roots and take a trip into the garden full of lush fruits and vegetables plump and ready for picking. This fresh modern quilt by Rossie Hutchinson gives us a bird's eye view of down on the farm life.



100% ORGANIC FABRIC MADE WITH LOVE, NOT PESTICIDES



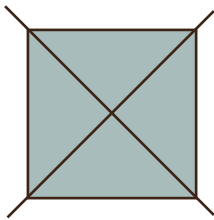
birch fabrics | www.birchfabrics.com | www.birchfabrics.blogspot.com | info@birchfabrics.com



CUTTING INSTRUCTIONS:

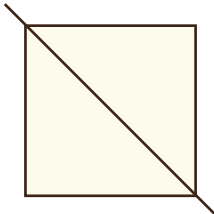
Please note: The prints in the Homestead line are one-way, directional prints. This means that if you look at the images in each print, you'll see that the image has a definite "top" and "bottom." I recommend that you pay attention to the direction of the fabric as you cut out the blocks, keeping people, animals, and plants right-side up.

Setting Triangles: From the yard of *Homestead Main* print, cut one 18-1/4" square. Cut the large square into four triangles by cutting along diagonals.



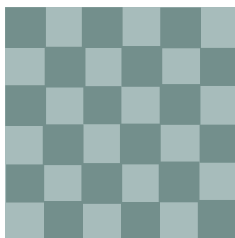
Cut two more left-side triangles & two more right-side triangles from the fabric using the triangles from the previous step as a template. Save all triangles for final assembly.

Corner Triangles & Plain Squares: Cut two 18" squares from the cream solid. Cut each into two triangles by cutting them in half diagonally.



From the remaining cream solid, cut fourteen 12-1/2" squares.

Block 1:



Cut eighteen 2-1/2" squares from *Clouds Mint*.
Cut eighteen 2-1/2" squares from *Solid Pool*.
Assemble as shown.

HOME HARVEST QUILT

SEAM ALLOWANCE: 1/4"

FABRIC REQUIREMENTS:

- For Quilt Top:
 - 1 fat quarter pack of Homestead:
 - Homestead Main
 - Oink!
 - Blackberries
 - Harvest
 - Daisybed Storm
 - Daisybed Sun
 - Cloud Mint
 - Clouds Shell
 - Roost
 - Little Lamb Fog
 - Little Lamb Mint
 - 1 yard of the following Homestead Main
 - Fat quarters of the following Birch Solids:
 - Tomato
 - Teal
 - Pool
 - 2 1/4 yards of Solid Cream
- To finish the quilt:
 - 1/2 yard for binding
 - 5 yards of 44" wide fabric for backing, or leftover scraps from the quilt top.
 - Batting



Block 2:

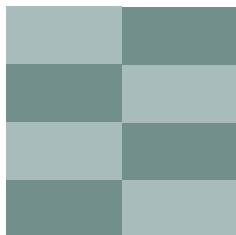


Cut two 3-1/2" x 12-1/2" rectangles from *Blackberries* print.
Cut two 3-1/2" x 12-1/2" rectangles from *Main Homestead* print.
Assemble as shown.





Block 3:



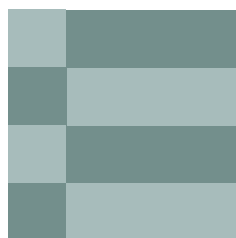
Cut four 3-1/2" x 6-1/2" rectangles from *Solid Tomato*.
Cut four 3-1/2" x 6-1/2" rectangles from *Oink* print.
Assemble as shown.

Block 4:



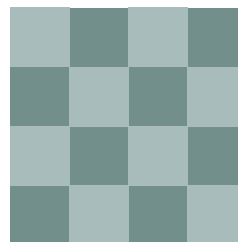
Cut three 2-1/2" x 12-1/2" rectangles from *Harvest* print.
Cut three 2-1/2" x 12-1/2" rectangles from *Roost* print.
Assemble as shown.

Block 5:



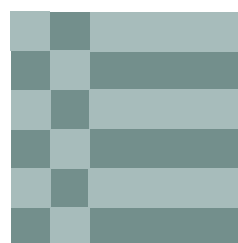
Cut two 3-1/2" x 9-1/2" rectangles from *Harvest* print.
Cut two 3-1/2" x 9-1/2" rectangles from *Daisy Bed Sun* print.
Cut two 3-1/2" squares from *Harvest* print.
Cut two 3-1/2" squares from *Daisy Bed Sun* print.
Assemble as shown.

Block 6:



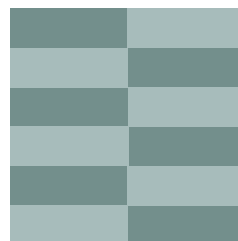
Cut eight 3-1/2" squares from *Clouds Shell* print.
Cut eight 3-1/2" squares from *Little Lamb Fog* print.
Assemble as shown.

Block 7:



Cut six 2-1/2" squares from *Blackberries* print.
Cut six 2-1/2" squares from *Daisy Bed Storm* print.
Cut three 2-1/2" x 8-1/2" rectangles from *Blackberries* print.
Cut three 2-1/2" x 8-1/2" rectangles from *Daisy Bed Storm* print.
Assemble as shown.

Block 8:



Cut six 2-1/2" x 6-1/2" rectangles from *Little Lamb Mint* print.
Cut six 2-1/2" x 6-1/2" rectangles from *Solid Teal*.
Assemble as shown.



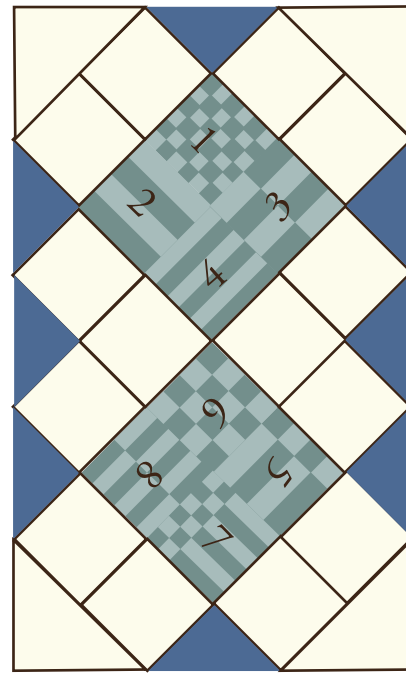
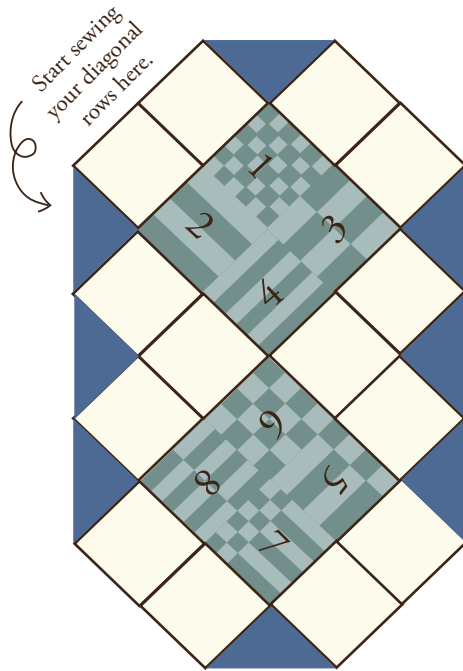


ASSEMBLE YOUR QUILT:

Use the following graphic to layout your quilt top.

Assemble your quilt top row by diagonal row. You will start with the top right row above blocks 1 and 2.

Finally, attach the large cream triangles to each corner. You may find it useful to fold each triangle in half and press a line into the center; after unfolding the corner triangle, the press mark gives you to line up with the square blocks at the corners.



VOILA!



FINISH YOUR QUILT:

Baste and quilt as desired. I asked my long-arm quilter to quilt fan shapes into the setting and corner triangles, then quilt three rows of cursive "f"s across each block, alternating the angle in a checkerboard from block to block.

Cut your binding in your preferred width, I used 2" strips.