

# Apple Basket 2.0

A FREE QUILT PATTERN!

*A quick sew perfect to show off your favorite prints! We've featured our newest linen yarn dyes and our new solid cream linen! Happy Quilting!*



 birchfabrics

100% ORGANIC FABRIC, MADE WITH *love*, NOT PESTICIDES.

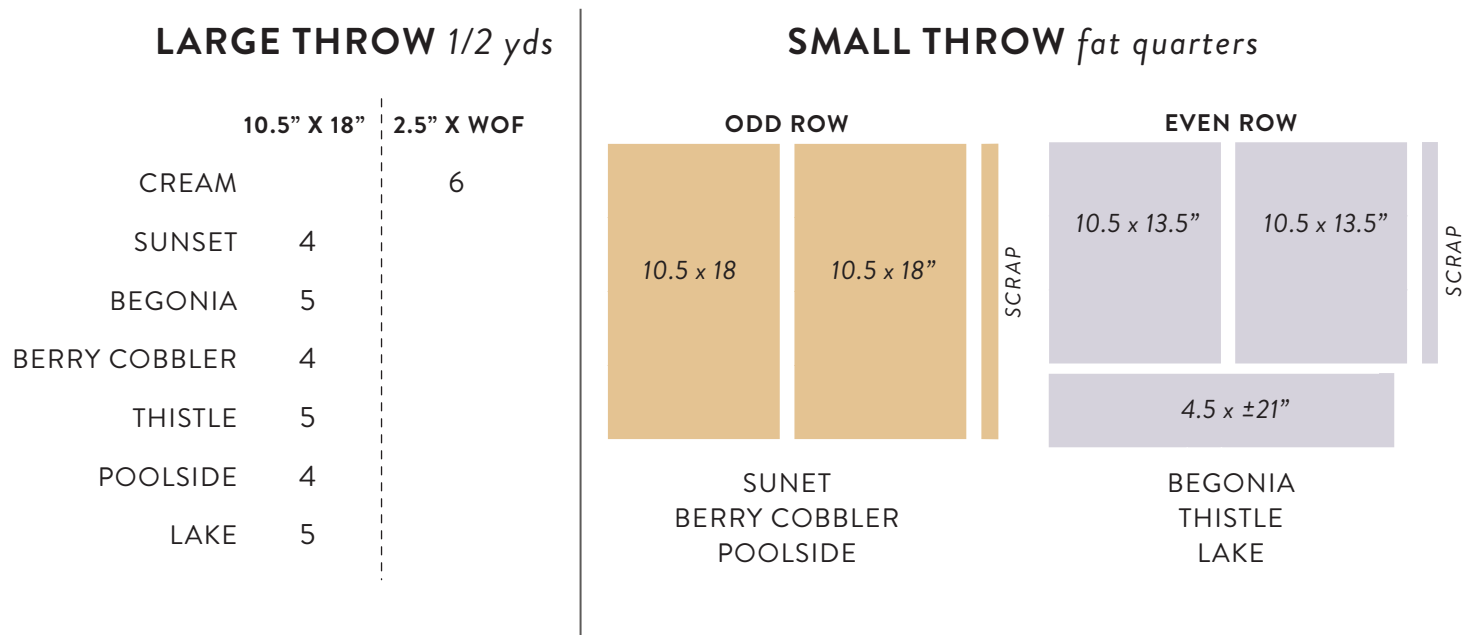
[www.birchfabrics.com](http://www.birchfabrics.com) | [info@birchfabrics.com](mailto:info@birchfabrics.com)

# FABRIC REQUIREMENTS



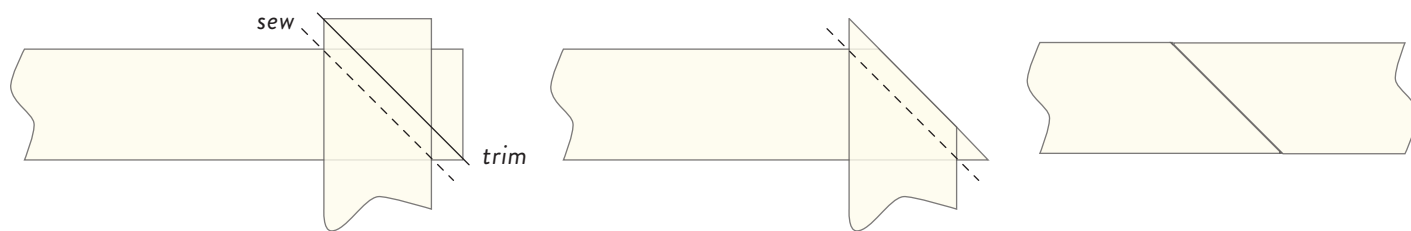
## CUTTING

*I like to keep this real simple: cut 10.5" strips from your half yard pr fat quarters running parallel to the selvedge, not trimming down to 18" until after we sew on the cream strips in the next step.*

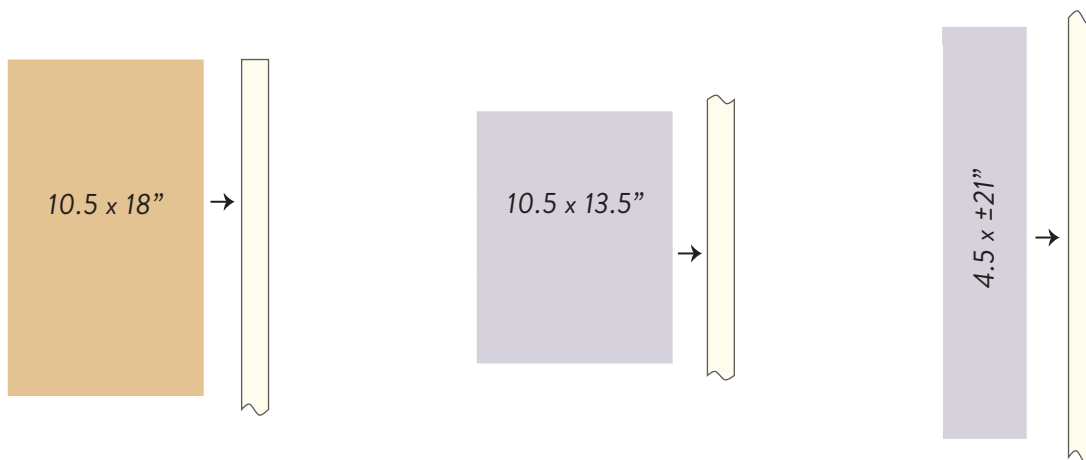


# ASSEMBLY

Sew Cream WOF strips together into one long strip. I like to sew my ends together as below:

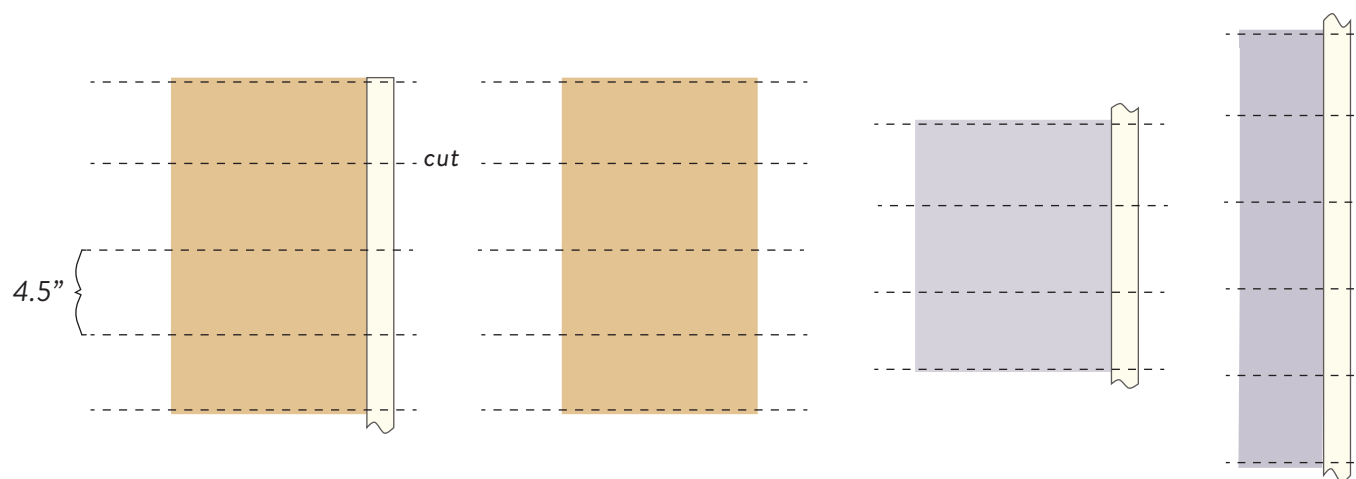


Sew all but one rectangle in each color to the Cream strip. I like to chain stitch this step, and not break thread until the end.



# TRIMMING

Here you can even everything out, and make your perfect 4.5 x 12.5" blocks. For the remaining 10.5 x 18" rectangles without the cream strip, cut down into 4.5" x 10.5" pieces and use to cap the ends. Cross cut your pieces into the following:

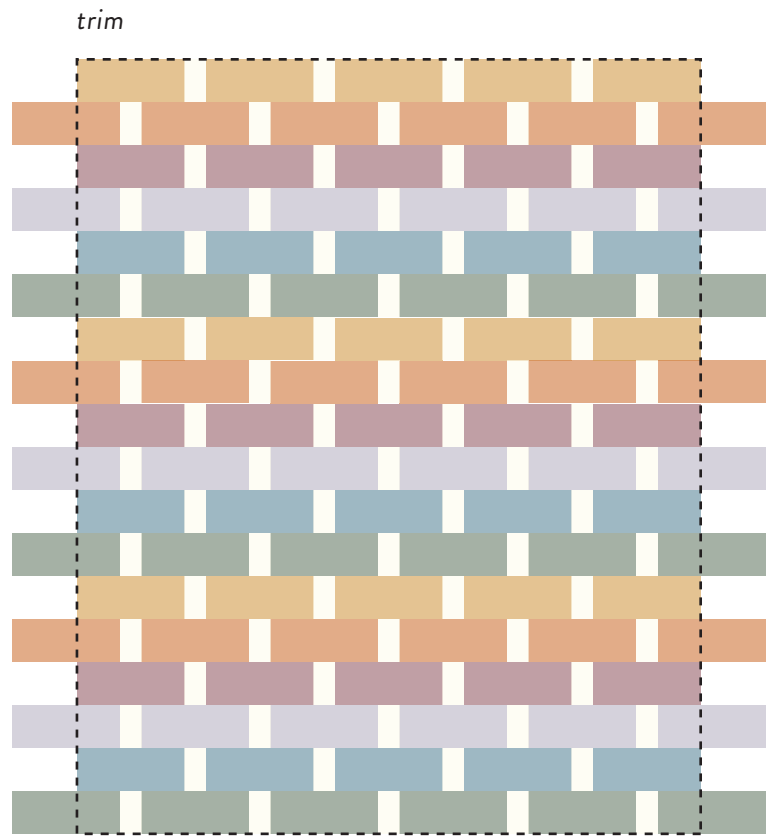
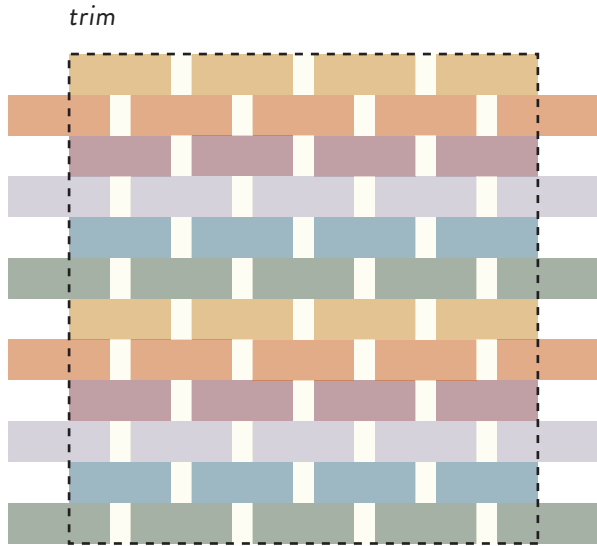


What are you sewing? We want to see! Tag #applebasketquilt  
Follow us on IG @birchfabrics for more inspiration!

# FINISHING

To complete your quilt top, arrange your rows by color, and sew together. Press all seams toward the darker fabric, or as desired. Sew each row together, press seams as desired.

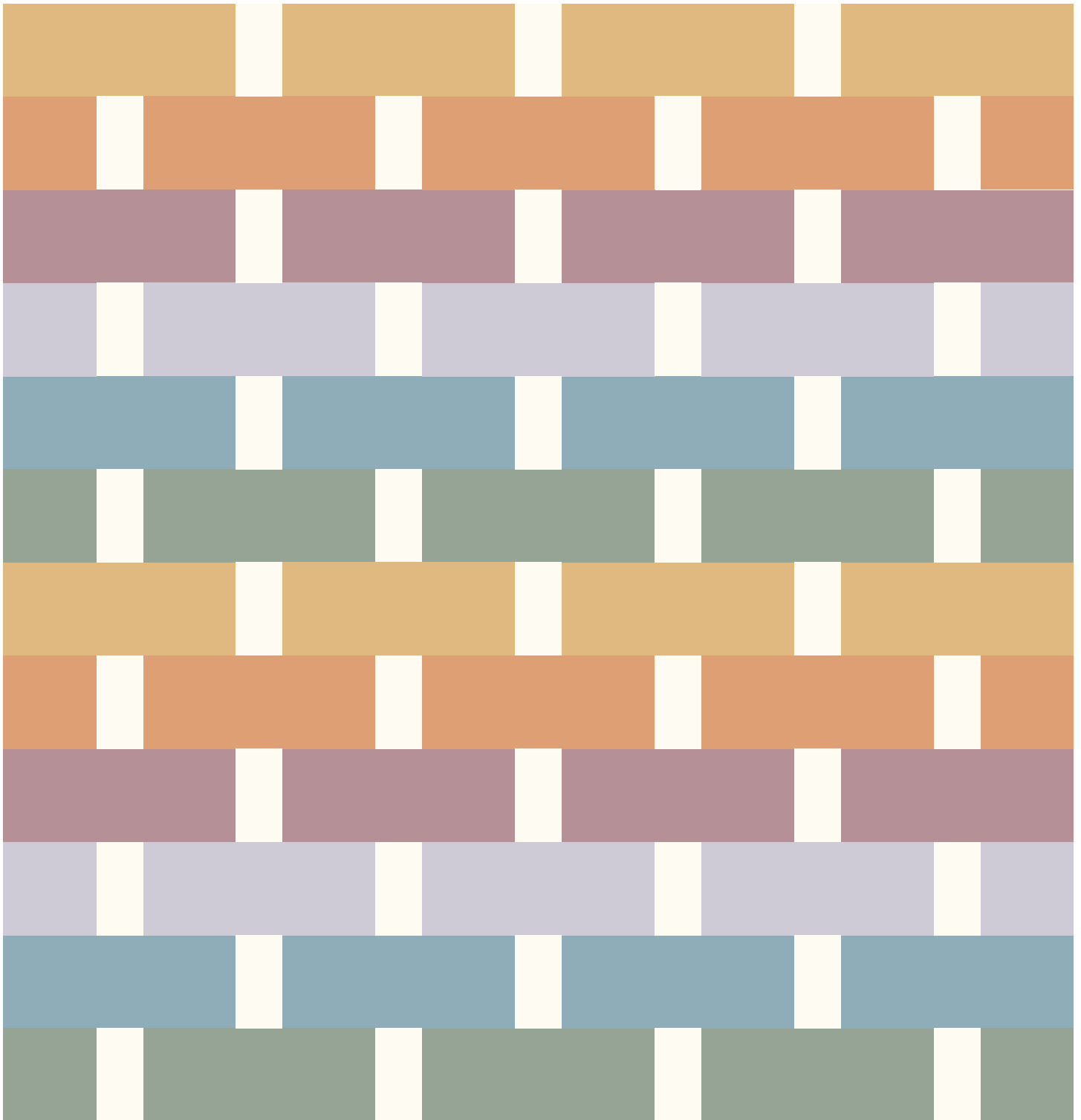
Try chain piecing your rows together by color to stay organized and speed up the process.



## SMALL THROW (46" x 48")

---

- 6 fat quarters, or a total of 1.5 yards vertical stripes
- 1.2 yards contrast



# LARGE THROW (72" x 58")

---

- 6 half yards, or a total of 1.5 yards vertical stripes
- 3/4 yards contrast

