

# USoft 8.0.2i

## Additional Notes

### June 2012

This document covers USoft 8. The purpose of this document is to provide you with information you should be aware of when installing or using this release. The information in this file supplements the USoft Online Help supplied with this version. This document also contains details of additional features, and known problems and restrictions, associated with this release.

This document contains four sections:

- **INTRODUCTION**, provides instructions for getting started with this release of the USoft Series, with references to related documentation where you will find more detailed explanations.
- **ENHANCEMENTS IN USoft 8: RELEASE NOTES**, provides you with the latest information on new features and enhancements in USoft 8. A list of miscellaneous notes and bug fixes is also included in this section.
- **KNOWN PROBLEMS, RESTRICTIONS, AND WORKAROUNDS**, lists problems and restrictions you should be aware of when using this release of the USoft Series. Where appropriate, workarounds are suggested.
- **THIRD PARTY LICENSE NOTICES**

## Introduction

### Online Help

Online help is available for all USoft products. There is also help available for setting up your system. You can access this help system from the application concerned, using the Help menu or the What's This? context-sensitive help, where available.

### PDF Documentation

A complete set of PDF documentation is included with this version. Note that these documents are not always up-to-date. For the latest information refer to this Additional Notes document and to the Help.

This online documentation is in Adobe Acrobat Portable Document (PDF) format. You will need to obtain an Acrobat Reader if you wish to view this documentation. Such a reader can be downloaded from [www.adobe.com](http://www.adobe.com). You can access the online documentation from the Help menu of the USoft products.

### USoft Support

For all communication related to this release, please use the following USoft e-mail address:

[support@usoft.com](mailto:support@usoft.com)

### Getting Started

This section provides an overview of the procedures you should follow to get started with the software, with pointers to other sections of this document and other documents where you can find more detailed information.

To get started with this version of the USoft Series:

1. Make sure that your system satisfies the system requirements specified in the "System Requirements" section.
2. Install the USoft Series software, using the instructions provided in the "Installation" section.
3. Set up a new project using USoft Binder. Instructions for using USoft Binder are provided in the USoft Binder help and the USoft Installation Guide.
4. Install a repository: follow the instructions in the "Initializing the Repository" section.
5. Start the USoft products from the work area of the USoft Binder, and familiarize yourself with the new features provided in this version of the USoft Development Series.

## System Requirements

System requirements that must be satisfied before you install the USoft Development Series are listed in the USoft Installation Guide and Setup help. This section lists additional requirements for this version of the USoft Development Series.

## Supported RDBMS versions

- Oracle versions 10 and 11 are currently supported by USoft Developer, in line with the policy that USoft should actively support the two most recent versions of Oracle. In principle, Oracle 9 is also supported by USoft Developer, but support is limited.
- Versions of Microsoft SQL Server up to and including SQL Server 2008.
- SOLID Server 3.5, and 4.5.

## CPU

For both the USoft production and development environment, a Pentium IV PC is the minimum required. For development work, a dual core machine is recommended.

## Memory

The memory requirement for the production environment on Windows XP or Windows 2003 Server depends upon the size of the USoft application and the number of other applications running on the machine, but a minimum of 512 Mb is recommended. For the development environment on Windows XP and Windows 2003, a minimum of 1 Gb is recommended.

For the production and development environments on Vista or Windows 2008, a minimum of 1 Gb of RAM is required, though 2 Gb is recommended for development work, especially if other applications are running on the system.

## Operating System

For a production and development environments, you need at least Windows XP or Windows 2003. Windows Vista and Windows 2008 are also supported.

## License

Before you can install or use USoft Developer Series products on your system, you must have a valid LICENSE.DAT file. During the setup procedure, you will be asked to provide the location of this LICENSE.DAT file.

## Installation

Installation procedures are described in the Setup help. This section lists a number of points that you should be aware of when you install this version.

To install USoft products on a PC:

1. Choose Run from the Start menu.
2. Insert the USoft Series CD-ROM in your CD drive, and wait for the Installation Wizard to initialize, and the welcome message to appear.

If you are installing from a source other than a CD, or if you have switched off autorun on your pc, navigate to the base folder of the installation package, and double-click the file named:

```
SetupUSoft<version>.exe
```

where <version> is the version number of this release of the USoft product set, for example: 8.0.1F. Wait for the Installation Wizard to initialize, and the welcome message to appear.

3. Click Continue. Follow the instructions displayed on your screen. You can find more information in your USoft Installation Guide.

## Post-Installation

Once you have completed the installation of the USoft Series, there are a number of post-installation tasks you must perform. These tasks are described in the USoft Definer and Setup help files.

## Initializing the Repository

Using the USoft Binder, you must create repository tables for a number of USoft Series products before you can use them. These products are:

- USoft Definer
- USoft Benchmark
- USoft Authorizer
- User Applications

See your USoft Setup Help and the USoft Binder help for more information about the USoft Binder, and your USoft Developer Help for more information on repository tables.

To create or initialize repository tables:

1. From the USoft Binder, open the project file containing the USoft products you have installed, or create a new one.
2. Click your right mouse button on the item for which the repository tables are to be created.
3. From the menu displayed, choose Create Tables.

The Create Tables dialog will be displayed. Click F1 for help with filling in the fields.

**Note:** If you choose to drop existing tables, any existing data will be lost. If you are creating a repository to replace an existing one, you must drop existing tables.

## Upgrading to USoft 8

To upgrade your repository tables from a previous USoft version to this release of USoft 8, an Upgrade option is provided in the USoft Binder. See the USoft Binder help and Upgrade help for more details.

## Enhancements in USoft 8: Release Notes

This section of the document provides you with an overview of the main enhancements in USoft 8. The focus of attention in this version has been on managability, scalability and openness, and the tool interface. Many of the enhancements included in USoft 8 are the result of customer requests and feedback. Improvements and new features in this version are outlined in this fact sheet. Note that some of these enhancements were introduced during ongoing development of version 7.

## Modular Development

If you have developed one large USoft application, you may incidentally run into problems with managing and delivering new projects. Because of the dependencies between projects, small projects may have to wait for larger projects. Therefore, new versions can only be released once or twice a year.

As a solution, you may serialize these projects and assign time frames, with the disadvantage that if one of the projects does not deliver in time, all following projects have to wait.

Splitting up your application into several modules which can be developed and maintained separately can make your development more flexible. It has many advantages:

- You can create independent releases for the modules.
- Faster delivery of smaller projects.
- New teams only need to build up knowledge of one (small) module.

This is exactly where modular development and internal interfaces come in. USoft applications can then be developed in separate modules and run as one application. It allows developing independent modules. The end user application allows for enterprise rules and an integrated GUI. Migrating to such an environment is regarded a smaller step and can probably be done more gradually.

Most of the time, modules will not be completely independent of each other. Some tables for example might be used by more than one module. To solve this problem, USoft Definer supports the use of Internal Interfaces on the following objects:

- Database Tables, Logical Views and Component Tables
- Domains
- Batch Jobs
- Decisions

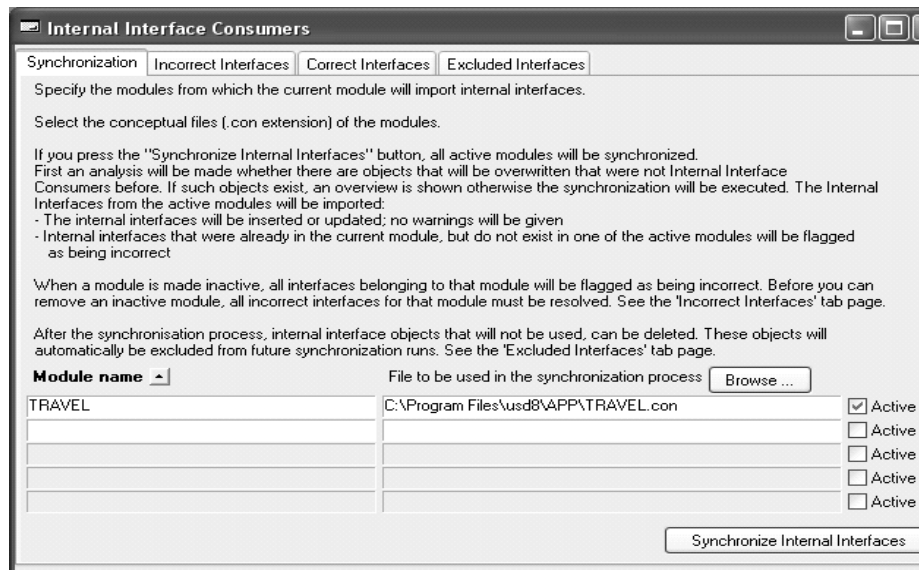
## Defining Interface Tables

In a Definer, you can define a table as being available for use by another module as an Interface Table, including one or more of its columns. Once flat files are created for this (provider) module, this table definition can then be used from another, consumer module.

This table definition can be seen as a shared table between modules. The table is owned by the provider and used by the consumer. The table should not be changed as there are other modules that use it and depend on it. If the table is changed, the other modules have to be changed and synchronized too. In the table, it is possible for each column to specify if it is part of the interface or not. Columns which are not part of the interface can be freely deleted or added to the table without effecting the interface. Other modules then will not have to be changed and synchronized.

When running the application, the definitions of all modules are read and merged into one application. Rules are also merged. So, all constraints will fire when necessary, no matter in which module they were defined.

In the Internal Interface Consumers window, you can specify modules and synchronize internal interfaces. After synchronising, you can view the correct, incorrect, and excluded interfaces on the appropriate tab pages. The help texts on the tab pages provide all information you need:



## Modules

A USoft application consists of one or more modules. They are developed in separate repositories. For each module, flat files have to be generated before the interfaces defined in it can be used from other modules. At runtime, the definitions of all modules are gathered into one application.

In all these situations, a module can act as PROVIDER module for another, CONSUMER module. IMPORTANT: These roles are only meaningful when related to each other: There is no such thing here as THE provider module or THE consumer application. For example: module A can be the provider of table AT1 and the consumer of table BT1. Module B can then be the consumer of table AT1 and the provider of table BT1. In that case modules A en B are both provider and consumer of each other.

One of the modules is the main module. This is the module which has the same name as the application. In the Definer of the main module it will be possible to define the composition of an application. The application consists of modules.

## Web Designer and AJAX Technology

USoft web applications use AJAX technology. In general, this results in a reduced network and server load since lots of data will be stored on the client. This results in a better performance compared with previous USoft versions.

AJAX (Asynchronous JavaScript and XML), is a group of interrelated web development techniques used to create interactive web applications. Using Ajax, USoft web applications retrieve data from the server asynchronously in the background, without the need to refresh a web page, and without interfering with the display and behavior of the existing web page.

All data in Web Designer pages is linked to data sources. The advantage is that each control that extracts its data from a data source automatically benefits from the AJAX technology.

All server actions except the executeSQLStatement action are executed asynchronously using AJAX technology - there is no need to refresh the web page. This results in an improved look and feel for your web application.

## Tree Control in Web Designer

A TreeControl object is now available for use in the Web Designer. This makes it

possible to include tree views in web applications.

## Log File Location

For security and convenience reasons all USoft log and temporary files are now stored in one central location, which you can specify during USoft setup. A central location makes it easier to find log files, and is useful for security, as it is important to know where USoft needs write permission, especially in a Web environment.

The folder that you specify during setup will have two subfolders: `usoft_logs` and `usoft_temp`. Within the `usoft_logs` folder are several subfolders, to contain logs from USoft Batch, the Create Tables utility, the Rules Service, and so on. All temporary files generated by USoft are placed in the `usoft_temp` folder.

## Debugging Web Service Components

For debugging purposes, you can make a BenchMark profile when calling a web service component. This profile then contains the soap messages that are sent to and received from a web service. The profiler is very useful when developing a web service component table. Using the Profiler, you can debug the input and output transformations.

For more information, please refer to Help topic: "Debugging Web Service Components".

When a web service provider is created, four files are generated: two `.asp`, one `.inc` and one `.xml` file. The `.inc` file contains a `DEBUG` parameter. The default value of this parameter is `No`. You can use the `DEBUG` parameter to suppress or display messages regarding the setup of the web service provider (e.g. the rules service is not started or is using a different port number, the user/password are not valid, the rules service is not started on a specific application, the MSXML component is not installed,...).

## Web Service Error Handling

You can improve the default error message behavior by using customized XML error messages or USoft XML error messages (or a combination). Both types of XML error messages apply an XSL transformation to the default error message.

Customized XML error messages are defined per web service provider method, and generate a `wsdl:fault` element in the WSDL schema. This makes the structure of the error message available to the web service client.

For more information, please refer to Help topic: "Web Service Error Handling", and subtopics.

Cross-Referencing

## Integration of Batch Definer and Definer

All USoft Batch Definer functionality has been integrated into the USoft Definer. The repositories for both applications have also been merged. All references to USoft Batch as a separate application have been removed from the toolset. A new "Batch" tab page has been added to the Definer catalog for easy access to the USoft Batch related features within the integrated Definer. Other changes you will notice in the Definer due to this integration include:

- You can now create Batch (`.job`) files from the Create Flat Files dialog.
- Menus have been adapted to include Batch features
- Batch jobs are included in the list of business objects under the Teamwork tab of the catalog.

## Call Batch Jobs From Constraints

It is now possible to call batch jobs from a constraint. The following restrictions apply:

- The job (or sub-jobs of the job) cannot have action tasks.
- The job cannot be an interface job.
- Currently, the job can only be used in an 'invocative' constraint, that is: only as the TOPMOST component in an invoke, for example:

**invoke batchrunner.mybatch with select col1, col2 from t1 where pk=73**

- The job can only be called using the method call syntax, NOT using the StartJob / RunJob methods.
- Any (pre)commit fired from the job will NOT be executed.. This is also the case for record-level commits for import/SQL tasks.

## Batch Cross-Referencing

USoft 8 introduces cross-referencing for batch jobs. Cross-reference on batch job items is now available for SQL statements defined in the following locations::

- External sets
- SQL Statements within a SQL Task
- Import SQL Statements within an Import Task
- Decisions

These categories of SQL statements now have associated 'Correct' flags. There are now also constraints that flag a SQL statements as being incorrect when a table- or column name changes, or when an external set (element) name is modified.

## Off the Shelf Components

Off the Shelf Components have been made more accessible. You can now open the Off the Shelf Component from the catalog on the right mouse menu of the J2EE Components tree node.

The 'Select for import' checkbox in the Off the Shelf Components window has been replaced by an Import button. This button imports the Off the shelf component.

## Flat Files

The number of flat files has been reduced by transferring all information that was stored in the .EXT files to the .ESI files. Flat files are now:

<application>.JOB containing batch job definitions  
<application>.CON containing conceptual definitions  
<application>.ESI containing external/design definitions

.JOB and .CON files are generated from within the Definer. .ESI files are generated from the Windows Designer. The size of the generated .CON and .ESI files has been considerable reduced (by a factor of between 4 and 10), and the time taked to generate a .CON file has improved dramatically (10 times faster).

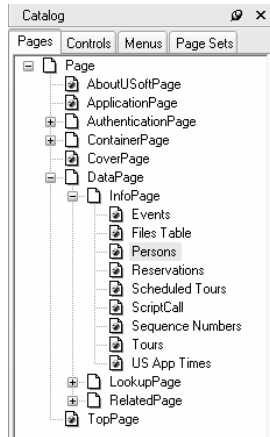
In addition, there are two message files that can be generated from the Definer for translated messages

<application>.SMG for system messages  
<application>.UMG for application strings

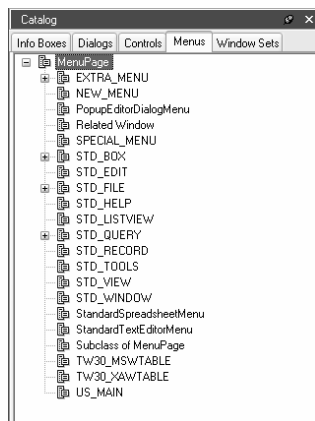
## New Catalogs

Catalogs for the Definer, Windows Designer and Web Designer have been adapted to take account of changes in the applications:

- Web Designer:**  
 A Menu tab page has been added to the catalog, to reflect the move of the menu definition functionality from the Definer.

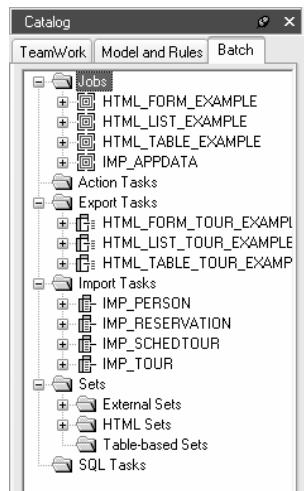


- Windows Designer:**  
 A Menu tab page has been added to the catalog, to reflect the move of the menu definition functionality from the Definer.  
 A Window Sets tab page has also been added. This equivalent to the Page Sets tab page in the Web Designer.



- Definer:**  
 A Batch Tab has been added due to the integration of the USoft Batch Definer and the USoft Definer.





## Menu Definition in Windows/Web Designer

All menu definition tasks have been moved from the Definer to the Windows Designer and Web Designer. All menu definitions are now stored in the .esi flat file. This move simplifies the workflow required when defining menus, and it is now possible to make subclasses of defined menus.

The Windows Designer and Web Designer now have a "Menus" tab page in their catalogs. This provides easy access to defined menus and the functions for defining menus.

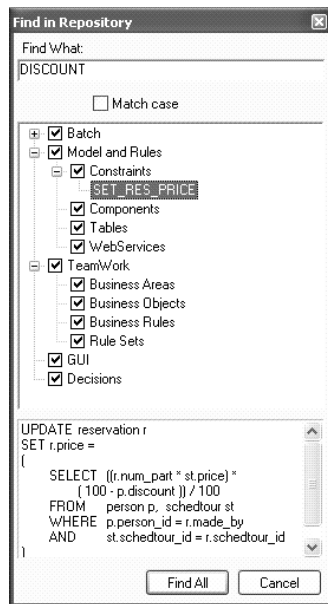
For more information refer to the menus sections of the online help for the Windows Designer and Web Designer.

## New Search/Find Option in Tree Views

A new feature has been added to search/find items in tree views. Both Windows Designer and Web Designer are now using this feature which is accessible from the right-mouse menu in the catalog trees. This makes it possible to search through all classes listed in the catalog. The feature is generic \*and can also be used in client applications by using the "Search" action under the Tree View.

## Find in Repository Dialog

The Find in Repository dialog, accessible from the Definer's Edit menu, allows you to search for an occurrence of a string in several areas of the repository.



The Find in Repository dialog contains:

- An area where you can type the string that is to be searched for.
- A tree view that allows you to restrict the search areas, and also shows the results of the search.
- A text area that shows the text in the selected item in the tree view containing the searched string.

If you double-click an item in the tree view, the definition window for that item will be displayed. In the example illustrated above, double-clicking on SET\_RES\_PRICE opens the constraint definition window for the SET\_RES\_PRICE constraint.

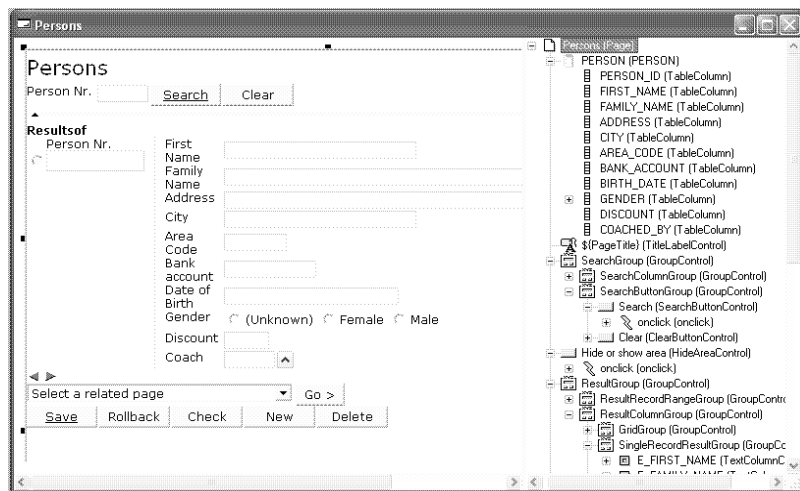
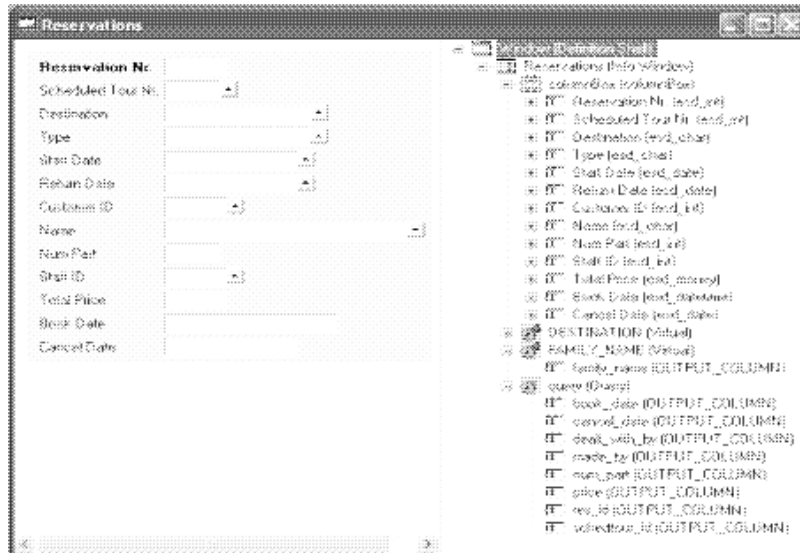
You can restrict the search area by clearing checkboxes in the tree view before pressing the Find All button. Only those areas for which the checkbox is checked will be searched. You can toggle the setting of the checkboxes using the mouse, or the keyboard space bar.

## Context Sensitive Editor

An improved popup text editor is now available. This new editor includes a keyword highlighting feature, for SQL, for example, search/replace options and a customizable font.

## Design Views and Object Trees

The new Windows Designer and Web Designer Design Views are the primary development environment for your end user GUI interface. They are a close approximation of what the end user will see and use. The left pane of the design window shows a view of the class that is being worked on, and the right pane contains the Object tree. The Object tree enables you to quickly navigate to parent or child objects of the currently selected object. It provides access to visible objects such as controls, and to non-visible objects such as queries.



In a design view, you can for example:

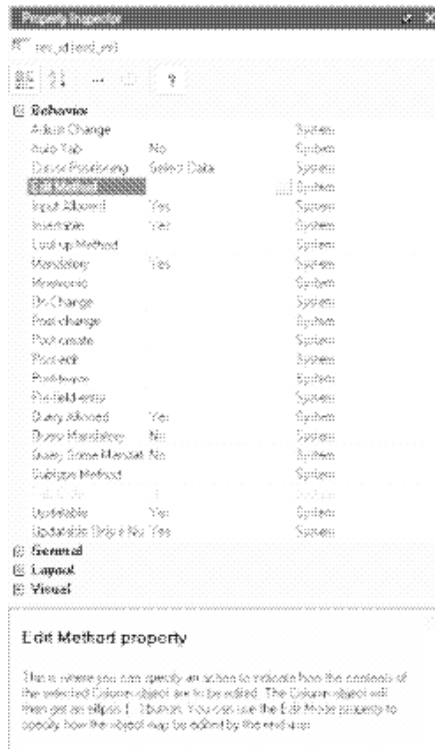
Select any visible control contained in the window simply by pointing at it.

Navigate to parent controls by clicking whilst holding the ALT key down, or by using the Object tree.

- Switch the Selection Filter to Off to select low-level child controls.
- Open the Property Inspector for a selected object, and set or change object properties.
- Add or remove classes in the window.
- Use options from the menus.

## Property Inspector

The Property Inspectors in the Windows Designer and Web Designer have been redesigned to simplify access to properties and their associated values.



Refer to the online help for the Windows Designer and Web Designer for more information.

## Docking Windows

Several windows within the Windows Designer and Web Designer are dockable. This includes the Catalog and Property Inspector, for example. Dockable windows can be:

Docked to the sides of the main Windows or Web Designer window.  
 Floated above your application in separate windows.

- You can also drag the window outside the perimeter of the main window, where it can be positioned on the Desktop, for example.
- Hidden, or collapsed in the left margin of the main window, only appearing when the user moves their cursor over the windows's caption in the left margin.
- Docked to other Docked Windows.

## Repository Manager

The new USoft Repository Manager provides an XML-oriented approach to USoft Version Management that enables you to:  
 Export a USoft Definer, Authorizer, or BenchMark repository, or parts of it, in XML format.

Compare two XML repositories.

- Analyze this comparison and the differences between two repositories.
- Use this comparison to synchronize two repositories with each other by “importing” differences partially or completely.
- Define releases and patches.
- Export and compare parts of an application.
- Define task sets that let you perform these tasks outside USoft Repository Manager, on an ad-hoc or scheduled (daily) basis using external scheduler software.

## dotNet (.NET) Components

With the popular dotNet(.NET) common language runtime (CLR), a vast amount of functionality has become available in the form of components in standard libraries and code stub on the internet in an easy to use form. This functionality is available in USoft using the RDMI interface for Microsoft's .NET, and the C Sharp programming language.

## Miscellaneous Notes and Bug Fixes for USoft 8 Beta 1

Most of the remaining notes include an identification number. These numbers are Prorep IDs. Prorep is the information system that USoft uses internally. If you use these numbers in your communications with USoft, our staff will know exactly what you are referring to.

### 104317 BATCH

In batch jobs, using disable rules on a statement that contained logical views would still result in the triggering of rule validation . This type of statement will no longer trigger rule validation.

### 104616 BATCH

When using Batch import tasks, by default the successfully imported records were written to a <import file>.suc file and any messages to a <import file>.mes file. As this behavior affects performance it is now turned off by default, when desired it can be turned on using the existing parameters create\_suc=true and create\_mes=true. The file open mode has changed from append to overwrite, in effect this means that the status file only holds information about the last run of the job

### 103909 BATCH

The batch functionality of constraint deactivation has been expanded and improved. The new list of actions is as follows:

ActivateConstraint(name), DeactivateConstraint(name) or  
ActivateAllConstraintsDeactivatedByName()  
DeactivateRestrictiveConstraintChecks + ActivateRestrictiveConstraintChecks  
DeactivateTransitionalConstraintChecks + ActivateTransitionalConstraintChecks  
DeactivateCorrectiveConstraintChecks + ActivateCorrectiveConstraintChecks  
DeactivateDomainConstraintChecks + ActivateDomainConstraintChecks  
DeactivateAllConstraintChecks + ActivateAllConstraintChecks //does all of the above

NOTE: ActivateAllConstraints is still supported for backwards compatibility, the new name is ActivateAllConstraintsDeactivatedByName

When upgrading, existing batches which are using ActivateAllConstraints in combination with relational or restrictive checks are only affected in the exceptional case that after the calling ActivateAllConstraints relational or restrictive checks should remain disabled.

### 104909 BATCH FILE LOCATIONS

Batch behavior regarding file locations is now harmonized. data\_directory now takes precedence over hard paths or %% variables in import/export files. This does not change existing behavior, previously defining both data\_directory and a path resulted in concatenation of both resulting in errors. Partial paths (subfolder/filename) are still concatenated with data\_directory.

File location is now determined as follows:

data\_directory (+partial path)

- hard path with system variables substituted
- no path: current directory

The path is now always displayed in error messages.

### 104460 BENCHMARK

The profiler contained some inconsistencies which made it difficult to export and import a profile using XML.import and export. This has been fixed.

### 105411 DEFINER

It is now possible to (temporarily) switch a component table into a database table and vice versa from the right mouse button menu in the Definer catalog. Switching a component table into a database table and visa versa can be useful for testing purposes, for example.

#### **104068 DEFINER**

Off the Shelf Components have been made more accessible. You can now open the Off the Shelf Component from the catalog on the right mouse menu of the J2EE Components tree node.

The 'Select for import' checkbox in the Off the Shelf Components window has been replaced by an Import button. This button imports the Off the shelf component.

#### **105563 DEFINER**

The Physical Tables/Drop Undefined option has been removed from the Tools menu.

#### **102055 DEPLOYMENT CONFIGURATION**

The following resources have been moved to the deployment configuration.

- wait for lock
- lock foreign keys
- auto-commit
- lock parent on sequence
- max constraint depth
- update supertype on insert
- show component errors
- show database errors

Setting these resources in usdi/usdiw resource file will no longer work. Also corresponding properties in the Windows Designer are no longer available. Deployment configuration is now the only location where these properties can be set.

#### **69716 LIST VIEWS**

List views did not offer a way to use a multiple selection. Now, pressing the Return key on a list view will execute the double-click action for every selected row in the list view. List view hostvars for the respective rows are transferred. For example:

```
myListView.ActionDecision(MyDecision, :myListViewColumn)
or
MyComponent.DoSomething(:customerListName, :customerListAddress)
```

The same behavior will result from calling the list view's Accept method.

NOTE : If you address list view hostvars directly, for example, from a dialogOK action, it will only operate on the current item, the last one you selected. Also, if you double-click, you lose the multiple selection. Multiple selections are made in the usual way, using Shift and Ctrl keys with a mouse click/arrow key.

#### **104701 LOG FILES**

Client information (user-name and ip-address) is now visible in the Rules Service log file at any error level.

#### **104028 LOG FILES**

If the Rules Service log level is set to the minimum level (Error), all error messages in the Rules Service log file are now preceded by the user name and ip address of the client that caused the error.

#### **104185 LOG FILES**

Functionality regarding the batch log file has changed slightly. Previously it was possible to specify a folder from the command line by specify -logfile <path-ending-with-slash>. This now results in an error message. The log path must be set in the registry or environment (\$USOFT\_LOGPATH).

#### 102952 RULES ENGINE

The expanding of '\*' in a statement like 'select \* from <table>' was not uniquely defined. The order of the column was:

- by position
- by key order
- by mandatory descending

To make it unique, 'column\_name' has been added to this list.

#### NOTE:

When, for example, a logical view or job-external-set is using such a 'select \*' and the table did not already have a unique position-key order-mandatory combination, the order in which the \* is expanded might now be changed.

#### 103223 RULES ENGINE

Using \$\$USER\$\$ as default value would result in a double username when create-tables updated existing records. This has been fixed.

#### 104463 RULES ENGINE

When the additional parameter 'Rdbms\_Connect' of the Deployment Configuration was set to 'No reconnect', it was not possible to switch to a different user using ApplicationLogin() or Rulesengine.SetUser(). This has been fixed.

#### 106025 RULES SERVICE

In USoft 7, a HTTP URL request to the Rules Service that specified xml-SOAP as return mime type would return a SOAP 1.2 response instead of SOAP1.1. In USoft 8 this has been corrected.

A call via a URL specifying xml-SOAP now responds with the correct SOAP 1.1 namespace: "http://schemas.xmlsoap.org/soap/envelope/"

A request example:

```
http://localhost:ypurportnumber/yourapplicationname/yourusername/xml-SOAP/SqlScript?$Password=yourpassword&$$SQL=select%20user
```

#### 106116 SEND-MAIL()

The send-mail() action is no longer available.

#### 105485 SQL COMMAND

SQL Command has a new configuration property:

```
set modulename <modulename>
```

When this property is set the module context switches to the specified module.

#### 104271 SQL COMMAND

The action 'create-shell' has been removed. This action was used to open SQL Command. The new way to open SQL Command is:

```
WindowCreate('SqlCommand Dialog')  
or  
SqlCommand_Dialog.Window.Create()
```

#### 102399 SQL2XML AND XML2SQL

In the transformation of SQL to XML and back to SQL there were some errors:

```
SELECT T1.* FROM T1, T2
```

would be transformed to

```
SELECT * FROM T1, T2
```

This has been fixed.

In the transformation to XML \* would always be bound to a table:

```
<Column name="*" table_name="SQL2XML" table_info_window_name="SQLs  
to XML" position="1">
```

Now this is only the case when SQL2XML.\* is used. In the case of SELECT \* this will result in:

```
<Column name="*" position="1">
```

#### **103608 TREE VIEWS**

A new feature has been added to search/find items in tree views. Both Windows Designer and Web Designer are already using this feature which is accessible from the right-mouse menu in the catalog trees. The feature is generic can also be used in client applications by using the "Search" action under the Tree View.

#### **104912 WINDOWS BUTTONS**

It is not possible to set other text colors and background colors on a (Windows "standard") button. Windows prohibits this.

#### **105213 WINDOWS DESIGNER**

In a menu class a menu line based on 'MenuPage' class also has a 'Mnemonic' property.

A menu line now has a 'Condition' property. This property can contain a SQL-statement. If the SQL statement used as a condition returns a record, the menu page is sensitive. If the condition does not return a record, the menu page is insensitive. The sensitivity can still be set by the sensitivity properties.

#### **102945 XML.SQLEXPORT**

The meta data of columns of the XML.SQLExpert method has been extended with the prompt of the column.

## **Miscellaneous Notes and Bug Fixes for USoft 8 Beta 2**

Most of the remaining notes include an identification number. These numbers are Prorep IDs. Prorep is the information system that USoft uses internally. If you use these numbers in your communications with USoft, our staff will know exactly what you are referring to.

#### **106495 BATCH**

When in a job a constraint is specifically deactivated, it is now automatically activated again after the job has run.

#### **106582 BATCH**

It is now possible to call batch jobs from a constraint. The following restrictions apply:

- The job (or sub-jobs of the job) cannot have action tasks.
- The job cannot be an interface job.
- Currently, the job can only be used in an 'invocative' constraint, that is: only as the TOPMOST component in an invoke, for example:



### **invoke batchrunner.mybatch with select col1, col2 from t1 where pk=73**

- The job can only be called using the method call syntax, NOT using the StartJob / RunJob methods.

- Any (pre)commit fired from the job will NOT be executed.. This is also the case for record-level commits for import/SQL tasks.

### **87783 DEFINER 18505**

The 'Create New or Updated Tables' feature did not take added or changed additional indexes into account. This has been rectified.

### **106570 IO FORMATS 36223**

The error message regarding incorrect IO formats has been improved: it now includes information about the type of conversion that was attempted.

### **104047 LOGIN**

Separate (multiple) logins now work correctly.

### **106956 MESSAGE FILES**

.smg message files have a new format. .smg files from previous versions are not compatible with the current version. All .smg files must be regenerated.

### **106463 MODULES**

Opening dialogs from other modules using SQL Command now results in a display that contains all the design elements in the original dialog.

### **107177 MODULES**

Updating a module name at the consumer side would lead to violations. This has been fixed. It is now possible to rename the module at the consumer side in the Application Modules window.

### **103861 RULES ENGINE**

The RefreshConstraints() action now also works when running from flat file. The .CON file can be replaced while running the application. Executing this action will then re-read the constraints from the new flat file.

### **103635 RULES ENGINE**

Setting autocommit in the deployment configuration no longer results in double inserts when using the Client Server interface.

### **105977 RULES ENGINE**

When working with multiple modules, translations of application strings can now be made for all modules.

### **107082 RULES ENGINE**

The GetProperty method of the internal Rules Engine component has been extended with the property 'DEFAULT\_DATE\_FORMAT' which returns the default date format as specified in the Rules Engine parameters table in the Definer.

### **105662 SOLID**

Use of UNION in a SELECT statement now works correctly, and returns complete records.

### **106960 SQLSCRIPT**

SqlScript now has a new SET option to configure the output of a script.

### **SET outputEncoding ANSI | UTF8**

If the output goes to a file this option specifies the encoding of the output file. Possible values are ANSI and UTF8. Use "SET outputEncoding" before "SET

reportFile" in a script.

#### **TEAMWORK**

TeamWork functionality has been removed from the Windows Designer. The functionality has been taken over by the Window Sets feature.

#### **106214 WEB DESIGNER**

The Run option in the Web Designer now works correctly.

#### **106715 WEB SERVICES 34460**

If the services definition is missing from the WSDL you will now receive an error message.

## **Miscellaneous Notes and Bug Fixes for USoft 8.0.1**

Most of the remaining notes include an identification number. These numbers are Prorrep IDs. Prorrep is the information system that USoft uses internally. If you use these numbers in your communications with USoft, our staff will know exactly what you are referring to.

#### **108058 BATCH 37839**

The message "It is not allowed to use the same alias twice" has been replaced by a new message that also identifies the alias in question.

#### **101330 107074 BATCH 33299 34194**

USoft used a sequence number for the creation of a unique name for a temporary database table. At startup, the sequence was created (if it did not yet exist) and the next sequence value was retrieved. This has been changed. USoft now uses a combination of the process-id, and the operating system up-time in seconds and milliseconds to generate a unique name. In this way, the sequence is no longer required.

#### **107297 BENCHMARK**

Opening both the Tracer and the Profiler left the application in a non-responsive state. This has been fixed.

#### **100722 BENCHMARK 34059**

Violation reports would check and report errors on component tables. This has been fixed. Component tables are now skipped.

#### **107278 BINDER**

The Web Designer item is now disabled in the USoft Binder when the project type is 'Production'.

#### **54145 DEFINER 23107**

The 'Create New or Updated Tables' feature did not take added or changed additional indexes into account. This has been rectified.

#### **107311 ORACLE FUNCTION SUPPORT**

Support for Oracle functions regexp\_insert, regexp\_replace and regexp\_substr has been added.

#### **105866 RULES ENGINE**

The setproperty method of the Internal Rules Engine component has a new property:

name = ENDUSERMSG

possible values:

YES:                   The message system will switch to showing end user messages

NO: The message system will switch to showing developer messages  
RESET: The message system will switch the messages as specified at  
startup

#### **102339 RULES ENGINE**

Setting the maximum number of rules engines to a low value (for example, 3) could have caused rules service failures. This could have resulted in a 'Failed to start engine' error message. This problem has now been fixed.

#### **108106 SQL SERVER**

On SQL Server 2008 avoid using the collation: Latin1\_General\_100\_CS\_AI\_WS. This collation can lead to unexpected errors during the creation of database tables, for example when creating Definer application tables. Use the collation: Latin1\_General\_CS\_AI\_WS instead.

#### **107265 TABLE() ACTION**

In previous versions the table(<table>) action would open the default info window of the table. In the new situation the action opens the default info window but uses the SQL statement:

```
SELECT * FROM <table>
```

#### **102683 UPGRADE**

The Upgrade process from 7.0 to 8.0 removes the USBATCH Application and table rights. Authorization on Batch tables must be reapplied manually.

#### **107348 UPGRADE 35126**

The upgrade process to USoft 8 upgrades the system messages: new messages are added, old unused messages are deleted and changed messages are updated.

#### **108109 USXML/USXSL**

UsXsl.SetXml method returns now the alias of the XML document.  
UsXsl.SetXsl method returns now the alias of the XSL document.

#### **108075 WEB DESIGNER**

A new button has been added to the design window to publish the design class.  
A tab control has been added to the design window that shows the preview on one tab page and the HTML on the other tab page.

#### **108304 WINDOWS DESIGNER 37936**

The multi-line Editor in Property Inspector now displays Unicode characters correctly.

#### **107318 WINDOWS DESIGNER**

The menu now allows the following accelerator syntax:

```
(Ctrl\+)?(Shift\+)?(Alt\+)?  
(INS|DEL|TAB|HOME|END|ESC|ENTER|PAGE|DOWN|PAGE|UP|DOWN|UI|LEFT  
|RIGHT|[0-9a-zA-Z])(F([1-9])|([0-2]))
```

This means that for instance the 'Save All' option in the Designer can be activated by the Ctrl+Shift+S accelerator. A Ctrl+Shift+Alt combination is not supported.

#### **107717 XML REPORTS**

A new method has been developed that generates a report of a window. This report contains information like:

- the SQL being used (main query and extra queries)
- query conditions of columns
- whether columns are displayed or not

- queried data

The report can be generated by calling the following method on a window:

```
DataReport(<filename>[, UseIOFormat])
```

The first parameter specifies the filename to write the report to. The second optional parameter specifies whether the data is to be represented in the format as stored in the database or as displayed in the window.

## Miscellaneous Notes and Bug Fixes for USoft 8.0.1A/B

Most of the remaining notes include an identification number. These numbers are Prorrep IDs. Prorrep is the information system that USoft uses internally. If you use these numbers in your communications with USoft, our staff will know exactly what you are referring to.

### 108653 CONSTRAINT MESSAGES 36938

By default, all primary key field prompts and values are displayed together with a constraint message. If the position order of fields was changed in the Definer, incorrect prompts would be associated with correct values. This problem has now been fixed.

### 108610 DEFINER 36393

When creating a table or creating a create-table script, the Changed By and Changed On fields were updated. This has been fixed.

### 108354 FONTS

There were problems with the display of fonts in the text editor. This has now been fixed.

### 108401 INDEXES 37828

When running Create Tables on the Definer a new index is now added for the T\_INDEXES table on the table\_name column.

### 108643 IO FORMAT 37097

The compact numeric IO format - 9(n) - was not working correctly in UsFormat.DoubleToChar. This problem has been solved

### 108636 QUERYEXECUTE() METHOD 36351

The QueryExecute() method has been extended with an optional parameter: [<mode>]. If this parameter is set to QUIET no message is displayed if the query does not return a record.

### 108341 RULES ENGINE

XML.QUERY would occasionally return double attributes with the same name when the query was performed on a subtype/supertype table. This problem has been fixed.

### 108337 RULES ENGINE

When checking a dotNet component, this did not correctly generate the methods when the component contained a query protocol. This has been solved.

### 108606 RULES SERVICE 36118

When a SQL script was called, either directly by using a HTTP call or, for example, when called from a decision, an error message would be displayed when quitZeroRows was set to True and a statement in the script retrieved no records. This has been fixed: the error message is no longer displayed.

Also, when set showErrorMessages was set to False in a script, error messages would still be returned. This has also been fixed.

#### **108435 WEB DESIGNER**

The effect of changing the 'position' property was not immediately visible in the design tree. This has now been fixed.

#### **108323 WEB DESIGNER**

If you used Drag & drop to copy or move events from one design view to another, the actions were lost. This has been fixed.

#### **108723 WEB DESIGNER**

Changed templates and variables:

CustApplet.xml:

```
<xsl:variable name="CustAppletVersion">
```

USApplet.xml:

```
<xsl:variable name="USAppletVersion">  
<xsl:template match="/Combined/Page">  
<xsl:template match="LabelControl">  
<xsl:template name="TextControl">  
<xsl:template match="InputControl[@type='textarea']">  
<xsl:template name="InputControlSelect">
```

CreateJavaScript.xml:

```
<xsl:template name="InsertEventHandlers">
```

Grids.xml:

```
<xsl:template name="GridCellControlRow">
```

If you have overwritten one or more of these templates in an alternative directory in CustApplet.xml you should adapt these templates in the CustApplet.xml file(s).

## **Miscellaneous Notes and Bug Fixes for USoft 8.0.1C**

Most of the remaining notes include an identification number. These numbers are Prorep IDs. Prorep is the information system that USoft uses internally. If you use these numbers in your communications with USoft, our staff will know exactly what you are referring to.

#### **106690 SOLID**

Opening the 'Page Sets' tab in the Web Designer catalog or the 'Window Sets' in the Window Designer could have taken a lot of time when working from a Solid database. This problem has been fixed.

#### **108509 WEB DESIGNER**

Columns in a GridColumn were also centered when the horizontal alignment of the containing group was centered. This problem has now been solved.

#### **108509 WEB DESIGNER**

Changed templates and variables:

CustApplet.xml:

```
<xsl:variable name="CustAppletVersion">
```

USApplet.xml:

```
<xsl:variable name="USAppletVersion">
```

If you have overwritten one or more of these templates in an alternative directory in CustApplet.xml you should adapt these templates in the CustApplet.xml file(s).

## Miscellaneous Notes and Bug Fixes for USoft 8.0.1D

Most of the remaining notes include an identification number. These numbers are Prorep IDs. Prorep is the information system that USoft uses internally. If you use these numbers in your communications with USoft, our staff will know exactly what you are referring to.

### 108858 DEFINER 38112

The containment tree in XS Type Occurrences was slow and very memory-intensive. This could have caused a crash on larger repositories due to memory depletion. This has been fixed.

### 108933 DEPLOYMENT CONFIGURATIONS 38113

The following GUI application properties were moved to the Authorizer's Deployment Configuration in USoft 8:

- Update Supertype On Ins
- Number Of Update Columns
- Lock Parent On Seqno
- Max Constraint Depth
- Lock Foreign Keys
- Wait For Lock
- Show Component Errors
- Show Rdbms Errors

As a result, an attempt to set these resources in the usdi/usdiw resource files no longer works. This implies that setting application properties using a method such `Application.showRdbmsErrors('No')` will now result in an error.

It is now possible to set all deployment configuration settings dynamically using of the `rulesenginecomponent.setproperty` method. For example:

```
select rulesengine.setproperty('batchloglevel'[, '<value>'])
select rulesengine.getproperty('batchloglevel')
```

### 106446 DROP UNDEFINED TABLES

The Drop Undefined Tables option has been moved from the Definer to USoft BenchMark.

### 108830 JDBC 34589

Using JDBC to read meta data from a USoft application would result in an error with no tables displayed. This has been fixed.

### 108831 JDBC 34730

The USoft JDBC Driver did not return the foreign key name when calling `getCrossReference(...)` and `getForeignKeys()`. This has been fixed.

### 108832 JDBC 34730

If you asked for a table list using `getTables()` with parameter set to null the driver did not respond. This has been fixed, it now returns all table names.

`getTransactionIsolation()` would result in an exception. This has been fixed, it now returns the value 4 (`TRANSACTION_REPEATABLE_READ`), which is the default setting.

`supportsBatchUpdates()` resulted in an exception. This has been fixed, it now returns `False`.

### 108833 JDBC 34730

Using the USoft JDBC driver access resulted in the error message:

#### **getTableTypes is not supported.**

This has been fixed: it now returns `TABLE` as available table type.

#### 107925 RULES ENGINE

The "BatchManipulation" transaction mode now works correctly.

#### 108983 RULES ENGINE 38136

A SQL statement containing a ROWID pseudo column could have resulted in an error when the SQL was checked. This has been fixed.

#### 108910 UPGRADE 38117

Following an upgrade to USoft 8.0, menu items representing a menu page were always shown at the top of a menu page, ignoring the specified sorting order of items. This has been fixed.

#### 104136 UPGRADE 38082

The USoft 8 upgrade utility now migrates the following Windows Designer application properties to the Authorizer Deployment Configuration.

Update Supertype On Ins  
Number Of Update Columns  
Lock Parent On Seqno  
Max Constraint Depth  
Lock Foreign Keys  
Wait For Lock  
Show Component Errors  
Show Rdbms Errors

Contact USoft support if you require a script to repair an existing upgrade.

#### 109004 WEB DESIGNER

Changed templates and variables:

CreateJavaScript.xsl:

```
<xsl:template name="InsertCommonHandlers">
```

CustApplet.xsl:

```
<xsl:variable name="CustAppletVersion">
```

Grids.xsl:

```
<xsl:template name="CreateGridIndexes">
```

USApplet.xsl:

```
<xsl:variable name="USAppletVersion">  
<xsl:template name="CreateDataSourcesInfoObjs">  
<xsl:template name="CreateDataSourcesInfoObj">  
<xsl:template name="CreateLookupInfoInputs">  
<xsl:template match="GroupControlPage">  
<xsl:template name="SetControlInCell">  
<xsl:template name="SetBasicStyles">  
<xsl:template match="TreeNodeControl">  
<xsl:template name="SetAttributesForTextControl">  
<xsl:template match="InputControl[@type='text' or  
@type='password' or @type='img']">  
<xsl:template name="InputControl">  
<xsl:template name="TextControl">  
<xsl:template match="InputControl[@type='textarea']">  
<xsl:template match="InputControl[@type='custom' or  
@type='htmlarea' or @type='static']">  
<xsl:template name="InsertRadioButton">  
<xsl:template match="InputControl[@type='radio']">  
<xsl:template name="InputControlRadio">  
<xsl:template match="InputControl[@type='checkbox']">
```

```
<xsl:template name="SetCheckboxAttributes">
<xsl:template name="SetOptions">
<xsl:template match="InputControl[@type='select']">
<xsl:template name="InputControlSelectAttributes">
<xsl:template name="InputControlSelect">
```

If you have overwritten one or more of these templates in an alternative directory in CustApplet.xml you should adapt these templates in the CustApplet.xml file(s).

#### **108392 WINDOWS DESIGNER**

A combo box now supports the cue-banner functionality.

## **Miscellaneous Notes and Bug Fixes for USoft 8.0.1E**

Most of the remaining notes include an identification number. These numbers are Prorep IDs. Prorep is the information system that USoft uses internally. If you use these numbers in your communications with USoft, our staff will know exactly what you are referring to.

#### **108818 APPLICATION PROPERTIES**

Application property settings were not used correctly in the production (runtime) environment. This has been fixed.

#### **98983 BATCH 32779**

It is now possible to specify the Batch log level in the authorizer deployment configuration.

#### **107435 BENCHMARK**

If the Profiler was started and BenchMark was then stopped without stopping the Profiler first, a crash could have occurred if BenchMark was started a second time and the Profiler then restarted. This has been fixed.

#### **109124 DEFINER 38151**

When defining an import task that included an external set with virtuals, an error would occur when checking the SQL statements of the import task. This error would occur when the SQL statement used one of the virtuals. An error would also occur when validating the job that called the import task. This has been fixed

#### **108889 REPOSITORY MANAGER 38126**

When making a difference analysis with Repository Manager, external types that had been deleted were not listed in the correct order. This could have resulted in an error, trying to delete a non-existing record. This problem has been solved.

#### **108865 RULES SERVICE**

If you press Stop, followed by Run in the Rules Service browser configuration utility, this now also refreshes the Authorizer.

#### **109128 UPGRADE 38136**

During a USoft upgrade on Oracle an error would occur when updating system messages. This has been fixed.

#### **109127 VIOLATION REPORTS 37990**

Running an uppercase violation report could have reported violations on uppercase date domain columns. This has been fixed.

#### **108348 WEB DESIGNER**

It is now possible to have different colors for odd and even lines in a GridControl.

#### **109103 WEB DESIGNER 38159**

Changing the Position property on a Related Page could have resulted in errors. This



has been repaired.

#### 109211 WEB DESIGNER

Changed templates and variables:

CustApplet.xml:

```
<xsl:variable name="CustAppletVersion">
```

Grids.xml:

```
<xsl:template name="GridCellControlRow">
```

USApplet.xml:

```
<xsl:variable name="USAppletVersion">  
<xsl:template match="/Combined/Page">  
<xsl:template name="ImageInputControl">  
<xsl:template name="TextControl">  
<xsl:template name="InsertRadioButton">  
<xsl:template name="InputControlRadio">
```

If you have overwritten one or more of these templates in an alternative directory in CustApplet.xml you should adapt these templates in the CustApplet.xml file(s).

#### 108679 WINDOWS DESIGNER 38023

Following a 'Save All' it was no longer possible to change application properties. This has been fixed.

## Miscellaneous Notes and Bug Fixes for USoft 8.0.1F

Most of the remaining notes include an identification number. These numbers are Prorrep IDs. Prorrep is the information system that USoft uses internally. If you use these numbers in your communications with USoft, our staff will know exactly what you are referring to.

#### 109252 BINARY FILES AND JAVA 38259

Binary files can be copied using either the "binaryfile" Off the Shelf component or the "usfile" internal component.

The following examples copy a binary file using the Java "binaryfile" Off The Shelf component:

```
INVOKE BinaryFile.Write  
WITH  
SELECT  
(  
  
INVOKE BinaryFile.Read  
WITH  
SELECT 'c:\temp\AAP1.doc'  
)
```

The following examples copy a binary file using the "usfile" internal component:

```
INVOKE USFile.WriteBinaryFile  
WITH  
SELECT 'c:\temp\AAP2.doc',  
(  
  
INVOKE USFile.ReadBinaryFile  
WITH  
SELECT 'c:\temp\AAP1.doc'
```

)

#### **109392 UPGRADE 38331**

Some dates were present in the language data files in the format DD-MON-YYYY. This resulted in this errors on non-English databases following an upgrade. This problem has been fixed.

#### **109335 UPGRADE 38351**

The upgrade procedure did not add all new data types to the repository. This has been fixed.

For repositories that have already been upgraded, the following steps can be taken to update the datatypes:

- Start the Definer on the (previously upgraded) repository.
- In SQL Command, execute:

**action job(UPGRADE\_USD\_7TO8\_PHASE12)**

#### **109251 UPGRADE 38291**

An upgrade of multiple applications for which application settings had been changed with Windows Designer would fail. This problem has been fixed.

#### **109362 WEB APPLICATIONS**

Changed templates and variables:

CustApplet.xml:

```
<xsl:variable name="CustAppletVersion">
```

Grids.xml:

```
<xsl:template name="CreateGridIndexes">
```

USApplet.xml:

```
<xsl:variable name="USAppletVersion">
```

```
<xsl:template match="Combined">
```

```
<xsl:template name="InsertCommonVariables">
```

If you have overwritten one or more of these templates in an alternative directory in CustApplet.xml you should adapt these templates in the CustApplet.xml file(s).

#### **109300 WEB DESIGNER**

The Web Designer TreeControl JavaScript function initTree now has a second optional parameter array. This array can be used to ensure that a tree is initially expanded.

#### **108253 WEB DESIGNER**

Web Designer application might have stopped working when executing a test in BenchMark, if the test contained a call to set-focus(default). This problem has been fixed.

## **Miscellaneous Notes and Bug Fixes for USoft 8.0.1G**

Most of the remaining notes include an identification number. These numbers are Prorrep IDs. Prorrep is the information system that USoft uses internally. If you use these numbers in your communications with USoft, our staff will know exactly what you are referring to.

#### **109480 BINDER**

This problem concerns the Rules Service item properties in the Binder for any Windows operating system from XP up to and including Windows 7. If a Windows service with a name that sorts alphabetically before the "<Not dependent on local service!>" option was installed (as is the case with some Windows services

associated with .NET), then selecting <Not dependent on local service!> and pressing the Install button would result in the Binder crashing. This has been fixed.

#### **109321 UPGRADE 38136**

The upgrade procedure from USoft version 7 to 8 took a lot of time to process the UPGRADE\_WIN\_DES\_TASKS and FILL\_CROSSREF\_DECISIONS tasks, especially for large repositories. Also, the memory usage for the FILL\_CROSSREF\_DECISIONS task was significant.

The performance has now been improved and the memory usage of the FILL\_CROSSREF\_DECISIONS task has been reduced.

The upgrade still requires a lot of memory. To avoid problems, a PC with 4 GB of memory is recommended.

#### **109456 109565 WEB DESIGNER**

Changed templates and variables:

CustApplet.xsl:

```
<xsl:variable name="CustAppletVersion">
```

Grids.xsl:

```
<xsl:template name="CreateGridIndexes">
```

Menus.xsl:

```
<xsl:template name="menuline">
```

USApplet.xsl:

```
<xsl:variable name="USAppletVersion">  
<xsl:template match="Combined">  
<xsl:template name="InsertCommonVariables">  
<xsl:template name="InsertScripts">
```

If you have overwritten one or more of these templates in an alternative directory in CustApplet.xsl you should adapt these templates in the CustApplet.xsl file(s).

## **Miscellaneous Notes and Bug Fixes for USoft 8.0.1H**

Most of the remaining notes include an identification number. These numbers are Prorrep IDs. Prorrep is the information system that USoft uses internally. If you use these numbers in your communications with USoft, our staff will know exactly what you are referring to.

#### **109552 UPGRADE 38480**

Following an upgrade, jobs would occasionally be marked as correct, even when some tasks were not marked as correct. This has been fixed.

When a SQL task only has incorrect SQL statements, but these SQL statements are set to not-active, then the SQL Task should be marked as correct. The upgrade procedure however, did not accomplish this. This has been fixed.

The upgrade procedure updated the changed-on/by fields. This is not desired behavior. The upgrade procedure no longer updates the changed-on/by fields.

#### **1095777 UPGRADE 38136**

Upgrades occasionally failed during phase 3, while calculating of the decision cross reference information. This has been fixed.

#### **109598 WEB APPLICATIONS**

A new action: refreshRecord(), is now available for use in USoft Web applications. The action is implemented as a JavaScript function.

Syntax:  
refreshRecord(dsRef)

where dsRef is a Data Source reference, such as the name of the Data Source or its path or its alias.

#### **109364 WEB DESIGNER**

As of USoft 8.0.1H, the jQuery JavaScript library is shipped with the Web Designer.

For more information about jQuery, refer to <http://jquery.com/>

#### **109651 WEB DESIGNER**

Changed templates and variables:

CustApplet.xml: `<xsl:variable name="CustAppletVersion">`

USApplet.xml: `<xsl:variable name="USAppletVersion">`

If you have overwritten one or more of these templates in an alternative directory in CustApplet.xml you should adapt these templates in the CustApplet.xml file(s).

## **Miscellaneous Notes and Bug Fixes for USoft 8.0.11**

Most of the remaining notes include an identification number. These numbers are Prorep IDs. Prorep is the information system that USoft uses internally. If you use these numbers in your communications with USoft, our staff will know exactly what you are referring to.

#### **109834 BUTTON TYPE PROPERTY 38628**

This is where you can specify certain aspects of button behavior. This property can have one of three possible values:

1. Standard
2. SplitButton
3. CommandLink

The Standard button type (the default) has no special characteristics.

If the Button Type property is set to SplitButton, a Menu Page property becomes active. This Menu Page property contains a menu definition that is displayed when the area with the arrow is clicked.

If the Button Type property is set to CommandLink, a Note property becomes active. This Note property contains the note that is displayed under the label.

These button types can only be used on Vista and Windows 7 machines. On other machines a gray area is displayed.

#### **109634 DEFINER 34184**

If more than one constraint was checked in the same transaction this would occasionally lead to strange behavior, like unexpected errors or to no checking at all. This has been fixed.

In addition, the manner in which the checking of SQL was handled in various places

in the Definer (constraints, SQL tasks, logical views, etc) has been modified so they all now work the same way:

- If no transaction was active when the check button was pressed, and the only action performed by the Rules Engine is the setting of the correct flag, the Rules Engine will do so and automatically commit. In all other situations it will leave the transaction open.
- Messages are no longer displayed if the checking was successful.

#### **109845 PAGE ENGINE 38544**

An attempt to update a parent record and insert a child record in the same screen and in the same transaction would lead to an error, with the following message:

**Error: com.usoft.PageEngine.UpdateManipulation cannot be cast to com.usoft.PageEngine.InsertManipulation. Please contact your system manager**

This has been fixed.

#### **109705 RULES ENGINE**

Restrictive intra-record constraints can now be deferred until commit-time. This is useful if you want the check to be performed after deferred corrective constraints have fired, for example.

#### **109728 RULES ENGINE**

Until now it was not possible for the primary key (or parts of the primary key) to be a foreign key (or part of a foreign key) if it was in a subtype table. This has been improved: the primary key column(s) of a subtype table can now be (part of) a foreign key.

#### **109818 SOLID 38406**

When using Solid, you would get an error when you used the New Window Set menu option in the Windows Designer. This has been repaired.

#### **109805 SOLID 38402**

When upgrading a SOLID repository from 7.0/7.1 to 8.0 some special characters (like è) used in prompts/labels, menu entries etc, would be corrupted. This has been repaired.

#### **109841 TEXT EDITOR FONT 38387**

In previous versions of USoft 8.0, the default font for text editor fields was slightly larger than the font for the other character fields, which could affect the layout of updated applications. This has been improved.

## **Miscellaneous Notes and Bug Fixes for USoft 8.0.1J**

Most of the remaining notes include an identification number. These numbers are Prorep IDs. Prorep is the information system that USoft uses internally. If you use these numbers in your communications with USoft, our staff will know exactly what you are referring to.

#### **110056 IO FORMAT 38749**

Tables were not correctly created when working with a number domain that had no decimals defined, but the IO Format did have decimals. This has been fixed.

#### **108738 OBJECT ACTIVATOR 38446**

As of USoft 8, the Object Activator has become a modal dialog. As a consequence it is no longer possible to drag a window class from the catalog on to the dialog. This has been solved by adding an extra tab to the dialog that shows all the window classes.

**109982 RULES SERVICE 38711**

During the configuration of the Rules Service, a Java Script error would occasionally occur on Internet Explorer 8. An error message like 'Object required' was generated on the third step of the configuration after the 'Choose Application' screen was completed. This problem has been fixed.

Note that if you ignored this message, it would have no influence on the function of the Rules Service. Pressing the Compatibility view button in Internet Explorer 8 could also solve the problem.

**1099626 SOLID 38401**

When running an upgrade on a Solid database, an error could occur when the resource castCharParameters was set to True. The same error could also occur when checking a SQL task in the Definer. This has been fixed.

**110020 SQL SERVER 38739**

On SQL Server, when using the records() keyword on a statement that contained an ORDER BY clause in combination with an INVOKE or component-table, this would occasionally have unexpected results: it would look as if the ordering was performed only on the received limited amount of records. This has been fixed.

**110093 TEXT EDITOR 38704**

In version 8.0, when inserting characters in a text editor with limited data length, the entire insert would be undone (i.e. all inserted characters discarded) if the data limit was reached. This has been repaired.

**109961 WEB APPLICATIONS 38701**

When running two web applications simultaneously on the same machine, one application would occasionally show unreadable text where normal data was expected, while the other application would run normally. This has been fixed.

**110141 WEB DESIGNER**

Changed templates and variables:

CreateJavaScript.xsl:

```
<xsl:template name="Insert_ESI_XML_EventListener">
```

CustApplet.xsl:

```
<xsl:variable name="CustAppletVersion">
```

Grids.xsl:

```
<xsl:template name="GridHeaderCell">
```

USApplet.xsl:

```
<xsl:variable name="USAppletVersion">
```

```
<xsl:template name="GroupControl">
```

**110054 WINDOWS DESIGNER 38704**

In recent patches, new controls that you inserted in the Windows Designer were not visible in the run-window until they were saved. This has been repaired.

**109675 WINDOWS DESIGNER 384777**

In earlier version 8.0 patches, the position of a Grid Column could not be changed using the Property Inspector. This has been repaired.

## Miscellaneous Notes and Bug Fixes for USoft 8.0.1K

Most of the remaining notes include an identification number. These numbers are Prorrep IDs. Prorrep is the information system that USoft uses internally. If you use these numbers in your communications with USoft, our staff will know exactly what

you are referring to.

#### **108459 DEFINER 38770**

If you used the New Subdomain right mouse menu option on a domain in the Definer Catalog, it would result in an error. This has been repaired.

#### **108477 DEFINER 38618**

Some items in the Definer's Teamwork menu did not call the intended windows correctly. This problem has now been fixed.

#### **110104 WEB APPLICATIONS 38529**

IO Formats for numbers in variables now work correctly.

#### **110296 WEB APPLICATIONS**

Changed templates and variables:

CustApplet.xml:

```
<xsl:variable name="CustAppletVersion">
```

USApplet.xml:

```
<xsl:variable name="USAppletVersion">  
<xsl:template match="Combined">  
<xsl:template name="InsertCommonVariables">  
<xsl:template name="InsertScripts">  
<xsl:template name="DeclareScriptFiles">  
<xsl:template match="BlockButtonControl">  
<xsl:template match="ButtonControl">  
<xsl:template match="OnLookup">
```

If you have overwritten one or more of these templates in an alternative directory in CustApplet.xml you should adapt these templates in the CustApplet.xml file(s).

#### **110035 110195 WEB DESIGNER**

Four new publication configuration properties have been introduced:

1. JQueryCompatibility
2. JQueryVersion
3. JQueryUIVersion
4. JQueryUITheme

To update the repository the tables must be recreated. Make sure 'Drop Existing Tables' is not set otherwise all tables will be empty after the operation.

#### **JQueryCompatibility property:**

This property handles compatibility issues with earlier versions of Web Designer applications. When set to 'usoft7' buttons have the same appearance as USoft7 Web applications. All other values display buttons in the latest jquery style.

#### **JQueryVersion property:**

This publication property changes the jquery version that is included in the Web page. Possible values of the properties are:

**local:** <script type="text/javascript" src="js/jquery.js"></script>

- **1:** <script type="http://ajax.googleapis.com/ajax/libs/jquery/1/jquery.min.js"></script>

- **1.4:** <script type="http://ajax.googleapis.com/ajax/libs/jquery/1.4/jquery.min.js"></script>

- **1.4.2:** <script

```
type="http://ajax.googleapis.com/ajax/libs/jquery/1.4.2/jquery.min.js"></script>
```

If the property is not specified in the publication configuration the publication takes '1' as default. Specifying only part of a three digit version number means that the latest version of what is specified will be used (e.g. 1.2 loads 1.2.6).

#### **JQueryUIVersion property value:**

This publication property changes the jquery user interface (ui) version that is included in the Web page. Possible values of the properties are:

**local:** `<script type="text/javascript" src="js/jquery-ui.js"></script>`

- **1:** `<script type="http://ajax.googleapis.com/ajax/libs/jqueryui/1/jquery-ui.min.js"></script>`

- **1.8:** `<script type="http://ajax.googleapis.com/ajax/libs/jqueryui/1.8/jquery-ui.min.js"></script>`

- **1.8.5:** `<script type="http://ajax.googleapis.com/ajax/libs/jqueryui/1.8.5/jquery-ui.min.js"></script>`

If the property is not specified in the publication configuration the publication takes '1' as default. Specifying only part of a three digit version number means that the latest version of what is specified will be used (e.g. 1.7 loads 1.7.3).

#### **JQueryUITheme property:**

This publication property changes the theme that is used to display jquery ui objects. Possible values of the properties are:

**none:** no jquery ui is included

- **local:** `<link rel="stylesheet" type="text/css" href="css/themes/base/jquery.ui.all.css">`

- **base:** `<link rel="stylesheet" type="text/css" href="http://ajax.googleapis.com/ajax/libs/jqueryui/<JQueryUIVersion>/themes/base/jquery-ui.css">`

- **sunny:** `<link rel="stylesheet" type="text/css" href="http://ajax.googleapis.com/ajax/libs/jqueryui/<JQueryUIVersion>/themes/sunny/jquery-ui.css">`

If the property is not specified in the publication configuration the publication takes 'base' as default.

#### **How To Apply A Different jQuery Theme**

To apply a different jQuery theme:

Open <http://jqueryui.com/themeroller>

2. From this page, get an idea of the available themes, for example by using the Gallery tab on the Left in the ThemeRoller catalog..
3. Use the name of your favorite jQuery theme, e.g. sunny, eggplant, or ui-darkness.
4. From the Web Designer menu, select Publish, Publication Configurations.
5. Query your publication configuration, and change the JQueryUITheme publication property to the required theme.
6. Have a look at the result, for example by running the design window.



## Miscellaneous Notes and Bug Fixes for USoft 8.0.1L

Most of the remaining notes include an identification number. These numbers are Prorep IDs. Prorep is the information system that USoft uses internally. If you use these numbers in your communications with USoft, our staff will know exactly what you are referring to.

### 110135 METHOD CALLS 38770

Property settings on the application shell did not work correctly in previous 8.0 patches, and in fact would lead to a crash. For example:

```
Application.Window.title('MyTitle')
```

This has been repaired.

### 110287 RULES SERVICE

The log level setting of the Rules Service, which can be changed in the 'Choose Options' screen during the configuration of the Rules Service was not saved. This has been fixed.

### 109814 RULES SERVICE

It is now possible to start and stop the BenchMark profiler from the configuration screen of the Rules Service. You can find the options (Start and Stop Buttons) to do this on the last Rules Service configuration page, i.e. the overview page. If you press the Start button, all engines will be stopped with the exception of the engine that is running BenchMark. If you then press the Stop button, all previously running engines will be restarted.

### 108387 SPREADSHEET LOOK

Newly entered data in a spreadsheet field was lost if the spreadsheet was resized. This has been fixed.

### 110270 SQL PARSER 38520

The SQL query parser added data source aliases before keywords such as VARCHAR, DATE, etc. These are not columns, therefore these aliases were incorrect. This has been fixed.

### 110163 SQL SERVER 38739

On SQL Server, when using the records() keyword on a statement that contained an ORDER BY clause in combination with an INVOKE or component-table, this would occasionally have unexpected results: it would look as if the ordering was performed only on the received limited amount of records. This has been fixed.

### 110221 TREE VIEWS 38619

Under some circumstances bold text in tree view items would not be fully displayed. This has been improved.

### 110274 WEB APPLICATIONS 38856

On a Relate or Lookup webpage, if a placeholder was used to refer to a data source on a previous page, it was resolved as if that data source was on the current page, and therefore resulted in a failure, even if all paths were valid. This has been fixed.

### 110302 WEB APPLICATIONS 38881

Adding a second new record before committing the first record would sometimes result in an "Internal error" message. This has been fixed.

### 110307 WEB APPLICATIONS 38803

Function closePage has now a fourth optional argument: steps (default: 1). This argument is a positive number, and specifies how many times the closePage has to be performed.

#### 110317 WEB APPLICATIONS 38873

In a Web application, if an update was made on a record, but other fields were also changed by constraints, these changes were not reflected on the Web page following a storeRecord, unless an explicit refresh was made for that record. This has been fixed.

#### 110308 WEB APPLICATIONS 38877

If embedded data sources were used on a Web page and its lookup page, unnecessary (performance intensive) queries were performed when visiting the lookup page after inserting a new record on the main page, if the data was not first committed or the Check button clicked. This could have resulted in major performance issues. This has been fixed.

#### 110310 WEB APPLICATIONS 38878

The JavaScript function 'refreshRecord' always refreshed its children. There is now an extra argument that can cancel the refresh of the children.

syntax: **refreshRecord(dsRef,refreshChildren)**

example: **refreshRecord("EMP", false)**

#### 110326 WEB APPLICATIONS 38889

From a Lookup or Related page, referring to an inserted record resulted in various problems such as internal errors and exceptions, bad references (the record could not be found), etc. Also, a placeholder such as getValue would always return the NULL value for these records, even if the requested value was already supplied. Both problems have been fixed.

#### 110392 WEB APPLICATIONS 38862

The functions:

```
executeQuery()  
executeSQLStatement(id,anoFunc)  
handleEvent(label,anoFunc)
```

now have an optional last argument that is an anonymous function. If this function is added, the main function is executed asynchronously and the anonymous function is executed as a callback function. The anonymous function has an optional argument, that represents the state object.

Example:

```
executeQuery("EMP","DEPT","FUNC",  
            function(state){  
                alert(state.event)  
            }  
            )
```

Use of this argument is only required if the chosen browser is Internet Explorer, and where the function concerned is likely to take some time to complete. In this situation, executing the function asynchronously can solve possible sequencing issues.

## Miscellaneous Notes and Bug Fixes for USoft 8.0.1M

Most of the remaining notes include an identification number. These numbers are Prorep IDs. Prorep is the information system that USoft uses internally. If you use these numbers in your communications with USoft, our staff will know exactly what you are referring to.

#### 110517 APPLICATION PROPERTIES 38979

The 'Icon Name' application property was not displayed in the Property Inspector. This has been fixed.

**110531 BATCH 38994**

When validating a job which contained an export task, the external set of the export task would not be set to correct after the validation was performed. As a result the job itself would not be set to correct. This has been fixed.

**110532 BATCH**

When validating a job which called a SQL task or import task which had an incorrect inactive SQL statement, the message "job validated" would be displayed. However, that would be followed by error messages concerning the incorrect inactive SQL statements. This has been fixed: inactive SQL statements are ignored during validation.

**110080 BATCH 38233**

If you used old style action syntax in an action task in a batch job, this would occasionally lead to a crash, in particular when the action concerned was action-decision(). If you used the method call syntax, all would work well. This has now been fixed, old style action syntax can be used without problems.

**110366 BATCH 38921**

Following an import task, USoft Batch now adds .suc or .err extensions to the complete original filename when creating status files. For example:

**file1.exp** now results in **file1.exp.suc**

**109066 MENUS**

In previous versions there were problems with the handling of menu accelerators. When the menu item for the accelerator was disabled (grayed out), the handling was passed to its parent object. A typical result of this was that when using the Text editor in SQL Command, typing 'Ctrl+s' would insert strange control characters. This has now been fixed.

**110536 MENUS 38993**

To add a horizontal line to a Menu Page, in the Windows Designer, add a Menu Line at the appropriate position (specify the position using the Position property) and make sure that the Script property is empty, i.e. no script specified. If no script is specified for a menu line, a horizontal line is always inserted into the menu page.

**107394 109926 MS XML 38681**

USoft delivers MS XML v6.0 during installation. However, the Web Designer required MS XML v4.0. This mismatch has now been fixed. You now only need MS XML v6.0.

**109150 OUTER JOINS 38111**

In USoft 8.0, a check was added to ensure that an outer join expression could not contain a subselect. As a result it was also not possible to call a method in such situations. This check has been adjusted in the sense that it is not allowed to use a subquery or methods that uses columns of the surrounding query. If the method call or subquery is self-contained it can be used within an outer join expression.

**110429 PRODUCTION 38915**

If a window was opened in maximized mode, the menu bar did not display minimize, close, or restore buttons. These buttons were displayed correctly when maximizing from a normal or minimized condition. This has been improved.

**110474 RULES ENGINE**

Setting the deployment configuration property 'Update super type on insert' to 'True' no longer worked: subtype records could no longer be inserted. This has been fixed.

**110267 RULES SERVICE 38859**

When the Rules Service logged an error message with the format:

**"HResult of <error-code-as-hexadecimal> (<same-error-code-as-number>)"**

**returned. Error Source: <error-source> Error Description: <error-description>"**

it would occasionally add strange characters at the beginning of the message. This has been fixed.

#### **110340 SOLID SERVER 38403**

If you inserted a large amount of text (>400.000 characters) into a CLOB field in SOLID, USoft could crash when this text was fetched by a query. This has been fixed.

#### **110523 TEXT EDITOR 38914**

The Text Editor control did not respond to a change of the 'Background Color' property. This has been fixed.

#### **109916 UPGRADE 38513**

Menu objects having the same name caused inconsistencies following an upgrade. This has now been fixed. The upgrade renames the duplicated name so that is a unique name.

#### **110530 WEB APPLICATIONS**

All pages have to be re-published, because the file Esi2WS.xsl has changed.

Changed templates and variables:

CreateJavaScript.xsl:

```
<xsl:template name="InsertAction">
```

CustApplet.xsl:

```
<xsl:variable name="CustAppletVersion">
```

USApplet.xsl:

```
<xsl:variable name="USAppletVersion">  
<xsl:template name="CreateDataSourcesInfoObj">  
<xsl:template match="DialogControl">
```

If you have overwritten one or more of these templates in an alternative directory in CustApplet.xsl you should adapt these templates in the CustApplet.xsl file(s).

#### **110542 110527 WEB APPLICATIONS 39016**

The USoft Web Service Component (USoftComJavaCall.dll) would occasionally stop responding. The only solution in this case was to terminate the dllhost.exe process containing the component. This could have resulted into a '006~ASP 0177 ~Server.CreateObject Failed' error message or a 'Java heap error' message on the client side. This has been solved.

#### **110524 WEB APPLICATIONS 39012**

For data sources with embedded data sources, incorrect values were queried for the fields of the embedded data sources, if a new record was inserted on the data source. This resulted in incorrect information being displayed for that new record. This has been fixed.

#### **110465 XML IMPORT**

When importing a subtype record using XML.Import with no explicit UPDATE or INSERT directive in the XML, the data would not be imported if the supertype of the record existed but the subtype record did not exist. This has been fixed.

#### **110411 XML IMPORT**

VerifyOriginalValues parameter for XML.Import has a new possible value:

**NoCheckOnPk.**

When an attempt is made to delete or update a record by an XML.Import session for which the value 'NoCheckOnPk' is set for VerifyOriginalValues, if the record does

not exist in the database then no error will be generated.

The processing instruction that can be used for a multi import is:

**verify-original-values="no-check-on-pk".**

## Miscellaneous Notes and Bug Fixes for USoft 8.0.1N

Most of the remaining notes include an identification number. These numbers are Prorrep IDs. Prorrep is the information system that USoft uses internally. If you use these numbers in your communications with USoft, our staff will know exactly what you are referring to.

### 110678 ACTIVEX 39087

ActiveX property settings were not reflected in the user application. Changes to property settings also had no impact. Both of these problems are now fixed.

### 110618 BATCH 39098

When running a job from an iterated decision in a rules service using end-user messages, the error message is now directed to the table as intended.

### 108602 DEFINER 35749

Characters such as > (greater than), < (less than), or " (double quote) are no longer allowed in the Definer, when naming domains or domain constraints, for example. If these characters are used, problems will occur with our XML technology. Please run the Columns:domain constraints violation report on your Definer.

### 110477 RULES ENGINE

Cascade rule 'nullify' can only be used when the foreign key is not mandatory and when the foreign columns are not mandatory. However, it is possible to have a multi-column foreign key where only one or a few columns are not mandatory. In that case it is possible to specify cascade rule NULLIFY. The rules engine, however, tried to nullify all columns, causing an error message to be displayed stating that the column is mandatory. This has been fixed. Now only non-mandatory columns are nullified.

### 110472 RULES SERVICE 38475

The USoft Binder requires 'elevated privileges' in order to be able to install (or remove) the Rules Service. This is also the case if you want to be permitted to see whether or not the Rules Service is running, etc. However, if USoft Binder was not started with the 'Run as administrator' option, it did not get the elevated privileges it required, and did not warn the user of this fact. This could have resulted in the user not being able to install the Rules Service without any indication why. This has been changed, the default required user account control level has now been changed to show that USBinder.exe requires Administrator privileges to run.

Another issue is that USoft Binder would almost always attempt to use Internet Explorer when the Rules Service Configure button was pressed. This has been changed, the Binder will now use the default browser to configure the Rules Service. Note that this does \*not\* mean that all Rules Service functionality will work with browsers other than Internet Explorer!

### 110633 SECONDARY WINDOWS 35963

When using Secondary windows embedded with the pre-record-entry set, this action would fire too often. This has now been fixed.

### 110629 SQL SERVER 37777

An attempt to use Find in Repository on SQL Server with the Match Case checkbox set to off/unchecked would result in errors. This has been fixed, on SQL Server it is now only possible to use Find in Repository with Match Case on/checked.

### 110666 WEB APPLICATIONS 38710

The length of search fields was restricted by their data length or their IO-format. This is now fixed.

#### **110693 WEB APPLICATIONS 39107**

A default query (for example, from the executeQuery action) also initiates a record count. This is also the case for the default query of child records in a relationship. In certain logical views, this record count can occasionally cause an error in the Rules Engine.

The Count with Execute Query property can be used to solve this problem. By default, this property is set to Yes (the situation described above). If set to No, this property prevents a default record count function from being executed.

#### **110797 WEB APPLICATIONS**

Note that all pages have to be (re-)published, because the file Esi2WS.xml has changed.

Changed templates and variables:

CustApplet.xml:

```
<xsl:variable name="CustAppletVersion">
```

USApplet.xml:

```
<xsl:variable name="USAppletVersion">  
<xsl:template name="TextControl">  
<xsl:template name="SelectAttributes">
```

If you have overwritten one or more of these templates in an alternative directory in CustApplet.xml you should adapt these templates in the CustApplet.xml file(s).

#### **110626 WINDOW/PAGE SETS 37932**

There was no inheritance information available on the 'Window Sets' tab of the Windows Designer catalog or the 'Page Sets' tab of the Web Designer catalog. A new context menu entry has been added, to allow the display of the location of the selected item in the window/page catalog.

#### **110641 WINDOWS DESIGNER 39079**

An attempt to drag and drop an OUTPUT\_COLUMN in the design area would cause a crash. This has been fixed.

#### **110547 WINDOWS DESIGNER 38995**

If you made intensive use of Controls for Stylesheet this could have caused unexpected results. This has been fixed.

#### **110583 WINDOWS DESIGNER 38981**

The design tree for menus now also shows the prompt, mnemonic and accelerator.

## **Miscellaneous Notes and Bug Fixes for USoft 8.0.1o**

Most of the remaining notes include an identification number. These numbers are Prorep IDs. Prorep is the information system that USoft uses internally. If you use these numbers in your communications with USoft, our staff will know exactly what you are referring to.

#### **110699 APPLICATION STRINGS 38243**

When populating the Application Strings table, the prompts of a prompt list were stored together as one string, but when translated strings are loaded, the separate prompts are translated. This resulted in apparently missing translations. This has been improved: the prompt list is now stored as separate strings in the application strings table.

**110804 BITMAP IMAGES 38911**

In 8.0, bitmap Image controls were too big, because the style sheet specified a border width of 1, which was unnecessary. This has been repaired.

**110700 C SHARP 39032**

If you checked a C# component with generated parameters, and then checked again without generated parameters, non-existent errors would be reported. This has now been fixed.

**110799 END USER MESSAGES 39115**

Filtering a message using end-user message mode resulted in empty messages being displayed. This has been fixed. Note that message 60558 (Script: <StatementType> in table ""<TableName>"" not accepted for record <RowNumber> ) is now no longer displayed in end-user mode. You can change this any time by editing usererror\_enduser.xsl.

**110263 ERROR MESSAGES 38832**

In some cases, authorization error messages were incorrectly displayed. This has been repaired.

**110951 ERROR MESSAGES 39250**

If an update through ODBC fails because of the read\_only\_odbc deployment configuration setting a more appropriate message is now displayed. The message "No Insert /Update Rights" has been changed to "Engine is read only"

**110815 ERROR MESSAGES 39034**

A secondary key containing a sequence number (seqno) domain would erroneously produce an RDBMS error message when duplicate values were detected. This has been fixed.

**110749 ERROR MESSAGES**

An additional index on a non-mandatory subtype column would result in an RDBMS error message. This has been fixed.

**110708 EVENT VIEWER 39122**

On 64-bit machines, due to an incorrectly configured manifest file for USD.EXE the Event Viewer logged a Side-by-Side error message. This has now been fixed.

**110668 GLOBAL VARIABLES 39042**

Method call syntaxes using the form 'Variables.MyTextBox' or 'Variables.MyTextBox()' were not correctly resolved. This has been fixed.

**110750 IMAGES 38615**

Images on buttons did not appear as intended when the 'Show image in W95 look' property was set to No and no background color was specified. This effect was especially noticeable on Windows 7. This has been repaired.

**110866 RDMI 39202**

When using a Java RDMI component the following error message may have been generated on some systems:

```
'RDMI Middleware error:  
Cannot find jvm.dll in your path. You path is: C:\PROGRA~1\USD80\bin;C:  
\PROGRA~1\USD80\java\sun\jre\bin\client;C:\PROGRA~1\USD80\redist\java\sun  
\jre\bin\client;.....'
```

The cause of this error was a dependency of the Java jvm.dll on msvc71.dll, which is a runtime dll belonging to the Microsoft Visual C Runtime library. This has been fixed.

**110970 SOLID 39276**

On Solid, the Repository Manager did not install properly. This has been fixed.

**110971 SOLID 39278**

On Solid, in the Repository Manager it was not possible to specify a Database Connection String containing spaces. This has been fixed.

**110780 SQL COMMAND 39147**

The default open file behavior of SQL Command has changed. It now opens 'All Files (\*.\*)' by default.

**110893 SQLSCRIPT()**

SqlScript() used with a set report file did not work correctly in combination with a decision. This has been fixed.

**110949 TEXT EDITOR 38387**

The default zoom of the text editor control was not correctly initialized. It has now been set to the smallest possible value.

**110689 UPGRADE 38599**

Upgrades to USoft 8.0 on large repositories (>50 tables) could occasionally lead to the following RDBMS error message:  
":ORA-24330: Interne OCI-fout."  
And in some cases could lead to an application dump. This has been solved.

**111058 WEB APPLICATIONS**

Changed templates and variables:

CustApplet.xml:

```
<xsl:variable name="CustAppletVersion">
```

Grids.xml:

```
<xsl:template name="GridCellControlRow">
```

Menus.xml: All templates

USApplet.xml:

```
<xsl:variable name="USAppletVersion">  
<xsl:template match="Combined">  
<xsl:template match="FrameControl">  
<xsl:template name="SetClassAttribute">  
<xsl:template name="InsertRadioButton">  
<xsl:template name="InputControlRadio">
```

If you have overwritten one or more of these templates in an alternative directory in CustApplet.xml you should adapt these templates in the CustApplet.xml file(s).

**110654 WINDOWS DESIGNER 38476**

There were some problems with in-place renaming of painted column controls in the Design Tree. This has now been fixed.

## **Miscellaneous Notes and Bug Fixes for USoft 8.0.1P**

Most of the remaining notes include an identification number. These numbers are Prorep IDs. Prorep is the information system that USoft uses internally. If you use these numbers in your communications with USoft, our staff will know exactly what you are referring to.

**111266 110753 BINDER FILE LOCATION 37933**

Some customers prefer to place Binder files and application flat files in a folder



outside the USoft Install folder tree to avoid having to move these files when a new USoft version is installed. An undocumented feature of USoft was the option of locating flat files in the same folder as the USoft Binder file, which would result in correctly working applications when started from a binder. This did not work correctly on newer Windows versions; this has now been fixed.

#### **110987 111093 DYNAMIC CONSTRAINTS**

During development it is useful to be able to use new or changed constraints without having to restart your application. In a client-server application, this can be accomplished by running the RefreshConstraints() method. In a web environment, Rules Service engines must be restarted.

You can also make use of the new Auto\_Refresh\_Constraints Deployment Configuration parameter. By default this is set to False which results in the situation described above. If this parameter is set to True, at the beginning of each new transaction the Rules Engine will check if there have been any changes made to the constraint definitions since the last time they were read. If so, all current constraints are cleared from memory and a new set of constraints are loaded before continuing with the transaction.

An example of where this feature would be useful is in combination with the modules functionality. You could add a special separate module to your application where all your 'dynamic' or temporary constraints are stored. This module would only be used for as long as it was needed. For example, a special extra discount for certain customers for a limited period.

Note that the Auto\_Refresh\_Constraints parameter and the RefreshConstraints method only affect the refreshing of constraints. This means that if an additional table is also added, for example, and it is used in a constraint, this will result in errors.

Note also that before you can use this new parameter, you must perform a "Create Tables ..." on your USoft Authorizer.

#### **111204 LOGIN 39373**

The use of the function ApplicationLogin() is no longer supported within the context of a script. To achieve the desired result, use:

```
INVOKE rulesengine.setuser WITH SELECT :"*TopCase.login.user",  
:*TopCase.login.password", 'parameter-notused
```

#### **110351 LOOKUPS 38789**

It is now possible to use the <windowname>.Window(args).Create() syntax for a Lookup Dialog. This has been improved.

NOTE: If you call a Lookup Dialog using this syntax, the Accept function is not aware of the lookup functionality. You must define that yourself using User-defined Properties.

#### **110473 MSVBM60.DLL 38912**

USoft 8 now ships the latest version of msvbvm60.dll = 6.00.98.15.

#### **111203 MULTI\_TABLE QUERIES 39369**

Some customers still use info windows with queries referring to multiple tables. Windows that are still defined in this manner should now work in the same way as they did in previous versions.

We advise you to use logical views in such cases, wherever possible.

#### **111064 111239 PAGE ENGINE 39331**

When navigating to a Lookup page from a newly inserted record that had not yet been committed, an error occurred when mandatory fields were not yet filled in, even if

this Lookup page was used to select a value for this mandatory field. This has been fixed.

#### **111201 POPUP EDITOR 39365**

In recent releases, a runtime font change on text fields would have no effect. This has been repaired.

#### **111281 REMOTE RULES SERVICE 39421**

If you used the USoft Remote Rules Service with batch jobs in which decisions were used that contained a Commit() action as their Yes action, this could have resulted in stability problems for the Rules Service. This has been solved.

#### **108943 RULES SERVICE 39039**

If a Rules Engine was busy with a query that took a long time to process, other Rules Engines on the same Rules Service would not run until the processing of the query was finished. This has now been repaired. Rules Engines will no longer wait for a process that was previously started on another Rules Engine to complete.

#### **110298 RULES SERVICE**

The "Choose an Application" Rules Service configuration page has two new fields:

##### **Definitions From**

This specifies the location where the Rules Engine can find the definitions it needs. This can be one of the following:

Automatic: If an application flat file can be found in the file search path it is used.

Database: The application will run from repository, even if the flat file exists in the file search path

Specify Location: Specify the folder where the flat file is located. If this option is chosen, the following field is displayed:

##### **Flat File Folder**

Supply the (path)name of the folder where the flat file of the application is located.

#### **111079 SQL COMMAND 38505**

If a menu bar was not present when scrolling in SQL Command, a crash could have occurred. This is now fixed.

#### **110992 SQL SERVER**

When using a Job parameter that resolves to NULL, on SQL Server a crash could have occurred. This has been fixed, you will now receive an error message.

#### **111050 SQL SERVER 39289**

Due to a change in MS SQL Server sysobjects, the meaning of user\_id() -the uid column- has changed. The consequence of this change was that on databases where the query:  
select USER\_ID('name'),SCHEMA\_ID('name')  
selected different values, the creation of tables (creapp.exe) on the Definer would fail. This is now fixed.

#### **111145 TEXT EDITOR 39366**

In Version 8.0, multiline text in text objects (e.g. text editors) takes up a little more space than in 7.0, due to increased space between lines. One has to zoom out a little to restore the original space. Not every font handles this zoom correctly: the default font (MS Sans Serif) loses quality when scaled down. We have therefore changed the default font to Microsoft Sans Serif, which handles zooming in/out better. Also, we have introduced a property called Initial Zoom (resource name initialZoom) with which you can influence the initial size of the fonts used in text objects. By default,

this property has the value 0. Negative numbers scale down, positive scale up. You can either set this property generically, by adding a line like  
\*TopCase\*Text.initialZoom: -1  
to your USDIW file or on the command line or you set it for individual text fields using the Property Inspector.

#### 111229 WEB APPLICATIONS 39469

Lookup buttons in GridCell Controls were placed under the input control, when they should be placed after the control.. This has been solved.

#### 111334 111228 WEB APPLICATIONS

Changed templates and variables:

CustApplet.xml:

```
<xsl:variable name="CustAppletVersion">
```

Menus.xml: All templates

USApplet.xml:

```
<xsl:variable name="USAppletVersion">  
<xsl:template name="CreateKeys">  
<xsl:template match="OnLookup">
```

If you have overwritten one or more of these templates in an alternative directory in CustApplet.xml you should adapt these templates in the CustApplet.xml file(s).

#### 111168 WEB DESIGNER

The IDs of Menu Items and Menu Lines had to start with 'I\_' for correct menu behavior. This is no longer necessary. You can clean up your repository with the following SQL statement:

```
DELETE FROM T_e_type Tet  
WHERE EXISTS (  
    SELECT "  
    FROM T_e_type Tetc,T_e_heritage Teh  
    RELATE Tetc "INHERITS" Teh  
    WHERE Tet.typename = 'id'  
    AND Tet.is_property = 'Y'  
    AND (  
        Tet.prop_value_short like 'I_%%'  
        OR Tet.prop_value_short like 'Item_%%'  
        OR Tet.prop_value_short like 'Line_%%'  
        OR Tet.prop_value_short like 'Mi_%%'  
    )  
    AND Tet.context_id = Tetc.id  
    AND Teh.heritage_name IN ('MenuPage', 'MenuLine')  
)
```

#### 111008 WEB MENUS

The Menu Controls in our web applications had a number of restrictions For example: when the property 'Orientation' was set to Horizontal, it would result in an unordered list of items. We have now restructured the menus and added a number of methods (jQuery plugins):

us\_menu(jQuery\_selector)

us\_menu has two methods:

```
prop(name, value)  
item(jQuery_selector)
```

item has also two methods

```
prompt(htmlString)  
remove()
```

### Examples:

You have a MenuControl with the id 'MC'.

The MenuControl has the following properties:

- Menu name: A
- Menu Orientation: Horizontal
- Initial Fold Level: 1.

You have two MenuPages with the names 'A' and 'B'.

MenuPage A has the MenuLines 'X' and 'Y' (as Id)

You have a button with on the onclick event a callClientScript action.

### Example for prop():

You put on the callClientScript the following script:

```
$("#MC").us_menu()  
    .prop("MenuName", "B")  
    .prop("FoldLevel", 2)  
    .prop("Orientation", "Vertical")
```

If you open the page you will see MenuPage A with a horizontal orientation.

If you click on the button you will see MenuPage B with a vertical orientation and a fold level of 2.

Now you set the callClientScript script of the button to:

```
$("#MC").us_menu()  
    .item('#X')  
    .prompt('calendar')
```

If you open the page you will see MenuPage A with a horizontal orientation.

If you click on the button you will see that the prompt of X has changed to an image and a text

Set the callClientScript script of the button to:

```
$("#MC").us_menu()  
    .item('#Y')  
    .remove()
```

If you open the page you will see MenuPage A with a horizontal orientation.

If you click on the button you will see that MenuLine y is removed.

## Miscellaneous Notes and Bug Fixes for USoft 8.0.1Q

Most of the remaining notes include an identification number. These numbers are Prorrep IDs. Prorrep is the information system that USoft uses internally. If you use these numbers in your communications with USoft, our staff will know exactly what you are referring to.

### 111379 BACKGROUND FETCH 39290

In recent patches, the Info Window Background Fetch property was not visible or settable using the Property Inspector in the Windows Designer. This is now possible.

### 111199 INITIAL ZOOM PROPERTY

The Initial Zoom property added in the previous patch as a command line or resource file setting can now be set for Text objects in the Property Inspector of the Windows Designer.

### 108517 LOOKUPS

Lookup functionality (F12) was not available in Query Mode. This has now been fixed.

### 111292 MENUS 39498

Attempting to set or change a menu line condition in the Windows Designer did not have any result. This has been repaired.

#### **111363 111372 MENUS 39374 39431**

Since USoft 8, bitmaps added to menus are not only shown on the toolbar, but also in the menus themselves. This does not combine well with some display themes, notably Windows Classic. We have added an application-level property "hideMenuBitmaps" that will restore the menu view of versions 7, i.e. bitmaps only shown on the toolbar.

The default value of this property is No. You can set it in the USDIW file or on the command line. In a future patch it will be settable as a property in the Windows Designer Property Inspector.

#### **110999 REMOTE RULES SERVICE**

For performance reasons, ODBC tracing is no longer enabled by default when you create a new DSN.

#### **110559 UPGRADE 38407**

Subtype presentations are handled a little differently in version 8 than version 7. This could cause problems if presentations had been painted, and following an upgrade from 7 to 8 were subsequently adapted in subclasses. The upgrade has been improved to correct this.

#### **111323 WEB APPLICATIONS 39459**

It was not possible to change a menu that was controlled by the USoft Authorizer following a login. This is now possible.

Example:

- Add an afterlogin event to the Application Login Page
- Add a callClientScript action with the script:  
if (loginSucceeded)  
    uwaTop.\$("#ApplicationMenu").us\_menu().prop("MenuName",uwa.gen.menu)
- Run the web application
- When on the Application Login Page and after clicking the Log In button, the correct menu is now shown.

#### **111324 WEB APPLICATIONS 39460**

Fields from a lookup data source cannot be queried using the getValue() JavaScript function, because it always returns the value of the first foreign key column for the record it points to. However, it is sometimes useful to be able to request the value of such a lookup data source field. For this reason, a new function has been added:

```
getLookupValue(<data source name>,<data source item>)
```

This function returns the actual value of the lookup data source for the current selected record. When used on another data source item (which is not a lookup data source), it will give the same value as getValue() does.

#### **111423 WEB APPLICATIONS 39590**

When querying a data source that contained a Relate control, a query error could have occurred if the data source this Relate control referred to contained an embedded data source. This has now been fixed.

#### **111447 WEB APPLICATIONS**

New functions added to Interface.js:

```
function acceptLookupValue(keepOpen)  
function cancelWindow()  
function getLookupValue(dsRef,itemName)
```

Functions moved to Obsolete.js:

```
function assignValueToControl(control,value)  
function createRecords()  
function executeDeferredQuery(dsRef)  
function getPairedValue
```

```

(dsRef,itemNameFrom,value,itemNameGetValue)
    function setDateFieldFrom2VirtualFields
(tableDSName,tableColumn,varSetDSName,fromDateName,toDateName)
    function setPreviousGroupDisplay(num,display)
    function getCellsOfColumn(dsRef,gridCellId)
    function setCellValue(td,value)
    function setSameValueForAllRows(dsRef,gridCellId,value)
    function synchronizeControl(control)

```

Changed templates and variables:

USApplet.xsl:

```

<xsl:template name="InsertCommonVariables">
<xsl:template name="InsertScripts">
<xsl:template name="InsertJSInits">
<xsl:template match="ColumnControl">
<xsl:template match="HtmlElementControl">

```

Menus.xsl:

```

<xsl:template name="submenuScript">

```

If you have overwritten one or more of these templates in an alternative directory in CustApplet.xsl you should adapt these templates in the CustApplet.xsl file(s).

#### **111370 WINDOWS DESIGNER 39489**

The SelectField call on a Text Editor Column (CLOB) did not work correctly. Only selected text was copied to the clipboard. If no text was selected nothing would be copied. This has now been fixed, before the copy is performed, a Select All action is automatically performed.

#### **111366 WINDOWS DESIGNER 39439**

Labeling an expression used in a select list with the name of a database column would generate warning message on startup of the window. This has been fixed.

#### **111263 WINDOWS DESIGNER 39394**

In the Windows Designer, opening a property inspector on a List view could occasionally have caused a crash. This has been repaired.

## **Miscellaneous Notes and Bug Fixes for USoft 8.0.1R**

Most of the remaining notes include an identification number. These numbers are Prorrep IDs. Prorrep is the information system that USoft uses internally. If you use these numbers in your communications with USoft, our staff will know exactly what you are referring to.

#### **111413 AUTHORIZER 39579**

The Authorizer would occasionally crash if references to non-existing conditions were present. This was only the case if direct database manipulations had been made outside the USoft environment. This has been fixed.

#### **111516 BENCHMARK 39198**

Warning messages are now also stored in a BenchMark profile.

#### **111214 EDITOR 39395**

Changing data in the popup editor of a related window would occasionally result in unsaved data. This happened when two popup editors were opened from a parent window and a related child window at the same time. When the popup editor of the parent window contained unsaved data and the popup editor of the child window tried to save its data, the data of the child window may have been lost because the parent window was locked. This has been fixed.

#### **111453 EDITOR 39587**

Field content of a field was scrolled to the end when leaving a field. This has been improved.

**110335 JOINED COLUMNS 38837**

Windows with multiple joined columns to the same parent using different (non-mandatory) relationships would not always query correctly when the Optimize Joined Column Fetch property was enabled. This has been repaired.

**111544 111138 ORACLE 39291**

In ORACLE, when using rowids, a query like:

**SELECT col1, col2, 'mylocalexpression' FROM mytable**

as the underlying query of a window would cause an error when executing the query. This has been repaired.

**111369 ROLLBACK MESSAGE 39486**

The rollback message in the Dutch version of USoft contained an unnecessary extra period (.) character. This has been removed.

**111466 SQL SERVER 39601**

An attempt to use Find in Repository on SQL Server with the Match Case checkbox set to off/unchecked would result in errors. This has been fixed. On SQL Server it is now only possible to use Find in Repository with Match Case on/checked. This applies to Definer, Windows Designer and Web Designer

**111588 UPGRADE 39462**

The migration of windows from the USoft version 7 task structure to version 8 Window Sets during an Upgrade process did not work satisfactorily. This has been improved.

**111322 WEB APPLICATIONS 39463**

Changing the synchronization data source property from one variable data source to another resulted in an error message, however the synchronization worked correctly. This error message has now been removed.

**111265 WEB DESIGNER 39398**

Integer checks on search fields have been improved.

**111415 WEB DESIGNER 39565**

If you ran Web Designer pages with a different GUI application name than the application name in the Authorizer, a failure would occur. This has been fixed by using the application name in the connection specification in the Publication Configuration.

**111368 WINDOWS DESIGNER 39458**

Following an upgrade from version 7 to version 8, "Convert ... To Type ..." errors would occasionally occur that did not occur in version 7. This has been fixed.

## **Miscellaneous Notes and Bug Fixes for USoft 8.0.1S**

Most of the remaining notes include an identification number. These numbers are Prorrep IDs. Prorrep is the information system that USoft uses internally. If you use these numbers in your communications with USoft, our staff will know exactly what you are referring to.

**111435 AUTHORIZATION 39485.**

All set user-related actions (e.g. refreshing the menu) are now always executed when calling:

**INVOKE RulesEngine.SetUser**

This is also the case if the new user is the same as the current user. For maintenance purposes, a new RefreshAuthorization method has been added to the internal RulesEngine component. If you execute:

#### **INVOKE RulesEngine.RefreshAuthorization**

this instantly refreshes all authorization data regardless of the cache refresh period.

#### **111605 111615 WEB APPLICATION 39463**

If you changed the setting of the synchronization data source property from one variable data source to another, this would result in an error message, in spite of the fact that the synchronization worked correctly. This error message has now been removed.

#### **111443 REPOSITORY MANAGER 39613**

On Solid, in the Repository Manager an error occurred when the Repository Baskets window was opened. This has been fixed.

#### **111202 111468 RULES SERVICE 39358**

The following methods are supported for use in a Rules Service environment, for example, in a decision running in a Rules Service. See your USoft Developer Reference help for more information about these methods.

ActionDecision()  
ActionDoNothing()  
ActionStartJob()  
CommandSystemBackground()  
CommandSystemForeground()  
CommandWindows()  
DataRdbmsStatement()  
FileExists()  
MessageError()  
MessageInformation()  
MessageLanguage()  
MessageWarning()  
RefreshConstraints()  
ResourceFileUpdate()  
RuleProfilerDescription()  
RuleProfilerStart()  
RuleProfilerStop()  
SqlScript()  
ValidateJob()

#### **111709 TEXT EDITOR 39761**

The font size used for brace highlighting was set higher than default font. This affected the interline spacing, as this was determined by the highest font size in use. This has been fixed.

#### **111576 UPGRADE 39384**

In some circumstances, following an upgrade of USoft version 7 to 8 the Message Categories Table in the Definer was incomplete. This has been solved.

#### **111452 UPGRADE 39604**

An upgrade from USoft version 7 to 8 on a case-sensitive SQL Server database version 2005 or higher could have failed. An RDMS error message like the following may have been displayed:

"Error Source: Microsoft OLE DB Provider for SQL Server. Error Description: Invalid column name 'param\_name'."



This problem has been fixed. The underlying reason for this problem was that the UPPER function on SQL Server on fields with data type text and ntext failed. New functions TO\_VARCHARMAX and TO\_NVARCHARMAX have now been introduced should you wish to convert these types explicitly to a varchar(max) or nvarchar(max) type.

#### **111634 WEB APPLICATIONS 39744**

A javascript error would be displayed when entering non-numerical values in a numerical search field. This has been fixed.

#### **111534 WEB APPLICATIONS 39644**

On a web page, a NavigateTo action from a page of the class RelatedPage or LookupPage to another page of a different class (e.g. RelatedPage to InfoPage) resulted in an internal error message, and required the web application to be reopened.

The internal error has been removed. However, the NavigateTo action described above will still lead to an erroneous state and should never be used in this context. NavigateTo from one page of the same type to another (e.g. InfoPage to InfoPage, and RelatedPage to RelatedPage) works correctly, but in order to return from the RelatedPage on which one or more NavigateTo actions have been performed to its (parent) InfoPage (or an earlier RelatedPage perhaps), a ClosePage action must be executed for every NavigateTo action executed on this page.

#### **111552 WEB DESIGNER 39478**

The getSearchValue placeholder must not refer to variable data sources. If you attempt to do this, you will now receive an appropriate error message.

##### **Task Mode Property**

If you set this property to Edit mode for an input ColumnControl, this specifies that the Page Engine is to maintain all changes between the ColumnControl value and the data source column value.

If you set this property to Search mode, this enables searching in the corresponding data source. Before calling executeQuery, the Page Engine will perform automatic setSearchValue calls for each field in search mode on the corresponding data source. Searching on a variable data source is not possible, so do not set this property to Search mode for an input ColumnControl that corresponds to variable data source.

#### **111529 WINDOWCLOSEALL() METHOD**

The WindowCloseAll method now has a new option:

##### **WindowCloseAll(CLEAR\_CACHE)**

This removes the window from the cache. Reopening the window will result in recalculation of authorization.

#### **111685 WINDOWS DESIGNER 39747**

On some rare occasions when the same painted window was opened twice (so both windows open at the same time) an inconsistency message was shown:

**Some paintings in this application cannot be solved due to an inconsistency. A list of these paintings is given below.**

This has been solved.

## **Miscellaneous Notes and Bug Fixes for USoft 8.0.1T**

Most of the remaining notes include an identification number. These numbers are Prorrep IDs. Prorrep is the information system that USoft uses internally. If you use these numbers in your communications with USoft, our staff will know exactly what

you are referring to.

#### **111656 PRODUCTION 39695**

Due to an incorrect assumption in the code, under certain circumstances a crash could have occurred. This problem has been fixed.

#### **111734 RULES SERVICE**

Although the 'SqlScript=' part of SQL-over-HTTP queries was case-insensitive, the 'Password=' part was case-sensitive. This inconsistency has been resolved, both are now case-insensitive.

#### **111759 SQL SERVER 39847**

On SQL Server it was not possible to log in from the Application Login dialog. This Application Login dialog pops up, for example, if an incorrect user/password combination exists in the binder. This has been solved.

#### **111530 SQL SERVER 39582**

SQL Server can optionally be installed with a named instance. If named instances were used this could have resulted in problems if you defined separate properties for repository and application. This could have resulted, for example, in an RDBMS error when checking constraints or decisions. This has been solved.

#### **111691 SQL SERVER**

On SQL Server undoing an exclusion of a consumed interface could cause an RDBMS error. This has been solved.

#### **111574 TREE VIEWS**

Tree Views will now show an infotip when the mouse is moved over the various items. To use this feature, add a column or expression with the label "TREE\_INFOTIP" to the tree view, for example:

```
SELECT family_name, empno, birthdate "TREE_INFOTIP" from employee
```

#### **111429 UPGRADE/SOLID SERVER 39493**

During an upgrade from USoft 7 to USoft 8 on Solid RDBMS versions (>4.5), constraints larger than 32K may have been truncated. This has been solved.

#### **111806 USOFT XSL COMPONENT 39866**

When the USoft XSL component was applied with transform parameters, these parameters were not cleared from cache. As a result, subsequent use of XSL transformations via this component may have addressed the parameters still in cache. This resulted in a loading error if such a parameter addressed an xml document that was no longer available. If the document was still available, the unwanted loading of the document would result in a performance penalty. This problem has now been fixed: the cache is now refreshed with each use of the component.

#### **111715 WEB APPLICATIONS**

On a web page, insertion of a record where one of the foreign keys was not mandatory, and also had the value NULL on the parent record, prevented the record from being inserted. This has been fixed.

#### **110907 WEB APPLICATIONS 39879**

Several fixes and improvements have been made:

When viewing a web page that contained a data source and a related data source and the parent record had a changed value, the changed values from the previous child records were copied to the child records of the other parent when it was selected. This has been fixed.

Several improvements to the support of cascading update rules and cascading delete rules have been made for web pages.

Multiple manipulations on the same record sometimes resulted in an error. This has been fixed.

## Miscellaneous Notes and Bug Fixes for USoft 8.0.1U

Most of the remaining notes include an identification number. These numbers are Prorrep IDs. Prorrep is the information system that USoft uses internally. If you use these numbers in your communications with USoft, our staff will know exactly what you are referring to.

### 111815 FLAT FILES 39889

When creating flat files, an optimization was applied that skipped 'redundant' local settings. For behavior properties this could have resulted in a change of execution context of the script. This has been repaired.

## Miscellaneous Notes and Bug Fixes for USoft 8.0.1V

Most of the remaining notes include an identification number. These numbers are Prorrep IDs. Prorrep is the information system that USoft uses internally. If you use these numbers in your communications with USoft, our staff will know exactly what you are referring to.

### 111934 ACTIVEX COMPONENTS 40008

In version 8.0, accessing methods of sub-objects of ActiveX components did not always work well if the sub-object was returned by a method/property, e.g. ActiveDocument in a WordApplication object. This has been improved.

### 111892 GETVALUE() PLACE HOLDER 39971

Using the getValue() place holder to refer to a non-queried related data source could have resulted in a crash of the Page Engine component. This has been fixed.

### 111846 LOG FILES 39856

The Rules Service no longer uses the system temp folder (%TEMP%) for logging purposes.

### 111662 MENU CONDITIONS 39742

Menu items that should have been disabled by an Authorizer condition were still active. This has been repaired.

### 111783 MENUS 39643

In recent version 8 patches, dynamically changing the bitmap of a menu item using a decision and the MenubarMarkItem() method could have resulted in a crash. This has been repaired.

### 111795 MESSAGES 39871

Constraint messages triggered by a batch job were not displayed in web applications when the Rules Service was in end user message mode. This has been repaired

### 111885 SCROLLBAR 39950

In a multi-record window, if a query returned fewer records than could be shown on the display, the scrollbar would only show an extra line after you finished inserting all the empty lines. This has been improved: the scrollbar will adapt as soon as you start inserting the last visible line.

### 111758 SOLID SERVER 39837

On Solid, locking a static table that was itself a subtype of another table could have

resulted in a crash. This has been solved.

#### **111817 SORT ORDER 39899**

Subtypes in a subtype group were presented in alphabetical order (of the prompts), regardless of the positions specified in the Definer. This has been repaired.

#### **111887 SQL SERVER 39935**

Updating a CLOB field on SQL Server (Oledb) where the updatable field was composed of an expression that was not a CLOB could have resulted in truncation of the data. An example could be:

```
update TABLE1 set COL1=(select 'more than 128 characters'+COL1 from TABLE2)
```

This has been solved. A workaround could be to use the TO\_CLOB function in such a case.

#### **111888 TRANSLATED STRINGS 39964**

In situations where reverse translations (from translated string back to original) were required, the conversion would fail resulting in an empty string. This has been repaired.

#### **110756 UPGRADE 38360**

If you had made adaptations to USoft standard menu lines in USoft version 7 (for example, the menu lines in STD\_FILE or STD\_BOX) these changes would be discarded when upgrading to 8.0. This has been fixed.

#### **111880 UPGRADE 39955**

Following an upgrade, a constraint that should have run against a table with a subtype would run against the sub-type table's 'parent'. This issue has been fixed in a recent version of USoft.

#### **111753 WEB APPLICATIONS 39463**

Synchronization of variable data sources over multiple related and embedded pages did not work: you would either get an error message, or no value for the variables in such data sources. This has been fixed.

#### **111818 WEB APPLICATIONS 39861**

A new javascript function fillSelectWithQuery has been added, which allows a dropdown list to be filled with data that has been directly queried from a data source:

Syntax: fillSelectWithQuery(select,dsRef,valueItem,displayedItem)

Example:

```
fillSelectWithQuery("select_dropdown","T1","PK","COL_1")
```

#### **111972 WEB APPLICATIONS**

New functions added to Interface.js:

```
function getHostVar(name)
function getGenericHostVar(name)
function fillSelectWithQuery(select,dsRef,valueItem)
```

Changed templates and variables:

USApplet.xsl:

```
<xsl:template name="InsertCommonVariables">
<xsl:template name="CreateDataSourcesInfoObjs">
<xsl:template name="CreateDataSourcesInfoObj">
<xsl:template name="CreateColumnsInfoObj">
```

If you have overwritten one or more of these templates in an alternative directory in CustApplet.xsl you should adapt these templates in the CustApplet.xsl file(s).

## Miscellaneous Notes and Bug Fixes for USoft 8.0.1W

Most of the remaining notes include an identification number. These numbers are Prorep IDs. Prorep is the information system that USoft uses internally. If you use these numbers in your communications with USoft, our staff will know exactly what you are referring to.

### 111732 BINDER 39811

The USoft Binder must be run by a user with administrator rights to install (or remove) the Rules Service, or even to see whether or not the Rules Service is running. However, users who need to start the Binder for other reasons than installing or removing a Rules Service are currently also required to have administrator rights, in spite of the fact that they are not needed. This has been changed. Only users of USoft Binder who try to install (or remove) a Rules Service while not having the required administrator-privileges will be warned that they need to restart the Binder with the run-as-administrator option.

### 111140 COMPONENTS

In previous releases, COM error message error 8001010E was occasionally generated due to a problem with the way that registry entries concerning Multi-threaded COM were read. This problem has now been fixed.

### 111995 IBM WEBSHERE 7.0

In order to properly support the IBM WebSphere 7.0 message queue, the following Java redistributable has been upgraded to a newer version:

**java/redis/sun/jms.jar**

### 110722 LOGICAL VIEWS

Updating a logical view from two different transactions could have resulted in program termination, after showing the correct RDBMS error message. This would occur if two unfinished transactions tried to update the same record described in a logical view. This has been fixed.

### 111877 MESSAGES 39954

In some cases, inserting a duplicate key using SQLScript would result in an RDBMS error message instead of the normal USoft duplicate key message. This has been fixed.

### 111252 MULTI-TABLE QUERIES

Some customers still use info windows with queries referring to multiple tables. In earlier 7.0 patches, such info windows were made non-updatable because they were deemed unreliable: some of these constructions could lead to errors and even crashes.

To allow customers to continue working as they did before with such windows, a property "allowUpdateOnMultiTableWindow" has been introduced, to be set in a resource file (e.g. usdiw) or on the command line.

Usage:

Resource file, add the following line:

```
allowUpdateOnMultiTableWindow: True
```

or,

On the command line, or as a special option in the Binder, add the following to the USoft startup command:

```
-xrm "allowUpdateOnMultiTableWindow: True"
```

### 111897 PASSWORDS

An attempt to change user to a user with an expired password as not handled correctly. This has been repaired.

**110224 110368 REMOTE RULES SERVICE**

If you queried metadata using MSQuery from Excel in combination with the USoft Remote Rules Service, where the 'Single record Fetch' checkbox was checked, this could have resulted in a crash. This has been fixed.

**110578 REMOTE RULES SERVICE**

Some ODBC Clients (like SQLCON32.exe) could not make a connection to the USoft Remote Rules Service. The User name and Password were not recognized correctly. This has been solved.

**109953 REMOTE RULES SERVICE**

ODBC clients using the USoft Remote Rules Service would occasionally crash when executing heavy queries. This was caused by the fact that all records fetched were stored on the client for further use. This can now be avoided by using a new switch in the configuration screen of the Remote Rules Service labeled 'Single Record Fetch'. This switch must be enabled to avoid the problem described earlier.

NOTE: ODBC describes the following two types of cursors:

- SQL\_CURSOR\_FORWARD\_ONLY where - the cursor behaves as a forward only scrolling cursor.
- SQL\_CURSOR\_STATIC where the data in the result set is static.

Choosing between these cursor types with a SQLSetStmtAttr() call should make the 'Single Record Fetch' switch unnecessary. This use of these different cursors is not currently supported.

**111281 REMOTE RULES SERVICE**

If you used the USoft Remote Rules Service with batch jobs in which decisions were used that contained a Commit() action as their Yes action, this could have resulted in stability problems for the Rules Service. This has been solved.

**110895 REMOTE RULES SERVICE 39828**

Using Crystal Reports in combination with USoft Remote Rules Service could have resulted in a crash. This happened when the Remote Rules Service used the 'Single Record Fetch' setting and the reports were generated with tables that are linked by means of several fields. This has been fixed.

**111881 RULES ENGINE 39956**

Transforming a SqlNode statement to plain SQL resulted in extra parentheses being added when this statement included a UNION ALL query that was not the main query. This resulted in errors if this UNION ALL query was embedded in an INVOKE statement. This has been fixed.

**103907 RULES SERVICE 36030**

Calling COM-components with statements sent to the Rules Service (for example by using the Remote Rules Service API) would occasionally result in a crash of the Rules Service. A special case is using stateful COM components that are called from the Rules Service. When applying this special situation the registry setting MultiThreaded COM must be set to 'true'.

**111197 111111 RULES SERVICE**

If a Rules Engine was busy with a query that took a long time to process, other Rules Engines on the same Rules Service would not run until the processing of the query was finished. This has now been repaired. Rules Engines will no longer wait for a process that was previously started on another Rules Engine to complete.

**111775 SQL SERVER 39604**

When a constraint text (CLOB field) on SQL Server (Oledb) contained more than 64K characters the USoft upgrade from Version 7 to 8 could have truncated this constraint text. This could have happened with any CLOB field in the Definer that

contained more than that amount of data. This has been solved.

#### **111119 SQL SERVER 39289**

Due to a change in MS SQL Server sysobjects, the meaning of user\_id() -the uid column- has changed. The consequence of this change was that on databases where the query:

```
SELECT USER_ID('name'),SCHEMA_ID('name')
```

selected different values, the creation of tables (creapp.exe) on the Definer would fail. This is now fixed.

#### **104400 TAB PAGES**

When changing the active tab page, the input focus was given to the first eligible control on the new active page. This should only happen when the change came from a navigation action (with keyboard or mouse), or when the focus already is within another page of the same tab control. This has been fixed.

#### **111918 TEXT EDITOR 39989**

The new (Scintilla) editor used for Text Editor (CLOB) fields did not support current record highlighting. This support has now been implemented.

#### **111922 USERGROUP() FUNCTION 39994**

When the Usergroup() function was used in an RDBMS function call it wasn't recognized. This has been fixed.

#### **111921 WEB APPLICATIONS 39992**

When inserting a new record on a web page, the newly inserted record must be selected. However, when setting the 'Copy Values' property to 'Yes', this was not the case. This has been fixed.

#### **111672 WEB APPLICATIONS 39705**

The USApplet transformation sheet in the <Web Publication>\xsl folder contains all default XSL template rules for the various XML elements that occur in the Combined.xml file.

It contains template rules for the Combined root element and for the Page element, which is a child element of the Combined element. It also contains template rules for all ButtonControl, GroupControl, GridControl, and TextColumnControl elements. You are invited to have a closer look at these transformation rules by opening the USApplet.xsl file.

However, you are strongly advised NOT to edit the USApplet.xsl transformation sheet, but to edit the CustApplet.xsl transformation sheet in the Alt Templates folder instead. Every time a new publication is made, the USApplet.xsl file is overwritten and the CustApplet.xsl file from the Alt Templates folder is copied to the <Web Publication>\xsl folder.

If you reinstall USoft, you must copy the CustApplet.xsl file from the Alt Templates folder to the <Web Publication>\xsl folder yourself.

#### **112024 WEB APPLICATIONS 40084**

Synchronization on a variable data source would work fine if you entered the original value yourself (or using JavaScript). If you attempted this synchronization using the variable set as output data source on an ExecuteSQLStatement action, the value was not stored correctly. This has been fixed.

#### **112034 WEB APPLICATIONS 40080**

In the case of a constraint failure on a web page, you would sometimes receive the following error message:

Error: manipulations can only be performed on Table DataSources

This has been fixed.

#### **112010 WEB APPLICATIONS 40060**

Internet Explorer 9 displayed Script error messages or froze the page when returning from a related page. This has to do with the stricter array handling of IE9. This has been fixed.

## **Miscellaneous Notes and Bug Fixes for USoft 8.0.1X**

Most of the remaining notes include an identification number. These numbers are Prorep IDs. Prorep is the information system that USoft uses internally. If you use these numbers in your communications with USoft, our staff will know exactly what you are referring to.

#### **112081 ACTIVEX 40125**

In complex ActiveX components, methods of sub-objects were not always identified correctly if a method with an identical name existed at a higher level. This has been fixed.

#### **111371 BENCHMARK 39292**

When trying to transform certain XML messages with Layout.xsl the previous version of the 3rd party Xalan library would cause a crash. This crash did not occur when using a more recent version of Xalan, so we have upgraded the Xalan library (and also the Xerces library as this is required by the newer Xalan version).

#### **112084 DOTNET 39863**

How to call the Assembly (DLL) for a DotNet Component from an alternative location:

To make use of an assembly at a location other than the default <usoftinstalldir>/bin folder, you can add it to the Global Assembly Cache (GAC).

Create a strong name for the assembly, using the Microsoft .NET Framework Strong Name Utility (sn.exe). For example:

```
C:\Program Files\Microsoft Visual Studio 8\SDK\v2.0\Bin\sn.exe" -k  
keyPair.snk
```

This newly created keyPair.snk file must now be referenced in the project Assembly information. In Visual Studio, add the following line to your AssemblyInfo.cs file:

```
[assembly: AssemblyKeyFileAttribute("c:\\outside_usoft\\<project_name>\\keyPair.snk")]
```

Where <project\_name> is the name of the project.

Rebuild your project.

This newly created <project\_name> assembly must now be added to the Global Assembly Cache. From the Windows Control Panel, Select Administrative Tools, followed by .Net Framework <version> Configuration, My Computer, then Assembly Cache.

Right click on the Assembly Cache item, choose Add from the resulting menu, and add the name of the <project\_name> assembly.

In the DotNet Components window of the Definer, add the name of the newly created <project\_name>.dll file to the 'Assembly References' field of the component.

Press Commit.



Press the Check button.

#### **111879 MESSAGES 39954**

In certain cases, inserting a duplicate key using SQLScript would result in an RDBMS error message instead of the normal USoft duplicate key message. This has been repaired.

#### **112133 ORACLE 40058**

An Oracle API function (OCISstmtExecute) was called with an incorrect parameter, which Oracle 11g 2 Unicode handled in a different manner to prior Oracle versions. This resulted in a failure when attempting to create tables. This has been fixed.

#### **112223 ORACLE**

As of USoft version 8.0.1X and higher, Oracle 8 is no longer supported. The most recent client software USoft links to is at the moment is Oracle Client 11.2.0.1.0. This means that Oracle 9, 10 and 11 are still supported and that the default USoft Oracle client driver has become an Oracle 11.2 driver.

#### **111713 OUTPUT ENCODING 39754**

SqlScript now has a new SET option to configure the output of a script.

#### **SET outputEncoding ANSI | UTF8**

If the output goes to a file this option specifies the encoding of the output file. Possible values are ANSI and UTF8. Use "SET outputEncoding" before "SET reportFile" in a script.

#### **111919 PERFORMANCE 39953**

In windows with many levels of embedded related windows, and heavy use of post-fetch methods and background fetching, so much CPU time may be used that user input becomes difficult and the window may seem to be frozen.

If this is the case, it may be beneficial to set a waiting period for the background fetch. You can do this by calling the new method:

```
SetBackgroundFetchDelay( nMillisec)
```

When this delay is set, background fetching will only be performed if there has not been a user-event for the last n milliseconds. Other idle time procedures are not affected. This setting works at application level.

#### **111803 QUERIES**

If you performed manipulations on an info window, and then fetched the value of a previously manipulated, non-displayed field (e.g. via a decision) while in query mode, you may have received garbage in the returned data. This has been repaired.

#### **81330 RULES ENGINE 26821**

When creating a script for the creation of the physical tables, indexes and sequences, the script would not contain the statements for the creation of the sequences. This has been fixed.

#### **112030 TEXT EDITOR 39936**

There are three ways in which you can fix the partial text line at bottom of the Text Editor field:

1. Adjust the Control height
2. Adjust the Font height
3. NEW: Adjust the Ascent and/or Descent of a line, using the Extra Ascent and/or Extra Descent properties for the text control.

#### **111858 UPGRADE 39805**

Following an upgrade to version 8, some ESI-settings for variables from older applications may need to be adjusted to prevent ESI inconsistency messages. The controls themselves still work correctly. Contact USoft support if you have this sort of problem after upgrading.

#### **112032 WEB APPLICATIONS 39732**

On a web page, when right-clicking on a select dropdown in a grid view, the associated record would not be selected. Moreover, when performing changes on such records, the result could have been changes on the wrong record (both visually and in transaction being sent back to the database). Also, editing a field in a grid view of a record that has related child records, could have resulted in displaying the wrong child records, if the edit on that parent record was illegal, especially when the change occurred in a different parent record than the one just selected.

All of these problems have been fixed.

#### **112087 WEB APPLICATIONS 40126**

There were issues when using Internet Explorer 9 in conjunction with arrays that were already (partly) freed. This has been fixed.

#### **110727 WEB APPLICATIONS**

A new publication property has been introduced: BrowserTitle. This property sets the displayed browser title to the value of this property. Its default value is "USoft Web Application", which is also the default title that has been used prior to the introduction of this property. If you want to use this property, you will need to re-create the Definer tables.

#### **112104 WEB APPLICATIONS**

When inserting and immediately updating a record on a data source with embedded data sources, occasionally the embedded data source's keys would be copied into the update XML.import. This should not have happened, and has been fixed.

#### **112137 WEB APPLICATIONS**

Changed templates and variables:

USApplet.xml:

```
<xsl:variable name="BrowserTitle"> (new top-level variable)
<xsl:template match="Combined"> (main template)
<xsl:template name="SelectAttributes">
```

uspublication.xml:

PUBLICATION/DEFAULTPAGES/BROWSERTITLE attribute added

If you have overwritten one or more of these templates in an alternative directory in CustApplet.xml you should adapt these templates in the CustApplet.xml file(s).

#### **112082 WEB APPLICATIONS 40121**

Performing a manipulation on one page, then navigating to a related page to perform further manipulations, could have resulted in one or more JavaScript errors upon returning to the first page again. This has been fixed.

#### **111951 WINDOWS DESIGNER 39695**

The Action property of the Label class has now been made available for use.

#### **112167 WINDOWS DESIGNER 39801**

The 'Border Width', 'Border Type', 'Border Color' properties for Label, PushButton, and various graphical controls can now be set at generic class level from the Controls tab.

#### **112134 XML IMPORT 40139**

If you performed an XML import from SQL Command where a large number of records existed in the XML, this could have resulted in an error in the following cases:

The application was running in debug mode with a termout window open.  
The Transactions window was open.

This has been repaired.

## Miscellaneous Notes and Bug Fixes for USoft 8.0.1Y

Most of the remaining notes include an identification number. These numbers are Prorrep IDs. Prorrep is the information system that USoft uses internally. If you use these numbers in your communications with USoft, our staff will know exactly what you are referring to.

### 112379 APPLICATION 40305

In recent patches a crash could have occurred if a window containing text editor columns, on which a cursorLineColor was set dynamically, e.g. via a preRecordCallback, was popped up out of residence. This has been fixed.

### 112185 BENCHMARK

Test profiles are now shown in descending order by default to improve the usability of USoft Benchmark.

### 112267 CREDENTIALS 40191

It is no longer possible to run a user application from repository without credentials.

### 112270 MENU CONDITIONS 40078

An Authorizer menu condition with state set to DISABLED did not work. This has been fixed.

### 112326 ORACLE

Starting an application on Oracle with termout shows that the USoft usdora.dll file is loaded at the beginning of the log. In some cases when an Oracle 11 client was used, termout showed an error message about a failure to load oraclient10.dll. Following this, it showed that the wrong version of USoft was loaded: usdora9.dll. An example of the termout output is:

```
'Attempt to load C:\Usd80\BIN\oraclient10.dll fails;  
Successfully loaded C:\Usd80\BIN\usdora90.dll'
```

This has been fixed. Note that no Oracle-specific functionality problems due to this issue have been reported.

### 112031 PERFORMANCE 40041

Some performance improvements have been made, especially when running against a Solid database.

### 112359 POPUP TEXT EDITOR 40305

In recent patches, editing data in a popup text editor of an inserted TextEditor object (not linked to a query column) could have resulted in a crash. This has been fixed.

### 112089 REPOSITORY OWNER

If you specified separate repositories for repository and application tables but did not specify an owner for the repository, you would have received an error message when trying to run from repository. This has been fixed.

### 112311 RULES SERVICE 39857

If you used a Solid database and started the Rules Service without Solid in its Environment Path the Rules Service could have crashed. This has been fixed.

#### **106614 SUBTYPES 37071**

USoft did not always handle subtype constellations efficiently, in particular where some subtypes had conditional restrictions. This has been improved.

#### **112310 SUBTYPES 40205**

When using subtype presentations (grouping and labeling of subtypes), in some cases a screen would not open and would crash. This has been fixed.

#### **111979 UPGRADE 38360**

If you had made adaptations to USoft standard menu lines in 7.0 (like the menu lines in STD\_FILE or STD\_BOX) those changes would be ignored when upgrading to 8.0. This has been improved.

#### **USOFT RULE LANGUAGE**

For some users, the use of SQL when specifying constraints can prove to be difficult. To aid these users, an alternative syntax is now available: USoft Rule Language. This goes some way towards simplifying the definition of constraints, without affecting the use of SQL for those users who prefer SQL. USoft Rule Language is only for use when defining constraints, that is, in the Table Constraints and to a lesser extent, Domain Constraints definition info windows of the Definer. See your USoft Help for more information on USoft Rule Language and how to use it.

To facilitate the use of USoft Rule Language, a number of changes have been made in the Definer:

All "Info Window Name" field prompts have been changed to "Object Name Plural".

- Two prompts in the Domain Constraints definition window of the USoft Definer have been changed:

Condition --> Do Not Allow That

- Correction --> Make Sure That (in these cases)

An Extra tab page has been added to the Table Constraints window to display the SQL equivalent of constraints written in the USoft Rule Language.

#### **112122 WEB APPLICATIONS**

If a query condition was set on a previous web page, it could sometimes cause a Null Pointer Exception when accessed on the current page. This has been fixed.

#### **112154 WEB APPLICATIONS**

On a web page, deleting a child record immediately followed by deleting its parent record resulted in an error message. This has been fixed.

#### **112219 WEB APPLICATIONS**

A number of problems associated with navigation between pages on IE9 have been fixed.

#### **112279 WEB APPLICATIONS**

On a web page, creating a record on a child (Related) data source without having a parent record selected or created, could have resulted in a Null Pointer Exception error. This has been fixed: you now get no error message, and no child record is created either.

#### **112285 WEB APPLICATIONS**

When using CheckData in OnSelectedRow it could happen that updating multiple rows and committing the changes wouldn't work. This has been fixed.

#### **112378 WEB APPLICATIONS**

Changed templates and variables:

USApplet.xml:

```
<xsl:template name="CreateColumnsInfoObj">
<xsl:template name="SetOptions">
```

If you have overwritten one or more of these templates in an alternative directory in CustApplet.xml you should adapt these templates in the CustApplet.xml file(s).

#### **111862 WEB APPLICATIONS 39871**

Constraint messages triggered by a batch job were not displayed in Web applications when the Rules Service was in end user message mode. This has been repaired

#### **112229 WEB APPLICATIONS 40190**

In certain circumstances, accepting a lookup resulted in an endless loop. This has been fixed.

#### **112180 WEB DESIGNER**

When publishing just one page, the cover page was not published automatically. This resulted in a non functioning default application. This has been fixed.

#### **112156 WEB DESIGNER**

The Option control Class now has an 'Extra HTML Attributes' property. This is where you can specify an additional HTML attribute list. For example, if you specify this list as:

```
a="b" c="d"
```

for a control, then the HTML source code for the control will contain:

```
<div a="b" c="d">.
```

#### **111063 WINDOWS DESIGNER 38400**

Using Windows type on a Text Editor component now works as expected.

#### **112324 WINDOWS DESIGNER 39695**

Text fields did not reset a 'bold' or 'italic' setting, when the font was changed back to normal. A change in text color was not effective until a subsequent font change. These issues have been repaired.

You can set a pointer shape on a Label, but until now this setting had no effect. This has been improved.

## **Miscellaneous Notes and Bug Fixes for USoft 8.0.1Z**

Most of the remaining notes include an identification number. These numbers are Prorrep IDs. Prorrep is the information system that USoft uses internally. If you use these numbers in your communications with USoft, our staff will know exactly what you are referring to.

#### **112468 CREATE TABLES 40366**

If you added a mandatory date column to an existing table (containing data), with the default value: \$\$CURRENTDATE\$\$,\$\$TRANSACTIONDATE\$\$ or similar, a crash could have occurred when attempting to create tables for the application from the Binder. This has been repaired.

#### **112272 DEFINER 40244**

In the case of a Master -> Detail, if you first changed the Detail then changed a column in the Master this would result in the first typed character being lost. This has been fixed.

**112283 HELP TEXT PROPERTY 39816**

By default this Web Designer property takes the value of the Column help text specified in the Definer. You can change this text by editing this property value. This text is displayed in the status bar of the web browser when hovering over the field with the mouse cursor and when the field has focus.

**112209 SQL SERVER 40179**

SQL Server fails to recognize dates with format 2011/0723131415. USoft now changes these to format 2011-07-23T13:14:15 which is a format that SQL Server should always recognize and is not dependent on the SQL Server settings.

**112086 TEAMWORK 40110**

The Business Rules approved flag will no longer be unchecked when an approved rule is imported. It will still be unchecked if the definition text changes.

**111590 WEB APPLICATIONS 39635**

The closePage action in combination with an executeQuery could have caused the isClosePage function to return True even after the parent page was loaded. This has been fixed.

**111953 WEB APPLICATIONS 39958**

A number of problems regarding (end-user) messages have been resolved:

Custom end-user messages defined in the Definer that are not of one of the system message classes, are now properly handled by the RulesEngine.TranslateMessage function instead of being displayed as a "Technical Error".

When the Rules Engine returns multiple messages on one request (for example, multiple constraint messages for one query), a web page that made this request would always show only the last of these messages. This has been corrected: all messages are now shown, in the correct order.

If a message was completely filtered by the end-user message filter, then the web page would show the text "null". This has been improved, it now displays "Internal error".

**112317 WEB APPLICATIONS**

Several message issues on web pages have been fixed:

Several popup messages that were not translated existed in web applications. These are now added to the translated messages list.

The Message Presentation property of a web page was ignored whenever a Message Area control was added to this page. This has been fixed; only when the Message Presentation property is set to Message Area, will the message be routed to these controls.

When visiting a related page without selecting a parent record, it resulted in a non-translated error message on the Related page, immediately followed by navigation back to the original page. This has been changed; you now get a translated message (depending on language setting), and it is now displayed on the calling (original) page, on which the message actually applies.

Message Area controls did not support multiple messages returned by a single action to the web server (Page Engine). This has been fixed; they are now capable of displaying multiple messages simultaneously.

Several messages were always displayed in alert boxes regardless of the Message Presentation property's value on the web page. This has been fixed.

**112196 112290 WEB APPLICATIONS 39795 40120**

A new section explaining how to translate web applications has been added to the help.

#### 112288 WEB APPLICATIONS 39968

You can confirm that a commit event has been handled correctly in a Web application by requesting an eventState together with a commit() insertable action. In the following example which can be added, the text: 'Succeeded' will be returned if the commit was successful.

```
commit(true)
if(eventState=="success")
{
    alert("Succeeded")
}
```

#### 112413 WEB APPLICATIONS 40322

There were a number of issues associated with memory usage in Internet Explorer 9. This browser handles array memory usage more strictly. USoft Web applications now handle array usage in a manner that suits IE9.

#### 111988 WEB APPLICATIONS 40049

When using a GroupControl with horizontal orientation there was a problem: only the ID of the first control inside the GroupControl was displayed. This has been fixed by setting each control inside its own table.

#### 112487 WEB APPLICATIONS

Changed templates, variables, messages and scripts:

USApplet.xsl:

```
(added) <xsl:template name="InsertCommonVariablesBeforeFiles">
<xsl:template name="InsertCommonVariablesAfterFiles">
(added) <xsl:template name="InsertScripts">
<xsl:template name="GroupControl">
```

Various changes in templates for support of internal web testing:  
<xsl:variable name="LogLevel"> (new top-level variable)

```
<xsl:template
match="RecordSetPositionControl|RecordSetRangeControl|TotalNumberOf
RecordsControl">
<xsl:template match="ButtonControl">
<xsl:template match="LabelControl">
<xsl:template match="HTMLControl">
<xsl:template match="ImageControl">
<xsl:template match="DataSetNumbersControl">
<xsl:template name="SetAttributesForTextControl">
<xsl:template name="InputControl">
<xsl:template name="TextControl">
<xsl:template match="InputControl[@type='textarea']">
<xsl:template match="InputControl[@type='custom' or @type='htmlarea' or
@type='static']">
<xsl:template match="InputControl[@type='radio']">
<xsl:template name="InputControlRadio">
<xsl:template match="InputControl[@type='checkbox']">
<xsl:template name="SetCheckboxAttributes">
<xsl:template name="SelectAttributes">
<xsl:template name="InputControlSelectAttributes">
```

Grids.xsl:

Various changes in templates for support of internal web testing:

```
<xsl:template name="GridCellControlRow">
<xsl:template name="GridCell">
```

Strings.js:

Translated message added: NO\_PARENT\_VALUE

Messages.js:

Translated message added: NO\_URE\_MESSAGE

Interface.js:

closePage() function updated

If you have overwritten one or more of these templates in an alternative directory in CustApplet.xml you should adapt these templates in the CustApplet.xml file(s).

#### **112360 WEB DESIGNER 39625**

An image column in a Grid set to read-only mode would not display the image, but the path to the image instead. This has been repaired.

#### **112428 WEB DESIGNER 40170**

The Web Designer function: `getvalueofselectedrecordingridbycolumnid()` is now obsolete. You can use `getValue()` to achieve the same result.

#### **112240 WINDOWS DESIGNER 40151**

A change in the underlying query of a window would, at least temporarily, leave the design tree in an inaccurate state. This has been repaired.

#### **112402 XALAN 40323**

There was a Unicode-16-bit-wide string error in the 3rd party Xalan XSL transforming tool that USoft uses. This error only ever occurred when 16-byte-wide strings with a length between 513 and 1024 characters long were processed. This has been fixed.

#### **112448 XML IMPORT 40242**

USoft primarily interpreted numerical values in XML import as external (formatted) values. Interpretation as conceptual values was attempted as backup only. This behavior was undocumented, and did not match the default of XML Export, which is to export numerical values in the format delivered by the database. From now on the XML import will assume numerical values to be in database format, unless the `UseIOFormats` property has been specified, and formats are provided.

## **Miscellaneous Notes and Bug Fixes for USoft 8.0.2**

Most of the remaining notes include an identification number. These numbers are Prorep IDs. Prorep is the information system that USoft uses internally. If you use these numbers in your communications with USoft, our staff will know exactly what you are referring to.

#### **112401 BATCH 40317**

USoft Batch cache utilization has been optimized, resulting in a performance gain.

#### **112389 LOGIN 40191**

If you attempt to run a user application from repository, i.e. without flat files, and do not supply credentials you will now receive an error message.

#### **111703 PERFORMANCE 39769**

On rare occasions, if there were many complex windows open, opening a new window could have failed due to a lack of OS resources. Unfortunately, after informing the user about this, USoft would crash. This has been repaired.



#### **112246 REPOSITORY MANAGER 39443**

When importing comparison results in a repository, the IO formats of date fields (for example) were not used. This has been fixed: The USoft XML Import file now contains a generated attribute: use-io-formats="yes".

#### **112313 RULES SERVICE**

A number of memory leaks associated with the Rules Service have been fixed.

#### **111365 SQL SERVER 39499**

In a multi-table update statement in SQL Server, a select for update is done with the UPDLOCK hint. SQL Server processes this as a full table lock, which would cause unnecessary waits and or timeouts if another user had locked any statement associated with the target table. This has been improved. The update lock will now bypass records that have been locked by other users. Should the update indeed try to change a record that has been locked by another user, instead of a wait lock and timeout error, you will now see the message: record locked by another user.

#### **112351 WEB APPLICATIONS 40080**

If multiple lookup (dropdown) data sources are used on the same page, and the value of such a column is deleted (and is allowed to be deleted), then sometimes the current value of the other lookup data source is set instead of the empty value. This has been fixed.

#### **112504 WEB APPLICATIONS**

Changed templates, variables, messages and scripts:

USApplet.xml:

```
<xsl:template name="InsertScripts">
  <xsl:template name="InputControl">
    <xsl:template match="InputControl[@type='textarea']">
<xsl:template match="InputControl[@type='custom' or @type='htmlarea' or
  @type='static']">
<xsl:template match="InputControl[@type='radio']">
  <xsl:template match="InputControl[@type='checkbox']">
  <xsl:template name="InputControlSelectAttributes">
```

Grids.xml:

```
<xsl:template name="GridCellControlRow">
```

CreateJavaScript.xml:

```
<xsl:template name="HSVVL">
```

If you have overwritten one or more of these templates in an alternative directory in CustApplet.xml you should adapt these templates in the CustApplet.xml file(s).

## **Miscellaneous Notes and Bug Fixes for USoft 8.0.2A**

Most of the remaining notes include an identification number. These numbers are Prorep IDs. Prorep is the information system that USoft uses internally. If you use these numbers in your communications with USoft, our staff will know exactly what you are referring to.

#### **112579 112569 BATCH 40317 40407**

In previous versions, memory leaked when a constraint was triggered that used SQL functions: UPPER/LOWER or LEN, on a SQL Server database. This has now been fixed.

#### **112586 DEPLOYMENT CONFIGURATION 40457**

The following resources have been moved to the deployment configuration in USoft Authorizer:

- wait for lock
- lock foreign keys

- auto-commit
- lock parent on sequence
- max constraint depth
- update supertype on insert
- show component errors
- show database errors

Setting these resources in usdi/usdiw resource file will no longer work. Also, the corresponding properties in the Windows Designer are no longer available. Deployment configuration is now the only location where these properties can be set.

#### **112577 POST-CLOSE CALLBACK 40245**

If you closed an application while a window was still open, any post-close actions would not execute. This has been repaired.

#### **112574 SETUP 40471**

Using a custom setup it was unclear when the USoft utility to create tables (i.e. creapp.exe) was installed. If you selected only 'USoft Authorizer' in the custom setup for instance, it was not possible to create the Authorizer tables. This ambiguity has been removed by explicitly enabling the checkbox 'USoft Create Table' options in the setup program. When selecting 'USoft Developer' only in the custom setup creapp.exe is also installed, this is the same as in previous versions.

#### **111577 SQL SERVER 39564**

In a multi-table update statement in SQL Server, a select for update is done with the UPDLOCK hint. SQL Server processes this as a full table lock, which would cause unnecessary waits and or timeouts if another user had locked any statement associated with the target table. This has been improved. The update lock will now bypass records that have been locked by other users. Should the update indeed try to change a record that has been locked by another user, instead of a wait lock and timeout error, you will now see the message: record locked by another user.

#### **112578 WINDOWS DESIGNER 40406**

If you had a Binder project with separate logins for repository and application, and the application user was not known by the database, the Windows Designer would open with an error message. If you then tried to open a window from the Info Boxes tab, the application would crash. This has been improved, you will get the message 'Error: Window <xxx> cannot be edited'.

## **Miscellaneous Notes and Bug Fixes for USoft 8.0.2B**

Most of the remaining notes include an identification number. These numbers are Prorrep IDs. Prorrep is the information system that USoft uses internally. If you use these numbers in your communications with USoft, our staff will know exactly what you are referring to.

#### **111535 AUTHORIZER 39639**

In the case of secondary windows generated by default, and opened using the by the Single Record option from the Box menu, if you opened a second instance of that secondary window from a second instance of the same main window, this could have resulted in errors. This has been repaired.

#### **112642 BATCH**

The Disable Rules checkbox, when used with a statement in a USoft Batch SQL task has improved its manner of execution. When restrictions forbid sending the SQL directly to the database, the action deactivateallconstraintchecks is automatically executed and the statement is executed record by record but without constraints. Following execution, constraints are turned on again by automatically executing activateallconstraintchecks.

**112527 BATCH**

The log level of all batch jobs can be controlled using the Batch\_Loglevel deployment configuration setting in the Authorizer. This setting has three possible values, Information, Error, and No Logging. Please note that RunBatch, client server and the rules service each have their own set of deployment configuration settings: these can be found on the corresponding tab in this window. Jobs running under each of these environments respond to the log level setting of the corresponding tab.

**112719 BUTTONS 40565**

In USoft version 7 it was possible to activate a button using the spacebar. This behavior has been reintroduced for USoft 8.

**112575 COUNT 40455**

On databases other than Oracle, when performing a count query on a window in query mode, you would receive error messages if the query statement for the window contained a GROUP BY clause. The same error would occur if USoft performed a count to calibrate a scrollbar. This has been repaired.

**112752 ERROR HANDLING 40584**

On a table that has multiple relationships with a child table with a Delete Rule on Restricted setting, an error message would be generated for every relationship where an attempt was made to delete the parent record. This has been reduced to just one error message.

**112704 POPUP TEXT EDITOR 40560**

There are three options you can use to adjust the number of visible text lines in a popup text editor:

- Adjust the height of the control.
- Adjust the font size of the text.
- Use the "Extra Ascent" or "Extra Descent" settings

The font size and Extra Ascent/Descent settings can be made on the control itself. If you wish to make the setting for multiple controls simultaneously, you should adjust a resource setting in the <install\_dir>\app\USDIW file. For example:

```
*Text*extraDescent:1
```

**112709 POPUP TEXT EDITOR 40563**

The Popup Text Editor did not receive focus correctly after it was opened. This has been fixed.

**112701 SPREADSHEET LOOK 39432**

On read only gridboxes the foreground text color is usually grayed to emphasize that the text is not updatable. If you do not want this type of behavior, perhaps because you think the text becomes less readable, you can use a resource setting in the USDIW file to disable this graying effect:

```
*gridIgnoreReadOnlyColor : True.
```

**112342 WEB APPLICATIONS**

If you used the Search button, or performed an executeQuery action, while a number of manipulations were not yet committed, this could result in problems. These could include child records disappearing and/or manipulations becoming corrupt, requiring a rollback and extra work to redo the manipulations. This has been fixed.

**112509 WEB APPLICATIONS**

On a web page, updating a record and then immediately attempting to delete the

record without a Save Local or Commit action in between would result in an error message and the record was not deleted. This has been fixed.

#### **112637 XML PARSER**

To display web pages created with the Web Designer, you could choose from three XML parsers: the Microsoft XML parser, the XalanJ parser and the Java DOM parser. However, only the Microsoft parser was working correctly. This has now been fixed.

You can choose between parsers by inserting the name of the XML parser as the second-last parameter of the Page Engine constructor call in the .asp/.aspx application file, using one of the following values:

Microsoft = "com.usoft.XMLParser.Microsoft.MicrosoftXMLDOMParser"

XalanJ = "com.usoft.XMLParser.Apache.XalanJXMLDOMParser"

Java DOM = "com.usoft.XMLParser.Javax.JavaxDOMParser"

## **Miscellaneous Notes and Bug Fixes for USoft 8.0.2C**

Most of the remaining notes include an identification number. These numbers are Prorrep IDs. Prorrep is the information system that USoft uses internally. If you use these numbers in your communications with USoft, our staff will know exactly what you are referring to.

#### **112912 BATCH 40533**

Batch jobs triggered from a constraint now run with background authorization.

#### **112741 112742 DEFINER 40439 40484**

In the Definer the update rule for the following relationships has changed to cascading:

Domains /Alt IO formats

Index /Index column

System messages/ System Message parameters

The last of these facilitates easier changes to user defined messages. In addition, the System Message window now has the translations added as related window.

#### **112858 LICENSE MANAGER 35162**

From version 7.0.3W and higher USoft supports FlexNet publisher (© 2012 Flexera Software LLC) license software. Using this FlexNet License server it is possible to run the Usoft License Server as a Windows Service on Vista and Windows 2008 and all later Window platforms. This was not the case with the previous versions of the FlexNet software.

On USoft 7.0/7.1 versions USoft runs the license manager in a compatible mode which means that is possible to run USoft with both old Flex license servers and the new one, and no new license files are needed. The complete use of all the new FlexNet is now implemented in recent USoft 8 versions. For more information about how to install this new License server please contact the USoft support desk.

#### **112703 POST CLOSE CALLBACK 40245**

If you closed an application while a window was still open, any post-close actions would not execute. This has been repaired.

#### **111365 SQL SERVER 39499**

On SQL Server, a select for update in a multi-table update statement is done using the UPDLOCK hint. SQL Server processes this as a full table lock, which would create unnecessary delays and/ or timeouts if another user had locked any statement of the target table. This has been improved. The update lock will now bypass records that

have been locked by other users. Should the update attempt to change a record that has been locked by another user, you will see a message stating that the record is locked by another user, instead of a wait lock and timeout error.

#### **112861 SQL SERVER 40653**

On SQL Server, a select for update statement with an EXISTS clause in the WHERE clause, was often processed as a full table lock, which would result in unnecessary delays and timeout failures when multiple users or batch processes were accessing the same tables. This has been improved, by adapting the statement sent to the RDBMS.

NOTE: This fix replaces an earlier fix (111365) which could have side-effects on the results of parallel-running batch processes.

#### **112743 TEAMWORK 40485**

There is now a relationship between Implementations and Pages and Page Sets.

#### **112709 TEXT EDITOR 40563**

The Popup Editor did not receive (keyboard) focus upon opening. This has been fixed.

#### **112705 112710 TEXT EDITOR 40561 40562**

Previously, the selection color in a Read only Text Editor was the same as its background. To see a difference between selection and background another selection color was set. A number of properties have been added to tune the behavior of the text editor. These are:

- Wrap Mode
- Foreground Color Selection
- Background Color Selection
- Cursor Color
- Cursor Blink Rate
- Cursor Width
- Caret Line Background Color
- Caret Line Visible

These can all be found on Visual tab of the Property Inspector, with the exception of Wrap Mode, which is on the Layout tab.

If you start a popup editor from a text editor field, this field's settings will be propagated to the popup editor. If you start a popup editor from a grid field, the editor will use its own settings.

#### **112737 TEXT FIELDS 40580**

A Wrap Mode property has been added to text fields, to control wrapping behavior. Its Values are None, Word (the default), and Char. The property can be found on the Layout tab of the Property Inspector.

The internal name of the property is wrapMode. You can make use of this name on the application startup command line to influence wrapping behavior across the whole application. For example:

```
-xrm ".*Text.wrapMode: None"
```

Note that if the 'Horizontal Scrollbar' property is set to On, there will be no wrapping.

#### **112827 UPGRADE 40610**

In a specific case, an upgrade from version 7.0 to version 8.0 can fail. This occurs if the SQL statement of a Web Service defined in version 7.0 ended with a semicolon. The check of the Web Services would apparently succeed, but the upgrade failed. Remove the semicolon from the version 7 SQL statement before upgrading. In version 8.0 this Web Service check has been fixed and the user is prevented from

finishing the SQL statement with a semicolon.

#### 112633 WEB APPLICATIONS

Changed templates, variables, messages and scripts:

USApplet.xml:

```
<xsl:template match="LinkControl">
<xsl:template match="TreeNodeControl">
<xsl:template match="ImageControl">
<xsl:template name="InputControl">
<xsl:template name="ImageInputControl">
<xsl:template name="InputControlRadio">
```

Grids.xml:

```
<xsl:template name="GridCell">
```

Strings.js:

NULL\_OPTION message

If you have overwritten one or more of these templates in an alternative directory in CustApplet.xml you should adapt these templates in the CustApplet.xml file(s).

### Miscellaneous Notes and Bug Fixes for USoft 8.0.2D

Most of the remaining notes include an identification number. These numbers are Prorep IDs. Prorep is the information system that USoft uses internally. If you use these numbers in your communications with USoft, our staff will know exactly what you are referring to.

#### 112902 RULES SERVICE 40665

Occasionally, a 'Cannot perform malloc' error would occur when the batch scheduler attempted to simultaneously process several batch jobs in an iterated decision. To fix this problem, the memory allocation strategy has been adjusted for strings that are to be concatenated, so that multiple small strings do not immediately require a large amount of memory.

#### 112953 SECONDARY WINDOWS 40682

When starting a dialog using the old-style window-create() syntax from a secondary window that was popped up from another window, you could have experienced a crash as a result of a stack overflow. This has been repaired.

#### 112986 SQL SERVER 40827

The solution **112861 SQL SERVER 40653** in the previous 8.02.C patch caused side-effects (on SQL Server only) for update statements containing multiple EXISTS clauses, and also when the records to be updated contained NULL values in the primary key. This has been repaired.

### Miscellaneous Notes and Bug Fixes for USoft 8.0.2E

Most of the remaining notes include an identification number. These numbers are Prorep IDs. Prorep is the information system that USoft uses internally. If you use these numbers in your communications with USoft, our staff will know exactly what you are referring to.

#### 112948 USXSL COMPONENT

The SetXSL method of the USXSL component is used to pre-parse an XSL and store it in memory with an alias. The alias can then later be used in the USXSL.Apply method, for example. When running under the Rules Service, a parsed XSL using SetXSL in one engine could not be used in another engine: each engine had to perform their own SetXSL. Now a new method is available: SetGlobalXSL. The method pre-parses XSL just like the SetXSL method, but the pre-parsed XSL is

immediately available in all engines. Parameters for the SetGlobalXSL method are the same as for the SetXSL method and the alias can be used in the apply and applytofile methods.

#### 112881 WEB APPLICATIONS

Changed templates, variables, messages and scripts:

USApplet.xsl:

```
<xsl:template match="FrameControl">
<xsl:template match="ImageControl">
<xsl:template match="InputControl"> (various)
<xsl:template name="ImageInputControl">
<xsl:template name="TextControl">
```

Grids.xsl:

```
<xsl:template name="GridCellControlRow">
```

CreateJavaScript.xsl:

```
<xsl:template name="HSVL">
```

If you have overwritten one or more of these templates in an alternative directory in CustApplet.xsl you should adapt these templates in the CustApplet.xsl file(s).

#### 112965 WEB SERVICE PROVIDER 40684

The XML that the web service provider creates for its input parameters did not contain all the necessary namespaces. This has been fixed.

## Miscellaneous Notes and Bug Fixes for USoft 8.0.2F

Most of the remaining notes include an identification number. These numbers are Prorrep IDs. Prorrep is the information system that USoft uses internally. If you use these numbers in your communications with USoft, our staff will know exactly what you are referring to.

#### 113067 BATCH 40840

Following an import task, USoft Batch now adds .suc or .err extensions to the complete original filename when creating status files. For example:

**file1.exp** now results in **file1.exp.suc**

#### 113122 BATCH 40908

If you used the disable rules feature in a SQL task, manually disabled rules would be activated. This has been is fixed.

#### 112843 BATCH

Batch log files have been enhanced. If you set the log level in your Deployment Configuration to Information, all job/task settings and file formats of external sets are now added to the log file.

#### 113069 LICENSE MANAGEMENT 40853

USoft has upgraded its license system to the latest version of FLEXLM, which is named FLEXNET.

On the license SERVER, two ports must be opened to allow clients to communicate with the server. On the client computer no ports need to be opened.

Flexnet allows you to specify the ports using the following (pre-existing) line in the license file:

**SERVER <server-name> ANY TCP:<port-nr>**

Change the line

**DAEMON usoft <path-to-usoft-exe>**

to

**VENDOR usoft <path-to-usoft-exe> PORT=<port-nr>**

This change can be made using a text editor and will not corrupt the license file.

**NOTE:** You only need to change the license file on the server.

#### **113071 RULES ENGINE 40864**

USoft locking behavior on a record from a table that belongs to a subtype/supertype constellation differs slightly from how a record from a single separate database table is locked. This difference could have caused an incorrect update of a record that is locked in two separate transactions. If two separate transactions wanted to update the same record and one transaction commits its changes before the other transaction is finished, the latter connection was able to update the record with an unexpected value. An example of such a statement may be:

**UPDATE TABLE set COLUMN = COLUMN + 'X' WHERE COLUMN = 'Value'.**

This problem has been fixed.

#### **113029 TLS/SSL**

In some circumstances, a self-signed certificate can be used in place of a certificate that has been verified by a Certificate Issuer. This could be the case in a connection that is required to be encrypted, but that will never be accessed by a browser. A direct connection via JDBC or ODBC could be an example of this. As the self-signed certificate will not be accessed by a browser, error messages warning that the certificate is not verified will not be displayed. The connection however will make use of TLS (Transport Layer Security) which is based upon SSL (Secure Sockets Layer) technology and encrypt data because a signed certificate exists, even though it was not signed by an official Certificate Issuer.

A typical tool that can be used to generate self-signed certificates is OpenSSL. This is Open Source software, for which a small donation is requested upon download.

In this patch (8.0.2F), Beta support is available for the use of self-signed certificates made with OpenSSL. Additional "Use TLS" checkboxes have been added to the configuration dialogs of the Rules Service and Remote Rules Service. Refer to your Authorizer help for more details about self-signed certificates and OpenSSL.

##### **Beta Notice**

This release of software and documentation is Beta (pre-release) status. Beta status material is distributed for test and evaluation purposes only. Beta software and documentation have not yet completed the test and quality procedures used for production status material.

For this reason, you may find that the documentation is incomplete, or contains minor errors; ranging from punctuation errors to technical inaccuracies. Beta status software may still contain a number of bugs, some of which may affect functionality. Please be advised that USoft does not warrant beta products, and will not be responsible for any loss, costs or damage incurred due to the use of these products.

##### **\*IMPORTANT**

Under NO circumstances may you use beta status software in a production environment. There are additional restrictions; refer to your beta-test license



agreement for more details.

Beta software and documentation may only be used by registered beta-test sites. For more information about how to register as a beta-test site, contact your local USoft distributor.

### 113053 USXSL COMPONENT

If you performed a transformation using the USoft USXSL component (based on The Apache Xalan Project) with a syntactically incorrect XSLT document, this could have resulted in a crash. This has been fixed

### 112962 WEB APPLICATIONS

The 'Type' property of InputControl and GridCellControl now has a new option: 'autocomplete'. In combination with a Lookup Data Source, a field of this type will exhibit auto completion behavior, i.e. it shows the values that match the first letter(s) of the value that has been typed in.

In order to use this property correctly, the same rules that apply to regular Text or Dropdown Lookup input controls apply to 'autocomplete' input controls as well.

**Note:** Internet Explorer may display an error message when using Compatibility Mode.

**Note:** There are still a few (minor) open issues regarding auto completion (e.g. in combination with a lookup page button), but these will be fixed in a later patch.

### 112927 WEB APPLICATIONS

Changed and added templates, variables, messages and scripts:

USApplet.xsl:

```
<xsl:template match="LinkControl">
  <xsl:template
match="RecordSetPositionControlRecordSetRangeControl
TotalNumberOfRecordsControl">
  <xsl:template match="ButtonControl">
  <xsl:template match="LabelControl">
  <xsl:template match="HTMLControl">
  <xsl:template match="ImageControl">
  <xsl:template match="DataSetNumbersControl">
  <xsl:template name="SetAttributesForTextControl">
  <xsl:template name="InputControl">
  <xsl:template name="ImageInputControl">
  <xsl:template name="TextControl">
  <xsl:template match="InputControl[@type='textarea']">
  <xsl:template match="InputControl[@type='custom' or
@type='htmlarea' or
@type='static']">
  <xsl:template match="InputControl[@type='radio']">
  <xsl:template name="InputControlRadio">
  <xsl:template match="InputControl[@type='checkbox']">
  <xsl:template name="SetCheckboxAttributes">
  <xsl:template name="SetOptions">
  <xsl:template name="SelectAttributes">
  <xsl:template name="InputControlSelectAttributes">
```

Grids.xsl:

```
<xsl:template name="GridCellControlRow">
<xsl:template name="GridCell">
```

CreateJavaScript.xsl:

```
<xsl:template name="HSV_L">
```

CustScript.js:

setTestRefsForCustomControls(doc) (NEW function!)

If you have overwritten one or more of these templates in an alternative directory in CustApplet.xml you should adapt these templates in the CustApplet.xml file(s).

#### **111539 XML EXPORT**

The XML Export method has been extended with an optional parameter:

**EmptyDocOnZeroRows** (default=No)

When set to Yes, an XML document containing just a root-tag will be returned if the query under the XML export does not retrieve any records.

## **Miscellaneous Notes and Bug Fixes for USoft 8.0.2G**

Most of the remaining notes include an identification number. These numbers are Prorep IDs. Prorep is the information system that USoft uses internally. If you use these numbers in your communications with USoft, our staff will know exactly what you are referring to.

#### **112878 112968 DEFINER**

Several improvements have been made to memory management and query formulations, to reduce memory consumption of tree view queries in general, and the Definer Catalog in particular. This will especially reduce memory requirements when performing a search in the Definer Catalog, which should be noticeable in larger repositories.

The formulation CAST(expr AS datatype) is now supported for all databases.

#### **113182 UPGRADE FROM < 8.0.2F**

IMPORTANT NOTE:

Due to the implementation of the TLS project (see 113029 TLS/SSL in 8.0.2F), USoft Binder files (.USB) created by versions before USoft 8.0.2F can be read by newer versions, but not the other way around. So a Binder file opened and saved by USoft 8.0.2F or later cannot be read by USoft version USoft 8.0.2E or earlier.

#### **113195 SCHEMA VALIDATOR 40951**

In USoft 7 it was possible to create a XSD SchemaValidator RDMI component using the com.usoft.xml.SchemaValidator java class. However, in USoft 8 this class was missing. This has been fixed.

#### **113134 WEB APPLICATIONS**

When querying records with a query condition on a web page, data could appear to be lost when records changed and no longer matched the query condition, and a navigation was performed to the last data set. Moreover, it would appear that no data was left at all (0-0 of 0 records).

This has been almost completely fixed: the data set number control always remains visible, although the last data set may still appear empty following the update (showing 0-0 of X records). The lost record(s) become visible again following a refresh action.

#### **113126 WEB APPLICATIONS**

Arrow keys only worked on the SelectorControl and editable text fields in grids. This has been changed, so that it also works on non-editable text fields. Note: on other

field types the arrow keys do not work, due to lack of browser support.

#### **113173 WEB APPLICATIONS**

On web pages, fields of type 'auto complete' resulted in a javascript error in Internet Explorer when attempting to use this behavior. This has been fixed.

#### **113158 WEB APPLICATIONS**

Performing a Commit or Save Local action from a web page with no manipulations or no unchecked manipulations respectively, would result in an unnecessary round trip to the server. This would consume unnecessary resources. This has been changed: when a Commit or Save Local action would not result in actual processing of a (new) manipulation by the Page Engine, the round trip to the server is no longer executed. Instead, nothing happens at all.

#### **113165 WEB APPLICATIONS**

On web pages, the getRecordCount action is used to properly calculate and display the total number of records for a data set, its range of displayed records, and to control the dataset numbers control. However, for every refresh and executeQuery action, regardless of its context, a COUNT(\*) query was executed with the full WHERE clause of the actual intended query, with the possible result of large performance loss due to unnecessary calculation of that WHERE clause. In some cases, the COUNT(\*) query is actually completely obsolete due to the fact the total number of records could be calculated directly from the query (last data set, all records having been queried, etc).

This has been improved. The getRecordCount action itself is no longer a prominent part of the executeQuery action, but part of getDataSet instead (as a parameter). The effect of this is that the Page Engine can now determine from the actual query itself if a count query is required, and if so execute it. Otherwise, the total number of records is calculated from the query results instead.

The effect of this change is that especially data sources with complex WHERE clauses (including Logical View variants) can be queried faster, because their WHERE clause is no longer analyzed and executed twice, resulting in considerable performance gains in these situations.

#### **113209 WEB APPLICATIONS**

Changed and added templates, variables, messages and scripts:

USApplet.xml:

```
<xsl:template name="SetAttributesForTextControl">
```

Grids.xml:

```
<xsl:template name="GridCell">
```

If you have overwritten one or more of these templates in an alternative directory in CustApplet.xml you should adapt these templates in the CustApplet.xml file(s).

## **Miscellaneous Notes and Bug Fixes for USoft 8.0.2H**

Most of the remaining notes include an identification number. These numbers are Prorep IDs. Prorep is the information system that USoft uses internally. If you use these numbers in your communications with USoft, our staff will know exactly what you are referring to.

#### **112694 DEFINER 40544**

In the 'Database' field of the 'Table Generator Setting' dialog you could previously only enter a string of up to 30 characters. This has been changed to 120 characters.

#### **113259 PAGE ENGINE 40993**

There were several issues on web pages that were linked to each other by NavigateToRelated actions, and used data sources that were linked using something other than their own primary key (although still having unique values). This would especially cause problems when there were manipulations on the linked data sources on the previous page(s). This has been fixed.

#### **113221 WEB APPLICATIONS 40999**

On a web page, the query condition was sometimes ignored after a commit action followed by a refresh or executeQuery action. This has been fixed.

#### **113063 WEB APPLICATIONS**

When using autocompletion or select dropdown field types on a column of the main data source that has the 'Lookup page' property set, a lookup navigation control is produced next to the input control. However, in the case of these two field types, the data displayed in the select dropdown or autocompletion input controls is wrong (or even not displayed at all), because these two input controls are designed to work with a Lookup Data Source, rather than directly on the main data source.

For this reason, a Developer Warning message will be displayed when opening such a page, if a developer should build such a solution.

In addition: It may apparently look 'better' to be able to have autocomplete with a working lookup button as a solution. However, the way it would be implemented by standard means, i.e. using the column of the real data source on the input control, so that the lookup button is automatically added, it would not work properly, because normally you want to display (auto-complete) data from the lookup data source. The autocomplete and dropdown input types are designed to work with 'Lookup Data Sources' only.

Therefore, if the developer wants to have autocomplete with a working lookup button as a solution, he or she would have to develop a Lookup page, and set the value manually afterwards.

#### **113159 WEB APPLICATIONS**

It was only possible to load a jQuery theme named local from a local web publication, even if it had another name. This has been changed; if you now set the JQueryUIVersion publication property to local, it will load themes with any name locally, if present in the publication.

#### **113224 WEB APPLICATIONS 40969**

The menu pages of a web application did not work correctly if the application was opened with a \$StartPage parameter. Moreover, any \$Action parameters of that URL should not be passed to the menu pages either. Both issues have been fixed.

#### **113263 WEB APPLICATIONS**

Several small web page issues have been fixed:

- On a Related page you could have received the message "You have unsaved data. Will you save first?" if you had made changes on the previous (original) page, but not the Related page itself. This has been fixed.

- Printing a web page or outputting the printed page to PDF could cause a large white rectangular area to appear at the top-left corner of the page. This was most notably observed on IE browsers. This has been fixed.

- When clicking on a Back button of a page to return to the previous page using the closePage action, this could have resulted in an error message, especially if manipulations were involved. This has been fixed.

#### **113252 WEB APPLICATIONS**

Changed and added templates, variables, messages and scripts:

USApplet.xml:

```
<xsl:template match="Combined">
<xsl:template name="InsertCommonVariablesBeforeFiles">
```

Strings.js:

```
Added message 'PREVIEW_NO_RELATE_OR_LOOKUP'
```

If you have overwritten one or more of these templates in an alternative directory in CustApplet.xml you should adapt these templates in the CustApplet.xml file(s).

#### **113308 WEB APPLICATIONS 41011**

If you navigated to a related page and then returned to the previous page, any remaining actions after a checkData or commit action were ignored, unless there were manipulations. This has been fixed.

#### **113310 WEB APPLICATIONS 41021**

When radio buttons were set to 'Updatable'='No' or 'Editable'='No', they were still updatable and thus not disabled on a web page. This has been fixed.

#### **113311 WEB APPLICATIONS 41022**

On a related page, you could have received JavaScript error messages if you had a Virtual Data Source pointing to a different table (i.e. the virtual is of table A, while the real data source is of a completely different table B), where both tables have a different primary key column set. This has been changed; the virtual is now allowed to ('correctly') synchronize, but also shows a warning message to inform the Developer of this undesirable situation, allowing it to be corrected. The JavaScript error message has been removed.

#### **113312 WEB APPLICATIONS 41023**

Performing an executeSQLStatement call on a page with a newly inserted record could have caused the inserted record to turn blank, or even make it disappear. This has been fixed.

#### **113219 WEB DESIGNER HELP 40966**

The getSearchValue placeholder must not refer to variable data sources. If you attempt to do this, you will now receive an appropriate error message. Unfortunately, the help still contained an example (the Period Case) using a variable data source together with getSearch Value. This has been corrected: getValue is now used in the example. Note that in this case, the Task Mode for the column control used in the example must now be set to Edit.

#### **112926 WEB DESIGNER 40913**

The Run option (commonly known as the Preview) that can be accessed from the Design menu in the Web Designer did not work correctly and generated many error messages when it was used. This has been fixed. However if it is used on a Related or Lookup page it still produces an (improved) error message, because it does not work on such pages. When using it on a normal (Info) page to navigate to such a page, it will also generate this error message.

## **Miscellaneous Notes and Bug Fixes for USoft 8.0.2i**

Most of the remaining notes include an identification number. These numbers are Prorep IDs. Prorep is the information system that USoft uses internally. If you use these numbers in your communications with USoft, our staff will know exactly what you are referring to.

#### **113354 BATCH 40986**

Statements that used both parameter sets and database functions like MIN were not stored in the profiler. This has been repaired.

**113066 BATCH 40838**

If you called a job using filename substitution and a NULL user parameter, this could have caused the filename substitution to fail. This has been repaired.

**113326 DEFINER 41039**

The Definer would occasionally crash if a query was performed in the SQL Equivalent field in the Constraints window. This field has now been made non-queryable.

**113408 ESI TABLES 41059**

If you added a default window/page to a set in Windows/Web Designer, and then attempted to change the name in the Definer (by changing the object\_name\_plural in the Tables window) this would be refused.

The same could happen if added the default "Secondary of..." window to a window set. Similarly, if you changed the table name, this could have been refused if a default 'Related MYTABLE' of Lookup MYTABLE' class was added to a window/page set.

Finally, if you were to add a base table to a window set, its name would not be updated in the page list of the set, with the result that it would no longer be displayed in the catalog as a member of the set.

These problems have been corrected.

**113266 FILESEARCHPATH**

USoft no longer overwrites or removes the FileSearchPath entry in its registry key during installation. The FileSearchPath entry in the registry at HKEY\_LOCAL\_MACHINE\SOFTWARE\USoft\USoftxx\FileSearchPath is handled as follows:

- If the reference %I%T%N%S is not part of the FileSearchPath, USoft prefixes this reference internally. This means that flat files and resource files in the USoft/app folder are searched before the customer file search path is searched.
- If the reference %I%T%N%S IS part of the FileSearchPath, the order in the FileSearchPath is strictly followed when searching.

**113180 LANGUAGE SETTINGS/MODULES 40946**

If you used an explicit language setting in the Binder, USoft would also search for a language file when starting the SQL Definer, which is not intended behavior. This has been repaired.

When starting the SQL Definer in the Windows Designer (e.g. when pressing the ellipsis button on an SQL-type property in the Property Inspector) in a split repository configuration, the SQL Definer would not get access to the correct repository. This has been repaired.

**113396 LOGICAL VIEWS**

In recent USoft 8.0 patches, the parsing of a logical view that contained a UNION ALL could have failed if a numeric or DATE column was paired with a NULL. This has been repaired.

**113377 MODULES 41071**

In an applications consisting of multiple modules, adding a joined column using Windows Designer to a table from a provider module would fail. This has been repaired,

**113380 MODULES 41057**

Synchronizing Internal Interfaces could have failed due to a buffer overrun of the XML component when importing many large interface tables

#### **113101 MNEMONICS 40851**

In Version 7 and earlier, you could specify any character you wanted to use in combination with the ALT key as a mnemonic. This character also did not specifically have to be a letter, a number would also work.

In USoft 8, the letter used in the mnemonic letter must be one of the letters in the prompt for the menu line (preferably its first letter). The letter you type will be underscored in the menu line. Together with the ALT key, this mnemonic will activate the menu option if it is in the toolbar. Without the ALT key, the mnemonic will activate the menu option if the corresponding menu page has already been activated.

If you do not specify a letter to be used as a mnemonic, USoft Developer will allow using the first letter of the first word of the menu line as a mnemonic (but only if that letter is a unique first letter on the menu page).

#### **113395 PRODUCTION 41034**

Every window has a button on its upper left that produces a generic window menu when it is pressed. If the window is maximized, this button is placed to the left of the menu bar. If you then pressed the button, on some Windows versions this could have caused the application to crash. This has been repaired.

#### **113339 SPREADSHEET LOOK 41040**

In spreadsheet displays where a grid\_image column is specified using an Extra Query, a crash could have resulted if the user clicked just below the lowest grid button on the left hand side. This has been repaired.

#### **113353 SQL SERVER 41024**

On SQL Server, a corrective constraint triggered by a data change may have used a full table scan to collect the target records. This could have caused an unnecessary lock when another instance held an update lock on any other record of the same table. This has been fixed.

#### **112085 TEAMWORK 40109**

When performing a TeamWork import, where some imported components are in a different Business Area to the components referring to them (like domains and table columns), this would lead to partial failure of the import if the latter Business Area was imported first. This has been fixed.

#### **113218 TIMER 40942**

When there was inappropriate use of application timers (a second timer started on the same application) this was not handled correctly: a second record was inserted in T\_APP\_TIME, causing failure of the timer constraints. This has been improved: the second timer will now be aborted (with a message).

#### **113248 UPGRADE 40968**

The upgrade of Web Menu entries to Version 8.0 did not always work correctly in cases where there were spaces in the menu line specification, for example: url (myUrl). This has been fixed.

#### **112761 WEB APPLICATIONS**

In previous versions, a database failure would result in the username being revealed in an error message. This has been fixed.

#### **113321 WEB APPLICATIONS 41036**

In a web application that used replicated column controls, the fields with type 'htmlarea' and 'static' were not filled. This has been fixed.

#### **112998 WEB APPLICATIONS**

When running USoft Web Application under IIS with .NET version 4.0 you must use the following line in Web.config:

```
<httpRuntime requestValidationMode="2.0" />
```

#### **113346 WEB APPLICATIONS**

Setting certain textual table column properties to contain double quotes could have caused problems in a web application (JavaScript errors) when used there. This has been fixed.

#### **113277 WEB APPLICATIONS**

If you changed the Search condition on a web application, it influenced the result of the next data set being retrieved, even if the Search button was not pressed. This has been changed: when an executeQuery action (which is the default action of the Search button) is executed, only then are the Search conditions refreshed. Otherwise the existing Search condition is used, regardless of any changes that have been made to them.

#### **113375 WEB APPLICATIONS**

Changed and added templates, variables, messages and scripts:

USApplet.xml:

```
<xsl:template match="Combined">
```

If you have overwritten one or more of these templates in an alternative directory in CustApplet.xml you should adapt these templates in the CustApplet.xml file(s).

#### **113418 WEB APPLICATIONS**

When the Publication configuration setting JQueryUIVersion is set to 'local', all jQuery themes must be searched for locally. However, if the 'JQueryUITheme' setting is also set to 'local', it must search for a theme called 'local' (which \*must\* be added to an Alternative folder by the developer!), but if it is set to 'base' it must use the 'base' theme that is already delivered.

In previous versions however, the JQueryUITheme setting 'local' used everything from the local 'base' theme. Developers should change their setting of JQueryUITheme to 'base' if they use the JQueryUIVersion setting 'local' and still want to continue to use the 'base' theme if they have set the JQueryCompatibility property value to 'usoft8'.

#### **113348 XML IMPORT 41051**

XML.IMPORT method did not handle IO format settings correctly. This has been improved.

## **Known Problems and Workarounds**

Most of the remaining known problems and workarounds include an identification number. These numbers are Prorep IDs. Prorep is the information system that USoft uses internally. If you use these numbers in your communications with USoft, our staff will know exactly what you are referring to.

#### **102683 AUTHORIZER**

The Upgrade process from 7.0 to 8.0 removes the USBATCH Application and table rights. Authorization on Batch tables must be reapplied manually.

#### **106203 AUTHORIZATION**

If you run an application from database, and you do not have complete authorization



on all dictionary tables, a crash can occur.

**105176 BATCH**

The Batch log file is not always properly updated after logging. This can cause mysterious messages in the logfile.

**104546 BENCHMARK**

When running a BenchMark test that sets properties, the properties are not directly shown in the property inspector.

**105247 BENCHMARK**

Playing a BenchMark recording of an update of application rights does not work. The window is created outside USoft by BenchMark but following creation it cannot be found.

**106474 BENCHMARK**

Using BenchMark in an application called TESTER can give undetermined behavior.

**99470 BENCHMARK**

In the Profiler, (SQL) statements from batch jobs are booked under the 'Interface' source. This makes it difficult trace the source to the job/task.

**106479 BUTTON TYPE**

When changing a button into 'Button Type' = 'Command Link', the control is initially displayed empty. After saving, closing, and reopening the control is displayed normally.

**104913 CANCEL QUERY**

Cancel query functionality does not currently exist.

**107208 CROSS REFERENCES**

If a parameter of an RDMI method is deleted, objects (for example, constraints) are not automatically set to not correct.

**107089 DEFINER**

The create new/updated tables utility does not notice if there are small changes in an additional index, like the order of the columns or the uniqueness.

**103170 DEFINER**

The Business Objects window has some design issues when resizing windows.

**102885 FIELD COLOR**

It is not possible to change to read-only color of fields. This means that if you specify, using the Definer or the Windows Designer, that a column or a field based on that column is not updatable or where input is not allowed, it is not possible to change the background color of affected fields.

**104873 IO FORMATS**

When importing records using 'INVOKE xml.import with', alternative IO-formats are ignored. Only the presentation format is used.

**98002 MENUS**

The 'PAGE' parameter of menubar-mark-item() and menubar-set-item() is not used. This means that it is not possible to address menu items with prompts that are used in several places in the menu.

**106301 MODULES**

If an interface implementation is missing for a decision interface, you don't receive an error message when the application is started.

**97484 MYSQL**

With MySQL (beta support via ODBC), you cannot use the 'Tools/Load Definer User groups' menu item in the Authorizer.

#### **100980 OPEN CLIENT**

USoft 8 does not currently support the OpenClient (Sybase) driver in combination with Unicode.

#### **100770 OUTER JOINS**

The result of an outer join between a table and a subtype is different to the result of an outer join between the same table and the supertype, even if the rows returned by the subtype are the same as the rows returned by the supertype.

#### **97405 PRODUCTION**

The application generates a 'Record changed by another user' message when data is manipulated on a subtype table that has no rights.

#### **107965 RECORD NUMBER**

It is not possible to identify a record in an info window by record number. This makes it harder to identify a record following a re-query because the record might be on another row.

#### **108461 REPOSITORY MANAGER**

When comparing repositories with USoft Repository Manager, you can generate an Import XML document that can be used to import all differences in a repository. For all detailed information, please refer to the Repository Manager Guide or Help.

However, there are some important notes about this process:

- In theory, importing differences in a repository can only be based on an all-or-nothing comparison between two repositories, because of the nature of a repository with interrelated tables. A simple example to illustrate this is that if you decide to compare columns (without tables), the import of a new column will not succeed since the tables were not compared.
- This is why importing differences in a repository is not supported in an automated way: Executing these manipulations manually is at your own risk.
- Currently, inserts in the ESI (external) repository are not generated in the Import XML document.

#### **108462 REPOSITORY MANAGER ON APACHE DERBY**

USoft Repository Manager is a separate set of repository tables that can be used as a stand-alone application, or added to an existing repository. Three possibilities how to do this are described in (Repository Manager) Help topic: "How to Create the USoft Repository Manager Repository".

However, the third option mentioned in this help topic (using USoft Repository Manager as a stand-alone application on a Derby database) does not provide support of all Repository Manager features. Therefore, to enjoy full support of all Repository Manager features, you are currently advised to run USoft Repository Manager on another database than Derby.

#### **104959 RULES ENGINE**

If the repository tables and the application tables for your application reside in a different user/database, Create Tables does not work.

#### **107786 RULES SERVICE**

The Rules Service does not refresh authorization information correctly.

#### **98420 RULES ENGINE**

If a client/server application is started with an invalid user name and/or password, and the correct user name is then entered in the login dialog, the application shows a message that 'No user groups registered for application "<WRONG\_USER>".

#### 100141 RULES ENGINE

An update constraint containing an outer join in the select clause does not fire on delete. For example:

```
UPDATE ZF_OFF_CONTRACT C
SET voorletters =
  (SELECT V.voorletters
   FROM ZF_OFF_VERZEKERINGNEMER V
   WHERE V.offertenummer (+) = C.offertenummer
  )
```

#### 100550 RULES ENGINE

The use of select RulesEngine.SetUser is not possible on SQL Server. The reason for this is that 'SetUser' is a reserved word on SQL Server. To work around this problem use: INVOKE RulesEngine.SetUser instead.

#### 98375 SPREADSHEET LOOK

Auto-tab functionality is not currently supported in spreadsheet look.

#### 108387 SPREADSHEET LOOK

Newly entered data in a spreadsheet field is lost when resizing the spreadsheet.

#### 102830 SPREADSHEET LOOK

It is not possible to change the font of a spreadsheet window from within the Windows Designer.

#### SYBASE

Sybase is not supported in this version.

#### 96205 SYSTEMDIR

When the environment variable SystemDir has been set, loading the Definer user groups can result in an error:

```
'cannot find file "<path from the SystemDir>/dat/t_autpriv.dat" '
```

#### 103711 TREE VIEW

Tree node order not is always displayed correctly in the Windows Designer. At runtime it can be incorrect when using ORDER BY.

#### 101900 UNICODE

When running against a non-UTF8 Oracle 10 database, the concatenation of a non-Unicode field to a Unicode field may result in the loss of the non-ASCII characters. To solve this problem, developers are advised to use the functions TO\_NCHAR() and/or TO\_NCLOB(). For example:

```
select clobfield || nvarcharfield from my_table; /* This can cause loss of
unicode characters */
select to_nclob(clobfield) || nvarcharfield from my_table; /* This solves the
problem.*/
```

#### 108460 UPGRADE

Following an upgrade from 7.0/7.1 to USoft 8, an application or Window Designer may generate a message complaining about an entry 'Pick List' in the menu class 'STD\_VIEW'.

#### 112191 UPGRADE

Upgrading USoft 7 to USoft 8 can result in a problem on Oracle versions 10 or higher. This situation occurs when a domain constraint has been specified for which the condition has been left empty. This null CLOB field is incorrectly converted to an empty CLOB field that is no longer a null field. The workaround is to supply a condition for the domain constraint, for example: 1=1. It is not certain if this situation

also happens on other domains for which null CLOBS have been specified.

#### **98560 WEB APPLICATIONS**

In a Web Designer application, if you have a table with a column based on a DATE domain with no IO Format and default values \$\$CURRENTDATE\$\$, a query on this table displays the DATE column with the DEFAULT\_DATE\_FORMAT as defined in the Rules Engine parameter, but a new record will not be displayed with this format.

#### **106231 WEB APPLICATIONS**

Calls to sub-module pages in DefaultMenu.xml generate an unnecessary error message.

#### **107315 WEB DESIGNER**

It is not possible to use a static relationship between data sources in a tree view controls. The relationships must be dynamic.

#### **107837 WEB DESIGNER**

No message is generated when publication cannot overwrite files in the publication directory because of access right issues.

#### **98700 WEB DESIGNER**

A date field cannot function correctly without an IO format. The Web Designer does not warn you about this.

#### **98187 WEB DESIGNER**

Subclasses of pages based on views that have become incorrect (the view is not checked) stay visible on the 'Page Sets' tab of the catalog.

#### **107351 WEB DESIGNER**

If you have a field in a Relate object of a data source used for a TreeControl object that makes use of an IO format, this may result in child nodes in the Tree View not being displayed, even if they exist.

A way to work around this issue, is to add a new TableColumn to this data source (and the data source it relates to), that removes the IO format of this field, and then alter the Relate control to use this new TableColumn control instead of the field with the IO format. This TableColumn control should have the 'Output Expression' property set to something like:

**USFormat.CharRemoveIOFormat(<FIELD NAME>, '<IO FORMAT>')**

Where <FIELD NAME> is the actual name of the field, and <IO FORMAT> the IO format of that specific field. The above example however is used for string and character based fields; see the documentation of USFormat on how to treat fields of other types.

If more than one field must be treated, the above solution can be repeated for these fields.

#### **108478 WEB DESIGNER**

Selection of buttons in a design view in Web Designer disappears if the window is resized.

#### **99547 WEB MENUS**

The use of 'Table Name' in 'Menu Objects' is not supported for Web menus.

#### **96019 WEB SERVICES**

When special characters (like ë and â) are used in the name of a Web Service or in the name of a method of a Web Service, the generated WSDL file will not be valid.

## 98165 WEB SERVICES

When importing a Web Service component using a UDDI registry, and the component does not have the WSDL column filled in, the Web Service component is imported incorrectly.

## 97891 WEB SERVICES

When importing Web Services providers in the Authorizer, descriptions of the methods of the Web Services are not imported.

# Third-Party License Notices

The USoft product set includes code licensed from RSA Security, Inc. Some portions licensed from IBM are available at <http://oss.software.ibm.com/icu4j/>.

**Important Note: The following licenses only apply to those portions of software derived from code licensed by the license holders concerned. These software components are listed below:**

### Apache Java:

XML Parser Xerces-J:

<usoft install dir>\java\redist\apache\xercesImpl.jar

<usoft install dir>\java\redist\apache\xml-apis.jar

XSLT Processor Xalan-J:

<usoft install dir>\java\redist\apache\xalan.jar

### Apache C/C++:

XML Parser Xerces-C:

<usoft install dir>\bin\xerces-c\_2\_5\_0.dll

XSLT Processor Xalan-C:

<usoft install dir>\bin\Xalan-C\_1\_8.dll

<usoft install dir>\bin\XalanMessages\_1\_8.dll

### Apache FOP (Formatting Objects Processor)

Apache FOP comes with a number of libraries all of which are currently sourced from within the Apache Software Foundation. These libraries are all licensed under the Apache License. There is one exception, "xml-apis.jar" which contains code licensed by the W3C (World Wide Web Consortium <http://www.w3.org/>).

### The Boost regular expression engine

### APACHE License Notice:

This product includes software developed by The Apache Software Foundation (<http://www.apache.org/>).

Portions of this software were developed at the National Center for Supercomputing Applications (NCSA) at the University of Illinois at Urbana-Champaign.

This software contains code derived from the RSA Data Security Inc. MD5 Message-Digest Algorithm, including various modifications by Spyglass Inc., Carnegie Mellon University, and Bell Communications Research, Inc (Bellcore).

Regular expression support is provided by the PCRE library package, which is open source software, written by Philip Hazel, and copyright by the University of Cambridge, England. The original software is available from <ftp://ftp.csx.cam.ac.uk/pub/software/programming/pcre/>

The Apache license can be seen in <usoft install dir>\java\redist\apache or at <http://www.apache.org/licenses/LICENSE-2.0>.

### BOOST Software License Version 1.0

Boost Software License - Version 1.0 - August 17th, 2003

Permission is hereby granted, free of charge, to any person or organization obtaining a copy of the software and accompanying documentation covered by this license (the "Software") to use, reproduce, display, distribute, execute, and transmit the Software, and to prepare derivative works of the Software, and to permit third-parties to whom the Software is furnished to do so, all subject to the following:

The copyright notices in the Software and this entire statement, including the above license grant, this restriction and the following disclaimer, must be included in all copies of the Software, in whole or in part, and all derivative works of the Software, unless such copies or derivative works are solely in the form of machine-executable object code generated by a source language processor.

THE SOFTWARE IS PROVIDED "AS IS", WITHOUT WARRANTY OF ANY KIND, EXPRESS OR IMPLIED, INCLUDING BUT NOT LIMITED TO THE WARRANTIES OF MERCHANTABILITY, FITNESS FOR A PARTICULAR PURPOSE, TITLE AND NON-INFRINGEMENT. IN NO EVENT SHALL THE COPYRIGHT HOLDERS OR ANYONE DISTRIBUTING THE SOFTWARE BE LIABLE FOR ANY DAMAGES OR OTHER LIABILITY, WHETHER IN CONTRACT, TORT OR OTHERWISE, ARISING FROM, OUT OF OR IN CONNECTION WITH THE SOFTWARE OR THE USE OR OTHER DEALINGS IN THE SOFTWARE.

**NOTE:** XML4C consists of the Apache's Xerces-C XML parser, which is distributed under the The Apache Software License, Version 1.1, and International Components for Unicode (ICU), which is distributed under the X License.

#### **ICU License - ICU 1.8.1 and later**

##### **COPYRIGHT AND PERMISSION NOTICE**

Copyright (c) 1995-2004 International Business Machines Corporation and others All rights reserved.

Permission is hereby granted, free of charge, to any person obtaining a copy of this software and associated documentation files (the "Software"), to deal in the Software without restriction, including without limitation the rights to use, copy, modify, merge, publish, distribute, and/or sell copies of the Software, and to permit persons to whom the Software is furnished to do so, provided that the above copyright notice(s) and this permission notice appear in all copies of the Software and that both the above copyright notice(s) and this permission notice appear in supporting documentation.

THE SOFTWARE IS PROVIDED "AS IS", WITHOUT WARRANTY OF ANY KIND, EXPRESS OR IMPLIED, INCLUDING BUT NOT LIMITED TO THE WARRANTIES OF MERCHANTABILITY, FITNESS FOR A PARTICULAR PURPOSE AND NON-INFRINGEMENT OF THIRD PARTY RIGHTS. IN NO EVENT SHALL THE COPYRIGHT HOLDER OR HOLDERS INCLUDED IN THIS NOTICE BE LIABLE FOR ANY CLAIM, OR ANY SPECIAL INDIRECT OR CONSEQUENTIAL DAMAGES, OR ANY DAMAGES WHATSOEVER RESULTING FROM LOSS OF USE, DATA OR PROFITS, WHETHER IN AN ACTION OF CONTRACT, NEGLIGENCE OR OTHER TORTIOUS ACTION, ARISING OUT OF OR IN CONNECTION WITH THE USE OR PERFORMANCE OF THIS SOFTWARE.

Except as contained in this notice, the name of a copyright holder shall not be used in advertising or otherwise to promote the sale, use or other dealings in this Software without prior written authorization of the copyright holder.

#### **Software License Agreement (BSD License) Yahoo YUI**

**Copyright (c) 2011, Yahoo! Inc.  
All rights reserved.**

Redistribution and use of this software in source and binary forms, with or without modification, are permitted provided that the following conditions are met:

- Redistributions of source code must retain the above copyright notice, this list of conditions and the following disclaimer.
- Redistributions in binary form must reproduce the above copyright notice, this list of conditions and the following disclaimer in the documentation and/or other materials provided with the distribution.
- Neither the name of Yahoo! Inc. nor the names of its contributors may be used to endorse or promote products derived from this software without specific prior written permission of Yahoo! Inc.

THIS SOFTWARE IS PROVIDED BY THE COPYRIGHT HOLDERS AND CONTRIBUTORS "AS IS" AND ANY EXPRESS OR IMPLIED WARRANTIES, INCLUDING, BUT NOT LIMITED TO, THE IMPLIED WARRANTIES OF MERCHANTABILITY AND FITNESS FOR A PARTICULAR PURPOSE ARE DISCLAIMED. IN NO EVENT SHALL THE COPYRIGHT OWNER OR CONTRIBUTORS BE LIABLE FOR ANY DIRECT, INDIRECT, INCIDENTAL, SPECIAL, EXEMPLARY, OR CONSEQUENTIAL DAMAGES (INCLUDING, BUT NOT LIMITED TO, PROCUREMENT OF SUBSTITUTE GOODS OR SERVICES; LOSS OF USE, DATA, OR PROFITS; OR BUSINESS INTERRUPTION) HOWEVER CAUSED AND ON ANY THEORY OF LIABILITY, WHETHER IN CONTRACT, STRICT LIABILITY, OR TORT (INCLUDING NEGLIGENCE OR OTHERWISE) ARISING IN ANY WAY OUT OF THE USE OF THIS SOFTWARE, EVEN IF ADVISED OF THE POSSIBILITY OF SUCH DAMAGE.