

Routing Slip
FD-4 (Rev. 10-13-55)

Date 4/8/63

b6
b7C
b7D

To

Director

Buffalo

CENTRAL INTELLIGENCE AGENCY

FILE # 62-7609-31

Att.

SAC

Title

ASAC

Supv.

Agent

SE

CC

Steno

Clerk

ACTION DESIRED

Group Research Inc.

- Acknowledge
- Assign.....Reassign.....
- Bring file
- Call me
- Correct
- Deadline.....
- Deadline passed
- Delinquent
- Discontinue
- Expedite
- File
- For information
- Initial & return
- Leads need attention
- Return with explanation or notation as to action taken.

- Open Case
- Prepare lead cards
- Prepare tickler
- Recharge serials
- Return assignment card
- Return file
- Return serials
- Search and return
- See me
- Send Serials.....
- to
- Submit new charge-out
- Submit report by
- Type

b7D

Attached items newly received from [redacted] forwarded as of possible interest to Bureau. Future items from same publisher will be destroyed.

NOT RECORDED

13 APR 24 1963

REC-38

SAC J. K. PENDER

Office Buffalo

ENCLOSURE ATTACHED

See reverse side

62-108790

NOT RECORDED
110 MAR 10 1965

2 ENCLOSURE

MAR 10 1965

ORIGINAL COPY FILED IN 62-0-63974

Handwritten notes on the left margin:
APR 10 1963
Future items
destroyed

Handwritten notes and scribbles:
6
6
6

He has served on steering committees for its "schools of anti-Communism" around the country and has sponsored television programs of rallies costing up to \$50,000.

Robert H. W. Welch Jr., founder of the Birch Society, has praised the Schwarz organization for doing "a superb job" of anti-Communist "education."

Schick Ads Cited

Last fall, Schick took large advertisements in major newspapers across the country to present a Schwarz message saying that both China and the existence "as a likely method for destroying America."

The advertisements solicited orders for a book that would outline to any citizen of the United States "the Communist threat to my American heritage."

It also praised the ultraconservative Cardinal Mindszenty Foundation of St. Louis, often described as a Roman Catholic offshoot of the Protestant-led Christian Anti-Communism League.

Mr. Frawley has given the foundation as much as \$10,000 at a time. Last year he and Father Richard Ginder, former member of the Birch Society's national council, received "Paul Revere" awards from the foundation.

John Fred Schlafly Jr., a Schwarz backer, serves on the board of directors of both the foundation and Eversharp. His wife, Phyllis, is research director of the foundation and author of the right-wing paperback "A Choice Not an Echo," which has been given credit for helping to bring the Republican Presidential nomination to Mr. Goldwater last year.

Mr. Frawley regularly supports right-wing publications by advertising in them. For example the qualities of Schick razors are explained in many issues of *The Wanderer*, which

is published in St. Paul, and in William S. Buckley's *National Review*.

The Los Angeles industrialist was a member of the Committee for the Monroe Doctrine, organized in 1963 by a former Communist, Marvin Liebman of New York, to protest the "dangerous concessions being offered by President Kennedy to Khrushchev concerning the Cuban situation."

He has contributed to Americans for Constitutional Action, whose scorecard on the relative conservatism of Congressmen was used by then Maj. Gen. Edwin A. Walker in his "Pro-Blue" troop indoctrination program. The right-wing Americanism Educational League gave Mr. Frawley its "American of the Year" award in 1963.

Last month, Schick sponsored an hour-long color telecast of "Freedom Foundation's first annual patriotic ball" in Beverly Hills. Five nights a week since last Sept. 28, radio listeners throughout the country have been offered a five-minute program called "Washington Report."

Company Pays Cost

The program, now on 900 stations, is produced by the American Security Council. Schick pays the production costs of \$20,000 a month. The program is scheduled, for the time being, to continue indefinitely.

One of the "Washington Report" programs heard here this week was an attack by former Representative Walter H. Judd of Minnesota on campus teachers and trade with Communists.

The council was formed a decade ago to serve industry by screening prospective employees for patriotism and by keeping members informed of cold war developments.

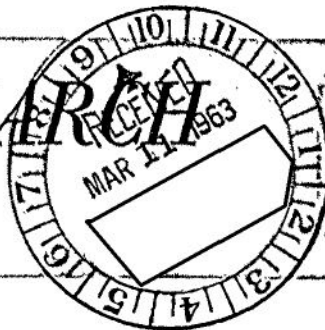
in right-wing radio programs, Facts Forum.

Joe Crail is president of the Coast Federal Savings and Loan Association here, which operates a Free Enterprise Bureau budgeted at a quarter of a million dollars a year. Its purpose is "to preserve a climate of economic opinion favorable to Americanism."

Patrick Frawley contributes to the right-wing movement in many ways. He told the grand jury he had instructed Mr. Ferguson, in his speeches, to "stick to the approach made by Dr. Fred Schwarz."

Mr. Frawley has given Dr. Schwarz's Christian Anti-Communist Crusade, which has headquarters in Long Beach, Calif., up to \$5,000 at a time.

GROUP RESEARCH REPORT



b7D

Vol. 2, No. 4

February 28, 1963

Freedoms Foundation rewards patriots and right-wingers

The fourteenth annual bundle of awards from Freedoms Foundation at Valley Forge, Pa., held on George Washington's birthday and a few miles from his famous winter quarters, included compliments for right-wingers, as well as hundreds of medals for a flow of patriotic enterprises.

Since 1949, Freedoms Foundation has bestowed red, white and blue citations on more than 12,000 individuals, companies, organizations and communities. This year's award booklet ran 50 pages, and the bestowing ceremony included about 100 men brought from the Naval Air Basic Training Command at Pensacola, Florida.

The top award went in absentia to Walt Disney, "Ambassador of Freedom for the U. S. A.," and the narration of the program was done in person by Raymond Burr, television's "Perry Mason."

Among those who travelled several thousand miles to receive the next highest honor -- Special Freedom Leadership Awards -- was Dr. Walter Kerr, of Tyler, Texas, leader of the Youth Crusade for God and Freedom. Last year's gigantic rally of Kerr's Crusade was co-chaired by E. B. Germany, President of the Lone Star Steel Co., an Endorser of the Manion Forum, a fund-raiser for Americans for Constitutional Action, a Director of the National Right to Work Committee, and a public opponent of creating the Disarmament Agency. Also there was George Todt, columnist for the Hearst paper in Los Angeles, whose writings were often put in the Congressional Record by former Representative Rousselot (R-Calif), a John Birch leader. Another such award was made in absentia to Arch N. Booth, Executive Vice President of the U. S. Chamber of Commerce.

The platform was graced by three retired admirals: Arleigh Burke and Arthur Radford, both of whom are trustees of the Foundation, and Felix Stump, Chief Executive Officer of the Foundation. Dr. Kenneth Wells, President of the Foundation since its beginning, presided all day. The organization was founded by Wells, advertising man Don Belding of Los Angeles, and Edward F. Hutton, the late New York financier who contributed heavily to right-wing movements.

-13-

422 Bond Building, 1404 New York Ave., N. W., Wash. 5, D. C.

Group Research, Inc. - 220 Pennsylvania Avenue, S. E., Washington 3, D. C.

Birchers move in on California GOP

John Birch Society members and supporters have taken over control of the California Young Republican Club and came within a few contested votes of doing the same in the adult GOP in two recent actions which got wide publicity.

On February 18, Robert Gaston, who claimed backing of the Birchers, was elected President of the California Young Republicans and carried nine of eleven on his slate with him. While denying that he was a member of the Society, Gaston conceded substantial support from John Rousselot, the former Congressman who now works for the right-wing group.

A week later, at Anaheim, the California Republican Assembly elected William Nelligan, a union man, president of the volunteer organization, over Harry Waddell, a retired Navy commander who welcomed Birch support. The vote of 273 to 212 caused Birch forces to point out that 71 votes more than the number authorized had been cast, but no recount was allowed.

One of Waddell's unsuccessful backers was Murray Chotiner, former political manager for Richard M. Nixon, while a leader of the victorious moderate faction was Fred Hall, transplanted former Governor of Kansas, who hailed the vote as a massive defeat for the John Birch Society.

Hargis & Walker ride together

The biggest news out of this year's meeting of Billy James Hargis's Christian Crusade, at Tulsa, was the schedule of five weeks of "Midnight Rides" which will take Hargis and ex-general Edwin A. Walker into 27 major cities "to alert the American public to the enemy within and without."

In a report to his faithful, Hargis said that the anti-Communist movement had lost momentum, chiefly because it is low on money. He said that the Crusade raised \$800,000 in 1961 but suffered a \$40,000 drop in 1962 and that he and the staff took a 25% salary cut last quarter. The work force was also cut in number from 65 to 35, he said. (St. Louis Post-Dispatch 2/13/63)

Enrollment at this year's session -- 178 people from 14 states -- was about the same as last year. One of the main speakers was Dr. George D. Hess, of Bunker Hill, Ill., past President of the Association of American Physicians and Surgeons, an extreme right-wing pressure group. Dr. Hess, like Hargis, is a leader also of the John Birch Society.

Incidentally, Hargis has announced a new membership drive under the title of "The Christ-Centered Americanism Campaign," set at \$10 each or \$1,000 for a life membership. Some observers of the right wing have felt that his Crusade would not last as long as the John Birch Society, say, because it lacks a membership base.

General's order includes civilians

Maj. Gen. Ralph Mace, commander of the Army's Fort Sam Houston, in Texas, has ordered both soldiers and civilians to stand at attention for the daily flag ceremony called "retreat." The Associated Press quoted the general as saying that even a civilian driving by at retreat time must stop, get out and stand at attention.

Two books on extreme groups

The Ku Klux Klan in American Politics, by Arnold S. Rice, has been published by Public Affairs Press in Washington. (150 pages with index, \$3.25) The book reviewer for the Washington Star, Donald Mintz, points out that the author is an opponent of the Klan but says that his book "is the very model of careful scholarship."

The Extremists, by Mark Sherwin, late News Editor of the New York Post, has been published by St. Martin's Press in New York City. (242 pages with index, \$5.00) It includes chapters on major groups in the anti-communism crusade as well as chapters on White Citizens Councils, American Nazi Party and Black Muslims. Journalistic in style, the book appears to be based on documentation.

Bullock's drops suit

The \$4 million defamation and trespass suit by Bullock's stores in Los Angeles against those placing cards in its merchandise to discourage purchase of Communist-made goods has been dropped. The management issued a statement jointly with leaders of the boycott expressing satisfaction with a court order barring distribution of the cards. A company official said it had ordered no more Communist-made goods, but added that it was not "committed for all time" against ordering more. (Wall Street Journal 2/21/63)

PERSONALITIES: Dr. Walter Judd, defeated GOP Congressman from Minnesota, has been made Chairman of the American Afro-Asian Educational Exchange, Inc., one of numerous organizations engineered by Marvin Liebman, New York public relations man and expert on combining liberals with right-wing extremists in public movements. . . . Mrs. Virginia Shackelford, ardent right-wing leader in the Pacific Northwest, has resigned from the John Birch Society with a charge of anti-semitic activity by some fellow members. However, she still agrees with "the fundamental philosophy" of the group. . . . M. Catherine Babcock, of Virginia Beach, Va., operator of a "premier lecture agency for leading conservatives," offers dates for several editors of National Review magazine varying from \$450 plus travel expense for William Buckley to \$250 for some of his colleagues. . . . Congressman Donald C. Bruce (R-Ind) was the subject recently of a St. Louis Post-Dispatch article because of his leadership (after only two years in Congress) in the right wing.

News of organizations

Human Events has entered the fight in state legislatures for passage of three amendments to the U. S. Constitution which would (1) let states amend the Constitution without Congressional action, (2) take the subject of apportionment away from Federal courts, and (3) create a "Court of the Union" to supersede the Supreme Court in Federal-state disputes.

The Freedom University of the Air, one of the most significant new entries in the right-wing race (Vol. 2, page 3), includes the following in a list of its sponsors: Allen-Bradley Co., Falk Corporation, Kimberly-Clark Co., Milwaukee Gas Light Co., National Bank of Commerce of San Antonio, and Wisconsin Public Service Corp. W. Cleon Skousen is head of the "faculty," which includes some of the best-known right-wing extremists.

The American Farm Bureau Federation is complaining about being bracketed by Secretary Freeman with right-wingers, but the organization is using more and more right-wing speakers. Recent speeches sponsored by some state Farm Bureaus include John Birch leaders Tom Anderson and Reed Benson, as well as such rightists as Howard E. Kershner, Editor of Christian Economics; W. Cleon Skousen; Dr. Clifton Ganus, Vice President of Harding College; and Glenn Martz, Editor of Washington News Beat.

The Ku Klux Klan may be revived under the name of "Majority Citizens League" and given "table manners," according to a report in the Greenville (South Carolina) News.

Freedom Documents Foundation, of Beverly Hills, is a fairly new entry in the field of disseminating historic American documents to the public. It is headed by Patrick J. Frawley, Jr., one of Dr. Fred Schwarz's biggest supporters; and its leaders include such right-wingers as Don Belding, Chairman of Freedoms Foundation, and Walter Knott, operator of the famous "berry farm" in California and supporter of numerous extremist groups.

The Congress of Freedom, Inc., has announced its annual meeting for April 4-6 at New Orleans. Among the extremists billed to appear are Dr. Revilo P. Oliver, George S. Montgomery, Jr., Mary D. Cain, Don Bell and Opal Tanner White, long-time aide to Gerald L. K. Smith. The group is also scheduled to hear Austin T. Flett, a Chicago foe of co-ops.

The Legion for the Survival of Freedom, Inc., at McAllen, Texas, has brought out the first issue of American Mercury magazine under its ownership (Vol. 1, No. 2). Former Gen. Edwin A. Walker, its Military Editor, leads off with an attack on the State Department for planning disarmament, and the editors present 40 pages of excerpts from James Jackson Kilpatrick's book, "The Sovereign States," an argument against integration of races. Another 17 pages is used to reprint the discredited attack on the Supreme Court which the Senate Internal Security Subcommittee received in 1958 from SPX Research Associates, a California extremist group.

The one-hour, black and white sound film is narrated by former Congressman Donald Jackson (R-Calif), who was a member of the House Un-American Activities Committee and visited Katanga last summer. A spokesman for the American Coalition of Patriotic Societies said that the film was shown last summer on the West Coast and that 90 prints have been made. Hargis offers them for sale at \$150 or rent at \$25.

Right-wing coordinators
set meeting

Edward Hunter, Chairman of the Anti-Communist Liaison, has called a two-day meeting in Washington, April 26 and 27, to discuss the question: Where are we heading? This is the group which Dr. Billy James Hargis appointed last year to coordinate the right-wing groups. Hunter is the ex-reporter who claims to have coined the phrase "brain-washing" and now devotes his time to anti-communism.

Bryton Barron, former State Department and John Birch Society official, is chairman of the program committee. Panels will be held on news manipulation, money, State Department aims and the role of Congress.

Goldwater fans get more active

An article in the current issue of Advance, published by a group of liberal Republicans, which purports to tell the inside story of the semi-secret Goldwater for President meeting in Chicago last December raises some significant right-wing connections. For instance, the key man in the strategy session turns out to have been F. Clifton White, a New York public relations man who was second in command of the 1960 Nixon-Lodge Volunteers.

White worked for the New York State Republican Committee in the mid-50's, during a year or two of which time he was also a consultant to the Richardson Foundation which has financed much military-industrial-cold war activity. He and Joseph Eley once were high in the Effective Citizens Organization, which organizes political action programs, then formed their own business under the name of Public Affairs Counsellors, Inc. One of their clients in the former firm was the American Farm Bureau Federation; clients in the latter include such corporations as the Allen-Bradley Company.

A biographical note on Eley in the program of the right-wing 1962 Human Events Political Action Conference states that he was formerly director of publicity and public relations for Freedoms Foundation at Valley Forge, Pa.

Meanwhile, million-name petitions for Goldwater have been started in California by Del Kirkpatrick of Anaheim, and in Texas by Dr. A. D. Strozier, Jr., of Houston. In Nebraska, a Council for Conservative Action has been organized to boycott a testimonial dinner for Senator Hruska because liberal Gov. Nelson Rockefeller is to speak.

Civic leader blasts right-wingers

Floyd E. Galliher, co-chairman of the Citizens for Alton (Illinois) and an employee of the Standard Oil Co., has charged that John Birch Society members, and some local landlords are blocking a housing proposal to be voted on April 2 as a first step for urban renewal projects. In doing so, Galliher let loose a blast at the local right-wing, which was reported by the St. Louis Post-Dispatch of March 3 in part as follows:

"Three years ago," he said, "the so-called rightwing element of Alton was confined to tea time gatherings of the club and card party set. Anticommunism had almost the appearance of a club project for women who attended lectures and listened to speeches delivered by circuit-riding anti-communists.

* * *

"To the outside observer, Alton in recent years would appear to be a community which has lost its sanity and is bent on a pattern of self-destruction.

"Only one theme is consistent. The feeling that underlies almost all action is that of opposition. This mounting opposition has been accompanied by an ever increasing influence of ultraconservative forces."

The Alton area has been a center of activity for the Committee to Warn of the Arrival of Communist Merchandise on the Local Business Scene, supported by the John Birch Society; and the Post-Dispatch reported that some people active in that movement had also been active in opposing the housing act at City Council meetings.

Extremist sees UN plot in Pentagon

Pedro del Valle, a retired Marine Lieut. General, is crying alarm at military maneuvers in a large area of Georgia where the Pentagon is training 124 students from 17 friendly nations in warfare similar to that encountered in Viet Nam. Scripps-Howard reporter Jim G. Lucas quotes him as saying: "This could be a dress rehearsal for a United Nations takeover of the United States. It's a crash program to disarm the United States and make it a UN province." Lucas quoted a Pentagon official as saying that "all hell has broken loose" since del Valle started blasting.

Gen. del Valle is President of the Defenders of the American Constitution, Inc., one of the most extreme right-wing groups, and has been regarded as an active bigot as well.

He has been Vice President of the late Merwin K. Hart's National Economic Council, an advisory committee member of Liberty Lobby, a member of the Wake Up America Committee affiliated with We, The People!, a recent contributor to American Mercury, a Congressional witness against UN bonds representing the American Coalition of Patriotic Societies, and a speaker before the Congress of Freedom.

McIntire pickets Russian clergy

Pickets and protest rallies, organized by Rev. Carl I. McIntire, head of the dissident, fundamentalist American Council of Christian Churches, have greeted Russian church leaders in their trip around the U. S. on an exchange visit. McIntire operates the Twentieth Century Reformation Hour radio program and Christian Beacon newspaper from his Bible Presbyterian Church in Collingswood, New Jersey. He was "deposed" in 1936 by the Presbyterian hierarchy and has been at war with the National Council of Churches for many years as being too liberal. The NCC is sponsoring the Russians' tour.

In Denver, for example, 800 people turned out for McIntire's protest meeting, complete with pickets and petitions calling for an investigation of the State Department, and received huge publicity.

In Minneapolis, similar activity was organized by two advance men from McIntire's staff. Rev. Paul Rader, pastor of the fundamentalist River-Lake Gospel Tabernacle which hosted the rally, told the Minneapolis Tribune that we ought to get out of the U.N., that the National Association for the Advancement of Colored People "was started by Communists," that criticism of the John Birch Society "is disgraceful" and that the House Un-American Activities Committee ought to be strengthened.

McIntire is holding a protest meeting March 14 in Washington's Constitution Hall which is scheduled to include a speech by Major Edgar C. Bundy, head of the Church League of America, another right-wing extreme critic of the National Council of Churches.

Hargis on management and labor

The following is reprinted in its entirety from the March 1 issue of The Weekly Crusader, edited by Billy James Hargis:

CORRECTION

The Weekly Crusader, Vol. 3, No. 13, February 15, 1963, page four, column one, next to last paragraph, second sentence stated: "The real exploitation of the working man has been by the vast majority of employers." This was due to a line being erroneously dropped in preparing the type. The corrected sentence should read: "The real exploitation of the working man has been by the communist conspirators and socialistic-minded labor bosses rather than by the vast majority of employers." We sincerely regret this inadvertant omission of this key thought of this sentence.

JOE D. WAGGONNER, JR.
4TH DISTRICT, LOUISIANA

PARISHES:
BIENVILLE DE SOTO
BOSSIER RED RIVER
CADDO WEBSTER
CLAIBORNE

COMMITTEE ON
SCIENCE AND ASTRONAUTICS
COMMITTEE ON
HOUSE ADMINISTRATION

Congress of the United States
House of Representatives
Washington, D. C.

7 June 1963

110-4-1

Honorable Nicholas P. Callahan
Assistant Director
Administrative Division
Federal Bureau of Investigation
Washington 25, D.C.

are - 110-4-1

Dear Mr. Callahan:

*Encl
1*

Attached you will find ~~correspondence~~ correspondence from a constituent regarding Group Research, Inc. in which she requests information as to its purposes.

I would appreciate it if you would advise me of any knowledge you may have of this group. Please, also, return the attached when it has served its purpose.

My thanks in advance for this assistance.

Sincerely yours,

Joe D. Waggonner, Jr.
Joe D. Waggonner, Jr.
JDW/fwl

no pd
MCT-15
62-108790-1

REC-64 5 JUN 25 1963

EX-120

Encl: Ltr

b6
b7c

8-10TP

*See Howell to deLoach memo
6-13-63 (62-108790-4)
Kpl
JUL 3 1963
W. J. ...
libert ...*

*CONSIDERATION
no action*

b6
b7C



May 20, 1963

Honorable Joe D. Waggoner, Jr.,
House Office Building,
Washington, D. C.

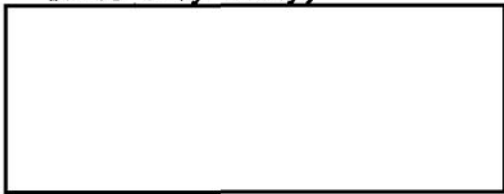
Dear Mr. Waggoner:

I enclose a Xerox copy of "McCune's 'Business'" by Edith Kermit Roosevelt from the Shreveport Journal of May 18, 1963, with regard to "Group Research, Inc."

Since the above group is listed as "non-profit" and "educational", I wonder whether its purposes might be checked.

Again, may I express to you my sincere appreciation for your courageous conservative stand in this Congress.

Yours very truly,



b6
b7C

med
Enclosure

62-108790-1

ENCLOSURE

8-270

TODAY'S NEWS TODAY—WITH TODAY'S PICTURES

Between the Lines—

McCune's 'Business'

By Edith Kermit Roosevelt



WASHINGTON — The name "Group Research, Inc." sounded intriguing. I decided to look into it. I have been a reporter for more than a decade but this gave me a new experience.

Wesley McCune, head of the three-room office, was out. While awaiting his return, I noticed a wall chart. When I began taking notes, the staff of three girls leaped up suspiciously and a young man came from an outer office. The scene ended with me being ordered to leave.

Next day, I tried again, and met McCune. He gave me a velvety welcome which turned to harsh negatives when I began to ask questions.

GROUP RESEARCH, Inc. has been quietly operating for more than a year. Only last month, a syndicated newspaper dispatch said the organization was investigating where and how "right-wing" groups got their financial backing. An informant told me it specialized in accumulating dossiers on anti-communists and so-called "rightists." When anti-communists do this, it is called a blacklist.

My decision to do some researching into Group Research, Inc., was hastened when I was told that its headquarters at room 422, 1404 New York Ave., N. W., was crammed with filing cabinets—one of which contained a card about Edith Kermit Roosevelt.

I wondered why the dossier on me included such details as that I had "discussed the folly of shipping foreign aid to India."

WHY SHOULD THIS go into a record in an office listing itself as "non-profit" and "educational?"

I was in eminent company. Also listed are writers, educators and scholars of world renown. Dr. Wilhelm Roepke, who helped guide West Germany's miraculous post-war economic recovery, is one. Why? Also anyone who was a sponsor of groups like Young Americans for Freedom, or is listed on the masthead of publications such as Modern Age. This academic-type quarterly features contributions by such "extremists" as Phillip E. Moseley, director of studies, Council on Foreign Relations, New York, Msgr. J. M. Lally, editor of the Pilot, and Louis L. Gerson, professor of political science at the University of Connecticut.

Who compiles this "educational" information? McCune was assistant to Charles F. Brannan when he was Secretary of Agriculture, and later

was public information officer of the National Farmers Union.

GROUP RESEARCH'S certificate of incorporation is signed by two Washington attorneys: Daniel M. Singer of 5410 39th St., N.W., and James H. Heller of 3916 Ingomar St., N.W. Heller is secretary of the Washington chapter of the American Civil Liberties Union which vigorously opposes dossiers on pinks and pro-Reds.

The chart in this office listed a dozen organizations opposed to communism, such as the Farm Bureau Federation, the Association of American Physicians and Surgeons, Freedoms Foundation at Valley Forge, American Security Council, American Committee for Aid to Katanga Freedom Fighters, American Enterprise Association, Young Americans for Freedom, Committee Against Summit Entanglement, Harding College, and the Foundation for Economic Freedom.

Above these names were colored balloons bearing the labels, "racism," "book-burners," "bogey of inflation—the balanced budget," "pro-military," "anti-Cuban extremists," "anti-UNICEF," "anti-semitic," "anti-medicare," "states' rights primitives," "censorship," and "anti-federal aid to education."

AS I COPIED this, the young man came forward. He bluntly asked me to leave. "We don't want publicity," he explained. The receptionist, a blonde with an up-sweep hairdo, declared, "This is a private organization. You aren't supposed to take inventory. We told you to leave."

I saw fear in her eyes, mingled with hate. Of what? What was there to hide?

One of the questions I naturally asked McCune was: "For whom are you compiling these names and data?" I pointed to the 100 filing cabinets and drawers lining the offices. "That's my business," he said.

"WHO ARE THE people behind your group?" "That's my business," he said.

This secretiveness and the smear labels on the chart raised many questions. I thought of the curiously synchronized campaign alleging the wealth of anti-Communist groups, broadly implying that anti-red leaders were raking in huge profits. These smears are false but they dried up many contributions, forcing serious cutbacks in the work of these anti-Communist groups.

A final question: "Who pays for Group Research?" I asked McCune. He said: "That's my business."

I think it is my business — and that of the public!

8-RTT

UNITED STATES GOVERNMENT

Memorandum

TO : Mr. DeLoach

DATE: 6/13/63

Tolson	_____
Belmont	_____
Mohr	_____
Casper	_____
Callahan	_____
Conrad	_____
DeLoach	✓
Evans	_____
Gale	_____
Rosen	_____
Sullivan	_____
Tavel	_____
Trotter	_____
Tele. Room	_____
Holmes	_____
Gandy	_____

FROM : D. C. Morrell *DCM*

SUBJECT: REPRESENTATIVE JOE D. WAGGONER, JR.
REFERRAL OF CONSTITUENT [redacted]

b6
b7c

By letter to Assistant Director Nicholas P. Callahan, dated 6/7/63, captioned Congressman enclosed a copy of a letter received from his constituent, [redacted] dated 5/20/63, which letter asked Waggoner about the purposes of the organization, Group Research, Inc., which was listed as a "non-profit" and "educational" group. [redacted] enclosed a Xerox copy of a newspaper column by Edith Kermit Roosevelt appearing in the Shreveport Journal under the date of 5/18/63 which described Roosevelt's intrigue with the name of the group causing her to attempt to investigate further. She reported in her column that she was not able to determine very much information due to the secretive and cool reception she received when visiting the office of the group located at 1404 New York Avenue, N. W., Washington. She did, however, note that this group appeared to compile dossiers on anticommunist groups. In addition, she named Mr. Wesley McCune, formerly with the Department of Agriculture, [redacted] and Mr. James H. Heller, both Washington attorneys, as being associated with this group.

b6
b7c

b6
b7c

BUFILES:

D.C.

Congressman Waggoner, Democrat - Louisiana, is a staunch segregationist and a conservative Democrat who has reportedly made derogatory remarks against the President and his brother in connection with their integration activities.

EX-120

REC-64 62-108790-2

Very little information has come to our attention concerning Group Research, Inc. Two reports of this group appear to relate in a matter-of-fact style the events of right-wing groups making no effort to be critical of them. McCune was the subject of a loyalty investigation in 1948 and was known as an active member of the Washington Book Shop Association in 1941 which group has been cited. [redacted] was reportedly a member of the "Council for Abolition of War" which group has not been investigated by the Bureau. There is nonspecific

b6
b7c

- 1 - Mr. DeLoach - Enclosures (3)
- 1 - Mr. M. A. Jones - Enclosures (3)

JUN 25 1963

DTP:ngf
(4)

58 JUL 3 1963

file 8

Memorandum to Mr. DeLoach
Re: Representative Joe D. Waggoner, Jr.

information in our files indicating [redacted] may be disloyal to the United States. Heller is described in Bufiles as a member of the American Civil Liberties Union and has defended people with questionable backgrounds and others who are Communist Party members.

b6
b7C

OBSERVATION:

A letter over the Director's signature concerning another sensitive issue to Congressman Waggoner, who is obviously opposed to the racial policies of the administration, may not be to the best interest of the Bureau at this time.

RECOMMENDATION:

That someone from your (DeLoach) office contact appropriate person in Congressman Waggoner's office and advise him in confidence that Group Research has not been investigated by the Bureau. At the time of this contact, [redacted] letter and her enclosure should be returned to Waggoner's office.

b6
b7C

Handled
.6/14
eck
JPH
2/11/7
Yes.
[Signature]
[Signature]
✓
[Signature]

- Tolson
- Belmont
- Mohr
- Casper
- Callahan
- Conrad
- DeLoach
- Evans
- Gale
- Rosen
- Sullivan
- Tavel
- Trotter
- Tele Room
- Holmes
- Gandy

RICHARD WILSON

Labor's Index of the 'Non-Left'

Listings—Eisenhower, Rockwell, Etc.— Is Called Divisive and a Fear Tactic

"Eisenhower, Dwight D.: II—Grede, William: IV—No. 12, Frdms. Fdn., 5, 21, 40."

This cryptic reference is to Gen. Dwight D. Eisenhower as he is listed in the "index" of Group Research, Inc. This identifies Gen. Eisenhower with various kinds of conservative organizations and principles which are explained in more detail in what is called the Group Research, Inc. Directory.

Gen. Eisenhower, and many others who have made great contributions to the Nation's security and welfare, are thus bracketed and "indexed" with the wild and woolly partisans of the far right.

The former President shares this distinction with Gen. Omar Bradley, Clare Booth Luce, Gen. James A. Van Fleet, Ozzie and Harriet, Chiang Kai-shek, Gen. Mark W. Clark, the late John Foster Dulles, Herbert Hoover, J. Edgar Hoover, and many others too numerous to mention.

They are all dumped unceremoniously into the "index" along with such proud wearers of the far-right label as Gerald L. K. Smith, Kent and Phoebe Courtney, and the American Nazi leader, George Lincoln Rockwell.

The indexing is truly portentous. Take, for example, Capt. Eddie Rickenbacker, the World War I ace flyer and organizer of Eastern Airlines. This culprit is classed thus: "Rickenbacker, Capt. Edward V.: I—Com. For Monroe Doctrine, 1-2 Yaf. 5; II—Clark, Fred., 2; Rickenbacker, IV—Nov. 7, Natl. Intlg. Con., 2; No. 11 Hargis 19; No. 12, Frdms. Fdn., 21, 28."

All this abacadaabra indicates that Capt. Eddie has been pretty active in expressing himself. The abbreviation "Frdms. Fdn." means Freedom Foundation and has gotten a lot of people into the "index," including Harold Stassen. Freedom Foundation is described by the operators of Group Research Inc. as a "conservative-patriotic" society, but is considered by others to be a well-meaning organization promoting respect for American institutions.

Group Research, Inc. came into being a year or so ago with the "encouragement" of the AFL-CIO and other organizations, according to its founder, Wesley McCune. Mr. McCune took leave of his position as public relations director of the Farmers Union, the liberal farm organization which aligns itself with Americans for Democratic Action and the Auto Workers Union, to devote himself to Group Research, Inc. He says it is supported by numerous clients including labor unions, farm organizations, universities, cooperatives, etc.

The "Index" runs some 46

typed pages and includes approximately 2,300 names. Director McCune says this research material is for the use of people and organizations desiring to identify various personalities, right or left, for various reasons. But it is clear that at least 90 per cent of the people "indexed" are on the conservative side, and he admits this. He has thrown them all in higgledy-piggledy because it is just too hard to grade conservative identifications in their varying degrees from center to far right.

The "Index" and the "Directory" are used by labor unions and AFL-CIO's Committee on Political Education to carry on the warfare against the far right. One labor organization has circulated the "Index" to key people along with the following directions on how to use it:

"When you hear that a right-wing speaker is coming to town, check him immediately in the directory and alert friendly groups. . . . Inform your local newspaper by personal visit if possible. . . . The idea is to alert demo-

[Handwritten mark]

- The Washington Post and Times Herald _____
- The Washington Daily News _____
- The Evening Star
- New York Herald Tribune _____
- New York Journal-American _____
- New York Mirror _____
- New York Daily News _____
- New York Post _____
- The New York Times _____
- The Worker _____
- The New Leader _____
- The Wall Street Journal _____
- The National Observer _____
- Date Nov 20, 1963

62-108790-3

8 DEC 11 1963

REC-22

EX-198
What do our files show on Wesley McCune & Group Research Inc?

K

Jan 12 1964
memo: 12-3-63
57 DEC 17 1963

cratic groups to the possibility of trouble. . . . Use the letters-to-the-editor column. . . . Develop a pool of well-informed speakers to address church groups, fraternal, civic and service organization and schools. . . . In many cases, exposure alone will turn the tide. . . . Labor can provide real leadership in such a maneuver."

"Mention of a person or organization in this directory has no editorial significance of itself," says Director McCune, apparently suffering a slight twinge of conscience. "The user must draw his own conclusions in each instance."

Users do draw their own conclusions and the Index and Directory are used to spread a new kind of guilt-by-association. These tactics increase the already great misunderstandings in American public life. The tactics are divisive. They spread fear and suspicion.

All these things were said a generation ago about the anti-Communist activity of the late Senator Joseph R. McCarthy. They were said by the same people who now are using tactics which do not differ much in principle from those they once criticized.

UNITED STATES GOVERNMENT

Memorandum

TO : Mr. DeLoach

DATE: 12-3-63

FROM : M. A. Jones

SUBJECT: JOHN WESLEY MC CUNE
GROUP RESEARCH, INC.
WASHINGTON, D. C.

- Tolson _____
- Belmont _____
- Mohr _____
- Casper _____
- Callahan _____
- Conrad _____
- DeLoach _____
- Evans _____
- Gale _____
- Rosen _____
- Sullivan _____
- Tavel _____
- Trotter _____
- Tele. Room _____
- Holmes _____
- Gandy _____

*Reilly
Eadler*

Baumgardner

b6
b7C

"The Washington Evening Star" of 11-20-63 carried a column by Richard Wilson entitled "Labor's Index of the 'Non-Left'" which relates to captioned organization. The column states that Group Research, Inc., produces an "index" and "directory" of persons allegedly identified with conservative or right-wing organizations. Such distinguished persons as the Director and former Presidents Eisenhower and Hoover are "dumped unceremoniously" into this index with such far right extremists as Gerald L. K. Smith. **The index is used by labor in combating the far right. It contains some 2,300 names thrown in together with no attempt at grading conservative identifications in their degrees from center to far right, thus establishing a new kind of guilt by association.**

The column reports that Wesley McCune founded Group Research, Inc., a year or so ago with the encouragement of labor; after he took leave from a position as public relations director of the Farmers Union, a liberal farm group. McCune claims his work is supported by labor unions, farm organizations, universities, etc.

b6
b7C

Mr. Hoover commented, "What do our files show on Wesley McCune and Group Research, Inc. ? H."

INFORMATION IN BUFILES:

Summary DC.

John Wesley McCune, born 6-6-16, Kansas City, Missouri, was employed by the Department of Agriculture in 1939 and subsequently held positions with the Bureau of National Affairs, Newsweek Magazine, Time, Inc. and the Kiplinger Magazine. We conducted a loyalty investigation concerning him in 1948 when he was an Executive Assistant to the Secretary of the Department of Agriculture. **It was developed that he was an active member of the Washington Bookshop Association in 1941, and was in the active indices of the National Federation for Constitutional Liberties.** Both of these organizations have been cited by the Attorney General. McCune was retained by the Department of Agriculture after the completion of this investigation.

1 - Mr. DeLoach

ELR:jol (6)

REC-22 62-108790-4

DEC 11 1963

ST-104

XEROX

DEC 11 1963

b6
b7C

UNRECORDED COPY FILED IN 101-2275

M. A. Jones to DeLoach Memo
RE: JOHN WESLEY MC CUNE

In June, 1963, Congressman Joe D. Waggoner, Jr., of Louisiana asked us about McCune and Group Research, Inc., based on a constituent inquiry. Waggoner furnished a Xerox copy of a newspaper column by Edith Kermit Roosevelt, which appeared in the "Shreveport Journal" under the date of 5-18-63. This column outlined Roosevelt's attempt to ascertain the operations of Group Research, Inc., 1404 New York Avenue, Northwest, Washington. According to her column, she visited this office but received a cool and secretive reception. She was able to determine, however, that the group was compiling dossiers on anticommunists and "right-wing groups." It was also concerned with investigating the financial backing of these groups and in publishing data concerning them in what Roosevelt referred to as a "blacklist."

With regard to Congressman Waggoner's inquiry in this matter, his office was contacted and advised in confidence that the Bureau had not investigated Group Research, Inc.

We received information also in June, 1963, that the Committee of Political Education (COPE) of the American Federation of Labor and Congress of Industrial Organizations was backing Group Research, Inc. It was alleged that Group Research, Inc., has two functions: (1) to disseminate a monthly newsletter of current right-wing action and (2) to maintain a directory of right-wing individuals, organizations and publications. It was indicated that information received from Group Research, Inc., would be used by COPE in a concerted effort throughout the country to discredit conservative groups and leaders.

Files contain no additional information of pertinence relating to Group Research, Inc.

RECOMMENDATION:

For information of the Director.

Keyne
HW

D

August 4, 1964

EX-112 REC-66

62-108790-5



b6
b7c

4
BR

Dear

Your letter of July 29th, with enclosure, has been received, and I want to thank you for your favorable comments.

The interest which prompted you to write is appreciated, and you may be sure your letter will be made a matter of record in our files.

Sincerely yours,

J. Edgar Hoover

AUG 4 3 27 PM '64
REC'D-READING ROOM
FBI

- 1 - Washington Field - Enclosures (2)
- 1 - New Haven - Enclosures (2)

ATTENTION SACs: Correspondent is not identifiable in Bufiles. **Group Research, Incorporated** is an organization which is alleged to produce an "index" and "directory" of persons allegedly identified with conservative or right-wing organizations. The index is to be used by labor in combating the far right. It was founded by John Wesley McCune. **McCune was subject of loyalty investigation by the Bureau in 1948 when he was an Executive Assistant to the Secretary of the Department of Agriculture. It was developed that he was an active member of the Washington Bookshop Association in 1941, and was in the active index of the National Federation for Constitutional Liberties. Both of these organizations have been cited by the Attorney General. McCune was retained by the Department of Agriculture after the completion of this investigation.**

MAILED 25
AUG - 4 1964
COMM-FBI

- Tolson _____
- Belmont _____
- Mohr _____
- Casper _____
- Callahan _____
- Conrad _____
- DeLoach _____
- Evans _____
- Gale _____
- Rosen _____
- Sullivan _____
- Tavel _____
- Trotter _____
- Tele. Room _____
- Holmes _____
- Gandy _____

SAW:plr (5)

60 AUG 12 1964

MAIL ROOM TELETYPE UNIT

Handwritten signature/initials

Handwritten signature/initials

Handwritten initials

Handwritten initials

July 29, 1964

Honorable J. Edgar Hoover, Director
Federal Bureau of Investigation
U. S. Department of Justice
Washington 25, D. C.

Dear Sir:

For many years I have been active in upholding the constitutional principles that made our Country the greatest in the world, and fighting subversives and their activities as best I could in my small way. I am sending the attached copy of a letter written to Group Research, Inc. in the hope that I may secure some additional information.

Needless to say, I have been aware of this organization almost from its inception and have a rather complete file up/duly of last year. In an effort to bring it up-to-date I have written what I hope will be an innocuous request, and not wanting to be identified in any way as belonging to - being a supporter of - or in any way approving of their activities, wished your department to have a copy of this my first and only letter to this group.

Knowing how easy it is to get involved with such groups merely in requesting information and thereby being placed on their mailing list, I am taking this course of action, which I trust will be the proper one.

With the greatest respect for your dedication to our beloved Country and the preservation of its ideals, I am

Most sincerely,

[Redacted signature area]

[Redacted name area]

REC-65

62-108790-5

AUG 6 1964

b6
b7c

1- ENCLOSURE

ack 9/4/64
SAW/plc

CORRESPONDENCE

July 29, 1964

Group Research, Inc.
1404 New York Avenue, N. W.
Room 422 - Bond Building
Washington, D. C.

Gentlemen:

Having recently become acquainted with your organization's activities concerning the 'right-wing extremists' etc., I am wondering if you have a newsletter or other information that might be helpful to me in some research I am doing on this particular subject.

Anything you can give me that would be of assistance would be greatly appreciated, and thank you.

Sincerely,

[Redacted]

[Redacted]

b6
b7C

62-108790-5
ENCLOSURE

- Tolson _____
- Belmont _____
- Mohr _____
- Wasper _____
- Callahan _____
- Conrad _____
- DeLoach _____
- Evans _____
- Gale _____
- Rosen _____
- Sullivan _____
- Tavel _____
- Trotter _____
- Tele Room _____
- Holmes _____
- Gandy _____

Income of Right-Wing Groups Reportedly Tripled in 5 Years

By Morton Mintz
Staff Reporter

Right-wing organizations have been thriving. Their income, apparently, tripled between 1958 and 1963. A large part of their financing is aided by the exemption and donation provisions of the tax laws.

These conclusions are found in a new study by Group Research, Inc. of Washington, which gathers information on right-wing and conservative economic and political lobbies and organizations.

Other major conclusions and comments in the 25-page report:

- "A reasonably conservative guess" of total spending by broadly defined right-wing organizations is \$30 million a year.

- Right-wing groups, many of which date back to the 1950s and even earlier, have been growing financially at an average rate of 17 per cent a year, even with years of abnormally large growth excluded from the computation.

- Because of the tax laws, taxpayers indirectly support "far more of the political and economic right-wing than they realize."

- Reliance on contributions has been falling. For the five years ending in 1962, the amount of total receipts made up of contributions dropped from an estimated 88 to 73 per cent. In the same period, income from sale of publications and other materials increased from 9 to 21 per cent.

- While large contributors are sometimes of key importance, most right-wing operations apparently have very broadly based support.

- A substantial number of important contributors donate to a number of outfits in the study, although the organizations are strikingly dissimilar in character.

Group Research sends a semi-monthly newsletter and other publications. It was founded and is headed by Wesley McCune, a former Washington reporter for Newsweek, Time and Changing Times. For its report, entitled "The Finances of the Right-Wing," Group Research said its sources included public records on tax-exempt organizations, filings under the Federal Corrupt Practices and Lobbying Acts, records avail-

~~REC-46~~



Blair

- The Washington Post and Times Herald A-8
- The Washington Daily News _____
- The Evening Star _____
- New York Herald Tribune _____
- New York Journal-American _____
- New York Mirror _____
- New York Daily News _____
- New York Post _____
- The New York Times _____
- The Worker _____
- The New Leader _____
- The Wall Street Journal _____
- The National Observer _____
- People's World _____

REC-46 / 62-108790-A
NOT RECORDED
128 OCT 9 1964

5/26/64

266 14 10 19 64

RECEIVED DIRECTOR

file-5

GARY

SEP 14 1964

70 OCT 13 1964

b6
b7c

able in states requiring information from organizations soliciting public funds, and statements made by the groups themselves.

The report says that the right-wing organizations that at least aspire to some sort of national status "must be counted in the hundreds." Although they cover a wide range and include "responsible" as well as "irresponsible" elements, they are "inter-linked at various points in terms of interest, ideology, and personnel."

Group Research selected for its study 30 it believed to be representative. They range from "out-and-out bigots, such as Gerald L.K. Smith and the late Conde McGinley's Common Sense, as well as the segregationist Citizens Councils of America" to such conventional organizations as the American Economic Foundation, the Foundation for Economic Education, and the Intercollegiate Society of Individualists.

Findings about the selected 30 included the following:

In 1962, their combined income was an estimated \$12.2 million, 150 per cent more than 1958's \$4.9 million. The years of greatest increase were 1961 and 1960. Seventeen had Federal tax exemptions. Income for 1963 was projected to have been \$14.3 million.

A "top ten" ranking for 1958, 1960, and 1962 shows that six organizations appeared in all three listings. The John Birch Society made the grade for the first time in 1962.

In the 1962 list, the leader is the 90th Century Reformation Hour, the radio commentary of the Rev. Carl McIntire. Its income was put at \$1,163,000, compared with \$62,000 in 1958 and \$382,500 in 1960. The fundamentalist minister, whose program is heard daily on more than 600 stations, attacks the National Council of Churches, the nuclear test ban treaty, the income tax, and the civil rights movement.

Next in order of income in the 1962 list came Human Events, (\$1,005,900, up \$676,800 from 1958), founded in 1944 by former members of the America First Committee and an advocate of the sale of the Post Office to private enterprise, Life Line, (\$994,

300, up \$944,100 from 1958), oil multimillionaire H. L. Hunt's foundation, that pushes an ultra-conservative view on radio and in publications.

Also, the John Birch Society (\$826,100, up \$696,300 from 1959), founded by Robert Welch, who has called former President Eisenhower a "dedicated, conscious agent of the Communist conspiracy," the Christian Crusade, (\$775,400, up \$500,100 from 1958), which is headed by the Rev. Billy James Hargis, who has said that the National Council of Churches has indicted itself "on 50 counts of treason to God and country."

Also, The Christian Anti-Communism Crusade, (\$725,500, up \$620,600 from 1958), headed by Dr. Fred C. Schwarz, who was brought to this country from Australia by Mr. McIntire, and Freedom's Foundation at Valley Forge, (\$706,200, up \$378,700 from 1958), whose awards for extending and preserving "the American way of life" frequently go to right-wing figures.

The Group Research report named as important contributors to 20 selected right-wing groups: Barber-Colman Co.; Harry L. Bradley, chairman of Allen Bradley Co.; retired Du Pont executive Donaldson Brown; F. Gano Chance, chairman of A. B. Chance Co.; lawyer Robert Dresser; retired steel executive Robert Donner.

Also, Charles Edison, former chairman of McGraw Edison, three former presidents of the National Association of Manufacturers, Robert M. Gaylord, Charles Hook, and William Grede, Milwaukee industrialist, Walter Harnischfeger, textile magnate, A. G. Reinson, Jr., Eli Lilly, honorary chairman of the pharmaceutical firm bearing his name, Philip M. McKenna, president of Kennametal, Inc., Roger Milliken, members of his family, and Deering Milliken, Inc.

Also, Sun Oil chairman J. Howard Pfw, valve and fitting maker Herbert C. Stockham, DeWitt and Ella Wallace, publishers of Reader's Digest, electrical heating equipment maker Edwin B. Wiegand, and retired Sears Roebuck chairman Gen. Robert W. Wood.

644
14/1
2/2

USA

USA

USA

USA

USA

CONTRIBUTORS TO RIGHT WING GROUPS

WISC

7-1
1/1
1/9

Tolson _____
 Belmont _____
 Mohr _____
 Casper _____
 Callahan _____
 Conrad _____
 DeLoach _____
 Evans _____
 Gale _____
 Rosen _____
 Sullivan _____
 Tavel _____
 Trotter _____
 Tele Room _____
 Holmes _____
 Gandy _____

Income of Right-Wing Groups Reportedly Tripled in 5 Years

By Morton Mintz
Staff Reporter

Right-wing organizations have been thriving. Their income apparently tripled between 1958 and 1963. A large part of their financing is aided by the exemption and donation provisions of the tax laws.

These conclusions are found in a new study by Group Research, Inc., of Washington, which gathers information on right-wing and conservative economic and political lobbies and organizations.

Other major conclusions and comments in the 25-page report:

- "A reasonably conservative guess" of total spending by broadly defined right-wing organizations is \$30 million a year.

- Right-wing groups, many of which date back to the 1950s and even earlier, have been growing financially at an average rate of 17 per cent a year, even with years of abnormally large growth excluded from the computation.

- Because of the tax laws, taxpayers indirectly support "for more of the political and economic right-wing than they realize."

- Reliance on contributions has been falling. For the five years ending in 1962, the amount of total receipts made up of contributions dropped from an estimated 88 to 73 per cent. In the same period, income from sale of publications and other materials increased from 9 to 21 per cent.

While large contributors are sometimes of key importance, most right-wing operations apparently have very broadly based support.

36 cents

REC-38
ST-110

File 5

b6
b7c

The Washington Post and WP
 Times Herald _____
 The Washington Daily News _____
 The Evening Star _____
 New York Herald Tribune _____
 New York Journal-American _____
 New York Mirror _____
 New York Daily News _____
 New York Post _____
 The New York Times _____
 The Worker _____
 The New Leader _____
 The Wall Street Journal _____
 The National Observer _____
 People's World _____
 Date 9/14/64
 Page A 8

REC-38

62-108770-A
 NOT RECORDED
 46 OCT 1 1964

ARTIALLY
 REINDEXED
 WOP NEWS
 PAPER CLIPPINGS
 5/12/66
 #31

61 OCT 9 1964

A substantial number of important contributors donated to a number of outfits in the study, although the organizations are strikingly dissimilar in character.

Group Research sells a semi-monthly newsletter and other publications. It was founded and is headed by Wesley McCune, a former Washington reporter for Newsweek, Time and Changing Times.

For its report, entitled "The Finances of the Right Wing" Group Research said its sources included public records on tax-exempt organizations, filings under the Federal Corrupt Practices and Lobbying Acts, records avail-

able in states requiring information from organizations soliciting public funds, and statements made by the groups themselves.

The report says that the right-wing organizations that at least aspire to some sort of national status "must be counted in the hundreds." Although they cover a wide range and include "responsible" as well as "irresponsible" elements, they are interlinked at various points in terms of interest, ideology and personnel.

Group Research selected for its study 30 it believed to be representative. They range from "out-and-out bigots, such as Gerald L.K. Smith and the late Conde McGinley's Common Sense," as well as the segregationist Citizens Councils of America, to such conventional organizations as the American Economic Foundation, the Foundation for Economic Education, and the Intercollegiate Society of Individualists.

Findings about the selected 30 included the following:

In 1962, their combined income was an estimated \$12.2 million, 150 per cent more than 1958's \$4.9 million. The years of greatest increase were 1961 and 1960. Seventeen had Federal tax exemptions. Income for 1963 was projected to have been \$14.3 million.

A top ten ranking for 1958, 1960 and 1962 shows that six organizations appeared in all three listings. The John Birch Society made the grade for the first time in 1962.

In the 1962 list the leader is the Century Reformation Jr. the Radio Commentary of the Rev. Carl McIntire. Its income was put at \$1,163,000, compared with \$62,000 in 1958 and \$382,500 in 1960. The fundamentalist minister, whose program is heard daily on more than 600 stations, attacks the National Council of Churches, the nuclear test-ban treaty, the income tax and the civil rights movement.

Next in order of income in the 1962 list came "Human Events" (\$1,005,900, up \$676,800 from 1958), founded in 1944 by former members of the America First Committee and an advocate of the sale of the Post Office to private enterprise. Life Line (\$894,300, up \$944,100 from 1958), oil multimillionaire H. L. Hunt's foundation that pushes an ultra-conservative view on radio and in publications.

Also, the John Birch Society (\$826,100, up \$696,300 from 1959), founded by Robert Welch, who has called former President Eisenhower a "dedicated, conscious agent of the Communist conspiracy," the Christian Crusade (\$775,400, up \$500,100 from 1958), which is headed by the Rev. Billy James Hargis, who has said that the National Council of Churches has indicted itself "on 150 counts of treason to God and country."

Also, The Christian Anti-Communism Crusade (\$725,500, up \$620,600 from 1958), headed by Dr. Fred C. Schwarz, who was brought to this country from Australia by Mr. McIntire, and the Redores Foundation at Valley Forge (\$706,200, up \$378,700 from 1958), whose awards for extending and preserving "the American way of life" frequently go to right-wing figures.

The Group Research report named as important contributors to 20 selected right-wing groups: Barber Colman Co.; Harry I. Bradley, chairman of Allen Bradley Co., retired DuPont executive; Donaldson Brown; F. Gano Chance, chairman of A. B. Chance Co., lawyer; Robert Dresser, retired steel executive; Robert Conner

Also, Charles Edson, former chairman of Alcoa; Edson, three former presidents of the National Association of Manufacturers; Robert M. Gaylord; Charles Hook; and William Grede; Milwaukee industrialist Walter Harnischfeger; textile magnate A. G. Heinsohn Jr.; Eli Lilly, honorary chairman of the pharmaceutical firm bearing his name; Phillip M. McKenna, president of Kennametal Inc.; Roger Milliken, members of his family; and Deering Milliken Inc.

Also, Sun Oil, chairman Howard Pew; valve and fitting maker Herbert C. Stockham; DeWitt and Lisa Wallace, publishers of Reader's Digest; electrical heating equipment maker Edwin L. Wiegand; and retired Sears Roebuck chairman Gen. Robert E. Wood.

Tex:

USA

USA

USA

USA

USA

USA

USA

USA

USA

USA

USA

USA

USA

DC

DC

DC

DC

DC

DC

DC

DC

DC

2

October 7, 1964

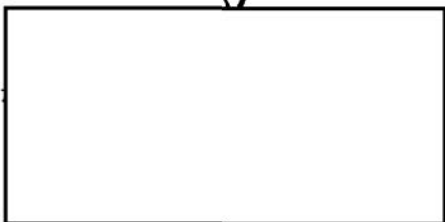
OCT 7 3 51 PM '64
REC'D-READING ROOM
F B I

b6
b7c

EX 107

REC-31

62-108790-6



Dear

Your letter of October 2nd, with enclosure, has been received.

With respect to your inquiry, information contained in the files of the FBI must be maintained as confidential in accordance with regulations of the Department of Justice and is available for official use only. I regret I am unable to be of assistance in this instance but trust you will understand the necessary reasons for this policy.

Sincerely yours,

Handwritten signature/initials

MAILED 3
OCT 14 - 1964
COMM-FBI

NOTE: Correspondent is not identifiable in Bufiles. Younkers is a department store in Des Moines and there is nothing derogatory in Bufiles concerning it nor have we had any correspondence with it. Group Research, Incorporated is an organization which is alleged to produce an "index" and "directory" of persons allegedly identified with conservative or right-wing organizations. The index is to be used by labor in combating the far-right. It was founded by John Wesley McCune. McCune was subject of loyalty investigation by the Bureau in 1948 when he was an Executive Assistant to the Secretary of the Department of Agriculture. It was developed that he was an active member of the Washington Bookshop Association in 1941, and was in the active index of the National Federation for Constitutional Liberties. Both of these organizations have been cited by the Attorney General. McCune was retained by the Department of Agriculture after the completion of this investigation.

- Tolson _____
- Belmont _____
- Mohr _____
- DeLoach _____
- Casper _____
- Callahan _____
- Conrad _____
- Evans _____
- Gale _____
- Rosen _____
- Sullivan _____
- Tavel _____
- Trotter _____
- Tele. Room _____
- Holmes _____
- Gandy _____

DFC:mc

OCT 13 1964

MAIL ROOM TELETYPE UNIT

edm

Handwritten signatures and initials

YOUNKERS

DES MOINES 4, IOWA

EXECUTIVE OFFICE

October 2, 1964

Federal Bureau of Investigation
Washington
D. C.

Gentlemen:

We note that in recent months, unsolicited on our part, we have been receiving through the mail at our home address the enclosed.

Can you tell us the type of organization this Group Research, Inc. may be.

Any information or expression by you would be very much appreciated.

Sincerely yours,

YOUNKERS



b6
b7C

*ack 10-7-64
DFC/mc
nme
d*

CD:df
encl.

REC-31

62-108790-76-

EX-101

18 OCT 8 1964

ENCLOSURE

ENCLOSURE ATTACHED

OCT 2 15 34 PM '64

CORRESPONDENCE

*nme
g*

C7

ENCLOSURE

ENCLOSURE

62-108790-6

GROUP RESEARCH REPORT

Vol. 3, No. 16



September 1, 1964

Right wing leads in battle of printing presses

Any Presidential campaign stimulates the production of campaign literature, both official and scurrilous, but this year's political battle has already produced more from just one side—the Republican right-wing side—than is usual for both sides, and the real fighting supposedly hasn't started yet.

The chief weapon of the arch-critics of President Lyndon Johnson has been the paperback book, several of which appeared even before the GOP convention. One, which was essentially a plea for Goldwater as against the "Eastern king-makers," was written by Phyllis Schlafly, Research Director of the Cardinal Mindszenty Foundation and President of the Illinois Federation of Republican Women. It is called *A Choice, Not an Echo*. Another early arrival, and now a best-seller is *None Dare Call It Treason*, written by a newcomer in the far-right, John A. Stormer, a Missouri trade paper editor and President of the Young Republicans of that state. Stormer blames every President since Hoover for losses to Communism and weaves leftist conspiracy through hundreds of authentic-looking footnotes. Both authors represent the infiltration or take-over of the GOP right-wingers.

Two other paperback jobs which are selling briskly were produced by Frank Kluckhohn, an ex-New York *Times* reporter who has also occupied high security posts in the government. Kluckhohn updated an earlier attack on the late President Kennedy for publication as *Lyndon's Legacy* and turned out a slashing attack on the new President called *The Inside on LBJ*. Kluckhohn's right-wing involvement was made clear by his appearance last month at Billy James Hargis's annual meeting of the Christian Crusade in Dallas.

Perhaps the hottest item on the paperback counters is a similar job done by an established radical rightist, J. Evetts Haley, called *A Texan Looks At Lyndon, A Study In Illegitimate Power*. Haley is head of a far-right group, Texans for America; has been the leading harasser of librarians and text-book selectors for Texas schools; and achieved national attention in 1962 for urging that Chief Justice Warren not be impeached but hanged (according to *Newsweek*) or lynched (according to *Time*).

A tabloid along the same line was published earlier by Liberty Lobby, one of the far-out groups based in Washington, and a similar version of the story appeared in *Human Events*, the ultraconservative Washington weekly, and has been promoted in nearly every issue since.

Another relative newcomer with a book claiming subversion in high places is Philip M. Crane, a young history professor at Bradley University who admits having worked for the Republican Party in 1962. His hardback volume is called *The Democrat's Dilemma* but is more of a long allegation that the British Fabians have captured the Democratic Party through the League for Industrial Democracy. His first chapter, entitled "Hate," is an attack on critics of the right-wing. (Regnery, Chicago, \$4.95)

In addition to these more jazzed-up arrivals, there is a continuing flow of new right-wing literature in all shapes and sizes. Prof. Russell Kirk, columnist for *National Review* magazine and an intellectual leader of the movement, has come out with a new book called *Confessions of A Bohemian Tory* (Fleet, 308 pp., \$4.50); and the Intercollegiate Society of Individualists has published two lectures by William H. Peterson, a Professor at New York University, contributor to the *Wall Street Journal* editorial page, and author of a book urging the end of the Federal farm program.

Also on the more intellectual level, a magazine named *Western Destiny* has been started by a group centered in Milwaukee and given a rousing send-off by such far-righters as Kenneth Goff, W. A. Carto and Verne P. Kaub. Authors in the first issue include Charles Callan Tansill and J. Bracken Lee.

The John Birch Society has announced a new publication to be called "Correction Please!" It makes an 8-page weekly out what has been a regular monthly feature of the Birch magazine, *American Opinion*, and will sell for \$10 a year.

Descriptions of right-wing also published

Meanwhile, journalists and authors are digging deeper into what makes various right-wing groups tick at both local and national levels. The writing team of Harry and Bonaro Overstreet, who have specialized in communism and anti-communism, will have a book released in a few days called *The Strange Tactics of Extremism*. And Tristram Coffin, author of *The Passion of the Hawks*, which includes military aspects of the right wing, will have that volume reissued in paperback as *The Armed Society*.

At least three metropolitan newspapers have recently printed a series of articles on the right wing in their areas: The *Denver Post*, *Miami Herald* and *St. Petersburg Times* jointly, and *Kansas City Star* (on the Minutemen). In addition, the *New York Times* carried two long articles about H. L. Hunt, the Texas oil billionaire and right-wing enthusiast who operates Life Lines; the *Norfolk Virginia-Pilot* had an article about the Southern States Industrial Council; and the *Washington Post* delved into the partisan Goldwater connections of the tax-exempt American Enterprise Institute for Public Policy Research.

Also, a hard-hitting answer to extremists has just been published by Rev. Brooks Walker, a Unitarian preacher whose Los Angeles home was bombed in 1962 while he was addressing a meeting about countering right-wing activity. (*The Christian Fright Peddlers*, Doubleday.)

Organization news:

- The National Association for the Advancement of White People (NAAWP), organized last year at Cincinnati to offset demonstrations by minority groups, is apparently in its death struggle. President William Miller, a former YMCA clerk who disclaimed any racial prejudice, is trying to dissolve the group because it was "taken over by the Ku Klux Klan." The group was challenged head-on last Spring by a Cleveland-based organization called the National Committee for Civic Responsibility.
- Two of the longest names have been taken by groups opposing left-wing speakers at Clarion State College, in Pennsylvania, and San Mateo Junior College, in California. They are, respectively: (1) The Committee for the Prevention of Communist Speakers and the Elimination of Communist Influence at Clarion State College and at other Colleges and Universities; and (2) The Taxpayers' Committee to Oppose Communist Speakers on Campus. The leader of the former is Dr. W. O. H. Garman, a Pittsburgh pastor who helps Billy James Hargis and former General Edwin Walker; the leader of the latter is former California Assemblyman Louis Francis, who has spearheaded several similar causes.
- Richard D. Morphew, Public Relations Director of the White Citizen's Councils, indirectly endorsed Goldwater in a talk with the *Washington Post*.
- The American Bar Association turned aside a proposal to support legislation liberalizing immigration laws after an attack on it by John C. Satterfield, recently a President of the ABA and more recently Chairman of the Coordinating Committee for Fundamental American Freedoms—the chief lobby against the civil rights legislation.
- The Independent Bar Association, avowedly more conservative than the ABA, heard an address attacking the Supreme Court by Warren Jefferson Davis, a California lawyer who recently co-authored *Dream Becomes Nightmare—The U. N. Today* with Bryton Barron, a John Birch Society leader.
- The Christian Crusade of Billy James Hargis announced during its convention in Dallas that on October 1 it will add 110 radio stations in Latin America. Broadcasts will be made in Spanish by Fernando Penabaz, a Cuban refugee who has been travelling with Hargis.
- A movement known as "Let Freedom Ring," which operates through recorded telephone messages on far-right topics, has been attacked by Senator Jacob Javits. An anonymous voice on the tapes heard in New York and New Jersey painted the New York Republican as a Communist sympathizer for opposing Goldwater's candidacy. The movement has cropped up in widely-scattered parts of the country with anonymous plugs for ultraright literature.
- Robert De Pugh, head of the Minutemen, explained to a *New York Times* reporter that his guerilla warfare group has helped double the number of private gun clubs in the country during past few years. He also disclosed that some members of his extremist group get weapons and ammunition free from the U. S. Department of Defense. This refers to the program by which the U. S. military distributes surplus weapons and live ammunition to

groups cooperating with the National Rifle Association. Congressman Henry Gonzalez (D-Texas) has been quizzing the Pentagon about tightening up the practice.

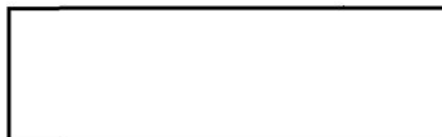
Democrats condemn extremist groups

The platform adopted by the Democratic National Convention contained the following paragraph, adopted without dissent: "We condemn extremism, whether from the right or left including the extreme tactics of such organizations as the Communist Party, the Klu Klux Klan and the John Birch Society." The action was in sharp contrast to the Republican Convention a few weeks before, where the subject was not officially mentioned and several moves to do so were defeated. Commentators recalled, by way of another contrast, that the Democrats refused at their 1924 convention to condemn the KKK.

NEWS & NOTES: A group of conservatives have announced intentions of putting their brand of satire on the stage this fall in New York . . . The Conservative Party of New York, which wanted to run Clare Booth Luce against GOP Senator Kenneth Keating and Democratic challenger Robert Kennedy, polled more than 140,000 votes two years ago with little-known candidates . . . News stories from Illinois remind that it has been 10 months since John R. Harrell disappeared with seven members of his family. He was a leader of the Christian Conservative Church . . . The Xerox company has received more than 8,000 letters criticizing its TV program about the United Nations, apparently stirred up by the John Birch Society . . . John Rousselot, Public Relations Director of the John Birch Society and a former Congressman, claimed that more than 100 delegates and alternates to the GOP Convention were members of the Society . . . Freedoms Foundation at Valley Forge is raising money for a memorial to holders of the Congressional Medal of Honor, working with the organization of living recipients of that highest military decoration . . . Billy James Hargis says, on the front cover of his latest *Christian Crusade* magazine: "I die a little each time I ask for money."

Group Research Report is published semi-monthly by Group Research, Inc., Room 422, 1404 New York Ave., N.W., Washington 5, D. C.

NONPROFIT ORG.



62-108790-6
b6
b7c

1 - Baumgardner
1 - Thompson

2-24-65

SAC, WFO

Director, FBI

COMINFIL OF GROUP RESEARCH INCORPORATED (GRI)
~~IS - C~~

MR

EE
The following information is contained in Bufiles concerning captioned organization:

This organization is located in Washington, D. C., and produces an "index" and "directory" of persons allegedly identified with conservative or right-wing groups. It was founded in approximately 1962 by John Wesley McCune, a former Executive Assistant to the Secretary of Agriculture. In 1941, McCune was identified as a member of the Washington Book Shop Association, an organization cited by the Attorney General. (62-108790)

As of June, 1963, GRI was backed by the Committee of Political Education (COPE) of the AFL-CIO and it was presumed that material produced by GRI would be used by COPE in an effort to discredit conservative groups and leaders. (62-108790-4)

Other officers of this organization as listed in the certificate of incorporation are: James H. Heller, 3916 Ingomar Street, Northwest, Washington, D. C.; [redacted] Washington, D. C.

Heller is a Washington, D. C., attorney who has represented Government employees discharged for security reasons and in 1961 he protested a proposed resolution of the D. C. Bar to require all applicants for admission to the Bar to take a noncommunist oath. As of 3-1-62 he was the Secretary of the National Capitol Area Civil Liberties Union. (61-190-960)

[redacted] also a Washington attorney, has offices at [redacted] Northwest, and is [redacted] the Federation of American Scientists (FAS) which is a scientific political action group organized in 1949. [redacted] was interviewed

MAILED 27
FEB 24 1965
COMM-FBI

- Tolson _____
- Belmont _____
- Mohr _____
- DeLoach _____
- Casper _____
- Callahan _____
- Conrad _____
- Felt _____
- Gale _____
- Rosen _____
- Sullivan _____
- Tavel _____
- Trotter _____
- Tele. Room _____
- Holmes _____
- Gandy _____

CWT:pdh
(5)

MCI-11

REC-40

62-108790-7
JHK

19 FEB 25 1965

66 MAR 10 1965

MAIL ROOM TELETYPE UNIT

b6
b7c

b6
b7c

Auth
FBI
Cor...

Letter to SAC, WFO

Re: **COMINFIL OF GROUP RESEARCH INCORPORATED (GRI)**

in 1963 by Bureau Agents at which time he advised that the FAS is opposed to the U. S. security program and is interested in clearing Dr. Robert Oppenheimer's name. (100-440657-1)

You are instructed to immediately institute a cominfil investigation of captioned organization. You should be guided by instructions contained in Section 87K of the Manual of Instructions. A report should be submitted to reach the Bureau within 45 days from the date of this letter together with your recommendation concerning further investigation of this organization.

FEDERAL BUREAU OF INVESTIGATION


REPORTING OFFICE WASHINGTON FIELD	OFFICE OF ORIGIN WASHINGTON FIELD	DATE 4/7/65	INVESTIGATIVE PERIOD 3/11/65 -- 4/2/65
TITLE OF CASE 7) COMINFIL OF ⁽¹⁾ GROUP RESEARCH, INCORPORATED, (GRI)		REPORT MADE BY SA JOSEPH E. KELLER	TYPED BY cam
		CHARACTER OF CASE IS-C	

REFERENCE: Bulet of 2/24/65.

- C -

ADMINISTRATIVE

The confidential informants who were contacted during April, 1965, who had no additional information are:

Informant	Date	Contacting Agent
	4/2/65	SA F. B. GRIFFITH, JR. b7D
	" 4/1/65	SA JOSEPH E. KELLER

M

1 X ext copy CIA - 11/10/66 - SJP/had

APPROVED <i>[Signature]</i> SPECIAL AGENT IN CHARGE	DO NOT WRITE IN SPACES BELOW
COPIES MADE: 5) Bureau () 2- Washington Field (100-44094)	<div style="border: 1px solid black; padding: 5px; display: inline-block;"> 103770 </div> <div style="margin-left: 20px;"> REC-7 EX-101 </div>
	12 APR '8 1965

DISSEMINATION RECORD OF ATTACHED REPORT			
AGENCY	6-2	ORF	OSF
REQUEST RECD.			
DATE FWD.	4-20-65		
HOW FWD.	<i>[Handwritten]</i>		
BY	<i>[Handwritten]</i>		

NOTATIONS
[Handwritten]
 INT. SECT
1 X ext copy CIA - 6/17/66 - woc/lies

58 APR 21 1965 *[Handwritten]*

WFO files disclose an AEAA investigation of CLAY LEE COCHRAN conducted in 1956 (Bufile 116-422186). The only usable information known to WFO regarding COCHRAN was reported in attached report.

GEORGE WERTZ RUCKER was investigated under the ERP program in August, 1958 (WFOfile 124-7614). Bureau transmitted to WFO various CSC investigative reports on 8/18/58, one such report, 7/16/58, CSC case serial number 5.22.58. 2575, which indicates a GEORGE RUCKER attended the Second National Convention of the Young Progressives of America (YPA), held Cleveland, Ohio, 11/24-27/49. YPA (Ohio) is cited in the HCUA Guide to Subversive Organizations and Publications. The information was not incorporated in the report since the source is not known to WFO.

Regarding [redacted] the SA's who interviewed him are DONALD A. GRUENTZEL, [redacted] 6/7, 19/63; SA's GRUENTZEL and PAUL E. TOWLE. 3/16/64. Initially [redacted] The interviews were regarding the case [redacted] (Bufile [redacted]). [redacted]

b3
b6
b7C
b7E

SA JOSEPH A. CONNORS, JR. conducted the suitable pretext on 2/3/65. The pretext used was for verification of employment of GEORGE RUCKER and to send him pertinent correspondence.

This report was classified "~~Confidential~~" because data reported by WF T-1, WF T-2 and WF T-5 could reasonably result in the identification of these sources of continuing value and compromise their future effectiveness thereof.

INFORMANTS

Identity of Source

File Where Located

WF T-1 is [redacted]
WF T-2 is [redacted]

b7D

WFO 100-44094

WF T-3 is [REDACTED]

100-1618-179

b7D

[REDACTED]
(continue to protect by
request)

WF T-4 is mail cover on
NATHAN GREGORY SILVER-
MASTER, 5515 30th Street,
N. W., Washington, D. C.
(investigative technique)

116-121057-14

WF T-5 is [REDACTED]

b7D

UNITED STATES DEPARTMENT OF JUSTICE
FEDERAL BUREAU OF INVESTIGATION

~~CONFIDENTIAL~~

Copy to:

Report of: SA JOSEPH E. KELLER
Date: 4/7/65

Office: Washington, D. C.

Field Office File #: 100-44094

Bureau File #:

Title: COMINFIL OF GROUP RESEARCH,
INCORPORATED, (GRI)

Character: INTERNAL SECURITY - C

Synopsis: Group Research, Incorporated (GRI) was formed on 1/30/62, Washington, D. C. GRI has current headquarters in Bond Building, 1404 New York Avenue, N. W., Washington, D. C. A Washington, D. C. newspaper article of 10/29/64, quotes WESLEY MC CUNE, GRI president as saying GRI is engaged in gathering information with respect to "right-wing" organizations; publishes a cumulative loose-leaf directory and a semi-monthly newsletter. In 1941 MC CUNE's name contained in records of National Federation For Constitutional Liberties (NFCL); his membership in Washington Bookshop Association (WBA) in 1944 noted. Both NFCL and WBA designated pursuant to Executive Order 10450. Confidential informants familiar with various phases of the Communist Party (CP) in the Washington, D. C. area had no information about GRI or individuals affiliated with the organization.

SKP - C -

~~CONFIDENTIAL~~

~~GROUP 1
Excluded from automatic
downgrading and
declassification~~

DETAILS: AT WASHINGTON, D. C.

I. ORGANIZATIONAL DATA

A. Origin

The records of the Superintendent of Corporations, District of Columbia Government, as checked on March 12, 1965, disclosed that as of January 30, 1962, Group Research, Incorporated (GRI) filed a Certificate of Incorporation, Number 620748 with that office. The certificate disclosed the following:

"We, the undersigned, all citizens of the United States and a majority citizens of the District of Columbia, of full age, desiring to associate ourselves as a corporation pursuant to the provisions of Title 29, Chapter 6 of the Code of Laws of the District of Columbia, 1951 Edition, do hereby certify as follows:

"1. The name or title by which such society shall be known in law is - Group Research, Incorporated.

"2. The term for which it is organized shall be perpetual.

"3. The particular business and objects of the society shall be: The objects of the corporation are exclusively educational and no other. In furtherance of those objects, the corporation will gather, collate and distribute information concerning organized efforts to affect governmental and economic policies.

"4. The number of its trustees, directors or managers for the first year of its existence shall be not less than three nor more than fifteen.

"5. The names and respective addresses, including street and number of the incorporators are:

"WESLEY MC CUNE - 328 Pennsylvania Avenue, S. E.,
Washington, D. C.

WFO 100-44094

"JAMES H. HELLER - 3916 Ingomar Street, N. W.,
Washington, D. C.

[REDACTED]
Washington, D. C.

b6
b7c

Comments regarding WESLEY MC CUNE, JAMES H. HELLER and [REDACTED] will be set forth later under the heading "PERTINENT INFORMATION REGARDING INDIVIDUALS AFFILIATED WITH GRI."

B. Current Headquarters

On March 15, 1965, [REDACTED] Shannon and Lucks Realtors, 17th and Eye Streets, N. W., Washington, D. C. was contacted. He advised GRI is currently renting office space (Rooms 422-425 and 432) in the Bond Building, 1404 New York Avenue, N. W., Washington, D. C. The organization commenced its lease on February 1, 1963, having been previously located at 328 Pennsylvania Avenue, S. E., Washington, D. C. The annual rental rate is \$3,720.

b6
b7c

C. Purpose

"The Evening Star," a Washington, D. C. daily newspaper, of October 29, 1964, page twelve and thirteen of Section A, contained an article written by LEE M. COHN, "Star" staff writer, entitled "Larson Heads New Group - Anti-Extremists Step up Campaign." The article mentions several organizations in existence which "Liberals and middle-roaders are organizing to fight harder and shout louder against right-wing 'extremists!'"

The article states that one such organization is "Group Research, Incorporated, a commercial firm established here (Washington, D. C.) early in 1962 and now more active than ever in research on the right wing."

"Its president WESLEY MC CUNE says he deliberately avoids the role of an activist in the fight against the right wing.

"We just lay out the facts objectively for friend or enemy to use, and let others supply the emotion," MC CUNE says, adding that he is delighted at establishment of the Larson Council to popularize facts about the right wing."

(The article mentions that **ARTHUR LARSON**, a law professor at Duke University, is the chairman of the newest and most ambitious organization, Council for Civic Responsibility, which is challenging the right wing. The Council's headquarters is in New York City.)

N.C.

"MC CUNE, now 48, is a former Washington newsman who also was executive assistant to Agriculture Secretary Charles F. Brannan in the Truman administration and was a public relations man for the Democratic National Committee in the early 1950's.

"He returned to his native Colorado in 1956 to direct public relations for the National Farmers Union.

"RALPH DE TOLEDANO, writing in the Oct. 24 issue of 'Human Events,' says Group Research was 'conceived by **EMANUEL MURAVCHIK**, an active Socialist' with ties to organized labor. MC CUNE says MURAVCHIK had nothing to do with Group Research.

U.S.A.

"Group Research, with a three-room office at 1404 New York Ave. NW, publishes a cumulative loose-leaf directory -- now containing about 2,000 pages -- with information on right-wing activities, organization and leadership.

"Special Reports"

"Included in the directory are 'special reports' in depth on such subjects as the Birch Society, right-wing finances and right-wing links of GOLDWATER and his associates.

"The directory's price varies widely, depending on the purchaser, and MC CUNE declines to give details.

"Group Research also publishes, at \$25 a year, a semi-monthly newsletter, 'Group Research Report.'

"The four-page newsletter summarizes special reports and provides information on current developments in the right wing.

"In a recent newsletter, for example, Group Research presents highlights of the special report on GOLDWATER, reports on libel suits filed by right-wingers and notes the huge sales of right-wing paper-back books.

"Group Research is a commercial operation, MC CUNE says, but the brochure describes it as a 'non-profit enterprise.' MC CUNE says this description has a special legal meaning under the District's corporation law.

"He says he draws a salary. If Group Research made a profit, he says, it would be plowed back into the business. He reports the firm lost money in 1962, was 'about even' in 1963 and will break even on a higher level of revenues and expenditures this year.

"Relies on Fees

"Group Research relies on fees and receives no contributions or subsidies, MC CUNE says.

"MC CUNE, like the Larson council, has difficulty defining the right wing and extremism. In his financial study, for example, he includes an admittedly wide spectrum of 'responsible' and 'irresponsible' elements, and what he calls 'some conventional organizations . . . which focus largely on extreme laissez-faire economics . . .'

"Group Research includes in the right-wing organizations that 'are linked basically by the fact that on economic and political issues they are significantly to the right of center.'

"In addition to avowed right-wing organizations like the Birch Society and the Christian Crusade, Group Research has included in the right wing such organizations as the

Freedoms Foundation and the National Right-to-Work Committee -- which would resent the label.

"Charges 'Blacklist'

"DE TOLEDANO, in the Oct. 24 issue of 'Human Events,' charges that Group Research is 'an open blacklister of conservatives.' He says the MC CUNE firm 'has been remarkably effective in making it more difficult for conservatives to be heard or to make a living.'

"MC CUNE replies that Group Research cannot promote blacklisting because 'we have no economic leverage or any jobs to give.'"

A Washington, D. C. Dun and Bradstreet report dated September 25, 1962, disclosed GRI was a nonprofit organization formed to provide subscribers (private) with information gained through research concerning public affairs and public organizations, primarily in the Washington, D. C. area. Also, GRI provides some information on pressure groups and lobbyist activities in Washington, D. C. The information gathered is disseminated through letters, telephone and private visits.

D. Current Personnel

[redacted] previously referred to, advised the regular office staff of GRI consists of WESLEY MC CUNE, another man and six female employees. He stated his office records disclose that MC CUNE is the organization's president; CLAY L. COCHRAN is the secretary. The Dun and Bradstreet report mentioned above states that MC CUNE has resided in the Washington, D. C. area for the past 18 years. His employment career has been connected with public information, having been employed by "Time" magazine, "Newsweek" magazine, "Kiplinger Newsletter" and the Democratic National Committee.

b6
b7c

The same report indicates that CLAY L. COCHRAN has resided in the Washington, D. C. area for the past ten or twelve years. He is not active in GRI and as of the date

WFO 100-44094

of the Dun and Bradstreet report, was employed by the National Headquarters of the American Federation of the Congress of Industrial Organizations (AFL-CIO).

GEORGE RUCKER is currently employed in the office of GRI, Washington, D. C.

(suitable pretext,
2/3/65)

The "1964 Polk's City Directory for Silver Spring, Bethesda Chevy Chase, Kensington, Takoma Park and Wheaton, Maryland" lists GEORGE RUCKER, 5311 Tuscarawas Road, Chevy Chase, Maryland, as an economist. His employment was shown as Group Research, Incorporated.

II. PERTINENT INFORMATION REGARDING
INDIVIDUALS AFFILIATED WITH GRI

WESLEY MC CUNE - (current president)

In 1941, the name "WESLEY MC CUNE, 3214 Newark Street, N. W., Washington, D. C." appeared in the active indices of the National Federation for Constitutional Liberties (NFCL).

(WF T-1, March, 1941)

NFCL has been designated pursuant to Executive Order 10450 by the Attorney General of the United States.

A Request for Report of Loyalty Data on applicants and appointees, dated May 27, 1948, executed by WESLEY MC CUNE when employed by the United States Department of Agriculture, disclosed he lived at 3214 Newark Street, N. W., from 1939 - 1941.

WFO 100-44094

In February, 1944, the name "WESLEY MC CUNE, #233, December 16, 1941, Garrett Park, Maryland" was set forth among other names as a member of the Washington Bookshop Association (WBA). The date following MC CUNE's name indicated the last payment of dues; the date of the last payment of dues did not necessarily mean that his WBA membership had expired.

(WF T-2, WF T-3,
2/18/44)

WBA is an organization designated by the Attorney General of the United States pursuant to Executive Order 10450.

The 1943 Washington, D. C. City Directory lists WESLEY MC CUNE and wife, LAURA L. MC CUNE, as residing at 19 Monmouth Avenue, Garrett Park, Maryland. Mr. MC CUNE's employment was listed as a reporter for "Newsweek" magazine.

The records of the House Committee on Un-American Activities (HCUA) disclosed that WESLEY MC CUNE, employed as an economist, United States Department of Agriculture with residence at 3214 Newark Street, N. W., Washington, D. C., was a member of the WBA. No date of membership was shown.

(IC
3/23/65)

b6
b7c

CLAY L. COCHRAN - (secretary, but mentioned as not active in GRI)

The records of the Credit Bureau, Inc., Washington, D. C., as checked on March 18, 1965, disclosed a report dated June 6, 1960, regarding Mr. COCHRAN. His residence

WFO 100-44094

address was shown as 114 Marthas Road, Alexandria, Virginia. It was indicated that he has been in the Washington, D. C. area since the latter 1950's, coming here from Norman, Oklahoma. His employment was shown as the AFL-CIO, Industrial Union Department, 815 16th Street, N. W., Washington, D. C. He was previously employed by the National Rural Electric Cooperative Association.

During April, 1946, WF T-4 advised that CLAY L. COCHRAN of the Economics Department, State University, Baton Rouge, Louisiana, had been in recent communication with NATHAN GREGORY SILVERMASTER. The significance of this contact was not known.

WF T-5 on March 20, 1947, advised that during March, 1947, CLAY COCHRAN, Economics Professor, University of North Carolina, was in Washington, D. C. and had made arrangements with NATHAN GREGORY SILVERMASTER to have lunch with him at the SILVERMASTER home.

ELIZABETH TERRELL BENTLEY, in testimony before the HCUA, United States House of Representatives, during 1948, identified NATHAN GREGORY SILVERMASTER as being the head of a communist espionage group composed of Government employees and officials which operated in Washington, D. C. during the 1940's. Miss BENTLEY was connected with such group as an espionage courier.

GEORGE RUCKER - (current office employee of GRI)

The records of the Credit Bureau, Inc., Washington, D. C., as of March 18, 1965, disclosed credit report concerning him dated June 23, 1963. This report disclosed that he was residing 5311 Tuscarawas Road, Chevy Chase,

WFO 100-44094

Maryland. His employment was indicated as being Group Research, Incorporated since November, 1962. He was previously employed on "Capitol Hill" as a economist working for a congressman.

JAMES H. HELLER - (listed as one of the incorporators, GRI)

The records of the Credit Bureau, Inc., Washington, D. C., as checked on March 18, 1965, disclosed a credit report concerning him dated May 5, 1959. His residence address was shown as 3916 Ingomar Street, N. W., Washington, D. C. His employment was listed as attorney, SHER, OPPENHEIMER and HARRIS, Room 1026, Woodward Building, Washington, D. C.

The 1963 Washington, D. C. "Yellow Pages," directory of the Chesapeake and Potomac Telephone Company lists JAMES H. HELLER as an attorney, Woodward Building, Washington, D. C.

[redacted] - (listed as one of the incorporators, GRI)

b6
b7c

The records of the Credit Bureau, Inc., Washington, D. C., as checked on March 18, 1965, disclosed a report dated July 18, 1960. It was reflected in the report that [redacted] residence was [redacted] Washington, D. C. His employment was shown as [redacted] engaged in the [redacted] N. W., Washington, D. C. He was formerly employed by the United States Court of Appeals.

[redacted] when interviewed by Special Agents of the FBI, in 1963 and 1964 in connection with another matter, advised that in addition to [redacted] he was also [redacted] Federation of American Scientists (FAS).

b6
b7c

"The FAS is a national organization of scientists concerned with the impact of science on national

~~CONFIDENTIAL~~

WFO 100-44094

and world affairs. It was formed in 1946, 'to meet the increasingly apparent responsibility of scientists in promoting the welfare of mankind and the achievement of a stable world peace.' All fields of natural and social science, engineering, and medicine are represented, and the membership also includes a limited number of non-scientists who support FAS aims."

III. MISCELLANEOUS

Confidential informants acquainted with various phases of the Communist Party (CP) and organizations in which the CP has an interest in the Washington, D. C. metropolitan area were contacted during April, 1965. These sources had no information concerning:

Group Research, Incorporated

WESLEY MC CUNE

CLAY L. COCHRAN

GEORGE RUCKER

JAMES H. HELLER

[REDACTED]

The records of the HCUA contained no additional information regarding subject organization or the individuals mentioned in this report.

(IC [REDACTED]
3/23/65)

~~CONFIDENTIAL~~



UNITED STATES DEPARTMENT OF JUSTICE
FEDERAL BUREAU OF INVESTIGATION

In Reply, Please Refer to
File No. 100-44094

Washington, D. C. 20535
April 7, 1965

Title COMINFIL OF GROUP
RESEARCH, INCORPORATED, (GRI)

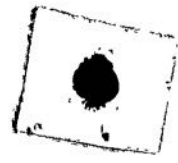
Character INTERNAL SECURITY - C

Reference Report by SA JOSEPH E. KELLER
at Washington, D. C. dated and
captioned as above.

All sources (except any listed below) whose identities
are concealed in referenced communication have furnished reliable
information in the past.

UNITED STATES GOVERNMENT

Memorandum



4/13

TO : DIRECTOR, FBI

FROM : SAC, WFO (100-44094) (C)

DATE: 4/7/65

SUBJECT: COMINFIL OF GROUP RESEARCH,
INC., (GRI)
IS-C
(OO:WFO)

2/2 4

ReBulet of 2/24/65.

Enclosed are five copies of the report of SA JOSEPH E. KELLER dated 4/7/65, at Washington, D. C. in the above captioned matter.

As will be noted, the enclosed report contains no known current information regarding possible communist infiltration of subject organization.

WFO contemplates no further investigation of GRI since confidential informants familiar with various phases of the Communist Party and organizations in which the Communist Party has an interest in the Washington, D. C. area had no information regarding subject organization or individuals affiliated with GRI.

W

In view of the above, subject case file is being closed.

REC-7

162-108790 9

EX-101

12 APR 8 1965

2 - Bureau (Encs 5) ENCLOSURE
1 - WFO

JEK:cam
(3)

INT-SECT



APR 21 1965

(Mount Clipping in Space Below)

RICHARD WILSON

Alas, No Humor Left in Politics

The hilarious findings of Democratically-supported Group Research, Inc., deserve some kind of special recognition. The Wellington Award might be suitable.

At the height of his popularity, a guest at a reception in London approached Lord Wellington and said, "Mr. Smith, I believe."

"If you believe that, sir," Wellington responded, "you will believe anything."

The Wellington Believe-Anything Award is hereby conferred upon Mr. Wesley McCune, research director of Group Research, Inc., jointly with John Bailey, chairman of the Democratic National Committee.

Mr. Bailey's contribution is financial. He put up \$10,000 in Democratic National Committee funds to help Mr. McCune continue research for a right-wing roster which brackets Dwight D. Eisenhower, J. Edgar Hoover, Cardinal Cushing, both Sens. Everett M. Dirksen and Paul Douglas of Illinois along with Gerald L. K. Smith, George Lincoln Rockwell, the John Birch Society's Robert Welch, and Gen. Edwin Walker.

Alas, there is no humor left in politics. There are unmistakable signs that Group Research thinks there is some relationship between the above disparate people. This is largely because people like Eisenhower, Hoover, and Everett M. Dirksen have received awards from the Freedom Foundation, a group which gives wholesale honors for those who do patriotic services by word or deed.

Why should there be such a blacklist of sinister figures on the right? Chairman Bailey has explained this. Group Research, he wrote, has systematically kept track of the activities of the radical right and makes its services available to organizations with "right-wing problems" which he listed as the League of Women Voters, the National Education Assn., the Parent Teachers Assn. of America, the National Council of Churches, and the AFL-CIO.

The roster of what Bailey calls the "radical right" also includes Theodore M. Hesburgh, president of Notre Dame University, Billy Graham, Norman Vincent Peale, Cardinal Spellman, and the Rev. Edward L. R. Elson, pastor of the church in Washington attended by President Eisenhower. Also Gen. Omar Bradley, Ozzie and Harriet Nelson, Arthur Godfrey and Jackie Robinson.

Now, extremism, as we all know, is not confined to the radical right. There is a radical left, and quite a few Communists or Communist sympathizers are listed by Group Research, Inc., including Elizabeth Bentley who blew the lid off the Alger Hiss case.

But Gus Hall, the secretary and top kick of the Communist Party, is not listed. Mr. Hall lately has been proclaiming the intention of the Communist Party to come out in the open as the result of a recent Supreme Court decision that individual Communists don't have to incriminate themselves in writing by registering with the federal government. But it apparently is not necessary to call his record to the attention of the PTA.

All of this is explained by Mr. McCune and Mr. Bailey as a matter-of-fact compilation of the records of various people involved in the controversies of politics so that the unaware will not be caught napping by listening to some speech by Eisenhower or Cardinal Cushing without knowing the facts about them. Bailey responded like an angered angel when Sen. Thurston Morton, a not-so-radical Republican, accused him of promoting a smear campaign.

Sen. Morton got hold of a roster of the radical right and has been reciting its hilarities to assorted audiences, including the U.S. Senate, where he was largely ignored.

In fact, Group Research's activities were reported in this column more than a year ago with about as much effect on Mr. Bailey as Sen. Morton's recent speeches.

As late as last August, at least, Chairman Bailey was plugging Group Research's newsletter, but lately the blacklist has been withdrawn from circulation like some of the writings of the John Birch Society's Robert Welch.

- Mr. Tolson _____
- Mr. Belmont _____
- Mr. Mohr _____
- Mr. DeLoach _____
- Mr. Casper _____
- Mr. Callahan _____
- Mr. Conrad _____
- Mr. Felt _____
- Mr. Gale _____
- Mr. Rosen _____
- Mr. Sullivan _____
- Mr. Tavel _____
- Mr. Trotter _____
- Tele. Room _____
- Miss Holmes _____
- Miss Gandy _____

(Indicate page, newspaper, city and state.)

II-6 Los Angeles Times

Los Angeles, Calif.

+ 62-107790-1
NOT RECORDED
184 DEC 7 1965

Date: 11/25/65
Edition: Daily
Author: Richard Wilson
Editor: Nick B. Williams
Title:

Character:
or
Classification:
Submitting Office: LOS Angeles

Being Investigated

5 file 62-107790

b6
b7c

b6
b7c

b6
b7c

UNITED STATES GOVERNMENT

Memorandum

TO : The Director

DATE: 10-22-65

FROM : N. P. Callahan

SUBJECT: The Congressional Record

Pages 28948-28951. Senator Morton, (R) Kentucky, spoke concerning a list compiled by an organization known as Group Research, Inc. He pointed out that he discussed this matter in a speech in Cleveland last week. He stated "I expressed surprise that funds collected by the Democratic National Committee were used to finance such a smear campaign, and that Democratic National Chairman John Bailey was sending out letters urging support for the organization conducting the smear and recommending that the blacklists be made available in such places as our schools and churches. - - - Mr. Bailey's

obvious purpose was to educate our children and our adult citizens alike on the persons considered dangerous to our Republic. - - - FBI Director J. Edgar Hoover, Dr. Milton Eisenhower - - -"

Original file 100-200000-25

100-108770-
NOV 1965

170 XEROX
NOV 13 1965

NOV 8 1965

PERS. REC. UNIT

In the original of a memorandum captioned and dated as above, the Congressional Record for 10-21-65 was reviewed and pertinent items were marked for the Director's attention. This form has been prepared in order that portions of a copy of the original memorandum may be clipped, mounted, and placed in appropriate Bureau case or subject matter files.

Tolson _____
 Belmont _____
 Mohr _____
 DeLoach _____
 Casper _____
 Callahan _____
 Conrad _____
 Felt _____
 Gale _____
 Rosen _____
 Sullivan _____
 Tavel _____
 Trotter _____
 Tele Room _____
 Holmes _____
 Gandy _____

Right-Wing Groups Gain in Drawing Financial Aid

By DONALD JANSON

Special to The New York Times

LOS ANGELES, June 25—

Financial support of the nation's rightwing continues to grow, with a healthy portion of the dollars coming from big business.

A case to be heard in Superior Court of Los Angeles County Monday illuminates the wide-ranging support some corporation executives give to the dissemination of ultraconservative political and economic views.

Three conservatives are accused of conspiracy to libel Senator Thomas H. Kuchel, a moderate Republican who has been an outspoken foe of extremists.

One of the defendants is John F. Fergus, until recently a public relations man here for the Schick Safety Razor Company and Eversharp, Inc.

The president and chief executive officer of Eversharp and Schick, a division of Eversharp, is Patrick J. Frawley Jr. He is also chairman of the board of Eversharp and of Technicolor, Inc.

Hired to Make Speeches

Mr. Frawley testified before the grand jury that indicated Mr. Fergus that he had hired him in 1962 "to make speeches on free enterprise and against Communism." In addition, he said, Schick has spent hundreds of thousands of dollars in recent years to sponsor right-wing radio and television programs and to advertise in ultraconservative magazines. These expenditures are continuing.

An exhaustive study by Group Research, Inc., using the public portions of reports by tax-exempt groups to the Internal Revenue Service and other data, produced an estimate that conservative organizations, from the John Birch Society to the National Defense Committee to the Daughters of the American Revolution, spent \$30 million in

This represented a growth of 17 per cent in income over the previous year, and the continuation of a seven-year trend.

Officials of the Washington research organization, which often surveys right-wing activities, said this week that figures available so far for 1964 indicated the trend was continuing.

Birch Income Doubled

The Birch Society, for example, doubled its income last year, from \$1.6 million in 1963 to \$3.2 million in 1964. It is now conducting an intensive fund-raising drive for next year's elections.

Christian Crusade, the Tulsa-based anti-Communist organization of the Evangelist, Billy James Hargis, advanced last year to \$834,800 from an income of \$677,200 in 1963.

The Christian Anti-Communism Crusade of the Australian physician, Dr. Fred C. Schwarz, had an income last year of \$612,100, compared with \$573,800 in 1963.

Americans for Constitutional Action, which rates Congressmen according to their degree of conservatism, reported income of \$187,400, compared with \$84,900 a year earlier.

This year, two new groups with enough fund-raising potential to worry the Republican party have entered the picture.

The American Conservative Union expects to have an operating bankroll of \$400,000 soon. It said this week it had half of it in hand.

\$2 Million Is Sought

The Free Society Association, flying the colors of Barry Goldwater, is seeking \$2 million to begin its "educational" activities.

If big business shows interest in these newest endeavors and continues the trend of mounting donations elsewhere in the right-wing spectrum, the impact could be felt at state, local and national levels in the off-year elections in 1965.

Group Research said, however, that not all the \$30 million reported in its study came from a few billionaires or businessmen: Much of it—there is no way of telling just how much—comes in dimes and dollars from housewives and men of modest means.

The study, however, shows a pattern of consistent contributions in recent years from a cluster of wealthy industrial families, more and more of whom are setting up foundations as tax-exempt arms of their business for disbursing grants.

A similar study by the Anti-Defamation League of B'nai B'rith, published last fall, said these right-wing benefactors now included more than 100 business concerns, more than 70 foundations and about 250 individuals.

Pattern Is Varied

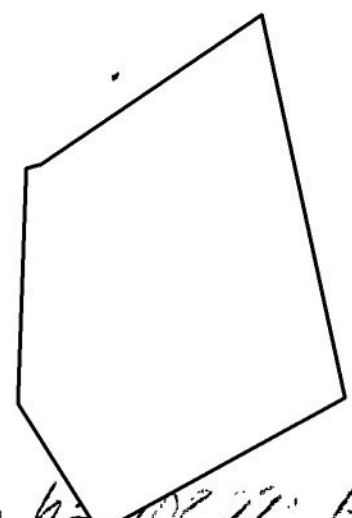
Many scatter largesse among a number of ultraconservative groups. Others pick a favorite or two and stick with them from year to year.

Names that recur frequently in the Group Research study include Milliken, Pew, Hunt, Crail, Frawley, Gray and Simes.

Olive Simes and Hope Gray are principals of the Penthouse Trust in Boston and substantial supporters of the Birch Society.

Robert Milliken heads the Deering Milliken textile concern. The Deering Milliken Foundation has given the ultraconservative Freedom School in Colorado as much as \$100,000 at a time. The company has sent groups of its executives there for indoctrination in economic theory.

J. Howard Pew, chairman of the Sun Oil Company, has contributed \$1 million to the Christian Freedom Foundation, which calls urban renewal "Marxism" and has proposed that Communist nations "be driven from the U.N." Mr. Pew is on the editorial advisory committee of American Opinion, the Birch Society magazine, and is a stockholder in its publisher, Robert Weisk, Inc.



62-10277-14
 The Washington Post and
NOT RECORDED
 26 Washington Daily News
 The Evening Star
 New York Herald Tribune
 New York Journal-American
 New York Daily News
 New York Post
 The New York Times
 The Baltimore Sun
 The Worker
 The New Leader
 The Wall Street Journal
 The National Observer
 People's World
 Date _____

JUN 28 1965

file

b6
 b7c

H. L. Hunt, the Texas oil billionaire, has given \$3 million to Life Line and its predecessor in right-wing radio programs, Facts Forum.

Joe Crall is president of the Coast Federal Savings and Loan Association here, which operates a Free Enterprise Bureau budgeted at a quarter of a million dollars a year. Its purpose is "to preserve a climate of economic opinion favorable to Americanism."

Patrick Frawley contributes to the right-wing movement in many ways. He told the grand jury he had instructed Mr. Ferguson in his speeches to "stick to the approach made by Dr. Fred Schwarz."

Mr. Frawley has given Dr. Schwarz's Christian Anti-Communist Crusade, which has headquarters in Long Beach, Calif., up to \$5,000 at a time.

He has served on steering committees for its "schools of anti-Communism" around the country, and has sponsored television programs of rallies costing up to \$50,000.

Robert H. W. Welch Jr., founder of the Birch Society, has praised the Schwarz organization for doing "a superb job" of anti-Communist "education."

Schick Ads Cited

Last fall, Schick took large advertisements in major newspapers across the country to present a Schwarz message saying that both China and the existence "as a likely method for destroying America."

The advertisements solicited orders for a book that would outline to any citizen of the United States "the Communist threat to my American heritage."

It also praised the ultraconservative Cardinal Mindszenty Foundation of St. Louis, often described as a Roman Catholic offshoot of the Protestant-led Christian Anti-Communism League.

Mr. Frawley has given the foundation as much as \$10,000 at a time. Last year he and Father Richard Ginder, former member of the Birch Society's national council, received "Paul Revere" awards from the foundation.

John Fred Schlafly Jr., a Schwarz backer, serves on the board of directors of both the foundation and Eversharp. His wife, Phyllis, is research director of the foundation and author of the right-wing paperback "A Choice Not an Echo," which has been given credit for helping to bring the Republican Presidential nomination to Mr. Goldwater last year.

Mr. Frawley regularly supports right-wing publications by advertising in them. For example, the qualities of Schick razors are explained in many issues of The Wanderer, which

is published in St. Paul and in William S. Buckley's National Review.

The Los Angeles Industrialist was a member of the Committee for the Monroe Doctrine, organized in 1963 by a former Communist, Marvin Liebman of New York, to protest the "dangerous concessions being offered by President Kennedy to Khrushchev concerning the Cuban situation."

He has contributed to Americans for Constitutional Action, whose scorecard on the relative conservatism of Congressmen was used by then Maj. Gen. Edwin A. Walker in his "Pro-Blue" troop indoctrination program. The right-wing Americanism Educational League gave Mr. Frawley its "American of the Year" award in 1963.

Last month, Schick sponsored an hour-long color telecast of "Freedom Foundation's first annual patriotic ball" in Beverly Hills. Five nights a week since last Sept. 28, radio listeners throughout the country have been offered a five-minute program called "Washington Report."

Company Pays Cost

The program, now on 900 stations, is produced by the American Security Council. Schick pays the production costs of \$20,000 a month. The program is scheduled, for the time being, to continue indefinitely.

One of the "Washington Report" programs heard here this week was an attack by former Representative Walter H. Judd of Minnesota on campus teachers and trade with Communists.

The council was formed a decade ago to serve industry by screening prospective employees for patriotism and by keeping members informed of cold war developments.



Patrick J. Frawley Jr. testified in a libel case against John F. Ferguson.

Right-Wing Groups Gain in Drawing

By DONALD JANSON
Special to The New York Times

LOS ANGELES, June 25—Financial support of the nation's rightwing continues to grow, with a healthy portion of the dollars coming from big business.

A case to be heard in Superior Court of Los Angeles County Monday illuminates the wide-ranging support some corporation executives give to the dissemination of ultraconservative political and economic views.

Three conservatives are accused of conspiracy to libel Senator Thomas H. Kuchel, a moderate Republican who has been an outspoken foe of extremists.

One of the defendants is John F. Fergus, until recently a public relations man here for the Schick Safety Razor Company and Eversharp, Inc.

The president and chief executive officer of Eversharp and Schick, a division of Eversharp, is Patrick J. Frawley Jr. He is also chairman of the board of Eversharp and of Technicolor, Inc.

Hired to Make Speeches

Mr. Frawley testified before the grand jury that indicated Mr. Fergus that he had hired him in 1962 "to make speeches on free enterprise and against Communism." In addition, he said, Schick has spent hundreds of thousands of dollars in recent years to sponsor right-wing radio and television programs and to advertise in ultraconservative magazines. These expenditures are continuing.

An exhaustive study by Group Research Inc., using the public portions of reports by tax-exempt groups to the Internal Revenue Service and other data, produced an estimate that conservative organizations, from the John Birch Society to the National Defense Committee of the Daughters of the American Revolution, spent \$30 million in 1963.

This represented a growth of 7 per cent in income over the previous year, and the continuation of a seven-year trend.

Officials of the Washington research organization which often surveys right-wing activities, said this week that figures available so far for 1964 indicated the trend was continuing.

Birch Income Doubled

The Birch Society, for example, doubled its income last year from \$1.6 million in 1963 to \$3.2 million in 1964. It is now conducting an intensive fundraising drive for next year's elections.



Patrick J. Frawley Jr. testified in a libel case against John F. Fergus.

Financial Aid

no way of telling just how much comes in dimes and dollars from housewives and men of modest means.

The study, however, shows a pattern of consistent contributions in recent years from a cluster of wealthy industrial families, more and more of whom are setting up foundations as tax-exempt arms of their business for disbursing grants.

A similar study by the Anti-Defamation League of B'nai B'rith, published last fall, said these right-wing benefactors now included more than 100 business concerns, more than 70 foundations and about 250 individuals.

Pattern Is Varied

Many scatter largesse among a number of ultraconservative groups. Others pick a favorite or two and stick with them from year to year.

Names that recur frequently in the Group Research study include Milliken, Pew, Hunt, Crail, Frawley, Gray and Simes.

Olive Simes and Hope Gray are principals of the Penthouse Trust in Boston and substantial supporters of the Birch Society.

Robert Milliken heads the Deering Milliken textile concern. The Deering Milliken Foundation has given the ultraconservative Freedom School in Colorado as much as \$100,000 at a time. The company has sent groups of its executives there for indoctrination in economic theory.

J. Howard Pew, chairman of the Sun Oil Company, has contributed \$1 million to the Christian Freedom Foundation which calls urban renewal "Marxism" and has proposed that Communist nations be driven from the U.N. Mr. Pew is on the editorial advisory committee of American Opinion, the Birch Society magazine, and its stockholder in its publisher Robert Welch, Inc.

H. L. Hunt, the Texas oil billionaire, has given \$3 million to Life Line and its predecessor.

Christian Crusade, the Tulsa-based anti-Communist organization of the Evangelist, Billy James Hargis, advanced last year to \$834,800 from an income of \$677,200 in 1963.

The Christian Anti-Communism Crusade of the Australian physician, Dr. Fred C. Schwarz, had an income last year of \$612,100, compared with \$573,800 in 1963.

Americans for Constitutional Action, which rates Congressmen according to their degree of conservatism, reported income of \$187,400, compared with \$34,900 a year earlier.

This year, two new groups with enough fund-raising potential to worry the Republican party have entered the picture.

The American Conservative Union expects to have an operating bankroll of \$400,000 soon. It said this week it had half of it in hand.

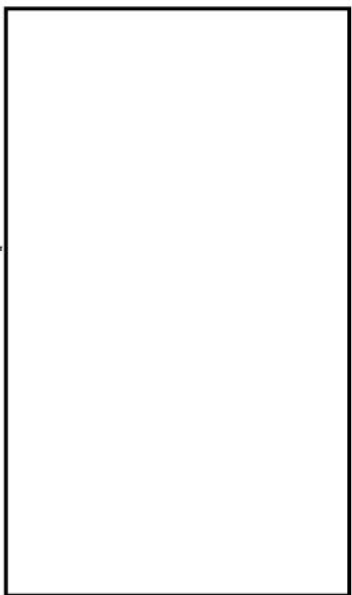
\$2 Million Is Sought

The Free Society Association, flying the colors of Harry Goldwater, is seeking \$2 million to begin its "educational" activities.

If big business shows interest in these newest endeavors and continues the trend of mounting donations elsewhere in the right-wing spectrum, the impact could be felt at state, local and national levels in the off-year elections in 1968.

Group Research said, however, that not all the \$30 million reported in its study came from a few billionaires or businessmen. Much of it—there is

- Tolson _____
- Belmont _____
- Mohr _____
- DeLoach _____
- Casper _____
- Callahan _____
- Conrad _____
- Felt _____
- Gale _____
- Rosen _____
- Sullivan _____
- Tavel _____
- Trotter _____
- Tele Room _____
- Holmes _____
- Gandy _____



b6
b7c

- The Washington Post and Times Herald _____
- The Washington Daily News _____
- The Evening Star _____
- New York Herald Tribune _____
- New York Journal-American _____
- New York Daily News _____
- New York Post _____
- The New York Times pg 22
- The Baltimore Sun _____
- The Worker _____
- The New Leader _____
- The Wall Street Journal _____
- The National Observer _____
- People's World _____
- Date 6-28-65

71-62-10579
5 PAJ

NOT RECORDED
46 JUL 8 1965

50 JUL 8 1965



ENCLOSURE

62-10597