



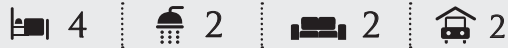
Urban



Perry Homes

Indicative Artist Impression - Seaspray Facade

Urban 26



DESIGNER

Width: 11.4m Depth: 22.00m

Area Sizes

Living Total	190.25m ²
Garage	37.63m ²
Porch	1.67m ²
Terrace	15.38m ²

Total Area **244.93m² / 26.36sq**

DESIGNER PLUS

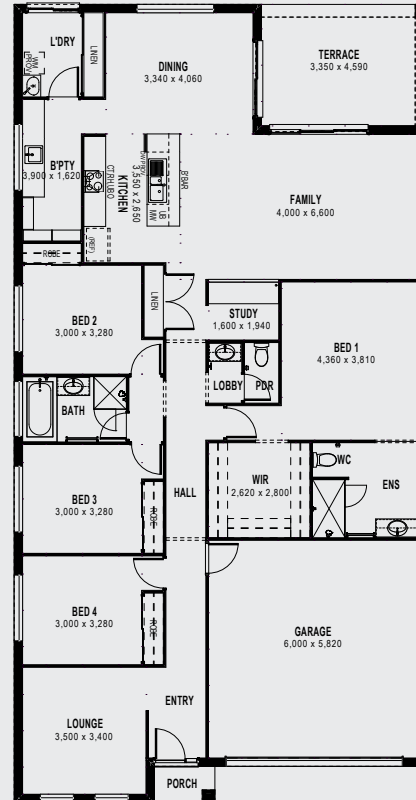
Width: 11.4m Depth: 22.00m

Area Sizes

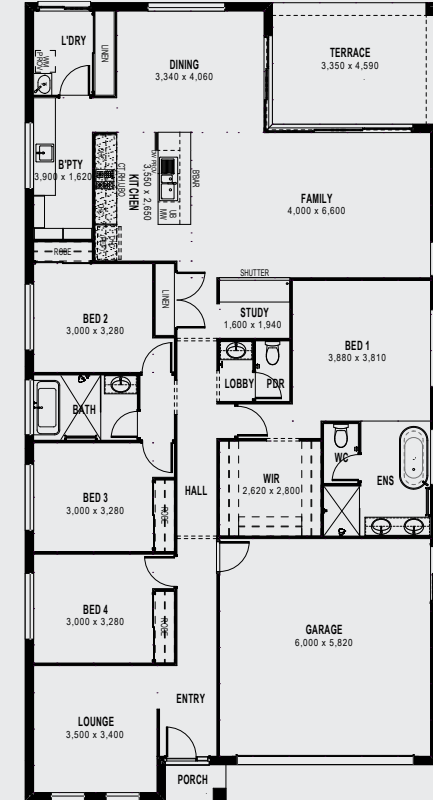
Living Total	190.25m ²
Garage	37.63m ²
Porch	1.67m ²
Terrace	15.38m ²

Total Area **244.93m² / 26.36sq**

DESIGNER - 244.93m² / 26.36sq



DESIGNER PLUS - 244.93m² / 26.36sq



Perry Homes
Quality homes. Exceptional value.



Perry Homes (Aust.) Pty Ltd, 49 Minjungbal Drive, Tweed Heads South, NSW 2486
Phone: (07) 5569 9400 perryhomes.com.au



Images, plans and dimensions in this brochure, do not necessarily accurately depict the finished product as on display. Some images may show features which are not supplied by Perry Homes, or outside our standard range, but have been used for display purposes only. Plans, prices and inclusions are subject to variation without notice. Dimensions are approximate only. For more details please consult with your sales consultant. The copyright on all floor plans is owned by Perry Homes (Aust.) Pty Ltd. These floor plans may not be reproduced, copied or dealt with in any manner which infringes the exclusive rights of Perry Homes (Aust.) Pty Ltd. as prescribed by the Copyright Act 1968 without the express written authorisation of Perry Homes (Aust.) Pty Ltd. © Perry Homes (Aust.) Pty Ltd ABN 53 090 866 630. QBCC Act Lic. No. 718748. NSW Lic. No. 110970C. March 2023. E33948