



**GBSA**  
Gyeonggido Business & Science Accelerator

# Making Businesses Prosper Promoting Beneficial Technologies

Gyeonggido Business &  
Science Accelerator

[www.gbsa.or.kr](http://www.gbsa.or.kr)





A Business Supporting Organization that  
Offers Customized Services and Leads the Economic &  
Scientific Development of Gyeonggi-do,

## Gyeonggi-do Business & Science Accelerator

# Gyeonggi-do Business & Science Accelerator

Gyeonggi-do Business &  
Science Accelerator

## CONTENTS

### Gyeonggi-do Business & Science Accelerator

About GBSA	10
History GBSA	11
Value System Map	12
Organizational Structure and Functions	13
Status of Gyeonggi-do	14
Gwanggyo Techno Valley	16
Pangyo Techno Valley	17

### Business Service

#### **I. Fostering global SMEs through customized support at each growth stage**

01 Startup/Venture support	20
02 Supporting the growth of SMEs	22
03 Support for export and marketing	24

#### **II. Creation of new industries and jobs through scientific and technological innovation**

04 Leading the 4th Industrial Revolution	26
05 Fostering the bio-health industry	28
06 Innovation and advancement of clusters	30

#### **III. Realization of customer value through on-site communication**

07 Advancement of regional and specialized industries	32
08 Policy research on businesses, science and technology	34

### GBSA Local Offices 36

### Overview of Gyeonggi Overseas Offices 38



Meaning constant growth toward  
innovation and future.

Symbolizing business, scientific  
technology, leadership

It expresses the symbol of the innovative leadership of GBSA,  
which plays a pivotal role in creating new value for economic development  
of Gyeonggi-do and vigorously marches toward the world and future with  
provincial companies.





A Business Supporting Organization that Offers Customized Services and Leads the Economic & Scientific Development of Gyeonggi-do,

## Gyeonggido Business & Science Accelerator



Finding a new growth engine for the future of Gyeonggi-do. This is the goal of GBSA.

In order to achieve this, GBSA is fully focusing on new industries of science and technology with constant challenge and strong will.

From the development of cutting-edge technologies such as AI and robots to exploration of the global market for the bio-health industry, finding the future value of Gyeonggi-do through our efforts and technologies.

**GBSA will make sure to achieve these goals!**



Fostering global SMEs through customized support at each growth stage



Creation of new industries and jobs through scientific and technological innovation



Realization of customer value through on-site communication

# Gyeonggido Business & Science Accelerator





# Good to Great

Promoting small but strong enterprises to go global

GBSA is leading the innovation and growth of startups and SMEs. To make it easy for good ideas to lead to business, GBSA supports everything from discovering promising solutions to nurturing startups and helping re-challenges. To build a better corporate environment and create a shared growth ecosystem for mutual cooperation, GBSA's sincere efforts will continue.





# Look for Ways

We create new growth engines  
through future technology  
development

GBSA is leading the 4th industrial revolution and fostering specialized industries in Gyeonggi-do. These efforts are as follows: providing field-oriented support to foster Gyeonggi-do's specialized industry; developing advanced technologies such as AI and robots, and fostering future industries; and supporting the commercialization of biotechnology.





# get better Soon

Expanding the market  
beyond the region  
to the world

GBSA opens the door to the overseas market so that the promising SMEs in Gyeonggi-do can grow into global enterprises.

Based on the efforts of Gyeonggi Business Center and Textile Marketing Center, we are supporting the development of overseas markets that are suitable for the unique characteristics of each company. In the digital economy era, GBSA strives to diversify export markets by preemptively responding to changes in the global market environment.





**To support new challenges and advance towards tomorrow of innovative growth, GBSA will always be with you.**

**GBSA provides customized support for businesses to drive economic and scientific development in Gyeonggi-do**

From discovering startup ideas to commercialization and pioneering overseas markets, GBSA's comprehensive and customized support includes scientific and technological R&D support, as well as fostering the bio industry and advancing local industries.

In addition, in the New Normal era, by creating a foundation for corporate growth and innovation, we are working hard to build a sustainable industrial ecosystem in Gyeonggi-do.

In response to the waves of change, GBSA will promote preemptive and active support for companies in line with industry paradigm change, laying the foundation for future growth of local businesses.

GBSA will work hard to open up a brand-new future for Gyeonggi-do and continue to earn your trust. Your active support and encouragement will be a great help to GBSA.



# Hope Together! Grow Together!



## 1997

Gyeonggi Small and Medium Business Foundation (GSMB) is permitted to establish (June 24, 1997. Head of the Small and Medium Business Administration)

## 1999-2005

**1999**  
▷ The name of GSMB is changed to Gyeonggi Small & Medium Business Center (GSBC)

**2001**  
▷ GSBC is opened at Gwanggyo

**2003**  
▷ North Regional Support Center is opened

**2005**  
▷ GBC\* Mumbai (India) is opened  
▷ Awarded for excellence in supporting small and medium-sized enterprises (Prime Minister)  
▷ **Gyeonggi Bio Center is opened**

## 2006-2009

**2006**  
▷ Gyeonggi Pharmaceutical Research Center is opened  
▷ GBC Moscow (Russia) is opened

**2007**  
▷ Gyeonggi R&DB Center is completed

**2008**  
▷ Gyeonggi Science and Technology Center under the Gyeonggi Development Institute is opened  
▷ GBC Kuala Lumpur (Malaysia) is opened

**2009**  
▷ GBC LA (USA) is opened

## 2013-2016

**2013**  
▷ GTC Shanghai (China) is opened

**2014**  
▷ The Cluster Innovation Headquarters is established, and integrated operations begin for the Gyeonggi Bio Center and the Natural Drug Research Center

**2016**  
▷ GBC Guangzhou (China) is opened  
▷ GBC Ho Chi Minh (Vietnam) is opened

## 2017-2018

**2017**  
▷ **Gyeonggido Business & Science Accelerator (GBSA) is launched** (GSBC and GSTEP are integrated)  
▷ GBC Tehran (Iran) is opened  
▷ GBC Chongqing (China) is opened

**2018**  
▷ GBC Nairobi (Kenya) is opened



## 2011-2012

**2011**  
▷ Awarded for excellence in supporting small and medium-sized enterprises (President)  
▷ GTC\*\* LA (USA) is opened  
▷ GBC Shenyang (China) is opened  
▷ Pan-gyo Techno Valley Support Headquarter(Cluster Innovation Headquarters) is established

**2012**  
▷ GTC New York (USA) is opened  
▷ Pangyo Global R&D Center is completed

## 2010

▷ West Regional Support Center is opened  
▷ GBC Shanghai (China) is opened  
▷ **Gyeonggi Institute of Science & Technology Promotion (GSTEP) is established** (Integration of the three institutions: Science and Technology Center, Gyeonggi Bio Center and Gyeonggi Pharmaceutical Research Center)  
▷ North Support Center is established (Headquarter of the Regional Specialized Industry)  
▷ South Regional Support Center is opened

## 2020

▷ GBC Bangkok (Thailand) is opened  
▷ GBSA receives a commendation for promoting startups (President)  
▷ GBSA receives a commendation for creating jobs (President)

## 2022

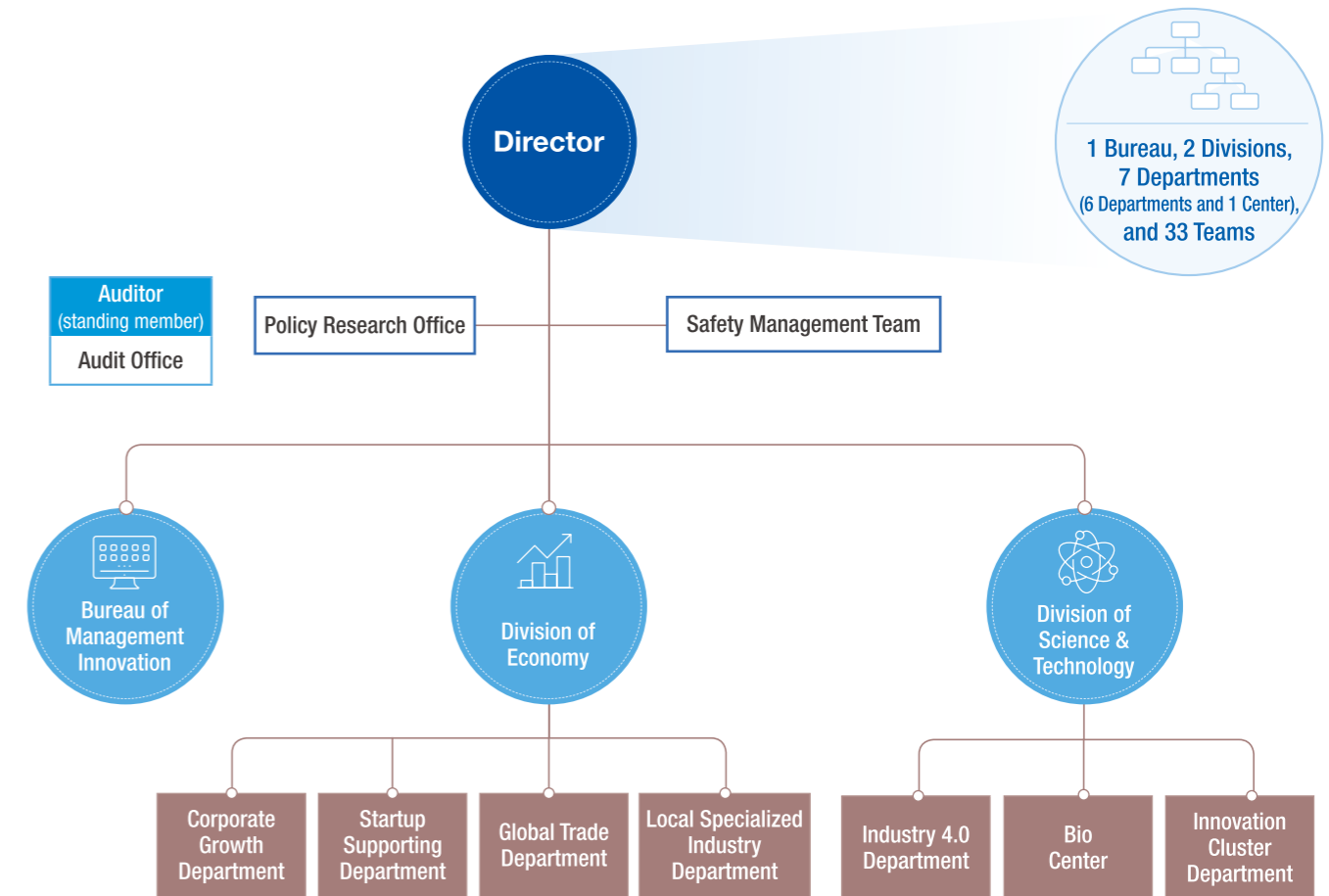
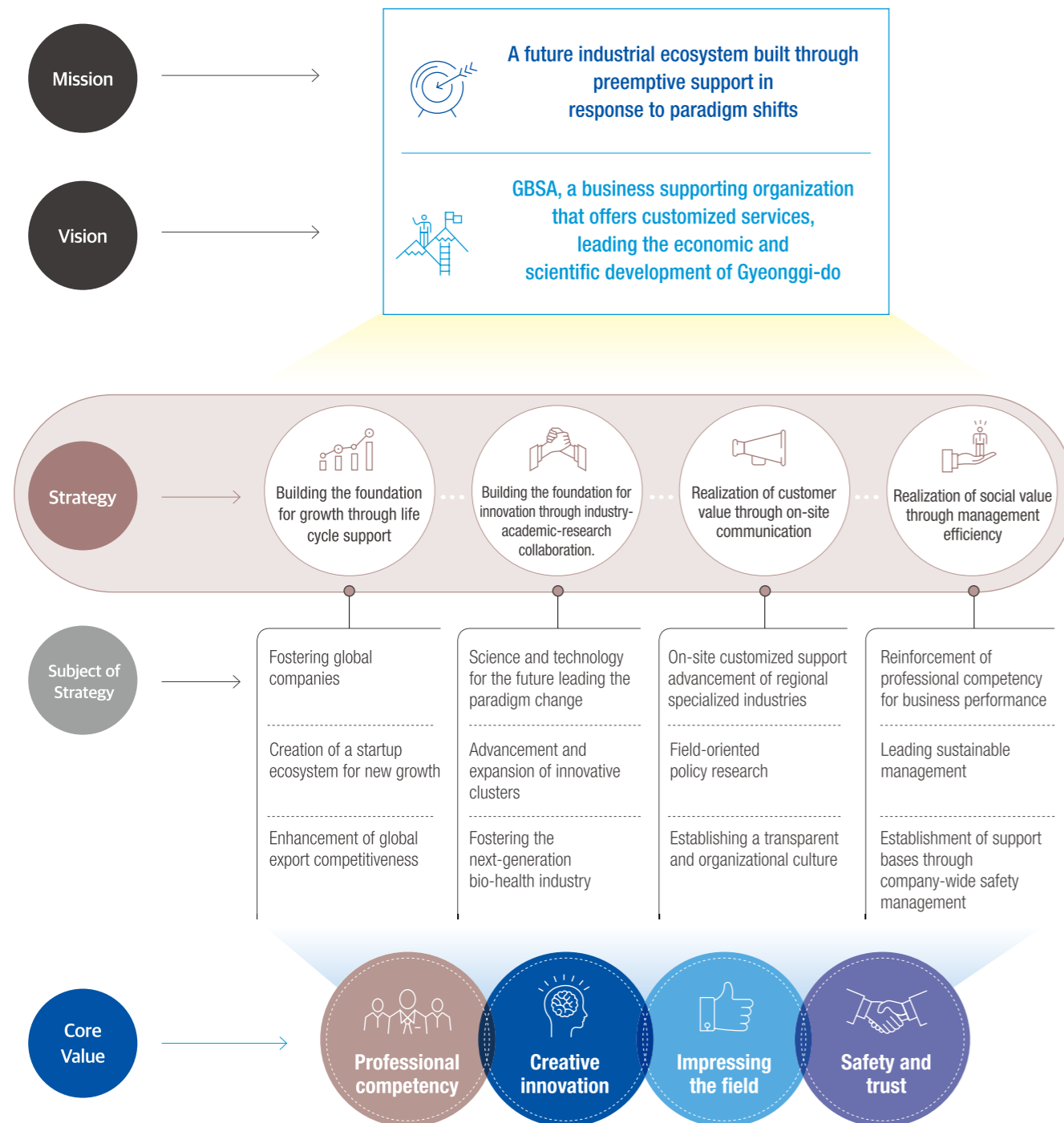
▷ East Regional Support Center is opened



\* GBC : Gyeonggi Business Center  
\*\* GTC : Gyeonggi Textile Marketing Center



# When economy and science work together, businesses can prosper.



- Corporate Growth Department**
  - Supporting the growth of Gyeonggi-do's major companies and responding to the demand in business fields
  - Fostering talents and creating an ecosystem for future industries
- Startup Supporting Department**
  - Fostering innovative startups at each growth stage and operating efficient infrastructure
  - Vitalizing on/offline startup platforms and supporting startups through public and private cooperation
- Global Trade Department**
  - Establishment of infrastructure for global expansion and cooperation with overseas networks
  - Digitized support of export marketing through convergence of channels on and offline
- Local Specialized Industry Department**
  - Fostering future industries for the local economy and operating joint projects between cities and counties
  - Fostering specialized industries such as furniture and textiles, providing customer-focused support to overcome challenges
- Industry 4.0 Department**
  - Strengthening corporate competitiveness through technological innovation and fostering innovative talents
  - Realizing the future social value for the 4th industrial revolution
- Bio Center**
  - Creating an ecosystem for fostering bio-health industry based on innovative technology, promoting new industries
  - Development of public technology to respond to social issues, customized support for corporate needs
- Innovation Cluster Department**
  - Discovering and spreading sustainable innovation clusters, and supporting their globalization
  - Advancement of the innovation cluster, focusing on the 4th industry and providing professional services
- Policy Research Office**
  - Establishing policies for innovative growth and economic development of Gyeonggi-do in a future-oriented way
  - Establishing data-based policies, activating domestic and international cooperative networks



# Gyeonggi-do will brighten up Korea

Gyeonggi-do has been leading the economy as Korea's largest local government.

This is a place that has created more than 60% of jobs nationwide, leading the 4th industrial revolution such as IT and bio-health. Gyeonggi-do is opening up a prosperous future as the new economic hub of Northeast Asia.

We ensure your success in Gyeonggi-do, the economic and industrial center of the Korean Peninsula.

**Gross regional product** \* As of 2020

**486 trillion won**  
25.1% of GNP  
(No.1 in the country)



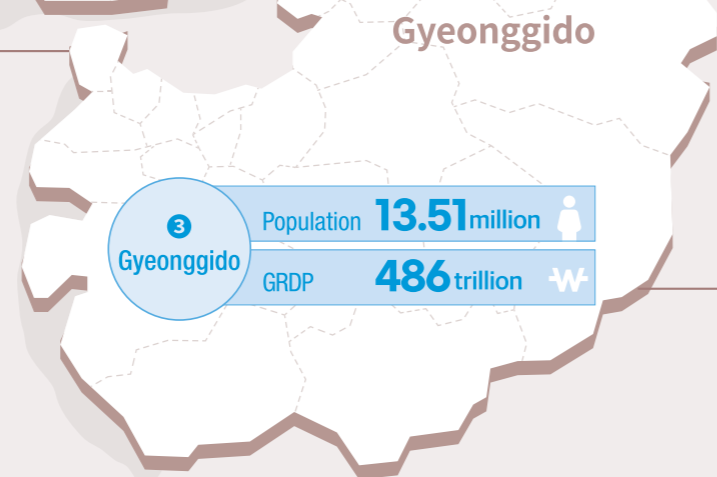
**Economically active population(EAP)** \* As of January 2022

**7.533 million people**  
26% of national EAP  
(No.1 in the country)



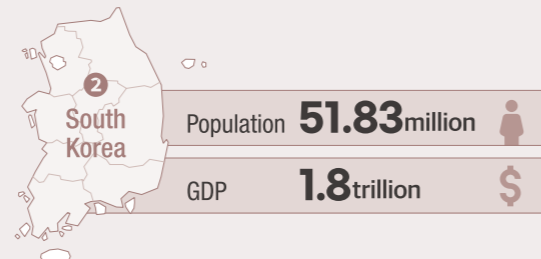
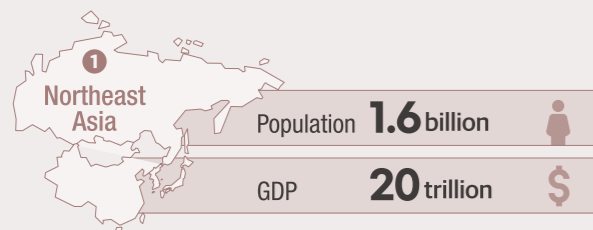
**Total population** \* As of 2020

**13.511 million people**  
26% of national EAP  
(No.1 in the country)



As a huge consumer market in the metropolitan area, Gyeonggi-do is emerging as the center of Northeast Asia.

- ▶ Has a strong competitiveness in Northeast Asia, a land of opportunity with 1.6 billion people
- ▶ Rapidly emerging as one of the world's three largest trading blocks along with EU/NAFTA

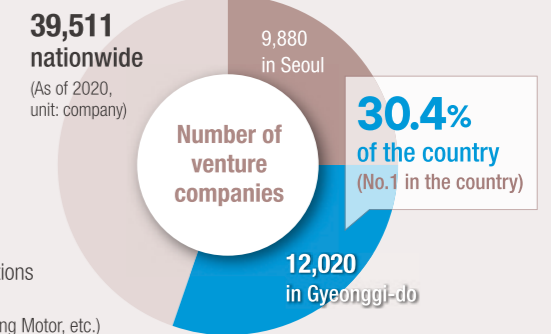


Gyeonggi-do semiconductor cluster will be created to foster the semiconductor industry.

- Large and small businesses grow together through localization of parts, materials, and equipment
- Fostering startups and talents through search and support for semiconductor venture business models
- Through smart infrastructure for housing, culture, and education, creation of a smart city complex

As one of the best business partners, we promote various collaborations with companies located in Gyeonggi-do.

- ▶ Headquarters of Korean global corporations in Gyeonggi-do (Samsung Electronics, SK Hynix, KT, Ssangyong Motor, etc.)
- ▶ Subcontractors of large corporations in Gyeonggi-do



**3,869,640 nationwide**  
(As of 2019, unit: company)

**Number of SMEs**

773,637 in Seoul  
**877,428 in Gyeonggi-do**

**22.7% of all industries nationwide**  
(No.1 in the country)

**30.5% of the manufacturing industry**  
(No.1 in the country)

**644,400 nationwide**  
(As of 2021, unit: million dollars)

**Total exports**

104,120 in Chungnam  
**137,882 in Gyeonggi-do**  
**21.4% of the country**  
(No.1 in the country)

We arrange optimal customized investment based on various experiences and know-how.



One-stop services for all administrative tasks necessary for investment



Establishment of network connecting provinces, cities and counties



Assignment of person in charge for each project and operation of task-force teams

A time-saving and efficient transportation infrastructure will open clear business paths for you.

- ▶ Incheon/Gimpo International Airport and Pyeongtaek/Incheon International Port Road that connects the metropolitan area within one hour
- ▶ GTX, a metropolitan express railway that connects Seoul and major cities in Gyeonggi-do within 15 to 30 minutes



Gwanggyo  
Techno Valley

## A Global high-tech mecca Gwanggyo Techno Valley(GTV)

GTV, which accommodates GBSA, Advanced Institutes of Convergence Technology and Korea Nano Technology Institute, is a base for business support and scientific and technological innovation.

Through comprehensive corporate support, GTV is strengthening the business environment and competitiveness of SMEs in the province, and promoting the development of local industries and technologies.

### Status of Gwanggyo Techno Valley (GTV)

Number of occupants 196

Location : 107, Gwanggyo-ro, Yeongtong-gu,  
Suwon-si, Gyeonggi-do



1 GBSA (headquarters)



2 Gyeonggi R&DB Center



3 Gyeonggi Bio Center



4 Gwanggyo Business Center



Startup Campus



Gyeonggi Center for Creative Economy & Innovation (GCCEI)



Global R&D Center

Pangyo  
Techno Valley

## A leader of the 4th industrial revolution, Pangyo Techno Valley(PTV)

Pangyo Techno Valley, established for systematic support and management of companies, is a major innovation cluster in Gyeonggi-do, Serving as a hub for global convergence R&D centered on global IT, BT, CT, and NT. Through technological convergence and active human exchange between companies, PTV creates an innovative and creative ecosystem.

### Status of Pangyo Techno Valley (PTV)

Number of occupants 1,300

Location: 645 Daewangpangyo-ro,  
Bundang-gu, Seongnam-si, Gyeonggi-do





**Gyeonggido  
Business & Science  
Accelerator**



**Always renewed support for  
strong SMEs.**



**For the success of economy of Gyeonggi-do,  
with more amazing technology.**

**Active communication for  
the region.**



A place to take chances for success  
for all businesses in Gyeonggi-do,  
**Gyeonggido Business & Science Accelerator**

# I

**Fostering global SMEs  
through customized  
support at each  
growth stage**

- 01** Startup/Venture support
- 02** Supporting the growth of SMEs
- 03** Support for export and marketing

# II

**Creation of new  
industries and jobs  
through scientific  
and technological  
innovation**

- 04** Leading the 4th Industrial Revolution
- 05** Fostering the bio-health industry
- 06** Advancement of cluster innovation

# III

**Realization of  
customer value  
through on-site  
communication**

- 07** Advancement of regional and specialized industries
- 08** Policy research on businesses, science and technology





I. Fostering global SMEs through customized support at each growth stage

- 01 Startup/Venture support
- 02 Supporting the growth of SMEs
- 03 Support for export and marketing

Creating a startup ecosystem for “new growth” through support for startups and established ventures

Business Service

# 01

**Fostering global SMEs through customized support at each growth stage**

## Startup/ Venture support



Gyeonggi Venture Center

① Identify innovative technology startups and support them to grow.

Startup support throughout the entire cycle from idea discovery to growth and re-challenge

- ▷ Systematic support from discovery of promising ideas to commercialization (productization, financing and marketing) and re-challenge (restart, reinvestment)

Focused support on industries and specialized fields that will lead the future

- ▷ Identifying and supporting excellent companies in innovative new industries such as BIG3, D.N.A., and metaverse
- ▷ Support for living and environment-friendly companies such as sharing economy, companion animals, and carbon-neutral companies

② Expand on-line and off-line startup infrastructure and strive to revitalize local networks.

Fostering innovative entrepreneurs through online startup platforms and startup hubs

- ▷ Provision and communication of real-time, integrated startup information using the "Gyeonggi Startup Platform (GSP)"
- ▷ Startup education by field and stage, fostering startup talents by networking accelerators

Establishment and activation of regional networks throughout Gyeonggi-do

- ▷ Active use of the startup incubation spaces (Suwon, Pangyo, Goyang, etc.) and promotion of collaboration between incubation institutions
- ▷ Creating and activating the Gyeonggi Venture Center, a space that supports startups at each growth stage throughout the entire cycle
- ▷ Operation of a prototype factory to materialize startup ideas



Fair M&A Support Center

③ Make efforts to strengthen the startup ecosystem through a virtuous cycle of public and private cooperation.

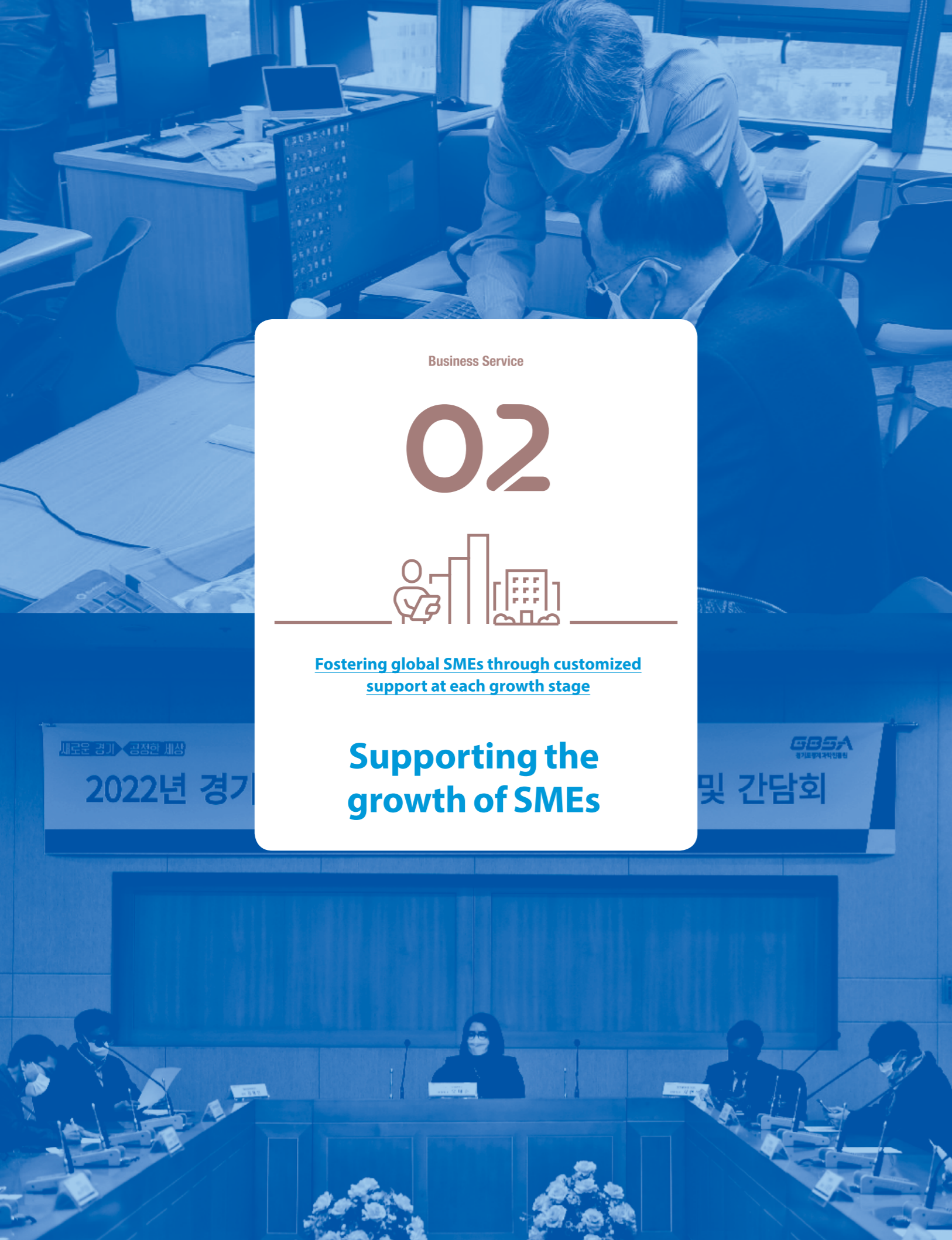
Encouraging private sector investment to startups by attracting attention to them

- ▷ Encourage crowdfunding (sponsorship type, securities type) and support commercialization for successful investment companies
- ▷ Connect investment institutions such as AC and VC with startups to encourage investment and support commercialization

Promotion of M&A for a virtuous cycle in the startup ecosystem

- ▷ Reinforcement of public functions to create a startup-friendly ecosystem that leads to start-up, investment, growth, recovery and reinvestment.





Business Service

# 02



Fostering global SMEs through customized support at each growth stage

## Supporting the growth of SMEs

### I. Fostering global SMEs through customized support at each growth stage

- 01 Startup/Venture support
- 02 Supporting the growth of SMEs
- 03 Support for export and marketing

## Opening a bright future for Gyeonggi-do by supporting the growth of SMEs

#### ① Support companies to grow and represent Gyeonggi-do.

Reinforcement of corporate global competitiveness through selective and intensive support

- ▷ Fostering star companies and global SMEs, supporting stock market listing, etc.

Identifying and certifying excellent companies with growth potential

- ▷ Certification of promising SMEs, good enterprises, family-friendly enterprises, etc.

#### ② Provide all-out efforts to support commercialization customized to the needs of companies.

Development of sustainable management capabilities of SMEs through optimal support for the needs of business sites

- ▷ Customized support for sales channels and design development of companies, support for excellent programs of economic organizations.
- Customized support for excellent female entrepreneurs, support for U-turn companies and companion animal businesses, etc.

#### ③ Foster talents who will lead the future of the company.

Support for customized education in key future industries and strengthen responsiveness to digital technology

- ▷ Reinforcement of educational contents in ESG (environmental, social and governance) field, on/offline hybrid education according to paradigm change, and fostering future industry talents in the fields such as big data, etc.

#### ④ Create an industrial ecosystem for the future of Gyeonggi-do.

Support for responding to future industrial ecosystems such as carbon neutrality and new industries

- ▷ Operation of ESG, Green New Deal, Carbon Neutral Fund and Investment Fund for Industry Development, etc.

Creating a favorable business environment in Gyeonggi-do by resolving corporate difficulties and reforming regulations

- ▷ Operation of corporate SOS center, activation of regulatory sandbox, etc.



(1) Professional technical education in science and engineering fields  
(4) A ceremony for global SME designation and meetings







Business Service

03



Fostering global SMEs through customized support at each growth stage

## Support for export and marketing

I. Fostering global SMEs through customized support at each growth stage

- 01 Startup/Venture support
- 02 Supporting the growth of SMEs
- 03 Support for export and marketing

## Enhancing the global export competitiveness of SMEs through support for export and marketing

### ① Support to create a digital commerce ecosystem.

Securing future competitiveness through digital transformation of the supporting infrastructure

- ▷ Digitalization of the SME trade support based on "gbcprime.com", an exhibition and meeting platform that allows overseas buyers to meet the excellent products of reliable Korean companies
- ▷ Completion of global on/offline network through expansion of digital GBC organization
- ▷ Digital transformation of the support system for export companies by introducing "GBC-linked support program at each growth stage"

### ② Respond to the new paradigm of the commercial environment.

In the era of great digital transformation, responding to changes in the global trade environment and developing new business models

- ▷ Preemptive response to changes in the trade environment and global issues such as the spread of the untact economy, digitalization, and carbon neutrality
- ▷ Holding online and offline converged meetings, Gyeonggi-do's major trade support project (Korea and overseas G-Fair, and export conference inviting overseas buyers)

### ③ Efforts to pioneer the global market.

Considering promising and strategic export regions, providing support for SMEs in the province to enter the global market

- ▷ Operation of Trade Mission supporting overseas expansion of the K-medical and bio companies in Gyeonggi-do
- ▷ Operation of pavilion for overseas exhibitions, and support for individual participation in overseas exhibitions

### ④ Strengthen export business capabilities.

One-stop support for overseas marketing from export preparation to digital trade in order to grow export companies

- ▷ Export support hiring dedicated mentors (120 companies), strengthening export marketing capabilities by resolving difficulties
- ▷ Providing digital trade experience to exporting companies through global social media platforms and online marketing in China



(ㄹ) G-FAIR India, (ㄷ) Asean Day Online Export Conference





## Changing the paradigm of future science and technology by leading the 4th industrial revolution

Business Service

# 04

**Creation of new industries and jobs through scientific and technological innovation**

## Leading the 4th Industrial Revolution

### II. Creation of new industries and jobs through scientific and technological innovation

- ① **Support ecosystem innovation and advancement focusing on human resources.**

Laying the foundation for innovation through cooperation with various innovators, and nurturing professional talents for the future society

  - Ecosystem Creation**
    - ▷ Establishment and designation of data centers, AI converged hubs, and information promotion organizations for innovative growth based on applied technologies
  - Network**
    - ▷ Reinforcement of shared growth of SMEs through convergence between innovation factors (Industry-University Cooperation Foundation, economic groups, etc.) and cooperative networks
  - Nurturing Talents**
    - ▷ Operation of SW Mirae Chaeum Centers, nurturing big data experts, and supporting R&D led by Gyeonggi-do researchers

\* Gyeonggi-do residents' new technology proposal contest, new middle-aged startup supporters that converge across generations, cyber security valley, working group for future industry research, etc.
- ② **Promote manufacturing innovation by supporting technology development throughout the industries.**

Establishing a foothold for corporate growth by promoting convergence and complex R&D and manufacturing innovation in the industrial technology field

  - Technology Development**
    - ▷ Technology development (general, textile/leather, hydrogen, etc.), fostering material/part/equipment companies, consulting for participation in government projects, operation of new product development centers, etc.
  - Manufacturing Innovation and mutual cooperation**
    - ▷ Technology exchange between SMEs and large enterprises in the field of materials, parts and equipment, technology development for their mutual growth

\* Three incentives for technological innovation:  
 ① Recognition of change (to respond to the future)  
 ② Technology innovation (HW→SW)  
 ③ Mutual cooperation (large and small businesses)
- ③ **Lead the digital transformation centered on cutting-edge technology.**

Demonstration and advancement of future technologies using advanced infrastructure. Realization of science and technology felt by citizens by solving social problems

  - Demonstration and Advancement of Technology**
    - ▷ A test bed for AI technology demonstration, the Digital Open Lab to support innovation of devices that converge on Data, Network, AI (DNA), Nurturing Gyeonggi-do robot and data industry, operation of a big data (distribution) platform for local economy, Supporting Gyeonggi VR/AR converged industry
  - Solving Social Problems**
    - ▷ Technology development to solve local disasters and safety problems to improve the quality of life of residents, and demonstration of AI technology for public services



(↑) Digital Open Lab, (→) (↖) AI Experience Studio





Business Service

# 05

**Creation of new industries and jobs through scientific and technological innovation**

## Fostering the bio-health industry

2021년 7월 9일(금) 경기도경제과학진흥원 바이오센터  
 협석대상 | 주최 | 주관  
 2021년도 첨단바이오의약품 비임상·품질시험 전문교육

2021년도 첨단바이오의약품 비임상·품질시험 전문 교육

비임상·품질시험 전문교육

구분	구분	구분
교육일	2021. 7. 9(금)	교육시간
교육장	경기도경제과학진흥원 바이오센터	교육대상
교육내용	첨단바이오의약품 비임상 시험 방법론	

II. Creation of new industries and jobs through scientific and technological innovation

- 04 Leading the 4th Industrial Revolution
- 05 Fostering the bio-health industry**
- 06 Advancement of cluster innovation

Creating a new growth engine for Gyeonggi-do by fostering the bio-health industry



Meetings of experts from industry, academia, research, and hospital

① Take the lead in making Gyeonggi-do a "base of global bio-health innovation".

- ▷ The control tower to foster the bio-health industry in Gyeonggi-do
- ▷ Establishment and operation of the industry-academic-research-hospital cooperation systems to support innovative growth of new industries such as bio-health
- ▷ Fostering bio experts suitable for business sites

② Reinforce the competitiveness of bio-health companies with customized support for on-site demand.

- ▷ Providing test and analysis services using advanced research equipment for material discovery, characteristic analysis, effectiveness evaluation, and prototype development
- ▷ Supporting the commercialization of biotechnology through industry-academy-research joint development and transfer of technology
- ▷ Supporting the data-based empirical tests for innovative bio-health products and services



Support for research equipment analysis



MOUs for strategic support for medical products

③ Expand public R&D and development of new industrial technologies.

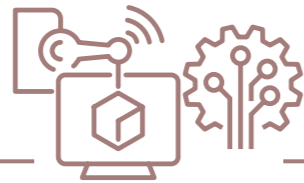
- ▷ Promotion of public R&D to overcome community problems such as environmental diseases, infectious diseases, and aging society
- ▷ Expansion of new business in the field of new technology and new growth bio-health industry
- ▷ Develop innovative digital bio-health technologies and strengthen expertise in advanced biopharmaceuticals





Business Service

06



Creation of new industries and jobs through scientific and technological innovation

## Advancement of cluster innovation



## II. Creation of new industries and jobs through scientific and technological innovation

04 Leading the 4th Industrial Revolution

05 Fostering the bio-health industry

06 Advancement of cluster innovation

## We will nurture the industry by focusing on cutting-edge convergence technology through the advancement of cluster innovation

### ① Accelerate innovative growth of high-tech companies.

Reinforcement of competitiveness through innovative growth of the companies in Pangyo and Gwanggyo Techno Valley

- ▷ Systematic management of company's difficulties and needs and provision of customized services based on the actual survey of Pangyo and Gwanggyo Techno Valley
- ▷ Operational support and management of converged innovation clusters of industry, academia, research, and hospital that lead the new normal technological revolution
- ▷ Support for housing rental deposits for corporate executives and employees in Pangyo (to securing excellent manpower for the companies and improve the working environment for employees)
- ▷ Differentiated PR support for outstanding and innovative companies in Pangyo through the joint promotion of Pangyo (SNS, website, PR center, etc.)



### ② Take the lead in global expansion.

Supporting promising startups to advance into the global market

- ▷ Gyeonggi-do Global Startup Fostering Project (startup accelerating, investment exchange, interpretation/translation support)
- ▷ Integrated public relations of Pangyo Techno Valley (promoting technology exchange and networking with overseas clusters)
- ▷ Global business (support for overseas business meetings and investment attraction)



### ③ Lead low-carbon(carbon-neutral) ESG.

Expansion of sustainable values of eco-friendliness, society, and governance

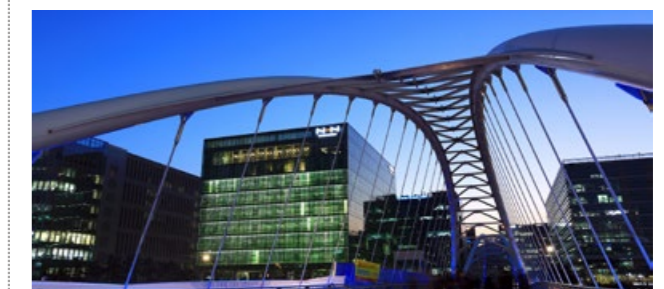
- ▷ Promotion of sharing economy (support for sharing economy projects (low carbon, etc.) in Gyeonggi-do industrial complexes)
- ▷ Introducing cloud services for SMEs in the province, and nurturing IT experts and supporting education for the underprivileged
- ▷ Creating social values and strengthening the transparency of the business systems (community-oriented social contribution, and the comprehensive ESG evaluation system)
- ▷ Expanding the use of renewable energy in public buildings in Pangyo and Gwanggyo, and enforcing energy-saving policies



### ④ Strengthen the environment for innovation clusters.

Strengthen building management (facility, business space and safety) expertise and secure safety

- ▷ Providing enterprise support infrastructure through establishment and efficient operation of professional management system
- ▷ Maximizing functions of integrated facilities and buildings through occupancy management according to building characteristics
- ▷ Prevention of disasters, safety accidents and damage to human life through systematic and preventive inspection of facilities
- ▷ Expand participation in new clusters through expertise in cluster operation







Business Service

# 07

**Realization of customer value through on-site communication**

## Advancement of regional and specialized industries

### Revitalizing the local economy through the advancement of “site-specific” regional/specialized industries

① Our best effort to implement customized support projects.

<p><b>Strengthening Customized Support</b></p> <p>Providing customized support to meet the needs of SMEs</p> <ul style="list-style-type: none"> <li>▷ Providing customized support for product development, production, and sales channels of SMEs</li> </ul>	<p><b>Promotion of City-County Cooperation Projects</b></p> <p>Driving regional economic development by promoting projects that reflect the industrial characteristics of cities and counties</p> <ul style="list-style-type: none"> <li>▷ Product development, process improvement, modernization of production facilities, strengthening corporate capabilities, discovering and nurturing hidden champions, competition for Young entrepreneurship, etc.</li> <li>▷ Support for overseas market development for cities and counties (providing export logistics costs, operating global trade mission and searching for exhibitions, etc.)</li> </ul>
---	--



GTC Yangju Global Online Exhibition & Trade Meeting

② Focus on nurturing specialized industries in Gyeonggi-do, such as furniture and textiles.

<p><b>Strengthening the Competitiveness of the Furniture Industry</b></p> <p>Enhancing the capabilities of furniture companies by intensive fostering of the furniture industry</p> <ul style="list-style-type: none"> <li>▷ Support for furniture companies in product development and marketing, participating in domestic and foreign exhibitions, Establishing and operating the joint infrastructure in the district of furniture craftsmen in Gwangju City</li> </ul>	<p><b>Promotion of the Textile Industry</b></p> <p>Transition of textile industry to sustainable eco-friendly textile and fashion industry</p> <ul style="list-style-type: none"> <li>▷ Active operation of Gyeonggi Textile Marketing Center(GTC) for overseas market development for the textile industry</li> <li>▷ Support for practical use of fashion design and participation in domestic and foreign exhibitions, technical consulting for problem-solving, and support for new material development</li> </ul>
---	---



Business agreements for textile enterprise support projects

③ Resolve difficulties faced by companies by promoting on-site support projects.

<p><b>One-stop Management Support</b></p> <p>Creating a healthy corporate environment by operating corporate SOS centers at each Regional Support Center</p>	<p><b>Expanding the Inflow of Underserved Companies</b></p> <p>Driving growth by identifying and supporting marginalized small businesses</p>	<p><b>Extensive Communication with Customers</b></p> <p>Active online and offline networking between businessmen, cities, counties, and related organization</p> <ul style="list-style-type: none"> <li>▷ Active promotion of information exchange and support projects</li> </ul>
--	---	--



Opening ceremony of East Regional Support Center



Business Service

# OS

Realization of customer value through on-site communication

## Policy research on businesses, science and technology

### “Field-focused” policy research for businesses, science and technology

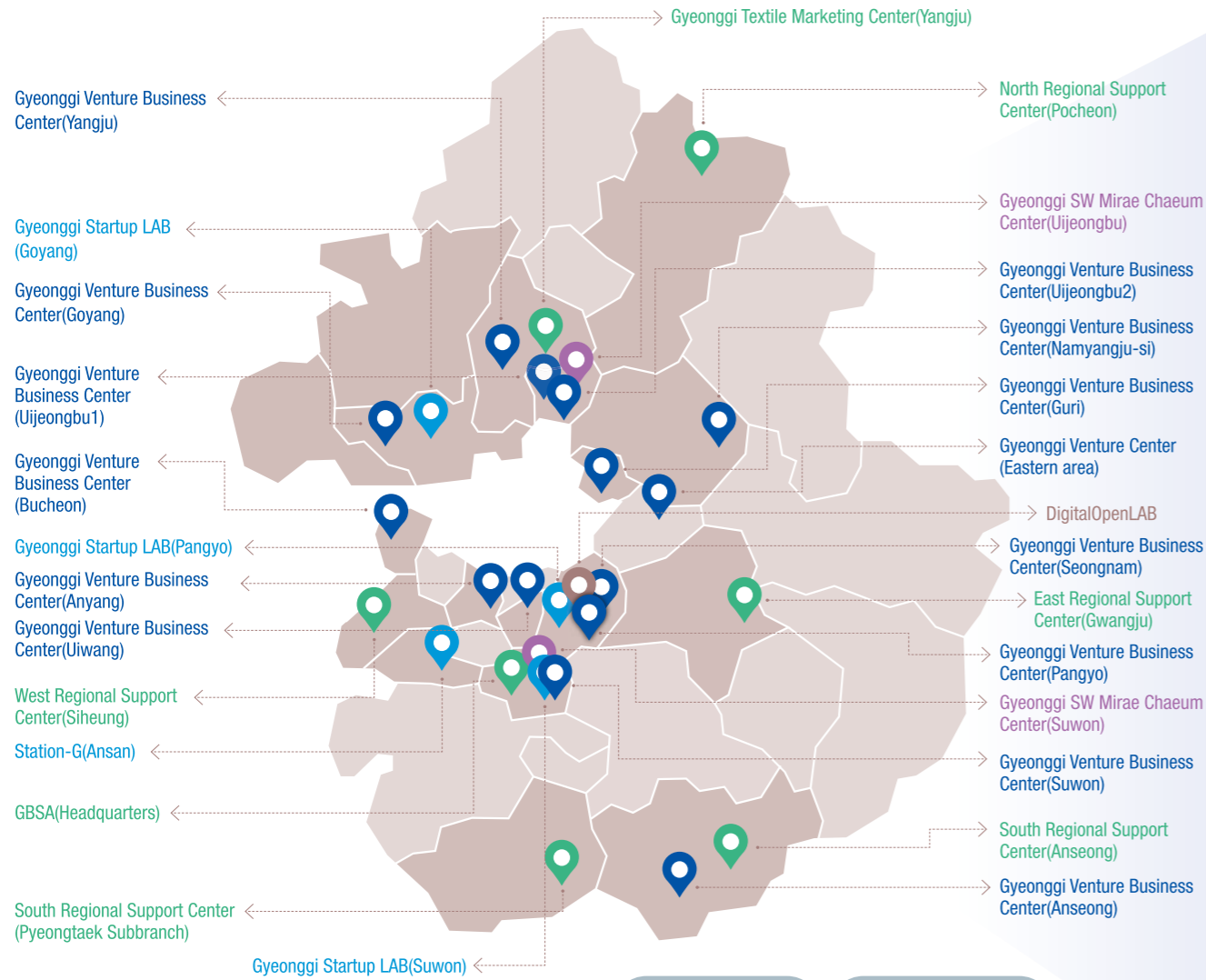
- ① **Present future-oriented policies and visions.**  
Establishing mid to long-term policy plans for the systematic fostering of SMEs, science and technology
  - ▷ Establishing mid to long-term basic plans to lay the foundation for future innovation
  - ▷ Establishing a comprehensive plan for systematic promotion of SMEs
  - ▷ Status survey for future policy development, and research on improvement measures
- ② **Study field-oriented policy alternatives.**  
Field-based policy research such as timely analysis of current issues and suggestion of alternatives
  - ▷ Analyzing pending provincial issues and suggesting alternatives (operation plans for innovative product systems, introduction of ESG, plans to attract the Metaverse Global Center, etc.)
  - ▷ Publishing the “Policy Focus (Issue Report)” to quickly analyze current issues and suggest countermeasures
  - ▷ Publishing the “GBSA Review” to analyze industry, technology, and policy trends in a timely manner and to provide implications
- ③ **Reinforce the operation of the policy cooperation bases.**  
Establishment and operation of a base for linking the innovation policies of the central government and Gyeonggi-do
  - ▷ Operating a regional science and technology base (Gyeonggi R&D Support Group)
  - ▷ Operating a regional science and culture base (regional centers of science and culture)
  - ▷ Operating a base for cooperation between the central government, provinces, cities, and counties (projects for future science and technology in the region)





# GBSA Local Offices

- Headquarters and 7 branches
- 14 Gyeonggi Venture Business Center
- 4 Startup Labs(including Station-G Ansan)
- 2 Gyeonggi SW Mirae Chaeum Centers
- 1 Digital Open Lab



## Contact information

GBSA is by the side of SMEs anytime, anywhere.

City	Location	Address	TEL
Goyang-si	Gyeonggi Venture Business Center(Goyang)	Rodeotop BLDG 5F, 20-38, Mugunghwa-ro, Ilsandong-gu, Goyang-si	031-903-9771
	Gyeonggi Startup LAB(Goyang)		
Guri-si	Gyeonggi Venture Business Center(Guri)	Taejin Co., Ltd. 2nd-3rd floor, 33, Donggureung-ro 136beon-gil, Guri-si	031-830-8530
Namyangju-si	Gyeonggi Venture Business Center(Namyangju-si)	JS BLDG 2F, 74, Byeolnae-2ro, Byeonnae-dong, Namyangju-si	031-830-8511
Bucheon-si	Gyeonggi Venture Business Center(Bucheon)	Wonmi Eoulmadang 4F, 27, Bucheon-ro 136beon-gil, Wonmi-gu, Bucheon-si	032-320-2100
	Gyeonggi Venture Business Center(Seongnam)	2F, 16, Dunchon-daero 466beon-gil, Jungwon-gu, Seongnam-si	031-830-8550
	Global R&D Center	22, 712beon-gil, Daewangpangyo-ro, Bundang-gu, Seongnam-si	031-739-7114
	Start Up Campus	20, Pangyo-ro 289beon-gil, Bundang-gu, Seongnam-si	031-5171-5114
Seongnam-si	DigitalOpenLAB	BLDG 1 3F, 20, Pangyo-ro 289beon-gil, Bundang-gu, Seongnam-si	031-710-8717
	CCEI(Pangyo)	12, Daewangpangyo-ro 645beon-gil, Bundang-gu, Seongnam-si	031-776-4840
	Gyeonggi Venture Business Center(Pangyo)	KT Bundang BLDG 1F, 6, Seongnam-daero 779 beon-gil, Bundang-gu, Seongnam-si	031-830-8621
	Gyeonggi Startup LAB(Pangyo)	Startup Campus BLDG 1 8F, BLDG 2 6F, 20, 289beon-gil, Pangyo-ro, Bundang-gu, Seongnam-si	031-830-8630
Hanam-si	Gyeonggi Venture Center(Eastern area)	239 Geomdansan-ro, Hanam-si	031-830-8547
Gwangju-si	East Regional Support Center(Gwangju)	3rd floor (Opo Nonghyup Shinhyeon Branch), 113, Sinhyeon-ro, Opo-eup, Gwangju-si, Gyeonggi-do	031-830-8561
	GBSA(Headquarters)	107, Gwanggyo-ro, Yeongtong-gu, Suwon-si	031-259-6000
	Gyeonggi Venture Business Center(Suwon)	Gwanggyo Business Center #403, 156, Gwanggyo-ro, Yeongtong-gu, Suwon-si	031-307-1212
	Gyeonggi SW Mirae Chaeum Center(Suwon)	B1F, in Yeongu-dong, Gwanggyo Techno Valley, Gwangyeo-ro 107, Yeongtong-gu, Suwon-si	031-259-6211
Suwon-si	Bio Center	Bio Center, 147, Gwanggyo-ro, Suwon-si	031-888-6118
	Gyeonggi Startup LAB(Suwon)	Gwanggyo Business Center 6F, 156, Gwanggyo-ro, Yeongtong-gu, Suwon-si	031-8064-1950
	Business Incubation Center	Business Incubation Center, 107, Gwanggyo-ro, Yeongtong-gu, Suwon-si	031-259-6000
	Gyeonggi R&DB Center	Gyeonggi R&DB Center, 147, Gwanggyo-ro, Suwon-si	031-259-6000
	New Product Development Center(Suwon)	B1F, in Yeongu-dong, Gwanggyo Techno Valley, Gwangyeo-ro 107, Yeongtong-gu, Suwon-si	031-259-6156
Siheung-si	West Regional Support Center(Siheung)	Siheung Business Center 1F of TU Korea, 237, Sangidaehak-ro, Siheung-si	031-432-2400
Ansan-si	Station-G(Ansan)	784, Jungang-daero, Danwon-gu, Ansan-si	031-830-8642
	Gyeonggi Venture Business Center(Anseong)	Chung-Ang University #609 2F, 4726, Seodong-daero, Daedeok-myeon, Anseong-si	031-830-8570
Anseong-si	South Regional Support Center(Anseong)	University Industry Cooperation 1F of Hangeyong University, 30, Biryong5-gil, Anseong-si	031-672-3589
	Gyeonggi Venture Business Center(Anyang)	Gyeonggi Venture Yeonsung Univ. Center 11F, 111, Anyang-ro, Manan-gu, Anyang-si	031-830-8661
Yangju-si	Gyeonggi Venture Business Center(Yangju)	Yangju Techno City 4F, 847, Buheung-ro, Gwangjeok-myeon, Yangju-si	031-830-8695
	Gyeonggi Textile Marketing Center(Yangju)	#207 (office), #508 (design room, show room), 1215 Pyeonghwa-ro, Yangju-si	031-830-3631
Uiwang-si	Gyeonggi Venture Business Center(Uiwang)	#804~806, Indeogwon IT Valley BLDG B, 40, Imi-ro, Uiwang-si	031-830-8611
	Gyeonggi Venture Business Center(Uijeongbu1)	18-26, Mangwol-ro, Uijeongbu-si	031-830-8505
	Gyeonggi Venture Business Center(Uijeongbu2)	CRC BLDG 7F, 234, Singheung-ro, Uijeongbu-si	031-830-8520
	New Product Development Center(Uijeongbu)	1F, 93, Sandan-ro 76beon-gil, Uijeongbu-si	070-7775-4093
Pyeongtaek-si	Gyeonggi SW Mirae Chaeum Center(Uijeongbu)	1F, 93, Sandan-ro 76beon-gil, Uijeongbu-si	031-853-7992
	South Regional Support Center (Pyeongtaek Subbranch)	Chamber of Commerce 1F, 149, Pyeongtaek-ro, Pyeongtaek-si	031-651-7161
Pocheon-si	North Regional Support Center(Pocheon)	8F, 62, Songu-ro, Soheul-eup, Pocheon-si	031-850-7100

Taking a look at SME support information at a glance! Easy and fast!

egbiz [www.egbiz.or.kr](http://www.egbiz.or.kr)





## Overview of Gyeonggi Overseas Offices



GBSA is operating Gyeonggi Business Center(GBC) and Gyeonggi Textile Marketing Center(GTC) to enhance network supporting small and medium business.

**GBC,  
Gyeonggi Business Center**  
9 countries and 12 offices

Playing the role of overseas branch of small & medium business in Gyeonggi province which lacks local network in spite of excellent marketability, GBC supports from finding buyers to signing a contract.

**GTC,  
Gyeonggi Textile Marketing Center**  
2 countries and 3 offices

To activate overseas marketing of textile enterprises in Gyeonggi province, we are supporting export jobs such as finding buyers, participation in exhibition.