

Larger than life

Kennedy Theatre brings
'The BFG' to the stage p. 11



GIGER'S PLANS FOR UH

What the governor-elect says he would like to do with the university.

p. 5

BASKETBALL IS BACK

How this season's players stack up against their conference rivals.

p. 16

BEST BATHROOMS ON CAMPUS

Find out where it's best to be when nature comes calling.

p. 13

3040 Waiālae Ave.
Honolulu, HI 96816
(808) - 734 - 0404



NOW HIRING!!!

CHECK THE WAVES

Get the Surf Report for free on our Mobile App
Search "Kaleo O Hawaii" in the App Store or Google Play

ADVERTISING

YOUR ROAD TO SUCCESS STARTS HERE

ARGOSY UNIVERSITY, HAWAII



Offering evening, weekend and online classes for flexibility that fits your life. Campus located in downtown Honolulu.

Build your career in:

- Psychology
- Business
- Education
- Criminal Justice
- Liberal Arts
- Information Technology

Degrees available include:

- Associate's
- Bachelor's
- Master's
- Doctoral

ARGOSY UNIVERSITY

ARGOSY UNIVERSITY, HAWAII
 Learn more today! 808.791.5249
 hawaii@argosy.edu | argosy.edu/hawaii

Argosy University is accredited by the Senior College and University Commission of the Western Association of Schools and Colleges (985 Atlantic Avenue, Suite 100, Alameda, CA 94501, www.wascenior.org). See auprograms.info for program duration, tuition, fees, and other costs, median debt, federal salary data, alumni success, and other important info. Programs, credential levels, technology, and scheduling options are subject to change. Argosy University, Hawaii, 1001 Bishop Street, Suite 400, Honolulu, HI 96813. Our email address is csprogramadmin@edmc.edu. ©2014 Argosy University® AU-14138 9/14

KING STREET PROPERTIES

Nehoa Terrace

(808) 791-5591
 Renovated
 1519 Nehoa Street
 Honolulu, HI 96822

University Manor

(808) 741-1061
 UniversityManorHawaii.com for details
 2256 Sea View Avenue
 Honolulu, HI 96822

Pawaa Terrace

(808) 721-2040
 Renovated
 1019 Punahou Street
 Honolulu, HI 96826

Kewalo Terrace

(808) 221-1910
 Renovated
 1525 Kewalo Street
 Honolulu, HI 96822

\$30 application processing fee per adult applicant

\$1 Off
 Your \$5 purchase
 REDEEM THIS COUPON TODAY!

SQUASH SOUP WITH CURRY SHRIMP & BRIOCHE CROUTONS

808.988.4310
 MAŌOA MARKETPLACE

UHOLOID

DISCOUNT OF THE WEEK

HULA'S
 BAR & LEI STAND
 HULAS.COM

EVERY THURSDAYS

COLLEGE NIGHT

FREE COVER
 WITH ID, FOR YOU AND ALL GUESTS (21+)

HAPPY HOUR

10:00 AM - 7:00 PM

*Valid Until 9-22-15

GO TO OUR DIRECTORY FOR MORE DISCOUNTS! KALEO.ORG/ID

ANSWER THE CALL



AD REP REQUIRED



KA LEO IS NOW HIRING AD REPRESENTATIVES

Kaleo.org - Hemenway 107
KALEO
 THE VOICE

FRONT MATTER

◀ WHAT'D I MISS?



Mark Takai wins congressional district 1 race

Democrat Mark Takai wants to ensure that support will be provided to the university with research and innovation funds, as well as any past funding continues into the future. He won with nearly 94,000 votes. WANT TO KNOW MORE? VISIT TINYURL.COM/KL10923-1

Student robbed by Art Building Nov. 3

Two males robbed a student during the early morning on Nov. 3, taking the student's cell phone and shirt. Department of Public Safety issued an email alert about this incident on Nov. 5. WANT TO KNOW MORE? VISIT TINYURL.COM/KL10923-2



'Big Hero 6' review

Does the film stack up to Marvel and Disney animated films alike? See what our reviewer thinks. WANT TO KNOW MORE? VISIT TINYURL.COM/KL10923-3

Fantasy fix

Find fantasy football sleepers, tips and analysis ahead of the play-offs. Defensive matchups and an underrated rookie quarterback might prove valuable for your fantasy team. WANT TO KNOW MORE? VISIT TINYURL.COM/KL10923-4

Worthy Wahine

A handful of Wahine soccer players earned all-conference honors last week. See how nine coaches in the conference chose to honor the veterans and rookies alike on the Hawai'i roster. WANT TO KNOW MORE? VISIT TINYURL.COM/KL10923-5

Stray away from pumpkin pie

It's time to stray away from the traditional pumpkin pie and try sweet potato. The tastes are similar, but the tartness of the sweet potato are sure to take your taste buds to a whole new holiday level. WANT TO KNOW MORE? VISIT TINYURL.COM/KL10923-6

▶ WHAT'S NEXT? ▶▶

Not-so-dearly departed transfers from UH football

IN THE SPORTS SECTION OF OUR NEXT ISSUE ON NOV. 17, 2014

UH to hold Plastic-Free Week

IN THE NEWS SECTION OF OUR NEXT ISSUE ON NOV. 17, 2014

Crashing election night parties

IN THE FEATURES SECTION OF OUR NEXT ISSUE ON NOV. 17, 2014

COVER PHOTO: KENNEDY THEATRE PUBLICITY; FREEPIK
PHOTOS: [LEFT TO RIGHT, TOP TO BOTTOM] ALEX BITTER / KA LEO O HAWAII'; REIS SHIMABUKURO / KA LEO O HAWAII'; DISNEY; DDWILMOTH / FLICKR; BIANCA BYSTROM PINO / KA LEO O HAWAII'; JONATHAN BASILIO / KA LEO O HAWAII'



22 Men's basketball: Rainbow Warriors top HPU in return to the court after Arnold's removal

05_IGE DISCUSSES PLANS FOR UH

David Ige will begin his term on Dec. 1 and has plans for the University of Hawai'i system.

06_UH LOOKS OVERSEAS

The campus continues to expand its international engagement. Partnerships between campus and overseas universities grow.



08_GMO LAW COULD HURT FARMERS

One UH professor says Maui's ban on genetically modified organisms could hurt local agriculture.

08_CAMPUS SEES 900 SUBSTANCE VIOLATIONS

Campus officials weigh in on safety precautions.

10_SHOULD CELEBRITIES BE ROLE MODELS?

Famous people are often looked up to as role models, but is it a good idea? Writer Abbygail Sadoy says we shouldn't take the famous too seriously.

12_LATE NIGHT AT KENNEDY

Thirty plays in 60 minutes, and the audience decides the order as UH's lab theater tries something new.



13_TACO TUESDAY

Tuesdays nights can't be spent any better than going out for discounted tacos. See which vendors are our favorite.

13_NATURE CALLS

The guide to the best and worst restrooms on campus.

20_A PROMISING START

A tough preseason schedule awaits Wahine basketball, but see how the team's first week of action has them excited for the future.



24_MAINTAINING MOMENTUM

See how AKA and Mānoa Maniacs are trying to keep student engagement and ticket sales high after the Gib Arnold controversy.

29_LIFESTYLE RECIPES

It's hard to keep a healthy diet with a busy day-to-day schedule. Try some of some healthy recipes that fit right into your lifestyle, no matter what it is.

▼ MEET THE STAFF



EDITOR-IN-CHIEF Alex Bitter
MANAGING EDITOR Fadi Youkhana
CHIEF COPY EDITOR Wesley Babcock
ASSOC COPY EDITOR Zebley Foster
DESIGN EDITOR Lilian Cheng
ASSOC DESIGN EDITOR Mitchell Fong
NEWS EDITOR Noelle Fujii
ASSOC NEWS EDITOR Meakalia Previch-Liu
FEATURES EDITOR Brad Dell
ASSOC FEATURES EDITOR Ikaika Shiveley

OPINIONS EDITOR Kristen Bonifacio
ASSOC OPINIONS EDITOR Lisa Grandinetti
SPORTS EDITOR Nick Huth
ASSOC SPORTS EDITOR David McCracken
COMICS EDITOR Nicholas Smith
PHOTO EDITOR Lyle Amine
ASSOC PHOTO EDITOR Shane Grace
WEB SPECIALIST Blake Tolentino
WEB EDITOR Alden Alayvilla
ASSOC WEB EDITOR Jeremy Nitta

SPECIAL ISSUES EDITOR David Herman
ALOHA NIGHTS COORDINATOR Evangeline Cook
AD MANAGER Gabrielle Pangilinan
PR COORDINATOR Bianca Bystrom Pino

▼ ADMINISTRATION

Ka Leo O Hawai'i is the campus newspaper of the University of Hawai'i at Mānoa. It is published by the Student Media Board weekly except on holidays and during exam periods. Circulation is 10,000. Ka Leo is also published once a week during summer sessions with a circulation of 5,000. Ka Leo is funded by student fees and advertising.

Its editorial content reflects only the views of its writers, reporters, columnists and editors, who are solely responsible for its content. No material that appears in Ka Leo may be reprinted or republished in any medium without permission. The first newsstand copy is free; for additional copies, please visit Ka Leo. Subscription rates are \$50 for one semester and \$85 for one year.

The Student Media Board, a student organization chartered by the University of Hawai'i Board of Regents, publishes Ka Leo O Hawai'i. Issues or concerns can be reported to the board via bop@hawaii.edu.

©2014 Student Media Board
<http://www.kaleo.org/bop/>

▼ LET'S HAVE A CHAT

KA LEO O HAWAII'
UNIVERSITY OF HAWAII' AT MĀNOA
2445 CAMPUS RD., HEMENWAY HALL 107
HONOLULU, HAWAII' 96822

NEWSROOM (808) 956-7043
ADVERTISING (808) 956-7043
FACSIMILE (808) 956-9962

✉ KALEO@KALEO.ORG
🌐 WWW.KALEO.ORG
🐦 @KALEOOHAWAII

COMPILED BY MATHEW URSUA
STAFF WRITER

WEDNESDAY, OCT. 29

Piano man trespassed

A male was issued a trespass warning at the music building after faculty reported he was banging on a piano in one of the rooms.

Man rummaged for recyclables

Department of Public Safety (DPS) officers spotted a male going through the recyclables container in the service area of the Art Building at 4:08 a.m. The male was issued a trespass warning.

Moped stolen from Hale Noelani

At 9:53 a.m., a moped was reported stolen from Hale Noelani. The complainant reported that his moped was secured with a lock through the back tire.

Fire alarm, evacuation at Hale Wainani

The Honolulu Fire Department responded to a fire alarm at Hale Wainani at 9:10 a.m. Residents evacuated the building, but no smoke or fire was observed.

Graffiti in Center for Hawaiian Studies restroom

At 12:21 p.m., staff at the Center For Hawaiian Studies reported that they found graffiti in a 2nd floor mens restroom.

Stolen parking pass found in parking garage

At 10:57 a.m., Commuter Services reported that they discovered someone using a parking pass that was reported lost or stolen by another person. It happened at the lower campus Dole Street Parking Structure. The pass was found in a vehicle that didn't belong to the owner.

Someone uses photocopy of parking permit in lieu of actual parking permit

At 3:42 p.m., DPS was alerted to a photocopied parking permit in a vehicle parked at the lower campus Dole Street Parking Structure.

THURSDAY, OCT. 30

Altered date on parking pass

At 11:29 a.m., DPS was alerted to an altered parking permit in a vehicle at the lower campus Dole Street Parking Structure. Someone changed the date on a one-day gate ticket that was issued the previous day.

SATURDAY, NOV. 1

Bong confiscated from Hale Noelani dorm

A Hale Noelani resident assistant notified DPS that he discovered a bong in a student's room during a routine check. The bong was found on a desk and confiscated at 2 a.m.

SUNDAY, NOV. 2

Moped broken into at Moore Hall, jacket taken

The storage area beneath a moped seat was broken into at Moore Hall. A jacket was taken valued at \$150.

Maintenance cart found overturned by AgSci

At 3:04 a.m., an E-Z-GO Workhorse maintenance cart was found overturned on the road fronting Agricultural Sciences building. Minor damage to the cart indicated someone may have attempted to bust the ignition or start the vehicle.

MONDAY NOV. 3

Person alters parking permit with sticker

At 2:17 p.m., DPS was alerted to an altered parking permit at Hale Wainani. Someone put a sticker over the permit.

Two mopeds stolen at Lower Campus

Around 10 p.m., two mopeds were reported stolen from the Stan Sheriff Center parking lot. One was a white GTX and the other a Silver Tic Tac.

Student reported seeing male fondling self at lower campus

At 8:40 a.m. a student reported seeing a male fondling himself in the area of the lower campus Phys-

ical Education Athletic Complex. The student who reported it was walking by at the time, and didn't know the suspect.

Moped found 20-ft. from last known location

At 5:30 p.m., DPS responded to a moped theft at the Lower Campus Portables. Shortly after officers arrived, a friend of the complainant who was walking around looking for the moped found it. It was 20 feet away from where it was left. The moped wasn't secured to anything.

TUESDAY, NOV. 4

Law school statue defaced with paintballs

At 12:53 p.m., DPS was alerted to graffiti at the William S. Richardson School of Law. A paintball gun was used to shoot paintballs at the statue that depicts three people facing each other. Maintenance services were notified.

Bike stolen from Moore Hall

At 2:30 p.m., a bike owner reported that his bike was taken from Moore Hall. The bike was not locked. It was reported by the owner.



COMPILED BY NEWS DESK

The following are selections from Ka Leo's daily News at Nine news briefs. These include the most significant local, national and international news. For more details, visit kaleo.org/news/news9/.

MONDAY, NOV. 3

Hawai'i part of top 10 afterschool program list

Hawai'i's Department of Education announced Friday, Oct. 31, that the Afterschool Alliance's "American after 3 p.m." study reported a large amount of Hawai'i parents are content with their child's afterschool program.

Forty percent of children from kindergarten to fifth-grade, 16 percent of children from sixth to eighth grade and 10 percent of students in high school are a part of an afterschool program.

According to the study, the top 10 states are California, the District of Columbia, Florida, Vermont, Massachusetts, Arizona, Oregon, Nebraska, Tennessee and Hawai'i.

SOURCE: HAWAII NEWS NOW

TUESDAY, NOV. 4

Hawaiian Electric to clear solar installation backlog

Customers waiting to connect their rooftop solar systems will gain approval by December 2015.

Nearly 2,800 customers who live in areas with high numbers of photovoltaic connected to the grid are waiting for approval.

The company submitted its plans to do so in a letter to the Public Utilities Commission last Friday.

SOURCE: STAR-ADVERTISER

UH stewards United Kingdom telescope on Mauna Kea

UH assumed ownership of the United Kingdom Infrared Telescope (UKIRT) after the telescope's funding agency could no longer support it.

After the UK-funded operation has ended, UKIRT's existing sublease will be terminated. An agreement with UH, the University of Arizona and Lockheed Martin Space Technology Advanced Research and Development Laboratories will continue the telescope's scientific operation.

SOURCE: UH NEWS

WEDNESDAY, NOV. 5

State of Hawai'i begins health care cuts

The U.S. Supreme Court ruled that the state of Hawai'i will be allowed to reduce health care coverage against non-citizens.

Hawai'i will begin cutting health care services by the end of the week to non-pregnant and adult non-citizens, the Honolulu Star-Advertiser reported.

Last April, a federal appeal court decided that Hawai'i wasn't required to fund Medicaid for migrants from three Pacific Island nations in Micronesia in order to make up for reduced federal funding.

SOURCE: HAWAII NEWS NOW

Syrian Kurdish children allegedly captured and tortured by ISIS

Syrian Kurdish children were allegedly taken and tortured by ISIS members for months, Human Rights Watch, an international advocacy organization reported Tuesday. The reports were based on interviews with four boys who said they were held by ISIS.

According to CNN, the boys spoke about their harsh living environment, how they were randomly beaten, how they were forced to watch ISIS beheadings and attacks and other things.

Some boys escaped and were released or traded for imprisoned ISIS members. They released about 75 boys, including the four interviewed.

SOURCE: CNN

THURSDAY, NOV. 6

Chain of Craters Road on the Big Island to provide access path for families in lower Puna

Crews are working to uncover the new chain of Craters Road covered from an old lava flow to provide a passage way for the people of lower Puna.

If the lava flow were to cross Pahoia Village Road, Highway 130 and Railroad Avenue, it would be difficult for residents to find a way out of town, according to officials.

The Chain of Craters Road would be the only path to take connecting lower Puna with the rest of the community. Completion of the road is estimated to end next month.

SOURCE: KITV

FRIDAY, NOV. 7

Two killed after Army National Guard helicopter crashes in Idaho

Two crewmen died Thursday night after an Idaho Army National Guard helicopter crashed.

The Apache helicopter was on a training mission when it went down two miles south of the Boise Airport, according to Guard spokesman Col. Timothy Marsano.

Although Marsano said the reasons why this happened are still unknown, the military is investigating the crash site.

SOURCE: CNN

Ige looks to West O'ahu, UH system

Governor-elect says he will work with Lassner, Regents

COURTNEY TEAGUE
STAFF WRITER

Hawai'i's governor-elect David Ige says he is interested in expanding the University of Hawai'i-West O'ahu to provide economic opportunities in other parts of the island.

"I think that West O'ahu has the opportunity to really be a catalyst for creating jobs on the west side and engaging our students in a way that is different than the Mānoa campus," he said on election night.

His focus on UH's newest campus comes as Mānoa is facing budget problems that will likely require action from the new governor and the state legislature in January.

Ige said he has some ideas for the future of the UH system and emphasized that he looked forward to collaborating with President David Lassner and the Board of Regents (BOR) "to really talk about opportunities and challenges that we have in the university system, and what makes the most sense to move forward."

"Most importantly, I think it's really about trying to work together to try and restore the public trust

encouraged the university system to consider the status of UH Mānoa before new development plans are made elsewhere.

"More resources should be given to UHM to help it get back on its feet. UHM is the flagship campus of the University of Hawai'i," Nishihara said.

IMPROVING THE UNIVERSITY OF HAWAII SYSTEM

Ige graduated from Pearl City High School before completing his upper education at Leeward Community College and UH Mānoa. He received a bachelor's degree in electrical engineering and a master's degree in decision sciences.

He credits his background in engineering with shaping the way he approaches politics, and spoke fondly of the university system, describing it as "near and dear to my heart."

"It's about trying to understand the root cause of issues and then really trying to find solutions that work for the broadest range of the community," Ige said. "It's about being committed to community engagement and being willing to listen and find

students and administrators over the years. However, there have been efforts to mend that gap.

"Beyond established meet-and-greets, President Lassner and the Board of Regents would benefit more by walking in the shoes of a typical student for a day," he said.

According to Nishihara, the 102nd Senate of ASUH considers transparency, shared governance and sustainability as its top priorities. Confronting these issues and "empathiz[ing] with students," he says, will ultimately have a positive impact on student interests such as tuition, facilities, student services and other amenities.

Praising the Mānoa campus as "a very, very important part of our efforts to diversify our economy," Ige described himself as "a big proponent of autonomy for the university."

"I think that there are many different areas that the university can play a key role in terms of being a catalyst for economic growth," Ige said.

The Governor-elect expressed interest in the expansion of international student programs, and even improving and promoting the university's film and media program efforts.

Ige commended UH's Innovation Initiative and stressed the significance of the Mānoa campus' role in the community as a premier research institution.

"It does start with the university," Ige said.

TAKING HALF OF THE VOTES

Ige, who previously served as a state senator, will replace his former challenger Gov. Neil Abercrombie in office on Dec. 1.

"Thank you all for stepping up to the challenge. Thank you for your commitment ... All of the yard signs and banners and all the elements that meant so much to the campaign, we want to thank each and every one of you," said Ige in his acceptance speech at Democratic Party headquarters in Honolulu last Tuesday night.

With an approximate 49 percent of votes under his belt, Ige coasted to a win by a 12-point margin over opponent Duke Aiona (R), who finished with nearly 37 percent of the vote. Independent candidate Mufi Hannemann finished the race with only 12 percent of votes.

"You can feel the energy in the room," said Honolulu Mayor Kirk Caldwell minutes after the announcement of Ige's assumed victory at the Democratic Party event.

Ige has been a long-time representative for the state of Hawai'i

in the institution," he said, acknowledging the system's notorious financial hardships.

According to Lassner, UH looks forward to working with Ige.

"We believe he has deep experience, knowledge and appreciation of the University of Hawai'i and our critical role in creating a better future for the people of Hawai'i," he said in an email interview.

Lassner also echoed Ige's sentiments on the potential for UH West O'ahu, saying "there is a unique niche for the campus in providing higher education services that are distinct from what UH Mānoa offers as our flagship research university, and what our open-door community colleges offer."

"UH West O'ahu represents hope and opportunity for what has been one of the most underserved regions of our state," he said.

Although the Associated Students of the University of Hawai'i at Mānoa does not have an official stance on the potential expansion of the West O'ahu campus, ASUH President Stephen Nishihara

common goals that can move our communities forward."

Nishihara said Ige's experience as ASUH secretary will be a "great asset" to the student community.

"It is more effective to actually walk in the shoes of a student rather [than] just to imagine walking in the shoes of a student," said Nishihara, who believes Ige "comes with a perspective and experience that not many governors had."

BUILDING A BETTER UH MĀNOA

Ige stressed that it was critical to first confer with Lassner and the BOR about their priorities, and to work in conjunction with them to find solutions for how to move forward.

"We hope that our conversations with the new Governor and Legislature will result in support for the BOR budget request," said Lassner. Last month, the board approved the system's biennium budget request, which included assistance for UH Mānoa. According to Nishihara, there seems to have been a pattern of disconnect between stu-



COURTNEY TEAGUE / KA LEO O HAWAII'Ī

Ige chaired the state senate's Ways and Means Committee for the last four years. He will have to submit his state budget by Dec. 22.

and has served in the House of Representatives, as well as the Senate.

Fellow Democrat Mark Takai of Aiea secured nearly 52 percent of votes to defeat Republican Charles Djou in the race for the 1st Congressional District House seat. During a press conference following his acceptance speech, Ige said he felt it was an "exciting" night for the Pearl City and Aiea communities.

"Mark and I had been colleagues working to represent [the community] for more than 20 years. I think the community was very excited that we both sought a higher office ... we worked really hard together," Ige said.

GRASSROOTS CAMPAIGN ADVANTAGE

In his race against Abercrombie, Ige made state history by being the first person to defeat an incumbent governor in the primaries. His local, community-oriented approach to politics piqued the interest of many voters who had grown frustrated with Abercrombie's leadership, and sought an alternative.

Caldwell described Ige's efforts as a "strong grassroots campaign," and attributed his success to "positive attitudes" and "lots of hard work."

Ige supporter Lisa Peralta referred to his campaign as "a commitment to character," and held that his conviction to serving the public trumped "personal feelings."

"He stands up for the underdog," Peralta said.

Describing Abercrombie's politics as "capitalistic," retired public service employee and Ige volunteer Madeline Neely was also awestruck by Ige's honesty and humility.

"I'm a Native Hawaiian, and for me, he was the best of the two choices," Neely said.

Since the primary election, Ige maintained Gov. Abercrombie has been "gracious," and said his one-time opponent had "offered to help in the transition" from senator to governor.

"I really look forward to talking with him as we get into more of the details of assembling a team and moving forward," Ige said.

ESTABLISHING A CABINET

According to Ige, selecting a team of individuals "to help improve government services ... in the most cost-efficient manner" will be his first priority as governor.

"We are interested in finding the most qualified people, regardless of whether they were involved with the campaign or not," he said.

He stated that he would be looking for people who "share the core principles about open and honest communication," and "want to engage the community, and really view the community as part of the solution rather than part of the problem."

NEWS

news@kaleo.org
@kaleohawaiiNoelle Fujii
News EditorMeakalia Previh-Liu
Associate News Editor

Campus continues to expand its international engagement

NOELLE FUJII
NEWS EDITOR

Aligning with the university's internationalization initiative, the UH Mānoa campus continues to foster the diversification of the student body.

According to UH's Strategic Direction for International Engagement for 2010-2020, the 10 campuses will "embark on a decade-long campaign to make the University of Hawai'i a preeminent center of international learning."

"Some of the head figures here at UH Mānoa are just really spearheading the international initiative," said Sara Otis, international exchange specialist for the Mānoa International Exchange mix. "In addition to exchange agreements, we're going to see more combined degree agreements. So like 3+2 programs are starting to crop up, so different types of partnerships between UH Mānoa and overseas universities ... Things are growing."

She added that bringing international students to the campus enhances the environment and exposes local students to diverse perspectives, cultures and ways of life and learning.

AN EXCHANGE OF STUDENTS

The 3+2 program Otis mentioned is a program where students would start their first three years at their home university and then come to the campus to finish their undergraduate degree and complete their master's degree.

According to Xiaoxin Mu, 3+2 program coordinator for the Office of the Vice Chancellor for Academic Affairs, the program was launched in April 2014. Currently, there are five of these 3+2 agreements, which exist between Chinese institutions such as Zhejiang University and Nankai University and the campus.

"UHM academic units who participated are public health, philosophy, engineering, CTAHR and meteorology," she said.

In addition, there are six more agreements that are under review by campus academic units or their Chinese partners. Mu said it's expected that the first group of 3+2 students will start their first semester in fall 2015.

Senior Mai Shiomi participated in one of MIX's programs at Kyoto University. She thinks that coming to Mānoa is a good experience for any student since the campus is so culturally diverse.

"Keeping the campus diverse, I

think, is important for us students that live here," Shiomi said. "It's important for us."

UH'S INTERNATIONALIZATION STRATEGIC DIRECTION

UH's International Engagement Strategic Direction states that the university aims to be a center for international learning, which will benefit the campus community.

According to the strategic direction, a primary purpose of the university is to prepare students to be internationally-engaged citizens that foster global perspectives.

Joanne Taira, senior executive for the system's International and Strategic Initiatives, said UH has an "uncommonly diverse student body."

"Keeping the campus diverse, I think, is important for us students that live here ... It's important for us."

— MAI SHIOMI
MIX PARTICIPANT

"No one ethnic group is a majority," Taira said in an email interview. "Many of our students have heritage ties to an array of cultures, regions, languages. Through its programs in Hawaiian Studies, UH is a leader in the revitalization of indigenous languages and culture, and has much to share."

In addition, UH also fosters international collaborations academically.

Over the summer, UH launched its system's international webpage to inform both internal and external audiences about active international engagement in the system and to drive viewers toward campus international webpages.

SENDING STUDENTS ABROAD AND BRINGING SOME IN

For about 10 years, MIX has sent and taken students from overseas for the fall, spring and summer semesters. With the MIX program, UH Mānoa students pay campus tuition when they go overseas.

About 150 to 200 Mānoa students participate in the program each year, according to Otis, adding that the program, especially the summer portion, is growing.

Students have the option to go to any of the 80 universities in 25 countries that UH Mānoa has a partnership with.

"Really that's just about a fraction of the international partnerships that UH Mānoa has," Otis

said. "There are hundreds of international partnerships with this university, but it's only that many that have the student exchange."

MIX's slogan is "come to Mānoa, see the world," according to Darrell Kicker, international exchange coordinator.

"We really want that to be the message - that you don't have to leave Hawai'i, necessarily, to really experience the whole world. Because we're really bringing everybody here," he said "For local students, it's really a chance just to meet people, make friends all around the world, and get the different perspectives and outlooks that you may not get just from your local upbringing."

MIX will hold a fair on Nov. 13 in the Heritage Reading Room in Sinclair Library from 11 a.m. to 2 p.m. to expose more students to the program, according to Otis.

"We're hoping it's a really open, friendly event for people to get some information and also talk to other students who have already gone abroad and can offer their advice," she said.

There will be tables for the various partner universities as well as an audio-visual display. Otis said there will also be several iPad stations for students to get peer assistance navigating the MIX website and searching for universities.

"The MIX Fair has always been highly interactive, but we hope this new multimedia dimension will take that interaction to the next level," she said.

MORE INFO

MĀNOA INTERNATIONAL EXCHANGE FAIR

LOCATION

Sinclair Library Heritage Reading Room

HOURS

11 a.m. - 2 p.m.

WEB

manoa.hawaii.edu/mix/



IKAIKA SHIVELEY / KA LEO O HAWAII

In 2013, there were 49 major vehicle thefts on campus.

DPS to increase patrols in light of recent moped thefts

ALEX BITTER
EDITOR-IN-CHIEF

UH Mānoa's security force is advising students to use adequate locks and chains for their mopeds after four were stolen on campus in three days.

Sarah Rice, community programs manager for the university's Department of Public Safety (DPS), said the department is also encouraging anyone who sees suspicious activity involving mopeds to contact DPS. The cautions come after thieves stole seven mopeds and one vehicle on campus between Oct. 29 to Nov. 6. Thieves also stole a maintenance cart from the UH Mānoa Landscaping Office.

As of press time on Nov. 9, two vehicles, including the cart, had been recovered.

On Nov. 6, DPS announced increased patrols around parking areas for mopeds on campus. The department also said its officers

would pass out educational material to students and other riders.

Around 7:45 p.m. on Nov. 6, DPS responded to a call regarding suspicious individuals near two mopeds parked near the East-West Center, according to a DPS officer.

The officer described a chase involving three individuals that occurred between the center and Pacific Ocean Science and Technology building parking lot. All three fled the area through a pathway behind the Imin Center, leaving at least one moped on the grass near Hale Mānoa, according to the officer.

Honolulu Police and DPS apprehended one male on the northern side of the Imin Center, but released him around 8:20 p.m. after not being able to identify him.

Rice said the department is still investigating the night's events. As of Friday, no arrests had been made, she said.

MORE INFO

HOW TO SECURE YOUR MOPED

- Lock your moped, even when leaving it alone for a few minutes
- Use a steel U-lock or smaller lock with a chain
- Make sure the chain cannot be lifted over any part of the moped when locked
- Take belongings out of storage areas on the moped
- Report suspicious activity to DPS at (808) 956-6911



Rise to the head of the class.

Did you know the Coast Guard has a scholarship program that will cover tuition and fees, pay you a monthly salary, and guarantee you a career after graduation? Open to students at Minority-Serving Institutions (MSIs), the College Student Pre-Commissioning Initiative (CSPI) Scholarship Program is giving college juniors and seniors hands-on training, leadership experience, and unparalleled benefits. After completing CSPI, graduates are guaranteed careers in fields like humanitarianism, search and rescue, and many more.

Visit GoCoastGuard.com/CSPIScholarship to learn more.

COAST GUARD
BORN READY



GoCoastGuard.com/CSPIScholarship

Campus sees 900 substance violations

Campus officials weigh in on safety precautions

ANGUSINA CAMPBELL
STAFF WRITER

The campus saw 600 "liquor law violations" with no arrests and 300 drug violations and two drug arrests in 2013, according to the 2014 Annual Security and Fire Safety Report released by the campus Department of Public Safety.

"Alcohol is usually a common denominator in many of the things that happen on campus," Sarah Rice, Department of Public Safety (DPS) community programs manager at UH Mānoa, said. "Sometimes [alcohol offenses committed under jurisdiction of Student Housing Services] are referred for arrests; it's a lot fewer than offenses, of course."

This compares to zero violations and arrests at two campuses of a peer university, the University of Illinois. The Chicago campus reported less violations but more arrests than the University of Hawai'i at Mānoa.

THE INCIDENTS

On Sept. 9, the Star-Advertiser reported that Abel Pellegrino, an 18-year-old sophomore, passed away as a result of injuries sustained when he jumped from the stairs that connect Johnson Hall B and Gateway to lower campus.

Pellegrino had ingested delta-9 tetrahydrocannabinol (an active ingredient in marijuana) and LSD, according to the Department of the Medical Examiner's autopsy report.

Ka Leo's Crime Beat reported cases of underage drinking and intoxication on Sept. 11 at the Stan Sheriff Center and on Sept. 12 at Hale Aloha 'Ilima as well as a party involving alcohol at Hale Wainani on Sept. 28.

AID AND PREVENTION

According to Rice, DPS takes part in educating students on responsible alcohol consumption and awareness.

"We do various community outreach events throughout the year, and part of our awareness campaigns are centered on safety tips and practicing safe habits. That is, of course, one of the main things that we focus on," she said. "What's really important to us is that students are making safe decisions."

Rice also mentioned UH's Alcohol and Other Drug Education (AODE) Program, located at the Student Health Center at the Queen Lili'uokalani Center. "We refer students to that when

necessary," Rice said.

AODE Program offers different services and programs for students specifically regarding drugs and alcohol, according to UH Mānoa's University Health Services (UHS) website.

Brief Alcohol Screening and Intervention for College Students (BASICS) allows individuals to speak with a counselor and receive guidance regarding their substance usage.

Mānoa Alcohol Project (MAP) educates students about alcohol and "healthy alternatives," according to their Facebook page.

The Lokahi Program offers a presentation on alcohol and drugs geared toward individuals in a classroom setting.

If individuals are not comfortable with in-person assistance, they may evaluate their alcohol intake online through questionnaires provided on the UHS website.

However, according to Jennifer Blakeley, a senior majoring in Travel Industry Management, UH should focus more on publicizing the information it has.

"I feel like they have the education tools out there; it's just that students aren't necessarily aware of it, so I mean, I think they should do more to get the information out there to students," Blakeley said.

MORE INFO

WHAT IS ALLOWED

- Residents 21 years old or older may consume alcohol in their rooms, provided all occupants of the room are of age
- Ba-Le serves alcohol starting at noon, and individuals who are of age may consume alcoholic beverages
- Special permission is required to serve and consume alcohol on campus or at university-sponsored activities

WHAT IS NOT ALLOWED

- Drinking games and containers such as kegs or water jugs are prohibited, as well as alcohol abuse
- Possession, sale and usage of illegal drugs and controlled substances
- Medical marijuana
- Drug-related paraphernalia in residential areas
- Disturbances created by individuals while under the influence of drugs



DDWILMOTH / FLICKR

The Rainbow Papaya was commercialized in 1998.

GMO measure could hurt Maui farming, UH professor says

KEVIN DENEEN
CONTRIBUTING WRITER

PAPAYA

In the 1980's, the University of Hawai'i began developing a papaya variety resistant to the ring-spot virus, according to the Hawai'i Papaya Industry Association's website.

These new genetically modified papaya plants — called Rainbow Papaya — are no longer susceptible to infection, allowing farmers to cultivate the fruit even when the fruit is widespread, according to GMO Compass.

"Now that the initiative has passed, Hawai'i's exporting of papaya to the mainland and Japan will struggle," Singleton said.

According to a United States Department of Agriculture press release, the Government of Japan approved the shipment of the Rainbow papaya from Hawai'i to Japan in January 2012.

In 1996, annual sales for Hawaiian papayas reached \$15 million. In 2010, while U.S. exporters awaited Japan's approval to ship the Rainbow papaya, sales dropped to \$1 million, according to the release.

AN EXPENSIVE CAMPAIGN

The SHAKA (Sustainable Hawaiian Agriculture for the Keiki and the 'Āina) Movement, the group behind the GMO initiative, wants "definitive testing here in Hawai'i Nei so that we know if our public and our envi-

ronment are safe," according to its Nov. 4 newsletter.

The organization also noted that voting against the measure would harm the environment and people.

According to an article in the Honolulu Civil Beat, the political campaign attracted nearly \$8 million from opponents, such as Monsanto and Dow AgroSciences.

However, the two companies are not yet accepting defeat.

Both issued statements following the measurer's passing, saying the referendum is invalid and encourage an ongoing dialogue concerning the issue, according to an article in Civil Beat.

"It is going to be somewhat difficult for them in part because this is an issue from the people themselves," Political Science professor Collin Moore said. "The word of the people is pretty clear."

He added that the issue mobilized many young, progressive pro-environmental voters who were concerned with GMO practices and the health risk it poses, making for a higher turnout of this group.



Like us on **Facebook**
KTUH Honolulu

Follow us on **twitter**
@KTUH

Follow us on **Instagram**
@ktuh_fm

KTUH.ORG

956-5288

2445 Campus Rd.
Hemenway Hall #203,
Honolulu, HI 96822

Hours of Operation:
Mon-Fri 9 AM - 5 PM

▼▼▼
SIGN-IN TO PERFORM
AND/OR BRING A FRIEND
TO LISTEN!
▼▼▼
SPONSORED BY
UHM LIBRARY
▼▼▼
LIGHT SNACKS WILL BE
SERVED

COME AND JOIN US FOR UH MANOA'S **HAM SLAM**

HAM SLAM TAKES PLACE ON 2ND THURSDAYS OF THE MONTH- **SEPT. 12TH, OCT. 10TH & NOV. 14TH @ 7:30PM** IN THE **HAMILTON LIBRARY ALCOVE**

SUPPORT OUR TALENTED PERFORMERS IN OPEN MIC SESSIONS FOR SLAM POETRY AND MUSIC WITH NATIONAL POETRY SLAM LEGEND, KEALOHA!

FUNDED BY THE STUDENT ACTIVITY PROGRAM AND FEE BOARD AND THE UNIVERSITY OF HAWAII MANOA LIBRARY.

11/6 11/14 11/15 11/17

GREEN-OUT NIGHT | **POLYNESIAN WARRIOR TATTOO NIGHT** | **STAR WARS NIGHT** | **MIDNIGHT BLACKOUT**

THE MANOA MANIACS | **FREE FOOD** BEFORE EVERY GAME | TAILGATE AT COCONUT GROVE - 5PM

ANSWER THE CALL

R R I I N N I N G

AD REP REQUIRED

R R I I N N I N G

KA LEO IS NOW HIRING

AD REPRESENTATIVES

KALEO.ORG HEMENWAY 107 | **THE VOICE KALEO**

Anna's Events!

Fri. 11/14 - Goodfoot Jive Nene, Josh 86, & The Pressure
AfroFunkSoul, Ska, Reggae, Electronica & more!

Sat. 11/15 - Nephelim Halls - Ground Zero
Industrial Goth Punk Metal

Tues. 11/18 - Super Star Karaoke
Rock out on Anna's stage with free songs!

Recurring Events:

Sun - Sweet Reggae Sundae
w/ DJ Luke D

Mon. - Star 101.9's Unsigned Hawaii

Wed. - Comedy U stand up.

Thurs - Thumpin' Thursday EDM

2440 S. Beretania
946-5190
www.annaobriens.com
facebook.com/annobriens

Kennedy Theatre 2014-15 Season

big friendly giant

November 14, 15, 22 at 7:30pm
November 22 at 4:30pm
November 23 at 2pm

Adapted for the stage by David Wood.
From the book by Roald Dahl.
Directed by Mark Branner.

the BFG
big friendly giant

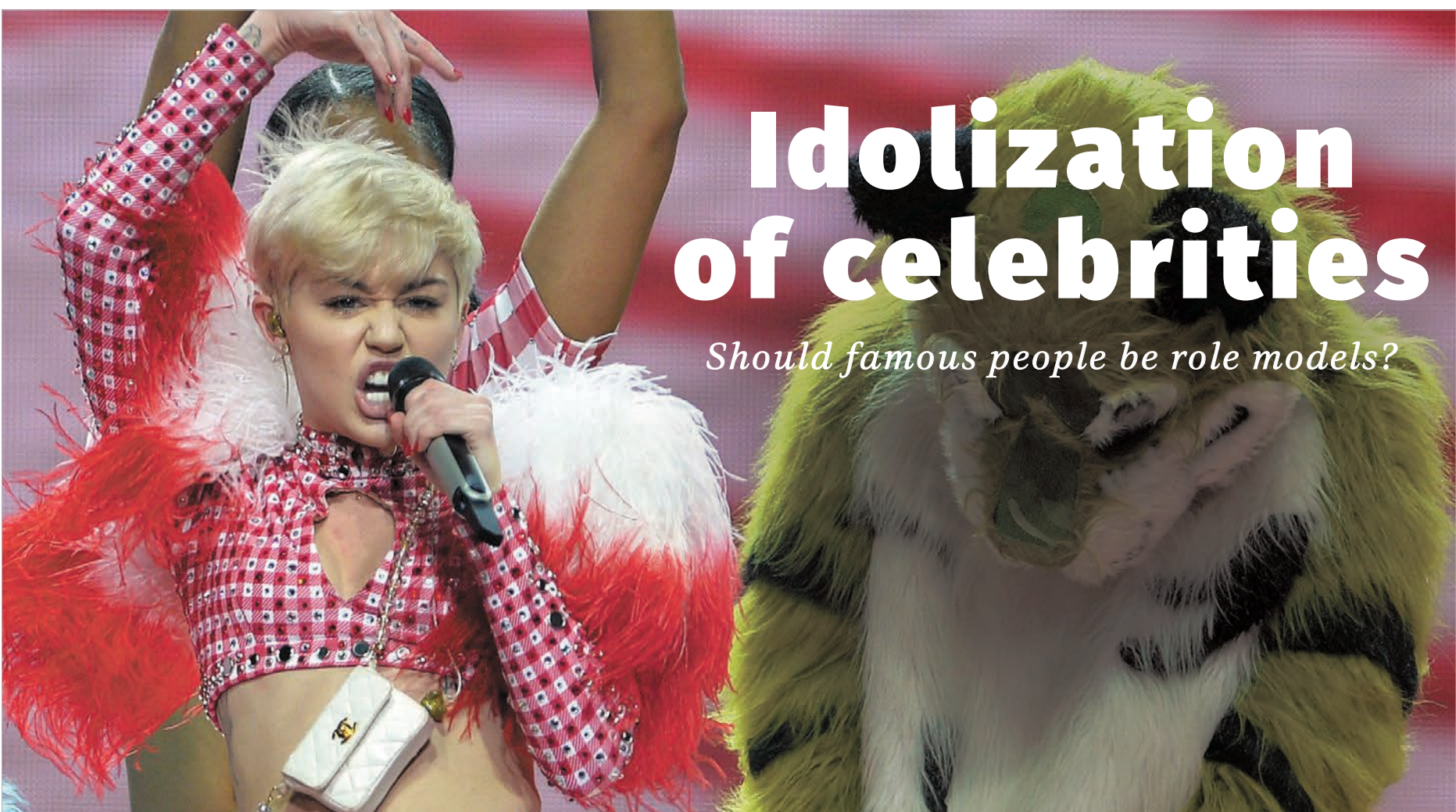
A 24-foot-high giant teams up with a little orphan girl to save the children of England!

UHM Student Specials
(UHM valid Fall 14 ID required)

- \$8 to any performance
- \$5 Throwback Saturday - Nov. 22 at 4:30pm

Supported by Student Activity Fees.

Tickets on sale now at www.etickethawaii.com or (808) 944-2697, and at Kennedy Theatre Box Office.
Visit www.hawaii.edu/kennedy for more info!



Idolization of celebrities

Should famous people be role models?

SCOTT SHARPE / MCT CAMPUS ▲

Celebrities have become closer and more personal with their fans with the rise of social media.

ABBYGAIL SADOY
STAFF WRITER

Today's celebrities are now able to connect with their fans on a global scale with the explosion of social networking in the past few years. With celebrity lives accessible by fingertips, parents often look towards celebrities to act as role models for their children. However, celebrities shouldn't be expected to be role models.

In a single tweet or post, fans can read their favorite celebrity's thoughts and opinions within seconds. No longer limited to TV interviews and press conferences, celebrities can now respond to a fan's question instantly in 140 characters, coupled with a hashtag or two.

Former NBA player Charles Barkley sparked controversy back in 1993 when he said, "I am not a role model. I am not paid to be a role model. I am paid to wreak havoc on the basketball court. Parents should be role models. Just because I dunk a basketball doesn't mean I should raise your kids."

More than 20 years later, parents still look toward public figures as a third parent for their children.

TV CHARACTER VS. REAL LIFE

No one received more backlash with this issue more than Miley Cyrus. After her controversial performance at the 2013 Video Music Awards, Cyrus stated in *Ok! Magazine*: "I don't put pressure on myself to be a role model, other

than hopefully inspiring people to be good and to treat people well."

This comment came after the public was outraged by her performance being vulgar and racy.

The public became upset because she was not like the Hannah Montana character that she played on Disney Channel. However, she was paid to play the character,

The main role models should be in the community such as parents, teachers, doctors and firefighters.

it does not reflect her real personality. This misinformed illusion is what sparked the controversy.

Celebrities are meant to entertain and shouldn't be expected to live up to the idea of what parents think they should be. Of course that's not to say bad actions should be condoned or left without consequences, but we must understand one cannot be expected to live a life without going through bad periods.

With people taking pictures and videos of their every move, celebrities' personal lives are monitored and scrutinized more than the average person. "I am not a role model," former Nickelodeon star Jennette McCurdy stated. "I don't claim to be, and I don't want to be."

It's not that celebrities can't be role models — it's that they shouldn't be expected to be one.

Celebrities most certainly have a choice. After several stints of rehab and recovery, former child star Demi Lovato stated that she "is a role model, but not perfect." It's easy to see how a celebrity can often be expected to be a role model. It's almost as if they're being turned into superheroes for kids.

PURELY TO ENTERTAIN

It is understandable to hold politicians to a high standard of conduct because it is their job to represent the people. Celebrities such as Miley Cyrus or Justin Bieber are not representing anyone but themselves. They are entertainers. Children do look up to them, but celebrities shouldn't be worried about making the wrong choice because of how they'll look like — although this should always be in consideration.

Giving back to the community, donating to charity or being a spokesperson of a cause is something they can do because they have the privilege and power to, but it's not something that should be required or expected of them.

One might argue that "with great power, comes great responsibility" holds true for celebrities.

The amount of money that they make, coupled with the amount of devoted followers on their social media accounts, make them strong and persuasive global icons.

PARENTS OVER CELEBRITIES

However, I would argue that parents still have the most influence over their children. Parents have power over their education, cultural influences, physical health and the power to say "no."

Most need to realize that the lives of celebrities are scrutinized and sometimes blurred between fact and fiction.

Lessons and values should be taught through parents, not a screen. Of course there's nothing wrong with having a child look up to a celebrity, but it's important for parents to discern acceptable and unacceptable behavior from that celebrity to their child. It is the parent's role as the child's guardian to instill their children with values that are acceptable.

The fact of the matter is that parents can't control the actions of a celebrity nor can they prevent exposure to their bad behavior. Parents need to encourage their children to not aspire to be someone, but to aspire to do something.

Parents telling their kids to "be like her/him" are setting standards that no famous person can live up to. The main role models should be in the child's community such as parents, teachers, doctors and firefighters. These are people who can

physically influence children.

In an interview with Piers Morgan, actress Whoopi Goldberg called out on parents who look toward celebrities as role models for their children, "The truth of the matter is I should not be your kids' role model, you should be your kids' role model, but you don't want to be your kids' role model because even you can't even live up to it, so back off me."

Goldberg reiterated that celebrities could say they are role models, but must understand there can be fallout. "Famous people should consider themselves whatever they want to consider themselves, but should know that the consequence of saying 'I am a role model,' is X, Y, Z," Goldberg said.

If someone finds a celebrity to be a "negative role model," he or she shouldn't listen or pay attention. If celebrities are expected to be pristine and something they do is deemed "unacceptable," it's best to cut it off and not pay attention to it. Or one can take the situation as an opportunity to learn what not to do.

Celebrities should not be criticized because of their influence to their fans and should not be seen as a role model more than what they actually are — singers, actors, performers and entertainers.

★ COVER STORY

A 'giant' of a show arrives at Kennedy Theatre

'The BFG' promises a 'giant' amount of laughter

SOURCE: KENNEDY THEATRE PUBLICITY

Kennedy Theatre brings a Roald Dahl classic to life.

DANIELLA REYES
SENIOR STAFF WRITER

The newest Theatre for Young Audiences (TYA) production at Kennedy Theatre is "The BFG," directed by Mark Branner, assistant professor at UH Mānoa.

"The BFG" is adapted from a novel of the same name written by children's author Roald Dahl, who is known mainly for "Charlie and the Chocolate Factory." The play is about a precocious young girl named Sophie, played by Janna Rose Shields, who wants to act out "The BFG" at her birthday party. She and her friends work together to weave a tale of equal parts adventure and hilarity.

Branner most recently directed "Eddie Wen' Go" at The Hawai'i Theatre Center this September, and received a Po'okela Award for his work directing "The Very Persistent Gappers of Frip" at Kennedy Theatre last spring. The original plan was to do "A Life

in the Woods," a retelling of the "Bambi" novel, but Branner said that his distinct memories of his kids "falling off the sofa with laughter" as he read them "The BFG" was what convinced him to switch plays.

"The BFG" is probably less well-known than some of Dahl's other works like "Charlie and the Chocolate Factory," "Matilda" or "James and the Giant Peach," but Dahl's trademark sense of humor and ability to engage young audiences is on full display in this production.

According to the press release, "The BFG" will have plenty of support from Master's in Fine Arts (M.F.A.) students in the Theatre for Young Audiences track, both onstage and behind the scenes. From costumes to lighting, the work of these M.F.A. students will be on full display during the show's run. Actress Janna Rose Shields, last seen in Kennedy's "Blithe Spirit," said that a

TYA show is not like the regular adult-oriented shows at Kennedy.

"With kids, you really want to make it huge and colorful and wonderful – they just want to know that the story is real," Shields said.

Mature audiences can enjoy the play too, as Dahl's sharp wit and wild imagination are at the heart of this play. Branner said that TYA is important because it "cultivates a sense of wonder" in audiences, no matter what age.

The production plays with shadows and puppets to create a "giant" world in this story within a story. Both Shields and Branner agree that one of the most challenging aspects of the production is working with the puppets, constructed by TYA M.F.A. students Margot Fitzsimmons and Aubrey Watkins. While last year's "Gappers" were small orange hand puppets, the creations in "The BFG" promise to be something totally different in order to convey the size and scale of the story.

"It's gonna be an awesome surprise, and very visually entertaining," Shields said.

Also, the relatively small cast of eight are almost all doubling up on roles, adding another creative layer to the visuals.

Do we need to read the book before watching the play? Branner said no. Audiences who are unfamiliar with the book will still get a lot out of it, though it might be useful to read the book beforehand just for the additional background.

Before the show starts, audience members will get the chance to learn the craft of shadow puppetry. These free pre-show events will take place at 6:30 p.m. on Nov. 15 and 22.

"The BFG" is recommended for all audiences, especially lovers of wondrous storytelling and clever visuals who possess a "giant" sense of humor.

//////////////////// Ka Leo O Hawai'i

MORE INFO

THE BFG

WHERE

Kennedy Theatre Mainstage

WHEN

Nov. 14, 15* and 22* at 7:30 p.m.
Nov. 22 at 4:30 p.m.
Nov 23 at 2 p.m.

* Free pre-show event with the director and cast at 6:30 p.m.

TICKET PRICES

\$20 Regular
\$18 Seniors / Military / UH Faculty and Staff
\$15 Non-UHM students
\$8 UHM Students with valid UHM photo ID

Throwback ticket prices (Nov. 22 at 4:30 p.m.):

\$15 Regular
\$10 Discount
\$8 UHM Student with valid ID

Neo-Futurists and truth at Kennedy Theatre

DANIELLA REYES
SENIOR STAFF WRITER

Kennedy Theatre's Late Night Production's "30 Neo-Futurist Plays from 'Too Much Light Makes the Baby Go Blind' (30 Plays in 60 Minutes)" is going to deliver just what it advertises – 30 plays delivered in the space of one hour that will challenge audiences and give them a totally unique theater experience,

according to directing candidate and director of the show, Kevin C. Berg.

Just what is Neo-Futurism? Berg said that the four central tenets of the Neo-Futurist movement are grounded in reality: "You are who you are, you are where you are, you are doing what you're doing and the time is now."

Unlike most theatre productions that rely on elements of escapism and the suspension of belief, "Too

Much Light" aims to be raw and real. The actors aren't playing a role or a character, and they're not trying to make you believe anything. Props are exactly what they claim to be – a piece of paper used as a birth certificate is actually a genuine certificate of birth. In Neo-Futurism, there is no past or present, because plays happen only in the moment.

The plays range from 45 seconds to over three minutes, and actors

will attempt to complete all 30 plays in 60 minutes. To discuss them in depth would give away much of what makes them interesting, but the plays in "Too Much Light" cover everything from slapstick to tragedy to musical theater.

The way the show is set up is almost as interesting as the plays themselves: Audience members are handed a "menu" of 30 plays and are free to shout out the num-

ber of a play that they would like to see performed. In the original Chicago production of "Too Much Light," there was a constant rotation of plays, with the actors themselves writing new content to be performed every week. This approach to playwriting has resulted in about 550 plays published.

continued on p.12 ▶

FEATURES



MOST VALUABLE TACO: COCINA

Although Cocina is usually pricey, their \$3 Taco Tuesday offerings are well worth the price. Cocina offers a variety of taco options, like chipotle pork taco with adobo sauce and queso fresco. The Tuesday menu is always different, giving the opportunity to try something new each week.

If you go with a large group, make sure to order the fried avocado (\$7). It is spicy, soft on the inside, crunchy on the outside and easy to share, making it a delicious appetizer as you await your tacos.

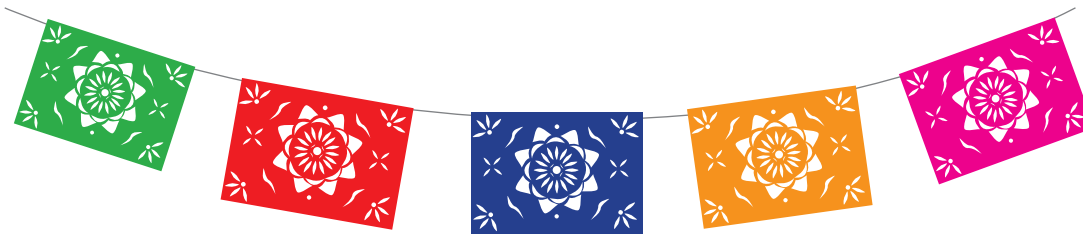
Cocina is a small venue and seating is limited, but the service is fast so you don't have to wait long. Don't forget that Cocina is B.Y.O.B., and Bevy next door offers a range of drinks.

MORE INFO
COCINA

LOCATION
667 Auahi St.

HOURS
MON-SAT: 11 A.M. - 9 P.M.
CLOSED SUNDAY

WEBSITE
COCINAHAWAII.COM



Tuesdays to taco 'bout

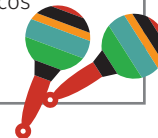
*The rundown of the best
Taco Tuesday deals near UH*



BIANCA BYSTROM PINO
STAFF WRITER

We may be oceans away from an authentic Mexican taquería, but there are shops on-island for students to hanker their taco cravings. Thankfully for broke college students, these shops also offer discounts on their tacos every Tuesday.

Here are five places students can visit to spice up their Tuesdays.



BEST ATMOSPHERE: SERG'S

Serg's offers one of the cheapest Taco Tuesday deals near campus. You can take your pick from chicken, pork or beef for \$1.50, or fish for \$2. Unfortunately the taco is not as substantial and you may find yourself buying several tacos to fill your stomach. But what we can't find in the taco is made up by the atmosphere of Serg's outdoor seating and the Mexican music that is always playing. Get there early because seating may fill up. It's a great place to meet up with friends and you are bound to run into classmates.

MORE INFO
SERG'S

LOCATION
2740 East Mānoa Rd.

HOURS
DAILY: 11 A.M. - 9 P.M.

CONTACT
(808) 988-8118

FRESH FISH: SOUTH SHORE GRILL

This shop, located in Diamond Head, has fish tacos for only \$2. The fresh fish comes loaded with vegetables such as cabbage and tomato. Don't make the trip if you are looking for a light taco. For those who are not fans of seafood, they offer chicken in place of the fish.

Unfortunately, if you don't get there early it is difficult to find seating. Luckily, the beach is nearby, so take your fish tacos to the ocean and watch the sun set over the waves.

MORE INFO
SOUTH SHORE GRILL

LOCATION
3114 Monsarrat Ave.

HOURS
DAILY: 10:30 A.M. - 9 P.M.

WEBSITE
SOUTHSHOREGRILLHAWAII.COM

FRESHEST TACO: VERDE KAIMUKI

Students know Verde Kaimuki as the stand on campus that serves only burritos, but its restaurant has a more expanded menu, offering \$1.75 street tacos on Tuesdays. They have delicious tortillas, great fresh pico de gallo and a choice of six different in-house sauces. If you get thirsty, order horchata, a sweet drink that will cool the tongue after each spicy bite.

MORE INFO
VERDE KAIMUKI

LOCATION
3607 Wai'ālae Ave.

HOURS
MON: 7 A.M.
TUES-FRI: 7 A.M. - 8 P.M.
SAT: 8 A.M. - 8 P.M.
SUN: 8 A.M. - 3 P.M.

WEBSITE
VERDEKAIMUKI.COM



BEST TACO TUESDAY DEAL: DOWNBEAT DINER

The Downbeat Diner is known for its burgers, milkshakes and fries, its Taco Tuesday specials are great for students on a budget. While it doesn't match up to Cocina's value and quality, the \$3 tacos are worth the trip to Chinatown. Pick from ground beef, chicken and bean 'n cheese. Each selection comes with vegetables on top, as well as sour cream and salsa verde on the side.

Try pairing your tacos with \$3 margaritas made from scratch and \$6.50 nachos. If you are still hungry and want something sweet, order the Salted Chocolate Cookie Sundae for \$5.

MORE INFO
DOWNBEAT DINER

LOCATION
42 N. Hotel St.

HOURS
MON: 11 A.M. - 12 A.M.
TUES-THURS: 11 A.M. - 3 P.M.
FRI-SAT: 11 A.M. - 4 P.M.
SUN: 10 A.M. - 11 P.M.

WEBSITE
DOWNBEATDINER.COM

SOURCE: FREEPIK; ILLUSTRATION BY JOELYN DALIT / KA LEO O HAWAII; [ALL PHOTOS] BIANCA BYSTROM PINO / KA LEO O HAWAII

Late Night Production delivers 30 plays in 60 minutes

from p. 11

Kennedy's production won't have actors writing their own plays, instead choosing them from already-published ones. The plays usually have some sort of personal connection to the actors, who may only rehearse them once or twice before performing it live "to give it that raw-ness and new-ness," Berg said.

True to the ephemeral nature of the show, the "menu" of plays is constantly changing, with different plays selected for each of the two weekends that the show runs. The order of the plays can affect the overall performance. An actor covered in electrical tape for one performance must then stay covered in it for the rest of the show. "Theater is the medium to communicate in the moment," Berg said.

He and his actors are trying to bring something new to Hawai'i audiences. Something that will amplify whatever they bring to the table.

"If audiences expect to have a good time, they'll have a good time," Berg said. "If they come in expecting a new, expressive form of art, they might get that too."

Emphasizing audience participation, improvisation and above

all, truth between performers and their audience, "Too Much Light" promises to be quite the experience. Set in the intimate space of Earle Ernst Lab Theatre - it's strange, tragic, funny and raw. When the runtime of one play is nearly as long as the time it takes to say the entire name of the show, you're in for an interesting time.

MORE INFO

30 NEO-FUTURIST PLAYS

LOCATION
Earle Ernst Lab Theatre

WHEN
November 14, 15, 21 and 22
11 P.M.

COST
\$10 General admission
\$8 Seniors/Military/Staff
\$5 UHM Students with valid UHM photo ID

//////////////////// Ka Leo O Hawai'i

Game of Thrones

The number one spot to do the number two on campus

HENRY MA
CONTRIBUTING WRITER

One of the worst parts of being stuck at school is using the public bathrooms around campus. You never know what you will find within the atrocious stalls, and doing your business in a crowded bathroom is never relaxing. To make your bathroom trips a little less dreadful, here is a list – not in order – of the best and worst bathrooms around campus. Ratings for each bathroom will be based off of three categories: peacefulness, spaciousness and cleanliness.

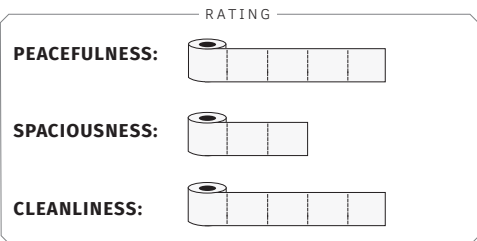
NOTE: Keep in mind that a man wrote this, and bathroom experiences for each location may be different for the ladies' room.

THE BEST



Hawai'i Hall

One of the most peaceful places to take a dump on campus are the bathrooms in the Hawai'i Hall building. They are a safe haven from all of the crowded and filthy bathrooms littered throughout campus. Their interior is well-kept and spacious for a fairly small bathroom, and the cool and cozy atmosphere makes this bathroom one of the few gems on campus. It's nice to quietly do your business alone, and this bathroom lets you enjoy just that.



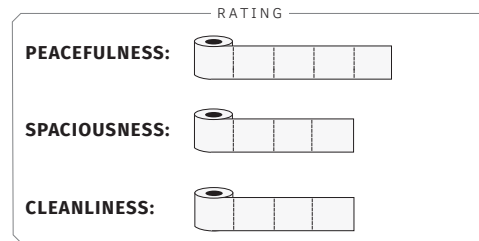
William S. Richardson Law Library

One of the most elusive bathrooms on campus, is the William S. Richardson Law Library. The bathroom in this building is a pleasant place to poop in peace. you can expect a very peaceful and quiet atmosphere, and the janitors do a really nice job in keeping it nice and clean. As you do your business, you can enjoy reading informational posters that the library puts up on every bathroom stall door.

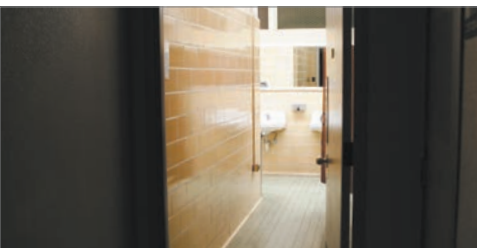


Hamilton Library
UPPER FLOORS

Hamilton Library is best known for its chilly atmosphere, and the bathrooms in the library are at the perfect temperature between warm and cold. The first floor bathroom is low quality, but the higher you go up the building, the more peaceful and clean the bathrooms get. You can enjoy your time sitting on the toilet for as long as you like due to how calm and cool the bathrooms normally are.

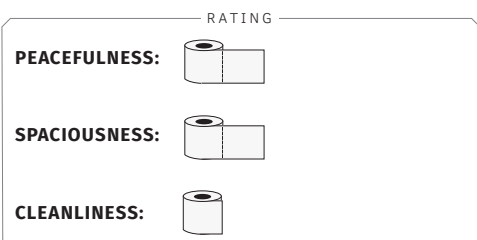


THE WORST



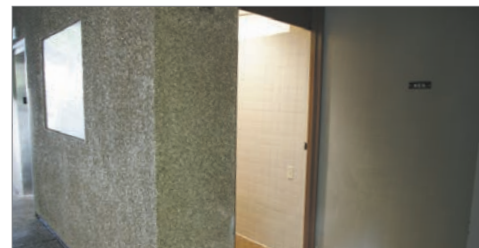
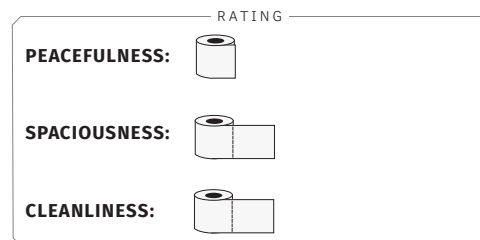
Hemenway Hall
NEXT TO BA-LE

One of the dirtiest bathrooms on campus is located behind Hemenway Hall. This bathroom is plagued with mosquitoes and lizard droppings, making your experience here a not-so-pleasant one. Small with only a couple of stalls, there's a good chance that you might run into a rogue, un-flushed toilet. Only use this bathroom as a last resort. But even then, I would suggest for you to take the extra steps to find somewhere else to go.



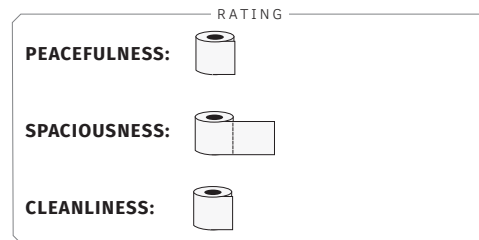
Shidler Building
FIRST FLOOR

It comes as no surprise how crowded the bathrooms at Shidler can be. When you try to be clever and go during normal class times, the bathrooms are almost always closed for cleaning – forcing you to find another place to do your business. With people rushing to get to class on time, you usually come across stalls that look as if the person before you had no idea where to aim on the toilet. Get ready to layer the toilet seat with toilet paper beforehand if you are bold enough to use it.



Moore Hall
FIRST FLOOR

The tightly-packed stalls in the bathroom are usually filled with writing from past inhabitants who braved the urine-stained toilets. There's no privacy at all as there is a constant flow of people going in and out of stalls – occasionally forgetting to flush so that the next unfortunate victim would have to endure not pulling their eyes out of sheer disgust from the sight of what was left behind. Please avoid using Moore Hall's bathrooms at all costs.



SIDEBAR

THE BYTE

reset game

awake. head throbbing. vision blurry.
the room is cold.
the fire is dead.

SOURCE: A DARK ROOM

A DARK ROOM

DAVID HERMAN
SPECIAL ISSUES EDITOR

While billion-dollar companies stumble over each other to set new graphics benchmarks for Michael-Bay-esque action hero games, there remain a quiet few who forego kitsch to instead bring us something grand. "The Dark Room" can be best described as a minimalist, 4-bit, resource management RPG with a dark, post-apocalyptic atmosphere.

Cereal boxes have better, more detailed images than this game, and yet that doesn't seem to matter. Where this game excels is in its mood and simplicity. While only wielding a handful of words and a monotone background, the game works wonders with a brevity that makes each word meaningful and precious. It's a subtle game, yet despite my oftentimes short attention span, I never found myself wanting to drift to another distraction.

Not wanting to give much away, I'll say that the thing that stuck with me was the grey gloom of amorality. The style of the game reminded me of Cormac McCarthy's "The Road" or Joseph Conrad's "Heart of Darkness" The story is something that sneakily captures your imagination, and does more with what it doesn't say than most stories can with what they do.

This game that rode a wave of rave reviews to the top of the App Store, was originally programmed by a long programmer, Michael Townsend. It was later adapted for iOS by Amirali Rajan. While this game came out in late 2013 for iOS, it originally came out earlier the same year as a free browser run game that can be found at adarkroom.doublespeakgames.com. The game was a steal at \$0.99, but for a limited time is being offered for free in the Apple App Store.

RATING



MORE INFO

COST
Free

DEVELOPER
Amirali Rajan

FEATURES

SIDEBAR

THE BITE



BIANCA BYSTROM PINO / KA LEO O HAWAI'I ▲

UAHI ISLAND GRILL

BRAD DELL
FEATURES EDITOR

The Uahi Island Grill began frequenting the street in front of Kennedy Theatre. The food truck serves local food with a twist, adding kale, curries, tofu and more to their dishes.

The menu has a wide variety with sandwiches like the Sriracha Glazed Beef Burger (\$7.85), plate lunches like the Red Curry Fish (\$7.85) and salads like the Ahi Salad (\$12.50). Each plate lunch is served with white or brown rice and kim chee, macaroni salad or green papaya salad as a side. The truck also serves Thai Coffee (\$3) and Liliko'i Tea (\$3).

I ordered the Kālua Pork and Kale (\$9) with white rice and kim chee with a Liliko'i Tea. The pork was delicious. While the bright green color of the kale threw off the dish's aesthetics, it was a nice touch and the juicy pork was one of the best kālua pigs I've tasted. The kim chee added a tasty crunch, but if you're looking for kim chee with a kick, look elsewhere as the spiciness was muted.

The ice-cold Liliko'i Tea was perfect for the sweltering days. I also appreciated that the flavor wasn't weak, tasting more like juice while still having the lightness of tea.

Thanks to Uahi Island Grill's innovative take on local cuisine, I will be finding myself in front of Kennedy Theatre much more often.

RATING



MORE INFO

UAHI ISLAND GRILL

LOCATION
EAST-WEST ROAD,
BY KENNEDY THEATRE

HOURS
MON-FRI: 10 A.M. - 2 P.M.

WEBSITE
UAHIISLANDGRILL.COM

VERONICA FREEMAN
STAFF WRITER

The holiday season seems to sneak up faster every year, often causing chaos in the lives of college students who are broke and busy with work and school. Be prepared to tackle the holidays with a few tips and tricks to save you the stress.

PLAN IT OUT

Whether it's opening the calendar app on your phone for the first time ever or pulling out a million Post-It notes, write down what you need to get done, and when. Being organized is the key to avoiding stress during a hurried holiday season. From every paper you have due to every gift that needs to be bought, write it all down and keep track of what needs your immediate attention. The phrase "don't let the holidays sneak up on you" will never apply to you if you keep your eyes and mind on it.

GIFT SHOP AHEAD OF TIME

Figure out who needs gifts and where to get them. Does your next-door neighbor really need a personal gift? If you're not that close, don't sweat it. List your immediate family, your significant other, then extended family and friends should follow. Buying gifts for coworkers and professors comes last and only if you feel it's necessary. Don't wait until December to get started either. Black Friday and Cyber Monday allow you to score some awesome deals. Be sure to also call

ahead - sometimes stores sell out or need to direct you to a different location.

KNOW YOUR BUDGET

As a college student, this is crucial to making it through the holiday season in one piece. Plan out how much you intend to spend on each person on your gift-giving list and stick to it. Sometimes it's best to buy candy for those you're not as close with, or give a beautiful, handwritten card. Not everything needs to be expensive to be thoughtful. For family members, it's

often a good idea to pair up with a sibling or a parent to give a gift to someone if it's more expensive. That new grill Dad wanted that's just so expensive? Now would be a good time to contribute to a gift he'll "love" instead of buying him a gift he'll only "like."

EXERCISE

This is important. Eating is such a major part of the holidays. Not only do you want to stay in shape, but exercising will keep you in a good mood as well. Try going for a walk with your mom or taking your vis-

iting cousin on an amazing hike nearby. When you involve socializing, it kills two birds with one stone.

WHEN YOU GET A MOMENT, DO YOUR HOMEWORK

It may seem like you just want to flop down after a long day, but if it's before your typical bedtime and you're finished for the day, use that time to get some homework out of the way. Trust me, it'll feel a lot better than cramming at the last minute.

ILLUSTRATION BY MARIAN CHANG / KA LEO O HAWAI'I ▲



NOVEMBER CAMPUS EVENTS

DANIELLA REYES
SENIOR STAFF WRITER

NOV. 10 TO NOV. 16



2014 VETERAN'S DAY CELEBRATION
MĀNOA CAMPUS, WEBSTER HALL
FRONT LAWN
10:30 A.M. - 12 P.M.
FREE
CONTACT:
RSVP TO VALERIE SONG AT
VSONG@HAWAII.EDU

UH Mānoa Nursing is celebrating the veterans with an opening ceremony held on the lawn in front of Webster Hall, then with a gathering inside Webster Hall in Room 105. Join in the festivities and learn about new programs that are designed to help veterans returning to college. Light refreshments will be served during the ceremonies.



GIFTS FROM THE SEA
2777 KALĀKAUA AVE.
9:30 A.M. - 11 A.M.
\$25 PER PERSON
CONTACT:
RESERVATIONS@WAQUARIUM.ORG

Learn how to turn ocean treasures into beautiful jewelry that can be given as gifts, or worn as a trendy art piece. "Up-cycled" jewelry is made from remnants found washed up on the beach. The Ocean Aware Jewelry Workshop, with artist Kathleen King of Kuloko Arts of Hawai'i, will teach you how to create gorgeous pendants, providing all materials, supplies, chains and lauhala gift boxes. For ages 13 and up.



MĀNOA INTERNATIONAL EXCHANGE (MIX) FAIR
SINCLAIR LIBRARY, HERITAGE READING ROOM
11 A.M. - 2 P.M.
FREE

Interested in studying abroad? Come to the MIX Fair where you'll learn about study opportunities in over 25 countries. There are over 70 international universities that MIX does exchange programs with. You could study overseas for a summer, semester or even a full year, earning transfer credits toward your degree while paying your regular UH Mānoa tuition.

FLASH!

SUDDENLY, WE NEED TO HIRE PHOTOGRAPHERS!

GET A BIRD'S EYE VIEW THROUGH THE LENS AND SOAR LIKE THE FALCON!

KALEO
KALEO.ORG/JOBS
HEMENWAY 107

KA LEO IS NOW HIRING WRITERS

KA LEO, ASSEMBLE!

KALEO.ORG/JOBS
HEMENWAY HALL 107

KALEO

ALOHA NIGHTS HAPPY HOUR

Hard Rock CAFE

- \$4** Budweiser / Budlight on draft, Kona Longboard/ Kona Fire Rock/Kona Seasonal on draft.
- \$5** Heineken on draft
- \$6** Premium well drinks and more....

EVERYDAY 3PM - 7 PM
&
9PM - CLOSE
VISIT OUR WEBSITE:
HARDROCK.COM

Down to Earth
Organic & Natural

Love Life!
Eat Healthy, Be Happy!

— FIRST PLACE —
HAWAII'S BEST 2014
Awarded by the Star Advertiser

Local • Fresh Organic • Natural

\$3.00 off Any Deli Menu Item!

To see our complete menu visit our website. Valid at any Down to Earth location with this coupon. Not valid for team members of Down to Earth and their spouses. Not valid with other coupons or discounts. Exp. 11/30/14

www.downtoearth.org

HONOLULU - 2525 S. King St. • (808) 947-7678

KAILUA (808) 262-3838 **PEARLRIDGE (808) 488-1375** **KAPOLEI (808) 675-2300** **KAHULUI (808) 877-2661**

Includes social media icons for Twitter and Facebook, and a QR code.

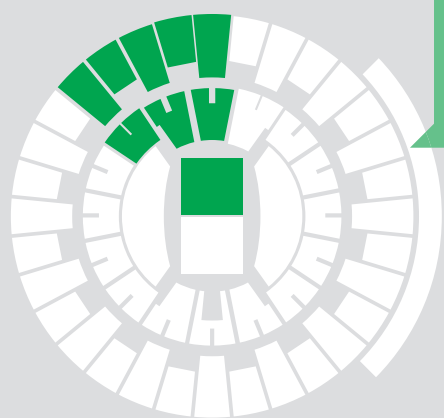
SPORTS

Nick Huth
Sports Editor

David McCracken
Associate Sports Editor

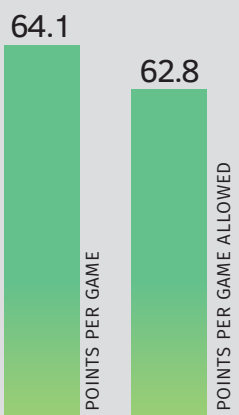
SIDE-BY-SIDE

WAHINE BASKETBALL STATS FROM LAST SEASON

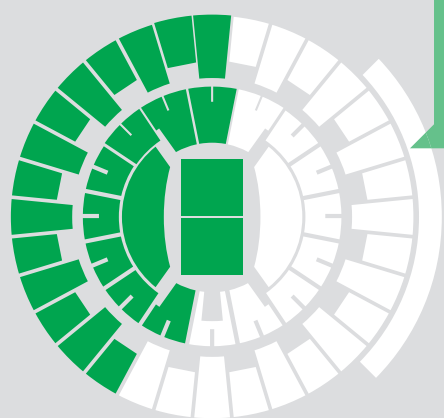


1,675
AVERAGE ATTENDANCE IN 14 HOME GAMES IN 2013

OVERALL	17-14
BIG WEST CONFERENCE	10-6
NON-CONFERENCE	7-8

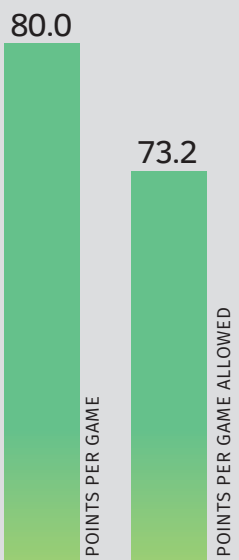


WARRIOR BASKETBALL STATS FROM LAST SEASON



6,417
AVERAGE ATTENDANCE IN 19 HOME GAMES IN 2013

OVERALL	20-11
BIG WEST CONFERENCE	9-7
NON-CONFERENCE	11-4



THE WAHINE



BRIANNA KENNEDY
#00
new

POSITION: Center
HEIGHT: 6'3
CLASS: Junior (Transfer)
MAJOR: Psychology/Political Science
HOMETOWN: La Verne, California
LAST SEASON: 11 points and 2.0 rebounds per game at Loyola Marymount



MARISSA WIMBLEY
#03

POSITION: Guard
HEIGHT: 5'6
CLASS: Junior
MAJOR: Family Resources
HOMETOWN: Elk Grove, California
LAST SEASON: 12 points and 0.6 rebounds per game at UH



BRIANA HARRIS
#04

POSITION: Guard
HEIGHT: 5'6
CLASS: Sophomore
MAJOR: Kinesiology and Rehabilitation Sciences
HOMETOWN: Inglewood, California
LAST SEASON: 12 points and 0.6 rebounds per game at UH



BREANA JONES
#12
new

POSITION: Forward
HEIGHT: 5'10
CLASS: Freshman
MAJOR: Biology
HOMETOWN: Westport, New Zealand
LAST SEASON: 21 points and 4 rebounds per game as a high school senior



JASMINE REDMON
#15
new

POSITION: Guard
HEIGHT: 5'9
CLASS: Freshman
MAJOR: Civil Engineering
HOMETOWN: Sacramento, California
LAST SEASON: 17.2 points, 6 assists and 4.3 steals per game as a high school senior



JUSTICE TOAILOA
#20
new

POSITION: Forward
HEIGHT: 5'9
CLASS: Freshman
MAJOR: Political Science
HOMETOWN: Hayward, California
LAST SEASON: 10 rebounds and 3 assists per game as a high school senior



ASHLEIGH KARAITIANA
#22

POSITION: Guard
HEIGHT: 6'0
CLASS: Senior
MAJOR: Travel Industry Management
HOMETOWN: Hamilton, New Zealand
LAST SEASON: 10.4 points and 5.2 rebounds per game at UH



RAJA MORENO-ROSS
#23

POSITION: Forward
HEIGHT: 5'11
CLASS: Junior
MAJOR: Family Resources
HOMETOWN: Tucson, Arizona
LAST SEASON: 13.2 points and 9.2 rebounds per game at UH



DALAYNA SAMPTON
#24

POSITION: Forward
HEIGHT: 6'1
CLASS: Freshman
MAJOR: Kinesiology
HOMETOWN: Vallejo, California
LAST SEASON: 16.6 points and 14.6 rebounds per game as a senior in high school



SHAWLINA SEGOVIA
#32
new

POSITION: Forward
HEIGHT: 6'1
CLASS: Senior
MAJOR: Sociology
HOMETOWN: Riverside, California
LAST SEASON: 10.3 points and 7.9 rebounds per game at Mount San Antonio College



CONNIE MORRIS
#33
new

POSITION: Center
HEIGHT: 6'4
CLASS: Junior
MAJOR: Sociology
HOMETOWN: Mesquite, Nevada
LAST SEASON: 12.3 points, 7.4 rebounds and 2.0 blocks per game at Salt Lake City Community College



DESTINY KING
#34
new

POSITION: Center
HEIGHT: 5'10
CLASS: Junior
MAJOR: Family Resources
HOMETOWN: Long Beach, California
LAST SEASON: 8.6 points, 6.0 rebounds per game at UH

THE WARRIORS



SARAH TOEAINA

#05
new

POSITION: Guard
HEIGHT: 5'11
CLASS: Freshman
MAJOR: Business Marketing and Accounting
HOMETOWN: Covington, Washington
LAST SEASON: 20.1 points, 9.5 rebounds and 3.4 steals per game as a high school senior



ISAAC FLEMING

#00
new

POSITION: Guard
HEIGHT: 6'3
CLASS: Freshman
MAJOR: Undecided
HOMETOWN: Wilmington, Delaware
LAST SEASON: Averaged 21 points, 6 rebounds and 7 assists per game last season at Massanutten Military Academy



GARRETT NEVELS

#01

POSITION: Guard
HEIGHT: 6'2
CLASS: Senior (Transfer)
MAJOR: Sociology
HOMETOWN: Los Angeles, California
LAST SEASON: Averaged 13.1 points and 3.1 rebounds per game for UH



NIKO FILIPOVICH

#02

POSITION: Guard
HEIGHT: 6'0
CLASS: Redshirt Freshman
MAJOR: Business
HOMETOWN: Torrance, California
LAST SEASON: Averaged 11 points and 5 rebounds per game in high school



BRANDON JAWATO

#03

POSITION: Guard
HEIGHT: 6'4
CLASS: Redshirt Junior
MAJOR: Communication
HOMETOWN: El Segundo, California
LAST SEASON: Averaged 5.9 points and 1.0 rebounds per game at UH



SHAWNA-LEI KUEHU

#21

POSITION: Guard
HEIGHT: 5'10
CLASS: Senior
MAJOR: Economics
HOMETOWN: Aiea, O'ahu
LAST SEASON: 10.1 points and 4.2 rebounds per game last season at UH



RODERICK BOBBITT

#05
new

POSITION: Guard
HEIGHT: 6'3
CLASS: Junior (Transfer)
MAJOR: Undecided
HOMETOWN: Oakland, California
LAST SEASON: Averaged 15.9 points, 5.5 rebounds and 5.3 assists per game at Indian Hills Community College



DYRBE ENOS

#10

POSITION: Guard
HEIGHT: 5'10
CLASS: Redshirt Sophomore (Walk-On)
MAJOR: Secondary Education
HOMETOWN: Aiea, Hawai'i
LAST SEASON: Averaged 1.5 points per game at UH



QUINCY SMITH

#11

POSITION: Guard
HEIGHT: 6'1
CLASS: Junior (Transfer)
MAJOR: Computer Science
HOMETOWN: Antioch, California
LAST SEASON: Averaged 4.9 points and 2.7 assists per game at UH



NEGUS WEBSTER-CHAN

#14

POSITION: Guard
HEIGHT: 6'7
CLASS: Sophomore (Transfer)
MAJOR: Undecided
HOMETOWN: Scarborough, Ontario, Canada
LAST SEASON: Sat out due to NCAA transfer rules



MORGAN MASON

#25

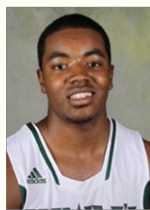
POSITION: Guard
HEIGHT: 5'9
CLASS: Senior
MAJOR: Family Resources
HOMETOWN: Los Angeles, California
LAST SEASON: 6.2 points, 3.8 rebounds per game at UH



STEFAN JOVANOVIC

#15

POSITION: Center
HEIGHT: 6'11
CLASS: Sophomore
MAJOR: Business
HOMETOWN: Kraljevo, Serbia
LAST SEASON: Averaged 1.8 points and 1.3 rebounds per game at UH



BROCKE STEPTEAU

#21
new

POSITION: Guard
HEIGHT: 5'9
CLASS: Freshman (Walk-On)
MAJOR: Undecided
HOMETOWN: Dallas, Texas
LAST SEASON: Averaged 16 points, 2 rebounds and 5 assists per game as a senior in high school



AARON VALDES

#23

POSITION: Guard
HEIGHT: 6'5
CLASS: Redshirt Sophomore
MAJOR: Kinesiology
HOMETOWN: Whittier, California
LAST SEASON: Averaged 3.2 points and 2.0 rebounds per game at UH



ZACH BUSCHER

#24
new

POSITION: Center
HEIGHT: 6'3
CLASS: Freshman (Walk-On)
MAJOR: Undecided
HOMETOWN: Kailua, Hawai'i
LAST SEASON: Averaged 11.4 points per game as a senior at 'Iolani High School



ANGELINA SMITH

#42

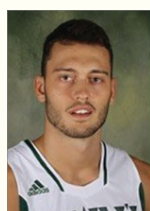
POSITION: Center
HEIGHT: 6'1
CLASS: Redshirt Freshman
MAJOR: Undecided
HOMETOWN: Colorado Springs, Colorado
LAST SEASON: 12.5 points, 6.8 rebounds and 1.8 blocks per game as a senior in high school



MIKE THOMAS

#25

POSITION: Forward
HEIGHT: 6'7
CLASS: Sophomore
MAJOR: Accounting
HOMETOWN: Woodland Hills, California
LAST SEASON: Averaged 1.2 points and 1.2 rebounds per game at UH



STEFAN JANKOVIC

#33
new

POSITION: Forward
HEIGHT: 6'11
CLASS: Sophomore (Transfer)
MAJOR: Political Science
HOMETOWN: Mississauga, Ontario, Canada
LAST SEASON: Sat out due to NCAA transfer rules



SPORTS

sports@kaleo.org
@kaleosportsNick Huth
Sports EditorDavid McCracken
Associate Sports Editor

Center of attention

Meet the transfer hoping to replace a legendary Wahine



MARK LOHDE / KA LEO O HAWAI'I ▲

Connie Morris played at both Utah and Salt Lake Community College before joining the Rainbow Wahine.

JEREMY NITTA
ASSOCIATE WEB EDITOR

At the end of last season, Rainbow Wahine basketball head coach Laura Beeman promised that there would be more size on the upcoming edition of the team. Beeman has delivered on that promise, with one player in particular who stands head-and-shoulders above her peers.

"We want her on the blocks, and getting her the ball inside. Teams are either going to have to double her, or they're going to have to play her one-on-one. She is going to open up our offense, and free up players like Shawna [Kuehu] and Destiny [King] and Ashleigh [Karaitiana] to hit shots, or for them to slash to the basket. She is going to make other teams guard her, and that's a great thing," head coach Laura Beeman said.

Junior center Connie Morris towers over most of her teammates played well in exhibition games so far this season.

REPLACING A LEGEND

Last season marked the end of the illustrious career of power forward Kamilah Jackson. For four

seasons, Jackson supplied the 'Bows with a steady stream of interior scoring and rebounding and departed the University of Hawai'i as the fourth all-time leading scorer and second all-time leader in career rebounds. Jackson averaged 14.1 points and 9.4 rebounds

"I really have grown up with basketball. I've been around it my whole life."

— CONNIE MORRIS

per game during her tenure at UH and was the second player ever to join the 1,000-point rebound club for the Rainbow Wahine.

Coming into this season, the team knew it would have to find a new dominant force to anchor them from the post, and seems to have found one in Morris.

"It's gonna be a big difference," Beeman said. "Connie is a legit 6-foot-4. Connie doesn't have the same guard skills that Mia [Jackson] had yet, though she can develop them."

Additionally, Beeman believes that Morris can continue to bring her game to new heights.

"I think what makes it most encouraging is that I don't think Connie is close to her potential," Beeman said. "I think she still plays a little passive, and is kinda waiting and seeing. She sometimes looks at it as Shawna and Ashleigh and Destiny's team. We

need to get her more aggressive. But I don't look at that as a negative. I think it's great how much talent and upside she has."

Still, that type of pressure placed on her by her coach is exactly the reason why Morris chose Hawai'i.

"She wants us working hard," Morris said. "It's not just on the guards to get the ball to us post players. She works us to make sure we work for good position. The other schools I looked at didn't have that kinda emphasis on getting it to the post players. It was more of get the ball to them once in a while. Only Coach [Beeman] really showed that emphasis."

In fact, Morris had an interesting tale on what truly sold her on Hawai'i.

"I came to a game against Fullerton, and they actually got their butts kicked," Morris said. "But watching her coach, she knew that her team was going to learn from that experience. She wasn't just screaming at her players. She told them what they did wrong and what they needed to work on. But also, watching them, you could tell that team had a lot of chemistry. Even when they were down, they kept fighting. I knew she would make her players better."

GROWING UP IN THE GAME

Growing up, there was always competition going on between Morris and her family.

Morris' mother, Bernice, played basketball and volleyball at Utah Valley State College. Morris' older brother, Anthony, had a delayed start to college due to a mission trip and is currently a sophomore on the Dixie State basketball team.

"Me and my brother would go at each other all the time," Morris said. "It got to a point where we were like, 'Do we even like each other anymore?' He came back from his mission, and he wanted to

get back into sports. So we would play and he was old and fat, so I finally got to kick his butt. It felt great. But yeah, we are always very competitive. Even in something like mini-golf, we'll still be trying to beat each other."

Morris is also one of those players who have been immersed in the game of basketball for her entire life. In addition to her family members playing, her grandfather coached her and introduced her to the game at a very young age.

"I was raised by a single mom and my grandfather was a basketball coach," Morris said. "So when I was a kid, even before I was in like, elementary school, I was going down to those practices with my grandpa and seeing what basketball was. Those guys were like giants to me, even though we're kinda the same size now. So I really have grown up with basketball. I've been around it my whole life."

LOOKING AHEAD

There is no doubt a challenging road lies ahead of the Rainbow Wahine and Morris. But Morris is looking forward to being, for all intents and purposes, at the center of it.

"Going from high school into my freshman season was a huge jump," Morris said. "Like, it was a mind-blowing kind of experience. But getting that experience and then getting some development at junior college was good for me because now I can come in and understand what it is that we're running here and what I have to do."

Morris realizes the expectations on her shoulders to step in and replace Jackson on the court, and firmly believes that the task can be done, although it may require a team effort to do so.

"I don't know if alone I can replace her," Morris said. "I'm going to be me and bring what I can do to this team. I feel I have a good basketball IQ, and I guess I could replace her. But I know it's not going to be just me. We have Dalayna Sampson, who is a beast on the boards. So as a whole, I definitely think we can come in and take that spot, and be that beast for the team."

BEEMAN'S VOTE OF CONFIDENCE

"I think she'll make a difference," Beeman said. "Obviously, we have to make sure she stays out of foul trouble, but we will tell her to always be aggressive. We will face teams that have post players who are 6-3 or 6-4, and we're going to have to double-team because they're skilled. But she gives us that immediate size. We know that she can go one-on-one with these people and that she won't be dominated because of the size. It makes our defensive schemes a little easier, because she is that deterrent."



COMING SOON...
-UH Production short
-KTUH Mini-Documentary

Follow us!
Subscribe to our Channel
UHPRODUCTIONS
Follow us @uhpro
LIKE US
facebook.com/uhproductions

Subscribe to our newsletter @

<http://eepurl.com/40M8X>

Meet the Crew

Matt Matches
Extras Associate Producer
Year: Junior
Major: ACM
Favorite Film Maker:
Paul Thomas Anderson
Why UHP?:
I joined UHP because I was able to make friends with similar interests.



"Sweet delights for any occasion." **CAKE WORKS** *Pumpkin Crunch Cake*

10% Off for pre-orders for Thanksgiving
PRE-ORDER NOW
Offer ends Nov. 23rd, 2014

MON-SAT: 9:00 AM-7:00 PM
SUN: 9:00 AM-6:00 PM
CAKEWORKSHI.COM
(808) - 946 - 4333

2820 S. King Street
Honolulu, HI 96826
Across from Humane Society

39 YOSHOKU BAR

NOVEMBER SPECIALS WITH UH ID
\$1 SHOTS WHEN YOU SING AT KARAOKE ON SUNDAYS AT 8PM
\$4.00 SAKE BOMBS
\$3.99 PUPUS ALL NIGHT

3008 WAIALAE AVE. HONOLULU, HI 96816
4:30 PM TO MIDNIGHT
808.735.3939

WWW.YOSHOKUHAWAII.COM @39YOSHOKU

GYROS, A COLLEGE STUDENT'S BEST FRIEND
FREE \$2.00 DRINK W/PURCHASE OF MEAL

NOW HIRING!!!

3040 Waialae Avenue | Honolulu, Hawaii 96816
(808) - 734 - 0404

UH ID Accepted Here

The Fat Greek

JOIN THE MANOA MANIACS

AND GET REWARDED!

GO TO UHMANIACREWARDS.COM FOR MORE INFORMATION AND TO SIGN UP

MOILIILI HONGWANJI MISSION • JODO SHINSHU BUDDHIST TEMPLE

DE-STRESS TUESDAYS

Discover meditation in the Jodo Shinshu tradition.
Tuesdays at 6:30 p.m.

Mō'ili'ili Hongwanji Buddhist Temple
902 University Avenue, Honolulu, Hawaii
(808) 949-1659
mhm@moililihongwanji.org

HONOLULU FRIENDS MEETING (QUAKER)

MY SPIDEY SENSES ARE TINGLING! SOMEONE IS READING AN ISSUE OF KA LEO!

COURTNEY CONTRADES
Junior, Travel Industry Management

LINDSEY MCKELVIE
Junior, Travel Industry Management

What now?
KALEO

SPORTS

sports@kaleo.org
@kaleosports

Nick Huth
Sports Editor

David McCracken
Associate Sports Editor



JONATHAN BASILIO / KA LEO O HAWAI'I

The Wahine were predicted by coaches to finish second in the Big West.

Focused on the road ahead

JEREMY NITTA
ASSOCIATE WEB EDITOR

The sports headlines have recently been dominated by former University of Hawai'i men's head basketball coach Gib Arnold and the departure of all-conference forward Isaac Fotu. With no clear answers in sight, the controversy promises to drag into the upcoming season.

While these problems put a damper on what had promised to be a solid year for the Rainbow Warriors, these problems are also casting a shadow over the other basketball team that resides in the Stan Sheriff Center, the Rainbow Wahine.

"I think the situation is unfortunate for the men's basketball team," senior forward Ashleigh Karaitiana said. "But at the same time, we're just worried about our program."

Wahine head coach Laura Beeman, who is emphasizing that her team will not be affected by

the chaos swirling around them, echoed this feeling.

"We have our own little bubble and we play inside that bubble," Beeman said. "There will be no distractions, whatsoever. We love

support them, and keep them here at this beautiful institution. But let's go make sure that we do what we need to do, and concentrate on women's basketball."

The team is looking at the War-

"We see this as a chance to become the basketball team that represents the state of Hawai'i."

—ASHLEIGH KARAITIANA
SENIOR FORWARD

those boys, but it is all about Rainbow Wahine basketball."

Beeman said that while she hopes for the best for the men, the focus must stay dialed in with her team.

"The only thing I said to my players was love up those boys," Beeman said. "Those players didn't ask for any of this, so give those boys some love, and let's make sure we

comers, the Rainbow Wahine are showing signs that they could be in for one of the best seasons the program has had in recent memory.

"We see this as a chance to become the basketball team that represents the state of Hawai'i," Karaitiana said. "We want to be the team that rises to the occasion, and has the best record at the end of the year."

The chance of the Wahine upending the Warriors appears to be good for the women's team. The Rainbow Wahine had nearly as good a season as the Warriors did last season, perhaps even better considering that the Wahine played a much stronger preseason schedule. This season, the Wahine are poised to do even better than the Warriors, picked to finish second in the Big West compared to fifth for the Warriors.

"We know where we want to be and what we want to do," Karaitiana said. "Obviously, we didn't get what we wanted in the preseason poll, because we were picked second and not first, but we want to be first, and we know we're gonna work hard everyday and work towards our goal of winning the Big West."

Hawai'i also returns seven letter-winners from last season's squad, headlined by preseason first team selection Shawna-Lei Kuehu, as well as Karaitiana, who took home the Big West Sixth Woman of the Year award last season. The Rainbow Wahine will also be working to infuse as many as seven newcomers into their rotation. Still, the team oozes potential, and the team promises that they will be better than they were last year.

"We have a lot of new people, a lot of newcomers," Karaitiana said. "There's a lot of transfers, a lot of freshman. We have a lot of depth out there on the court. We have a deep bench and a lot of size this year. We know we won't be dependent on one person. Last year, it was all Mia Jackson. Now, we have a lot of people who can be scorers. If one person is being shut down, we have people who can get it done both inside and out."

In the team's two recent exhibition contests, the 'Bows received solid contributions from their newcomers. Junior transfer Connie Morris collected eight points and three rebounds in the team's intrasquad scrimmage, then notched nine points and two rebounds against Hawai'i Pacific. Freshman forward Dalayna Sampton also has showed promise, corraling 12 rebounds in the scrimmage, before collecting nine points and eight rebounds against HPU.

"There's still a lot of development to be done," Karaitiana said. "The newcomers have come in and worked really hard. And now it's on us as returnees to keep that level rising. We can't just sit at a plateau and play to where the newcomers are. We push hard and make them work harder, because that'll make us work harder as a team."

//////////////////// Ka Leo O Hawai'i



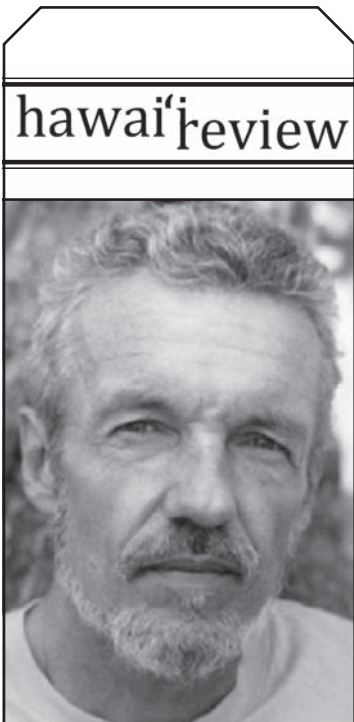
UPCOMING GAMES

LEGEND

AWAY

HOME

- 11/14 Colorado State
- 11/16 Denver
- 11/21 California
- 11/23 UNLV
- 11/28 Prairie View A&M
- 11/29 Stanford
- 11/30 North Carolina
- 12/6 Pacific
- 12/13 BYU Hawai'i
- 12/20 Loyola Marymount
- 12/23 CSU Bakerfield
- 12/31 Hawai'i Pacific
- 1/02 UNC Greensboro
- 1/08 Cal Poly
- 1/10 CSUN
- 1/17 Alumnae Game
- 1/17 UC Riverside
- 1/22 UC Davis
- 1/24 UC Irvine
- 1/29 Long Beach State
- 1/31 CSUN
- 2/05 UC Santa Barbara
- 2/07 Cal Poly
- 2/12 UC Riverside
- 2/14 Cal State Fullerton
- 2/19 UC Irvine
- 2/21 UC Davis
- 2/26 Long Beach State
- 3/05 UC Santa Barbara
- 3/07 Cal State Fullerton



IAN MACMILLAN
Writing Awards

WIN \$500

1st PLACE WINNERS IN
Fiction
Poetry
Creative Nonfiction (NEW!)

Submissions will be accepted from October 15 through December 15 at bit.ly/submit2HR

EMBRY-RIDDLE
Aeronautical University
WORLDWIDE

THINK BEYOND AVIATION.

WORLD-CLASS EDUCATION
IN ENGINEERING, LEADERSHIP, FIRE SCIENCE,
LOGISTICS, SAFETY, MANAGEMENT AND MORE.

Honolulu • Kaneohe • Schofield • Online
P: 808-254-2106 E: kaneohe@erau.edu

NOW HIRING!

Dennis W.S. Chang AAL, LLC

A busy attorney's office with staff of four full time employees has an opening for one part-time clerical position. Immediately Available. Part-time clerical position involving the following:

- 1 Preparation of attorney's files for conferences, trial, and special projects.
- 2 Filing.
- 3 Additional clerical duties as time allows. Willing to teach on the job.
- 4 Approximately 18 hours a week, flexible with school schedule and will be discussed.

Pay: \$10.00 per hour

(Office hours are M-Th 8:30 am -5:00 pm)
Please email your application/resume or call Lana Young at 521-4005 extension 0

AN IMPRESSIVE RESUME STARTS WITH PROFESSORS WHO ALREADY HAVE ONE.

HAWAI'I SCHOOL OF PROFESSIONAL PSYCHOLOGY
AT ARGOSY UNIVERSITY

PSYD AND MA DEGREES IN CLINICAL PSYCHOLOGY
CLINICAL.ARGOSY.EDU/IMPRESSIVE

See auprogams.info for program duration, tuition, fees, and other costs, median debt, federal salary data, alumni success, and other important info. Financial aid is available to those who qualify. Argosy University is accredited by the Senior College and University Commission of the Western Association of Schools and Colleges (985 Atlantic Ave., Suite 100, Alameda, CA 94501, www.wascsenior.org) The Doctor of Psychology in Clinical Psychology program at the Hawai'i School of Professional Psychology at Argosy University is accredited by the Commission on Accreditation of the American Psychological Association (APA). Questions related to the program's accredited status should be directed to the Commission on Accreditation: Office of Program Consultation and Accreditation, American Psychological Association, 750 1st Street, NE, Washington, DC 20002. Phone: (202) 336-5979 / E-mail: apaaccred@apa.org / Web: www.apa.org/ed/accreditation. Programs, credential levels, technology, and scheduling options are subject to change. Argosy University, Hawai'i, 1001 Bishop Street, Suite 400, Honolulu, HI 96813. ©2014 by Argosy University® Our email address is csprogramadmin@edmc.edu

Congratulations!!!
FOR FALL 2014
TO ALL RIOS WHO RECEIVED FUNDING

KEEP POSTED FOR MORE FUNDING OPPORTUNITIES COMING IN THE NEXT SEMESTER

THE ASUH FINANCE COMMITTEE IS IN CHARGE OF RECEIVING INVESTING AND MAKING RECOMMENDATIONS ON HOW TO APPROPRIATE ASUH FUNDS. WE INTEND FOR OUR INVESTMENTS TO ENHANCE THE UNDERGRADUATE EXPERIENCE.

ASUH
Associated Students of the University of Hawaii
YOUR STUDENT GOVERNMENT

THE VOICE KALEO SHOPPING GUIDE

There are 4 types of shoppers - Find out which one you are on
NOVEMBER 24, 2014

SPORTS

sports@kaleo.org
@kaleosportsNick Huth
Sports EditorDavid McCracken
Associate Sports Editor

Moving on

Warrior basketball begins life after Gib Arnold with exhibition win over HPU



[HEADSHOTS] SOURCE: UH ATHLETICS; REIS SHIMABUKURO / KA LEO O HAWAI'I ▲

Mike Thomas led the Warriors with 15 points against HPU. His previous career high was four points.

NICK HUTH
SPORTS EDITOR

With players injured and the program coming off a turbulent preseason, the Warrior basketball team enjoyed the opportunity to return to the court in its 62-55 exhibition victory over Hawai'i Pacific University.

"It was good to see everybody smile. It's been a rough last week and a half, but this win was big for us I think," sophomore forward Aaron Valdes said.

The win over the Division II opponent wasn't as comfortable as the team wanted, but interim head coach Benjy Taylor chose to let the team play freely for most of the game before intervening in the final moments with more structured play.

"In the first half I could have done that, but I thought it was important to let the guys play through some things," Taylor said. "You don't learn a lot from 20-point wins sometimes."

A NEW OFFENSE

In his first game as head coach since he led Chicago State to a 9-23 record in 2010, Taylor's Warriors shot 39 percent from the field as they tried to implement a new offensive system.

"We've been running this offense for three days. It's literally from scratch," Taylor said.

The new offense is partly due to Taylor's design, but also due to the loss of all-conference forward Isaac Fotu. Without a consistent post-presence, Hawai'i

found itself attempting to penetrate from the perimeter and find open jump shots without relying on the double teams that Fotu so often commanded last season in the restricted area. Taylor remarked that the offense naturally found shots before post-up opportunities were presented.

With the increased reliance on perimeter production, the Warriors

"We've been running this offense for three days. It's literally from scratch."

— BENJY TAYLOR
INTERIM HEAD COACH

committed 18 turnovers against the Sharks with just 11 assists. A positive assist-to-turnover ratio is often a measuring stick for an efficient offense, but Taylor believes that ratio will change.

"We'll flip that, and have 18 assists and 11 turnovers. We have the guard play to do that," said Taylor.

ADJUSTED ROLES

Another side effect of the new-look team is the inexperienced starting lineup. Senior guard Garrett Nevels is the only starter returning from last season's 20-win team. Although Nevels finished with 14 points, his 4-of-15 shooting performance meant that someone new had to lead the undermanned lineup.

In his first career start, Mike Thomas filled in at Fotu's previous position at power forward to lead the team with 15 points on 7-of-10

shooting from the field. The 6-foot-7 sophomore also picked up eight rebounds in 29 minutes played, but was forced to the bench in the second half with foul trouble.

"I thought he was great tonight," Taylor said. "I let him get a little too tired a couple of times and that's my fault. I have to learn how to rotate a little quicker and keep everyone a little fresher."

Thomas, who averaged just 5.6 minutes per game last season, remarked on his need to conserve himself defensively in order to stay on the court. But the sophomore also appreciated the increased playing time and role within the team.

"I love it. It's what you ask for every night when you go to bed," Thomas said. "All the hard work you put in, it's paying off, so I'm ready to go this year."

CENTRAL DEFENDER

As the only true center on the Hawai'i roster, Stefan Jovanovic played 27 minutes while picking up seven rebounds and four blocks. Although he only scored two points, the team was pleased with how the 6-foot-11 Serbian played in his first significant playing time of his UH career.

"He really hasn't played in two

years, and he's going to get better every game because his heart is in the right place," Taylor said after the game.

As the team waits for Stefan Jankovic to become eligible after transferring from Missouri, the Warriors will rely on him to play beyond his role, as the thin frontcourt tries to survive the non-conference schedule to start the season. Thomas claims that the rest of the team is trying to support him in adjusting to his new role.

"Just empowering him, giving him confidence. Because it's tough when he's the only true big out there with us," Thomas said. "He's doing a great job. He's picking it up faster than I thought."

The team agrees that his ability to stay on the court and have an impact will be a determining factor in the team's success. The perimeter defense needs to limit opposing guards from getting into the paint according to Valdes, as Jovanovic picked up four fouls against HPU.

"[We are] trying to protect him on defense too because he's our only big. We need him in there, he's going to be big for us this year if we're going to make a run," Valdes said.

NEXT GAME

ARKANSAS-PINE BLUFF

WHEN

Friday, Nov. 14
7:30 P.M.

WHERE

Stan Sheriff Center

PLAYER GRADES

BLAKE TOLentino
WEB SPECIALIST

C+

Isaac Fleming

2-9 FGA
10 points
3 rebounds
2 assists
3 steals
30 minutes played

Fleming played aggressive defense and was able to create a pair of steals while denying penetration to whom-ever he faced. Offensively, he was able to get to the rim often, but was out of control on some drives and had a poor shooting night. He also took a technical foul that sullied his efforts.

C+

Garrett Nevels

4-15 FGA
14 points
2 rebounds
3 assists
2 steals
36 minutes played

Nevels had a solid defensive day, but a poor shooting night. He was able to score on a number of drives, but couldn't hit from deep consistently as he attempted to force the issue.

C-

Aaron Valdes

4-11 FGA
13 points
10 rebounds
2 assists
3 steals
33 minutes played

A handful of defensive lapses in the zone, as well as a pair of blown dunks marred an otherwise positive effort highlighted by an excellent job in attacking the glass.

B+

Michael Thomas

7-10 FGA
15 points
8 rebounds
1 block
1 steal
29 minutes played

Thomas was the Rainbow Warriors' most consistent offense of the night, slashing to the rim and hitting mid-range jumpers all night and chipping on the boards.

C-

Stefan Jovanovic

1-1 FGA
2 points
7 rebounds
4 blocks
2 steals
27 minutes played

Offensively, he was a non-factor, mishandling entry passes and hesitating his way into two travels. Defensively, he showed flashes of a future rim protector, contesting shots and ending with four blocks.

KA LEO IS NOW HIRING

WRITERS

KA LEO, ASSEMBLE!

FREE SPEECH WALL 2014

FREE SPEECH FORUM TODAY 4 P.M. CHAMBER CENTER EXECUTIVE DINING ROOM

KALEO
THE VOICE

KALEO.ORG/JOBS
HEMENWAY HALL 107

Get your info in a Flash!

- Read stories
- Nightlife
- Campus Hours
- Use our campus map
- Classifieds
- Awesome deals
- Need a job?
- Games
- Hawaii Review
- Listen to the radio
- What's up?
- Surf Forecast
- Catch the bus on time
- Watch videos

Search "kaleohawaii" in your App Store

SIGN UP FOR OUR NEWSLETTER

- Read stories you can only find online
- Get breaking news right to your email
- Be the first to know about exclusive promos

GO TO
www.kaleo.org/subscribe
TO SIGN UP

Discover the Benefits of Peace Corps Service

Panel Discussion
University of Hawaii - Manoa
Monday, November 17
5 to 6:30 p.m.
QLC, Room 208

A panel of Returned Peace Corps Volunteers will discuss how you can make a difference overseas and return home with the experience and global perspective to stand out in a competitive job market.

Life is calling. How far will you go?

855.855.1961 | www.peacecorps.gov

TWITTER: FOLLOW @KALEOHWAI
GET DAILY UPDATES ON EVERYTHING UH MANOA!

PHOTOS: @KALEOPHOTOS
THOUGHTS: @KALEOPIINIONS
CULTURE: @KALEOFEATURES
UH SPORTS: @KALEOSPORTS

FACEBOOK: LIKE KA LEO
KEEP UP WITH TOP NEWS, FEATURES, SPORTS, OPINIONS AND PHOTOS OF THE DAY!!

FACEBOOK.COM/KALEOHWAI

INSTAGRAM: FOLLOW @KALEOHWAI
SCROLL THROUGH OUR FEED FOR PROMOS, PRIZES AND GIVEAWAYS AS WELL AS PHOTO EXCLUSIVES!!!

'It doesn't change what we do'

AKA, Maniacs optimistic despite hoops turmoil



DENNIS CASTILLO / KA LEO O HAWAII

The Mānoa Maniacs helped break an exhibition attendance record when over 500 students attended last weeks game against HPU.

NICK HUTH AND PAIGE TAKEYA
SPORTS EDITOR AND
SENIOR STAFF WRITER

Ask anyone involved, and they'll all tell you the same thing: This year was supposed to be a golden year for University of Hawai'i men's basketball.

"I've had Top 25 teams, and I felt this was the best team I've ever had the opportunity and pleasure to coach," said former head coach Gib Arnold in a press conference.

That isn't just sentiment talking: Rainbow Warrior basketball season ticket sales were trending up, while Mānoa Maniacs were planning for the biggest, loudest student crowds ever to grace Stan Sheriff Center.

Despite the Oct. 28 firing of Arnold and assistant coach Brandyn Akana and the departure of junior forward Isaac Fotu and freshman transfer Sammis Reyes from the program, both fundraiser club 'Ahahui Koa Ānuenue (AKA) and student-driven Mānoa Maniacs are hopeful that things will stay bright for the team and its fans.

BIG-BUDGET BUYERS

Ticket sales at UH work in three different ways: single-game tickets, season tickets and season ticket packages. AKA president Jon Kobayashi said that men's basketball season ticket sales have been steadily increasing in recent years, but it's the elite package sales that are booming this season.

"This year, our number of Hoops packages we have sold to date is at an all-time high," Kobayashi said. "Every day, we sell another package. We're going into new territory."

It costs \$1,200 to buy the basic Hoops package for men's basketball, which includes two season tickets for lower-level or best available seats, plus a VIP parking pass. Kobayashi reckons that the previous high was last season's 95 packages.

"This is what we've been working towards and it is a shame the current situation we're in."

— JAMIE SMITH

FORMER PERFORMANCE ANALYST

This year, as of Oct. 30, AKA has sold 104 packages — netting \$124,800 for the department.

"The community support behind the program was at an all-time high, relative to AKA sales," Kobayashi said.

As of Nov. 5, regular season ticket sales stand at 3,174, with 337 single-game tickets sold.

Kobayashi acknowledged that the program shakeup is likely to have some kind of impact on ticket sales.

"It remains to be seen how it affects it. I want to say that new opportunities are coming to bear," Kobayashi said. "But it will [affect us], and we anticipate it, and we want to keep moving forward with what we're doing"

AKA met as an organization in the afternoon of Oct. 28 to discuss their plans moving forward in the wake of the announcement. Kobayashi said that the fundraising club was already preparing new programs and ways of engaging the community, to be announced at a later date, but he's hopeful that the fans will see that now is the time the players need their support more than ever.

"Change like this is always going to have an impact on interest and fundraising, and we expect that," he said. "But we're going to do our best to cater to and take care of people who want to support the program."

"The circumstances are out of our control. What's happened has happened. It doesn't change what we do."

MANIACS ROLL ON

Mānoa Maniacs was also looking to use men's basketball as the showcase of what a spirited student fanbase at the university could like.

"We're really using men's basketball as a platform this year to show what can be done when we have the

support, because we haven't had that before. The idea is that it can then be applied to the other sports too," former performance analyst Jamie Smith said.

Smith, a British citizen, confirmed to Ka Leo that he is expected to resume his job as performance analyst and also assume the role of director of basketball operations once his work visa clears.

The goal is to keep the student section packed every game. To that end, Mānoa Maniacs has allocated \$20,000 of its budget strictly for men's basketball-related activities.

The basketball program is picking up what has been seen as a football tradition: tailgating. Two hours before every home game this season, the team will host a tailgate with giveaways, sign- and face-painting stations and free food.

Mānoa Maniacs and Smith have looked at every aspect of the men's basketball experience, with engagement as their primary goal. Theme nights have been expanded upon, since the events helped double student attendance back in 2012. This year, fans will get the opportunity to compete for big-ticket prizes such as GoPros, iPads and university-branded headphones during media timeouts at games.

The team's first game against Hawai'i Pacific University last Thursday had 700 green shirts to hand out to students, and this weekend's matchup against CSU Bakersfield will be stocked with 700

green lightsabers.

"This is what we've been working towards and it is a shame the current situation we're in," Smith said.

Interim head coach Benjy Taylor has gotten in on the action, attempting to pick up where Arnold left off, suggesting ideas to the Maniacs and participating in the same promotions as the players.

"He even painted his face with some green and black warrior paint and he has his tongue sticking out [in one of the team's promotional signs]," Smith said.

Smith acknowledged that his attachment to the program and the increase in both funding and participation since he started is a product of Arnold's persistence and vision during his tenure. But one feels the team and the excitement can extend beyond individual coaches and players.

"I wouldn't be here if it wasn't for his persistence in keeping me here. But we want to keep doing what Coach Arnold basically started," Smith said. "Coach Taylor told me he wanted to keep going with this."

"We saw [this year] as a team that has a chance to do a lot of big things, and there's going to be a lot of excitement around that team. Now I hope the students will come out and support our players in what's been a turbulent time."

BLAKE'S
TAKE

We should have seen it coming



FILE PHOTO / KA LEO O HAWAII ▲

With only one returning senior, the Warriors were poised to break out in 2014 before Gib Arnold's firing.

BLAKE TOLENTINO
WEB SPECIALIST

In May of 2014, Gib Arnold was negotiating a new contract that would lock him in as the head coach of the Rainbow Warrior basketball team for three more years.

Within four months, he was out of a job.

That offer of extension sat in limbo for months as the continued NCAA investigation loomed over Arnold's head. Ostensibly done, the contract was ignored by upper campus, who didn't approve it.

Meanwhile, Arnold assured fans and players that the investigation was nothing. Initially provoked by a self-reported violation involving enrollment paperwork, it dragged on for months. Through it all, Arnold maintained that he was in no danger, even after his assistant was reassigned following his implicated involvement in the fudged paperwork.

Before the NCAA had concluded its investigation, Arnold's firing took many by surprise when it came just two weeks before the start of the season. The players,

coaches and fans did not expect the removal.

Despite the curious timing, Arnold's departure shouldn't be a surprise. Further analysis of the situation reveals that it was always a likely outcome, even before the recent controversy.

A HISTORY OF INTRIGUE

Any that remain shocked that Arnold ended his UH career facing allegations of various improprieties regarding recruiting and player benefits should remember the circumstances under which Arnold first arrived at UH.

The Punahou graduate arrived in 2010 after his release from the University of Southern California's men's basketball coaching staff, following the O.J. Mayo recruiting scandal that resulted in post-season bans for the program. One of Arnold's top skills coming into Hawai'i was his ability to recruit talented players, which coincided with the USC controversy.

Hiring Arnold was already a risk in that respect. He may not have been implicated, but the timing of his departure from USC meant that

UH was gambling on someone with a murky past. Arnold allayed any concerns that the former Athletic Director Jim Donovan may have

One of Arnold's top skills was his ability to recruit talented players, which coincided with the USC controversy.

had, but that red flag should have been the first clue that Arnold's UH career might bring controversy to the program.

LEAVING CLUES

Next was the matter of Arnold's contract, a clue left by the athletic department itself. Though Athletic Director Ben Jay had reportedly offered him a 3-year extension, upper campus officials refused to approve the contract, leaving him signed only through the upcoming season. It was an interesting move that raised some eyebrows among observers, given the program's booming attendance and consistent win totals.

Typically, an institution that

plans on retaining a coach would not wait so long, as the uncertainty of that coach's future impacts recruiting. Star forward Isaac Fotu's swift departure, as well as the loss of freshman forward Sammis Reyes following Arnold's termination are sobering reminders of just how much the promise of coaching continuity matters to student athletes.

The biggest clue, however, came in the form of season tickets.

Each person who has held season tickets for UH football received a letter from Ben Jay encouraging them to renew. The letter previewed the team, listing the returning key players and some of the incoming talent. Most importantly, the letter addressed head coach Norm Chow by name in the opening and mentioned the newcomers to the coaching staff.

Basketball season ticket holders received a similar letter in August, with one notable difference.

Like the football letter, returning stars like Isaac Fotu and incoming talent like Negus Webster-Chan were hyped to encourage ticket renewals. Conspicuously absent, however, was any mention of Gib Arnold or the staff at all. It was a small difference, but one that may have tipped UH's hand long before the eventual firing of Arnold.

Combined with the NCAA investigation and Arnold's unsigned contract extension, such an exclusion points to UH already wavering in their commitment to Arnold. Though the timing of the firing seemed peculiar, a shrewd observer would have seen the writing on the walls much earlier. Arnold was no longer a part of UH's long-term plans, and they told their fans as such in a subtle manner.

BEN JAY'S EXPERIENCE

Perhaps the final indicator that Arnold's time was drawing near was the mere presence of Ben Jay.

Though Jay himself did not pull



SOURCE: USC ATHLETICS ▲

Arnold was an assistant coach at USC from 2005-2010.

and the aforementioned bowl ban. He saw Tressel fall from icon to pariah after he admitted to lying to the NCAA about his knowledge of the violations. He watched as the team lost its brightest star, Terrelle Pryor, to the NFL, choosing to abandon the program rather than face a suspension.

Though Jay may not have made the call himself, his past experience may have influenced UH's action against Arnold. In the midst of its own NCAA investigation, with rumors swirling about gifted iPads, altered paperwork and borrowed cars, the events that befell the Ohio State program may have driven UH to act as they did.

The timing of Arnold's firing right before the start of the season seems strange, until you realize that the NCAA investigation was just wrapping up. After seeing the devastation wrought upon Ohio State, the UH administration may have felt that firing Arnold ahead of the release of the NCAA findings might lighten the blow, particularly if they felt that Arnold was directly involved or knowledgeable of the infractions.

It would seem to be an effort to avoid the mistakes Ohio State made by retaining their own coach and suspending him for only two games as a part of their self-imposed sanctions, sanctions the NCAA viewed as too soft. Whether or not Jay himself pushed for firing Arnold may never be known, but his prior involvement in Ohio State's similar scandal cannot be ignored.

Arnold's firing seemed to catch everyone by surprise, including the coach himself. However, the events leading up to the conclusion, as well as the pasts of the people involved suggest that such an outcome was inevitable. Whether based on his shady past at USC, or the unusual behavior of upper campus and the athletic department, Arnold was destined to leave amid controversy.

Do you agree with Blake's Take? Tweet us @kaleosports.

//////////////////// Ka Leo O Hawai'i

SPORTS

sports@kaleo.org
@kaleosports

Nick Huth
Sports Editor

David McCracken
Associate Sports Editor



MARK LONDE / KA LEO O HAWAII ▲

Ikaika Woolsey completed just 16 of 47 passes against the Rams.

Road to ruin

DAVID MCCRACKEN
ASSOCIATE SPORTS EDITOR

The University of Hawai'i Rainbow Warrior defense was run over by the Rams of Colorado State this past Saturday as the Rams totaled 293 yards rushing as a team. Hawai'i has now surrendered 1,110 yards rushing to opposing offenses in its last four games and, coincidentally, has lost its fourth straight game in the process while setting a new UH record for the most consecutive road losses in the program's history.

RAMMED

Colorado State was led by running back Dee Hart who accumulated 115 yards on 11 carries, a 10.5 yards per carry average and a rushing touchdown. Hart, however, wasn't alone in his efforts to decimate the Warrior defense. Rams quarterback Garrett Grayson threw for 278 yards and four touchdowns, three of which came in the first half of play.

UH's defense conceded 49 points to the Rams, the highest total of the season and the most since Nov. 23, 2013 when the Warriors conceded 59 points to Wyoming. Since the Warriors' last victory against Wyoming on Oct. 11 of this year, Hawai'i has given up 131 points in its last four games, an average of 32.7 points for the opposing team.

INACCURATE IKAIKA

Warrior quarterback Ikaika Woolsey led his offense to 22 points against Colorado State, the most points the team has scored on the

road all season. However, Woolsey was not the reason the team put points on the board.

Woolsey and threw for 192 yards, one touchdown two interceptions, on 47 passing attempts. Of those 47 attempts, Woolsey completed 16 of

since the team's matchup with Wyoming on Oct. 11.

Iosefa has only appeared in three games for the Warriors this season, but leads the team with five rushing touchdowns. The second most rushing touchdowns on the team

"It's tough right now. We have to come out every day like it's the last one."

— TEVITA LATAIMUA
LINEBACKER

them for a completion percentage of 34 percent, the lowest completion percentage in a game where he threw the ball more than three times in his career at UH.

Through 10 games this season, Woolsey has thrown for 1,908 passing yards with nine touchdowns and nine interceptions. He owns a completion percentage of 48.5 percent.

RUSHING WOES CONTINUE

Despite Warrior running back Joey Iosefa being back in the lineup after serving his three game suspension, the Warrior offense continued its struggles running the ball. The Warriors ran for 141 yards as a team, but no rusher was able to rush for more than 64 yards.

Iosefa led the Warriors in rushing with 64 yards on 19 carries for a 3.4 yards per carry average in his return, including a rushing touchdown in the second half. In fact, 64 yards was the highest rushing yardage total that a UH running back has accumulated in a single game

are two, where both running backs Steven Lakalaka and Diocemy Saint Juste share that honor.

ROADKILL

The Warriors dropped their fourth straight game of the season to the Rams, and now own a 1-4 conference record since starting 1-0 in Mountain West play. Additionally, the Warriors now own a 0-4 record for road games this season.

Warriors head coach Norm Chow has not tasted success away from Aloha Stadium in his tenure at the program, as Saturday's loss resulted in the team's 16 straight road loss dating back to 2012, Chow's first season as head coach.

Sixteen consecutive road losses mark a new UH record for most consecutive road losses in the school's history. In fact, the Warriors have not won a road game since Nov. 26, 2011 when Greg McMackin was the head coach.

//////////////////// Ka Leo O Hawai'i

Sound Bites

"We played a very good football team. They're a team that's disciplined, a team that does things the right way and they took advantage of some of the weaknesses we had."

NORM CHOW
HEAD COACH



"It's been tough. I'd love to get a few wins before I finish up here at Hawai'i."

SCOTT HARDING
SENIOR CAPTAIN

"We have a good game plan but at the end of the day, we just didn't execute."

IKAIKA WOOLSEY
STARTING QUARTERBACK

Beyond the Score

		
PASSING YARDS	211	287
RUSHING YARDS	141	293
TIME OF POSSESSION	29:17	30:43
THIRD DOWN CONVERSIONS	48%	62%
FIRST DOWNS	21	26

Looking Ahead

SAN JOSE STATE



RECORD	3-6, 2-3 MWC
GAME TIME	Nov. 15 AT 1:30 P.M. PT
LOCATION	San Jose, California
SERIES	Utah State leads 7-6
LAST GAME	Lost 38-24 AGAINST FRESNO STATE
WATCH	Pay-Per-View

WEEKLY ROUNDUP

Nov. 2 to Nov. 8

NICK HUTH
SPORTS EDITOR



SOCCER

Last Wednesday, the Big West Conference announced player honors that were selected by the nine coaches in the conference. Five members of the Rainbow Wahine soccer team earned accolades, despite the team failing to improve its record for the first time under head coach Michele Nagamine and missing postseason play.

Krystal Pascua, Storm Kenui and Lidia Battaglia were named to the All-Big West second team, with Pascua notching her third all-conference honor. Her sister, Kama Pascua earned an honorable mention, while scoring the second-most goals on the team in 16 starts. Freshman forward Sonest Furtado was named to the all-freshman team with four goals and three assists.



SOFTBALL

As part of its fall schedule, the University of Hawai'i softball team hosted and won its Kama'aina Tournament last week. The Wahine won three straight games by double digits as they only allowed one run in the final game of the tournament. After shutting out BYU-Hawai'i and UH-Hilo 12-0 and 10-0 respectively, Hawai'i defeated Chaminade on Saturday by a score of 16-1. Their final game of 2014 will take place on Nov. 15 against the alumnae at 6 p.m.



MEN'S VOLLEYBALL

For the first time this year, the men's volleyball team took to the court to play against UC San Diego, Long Beach State and Lewis University in preseason action. Hawai'i split its team into a pair of squads who faced off against the same combination from the other schools. The 'Bows went 5-1 and 3-3 respectively against Lewis and LBSU, while the team defeated UC San Diego earlier in four sets. On Sunday, Hawai'i faced off against UCLA, Cal State Northridge, Stanford and USC in the second round of the tournament.



WOMEN'S VOLLEYBALL

As Big West Conference play winds down, the Wahine volleyball team faced off in a pair of high stakes matches against Long Beach State and Cal State Northridge. Heading into the game against Hawai'i (17-6, 9-3), LBSU (20-4, 10-0) was undefeated in conference play at the top of the conference, while UH sat in second place. The two teams duelled through five sets of action at the Stan Sheriff Center, but after Hawai'i won the first two sets, the energy left them as they dropped the final three sets in front of the home crowd to lose the match.

Next up for the Wahine was CSUN, which was firmly placed in the middle of the conference standings. Hawai'i was able to dispatch the Matadors in four sets on Saturday, behind a well-rounded performance.

Nikki Taylor led the Wahine with 15 kills and Kalei Adolpho chipped in 10 blocks, and the entire team was able to hit .336 for match to make for an efficient offense.

[ALL PHOTOS] FILE PHOTO / KA LEO O HAWAI'I

UNIVERSITY OF  HAWAI'I ATHLETICS

50TH ANNUAL OUTRIGGER RESORTS RAINBOW CLASSIC

THURSDAY - CAMPOUT AT COCONUT GROVE @ 5:00 P.M. WITH FREE FOOD, ACTIVITIES, AND MORE!

FRIDAY - PEP RALLY AT CAMPUS CENTER @ 12:00 P.M. (FREE BENTOS TO THE FIRST 100 STUDENTS)

FRIDAY VS. ARKANSAS-PINE BLUFF @ 7:30 P.M. - WARRIOR TATTOO NIGHT (BEST PAINTED STUDENT WINS A GOPRO)

SATURDAY VS. CSU BAKERSFIELD @ 7:30 P.M. STAR WARS NIGHT (700 FREE LIGHTSABERS)

MONDAY, NOVEMBER 17 VS. HIGH POINT @ 11:59 P.M. ESPN MIDNIGHT BLACKOUT (STUDENT WITH THE BEST SIGN WINS AN IPAD! 700 FREE BLACK T-SHIRTS. COME EARLY AND GET ON ESPN!)

AT THE STAN SHERIFF CENTER (ENTER AT GATE B)

MANOA MANIACS: HAWAII.UHMANOAMANIACS.COM

THERE WILL BE A TAILGATE PARTY AT 5:30 P.M. ON FRIDAY AND SATURDAY, AND AT 10:00 P.M. ON MONDAY (NOV. 17) AT "COCONUT GROVE" (LOCATED ON THE WEST SIDE OF THE STAN SHERIFF CENTER), WITH FREE FOOD, DRINKS, MUSIC, AND PRIZES!

FREE ADMISSION WITH VALID UH MĀNOA ID



COMING UP THIS WEEK

Tues • Nov. 11th

The Color Vibe 5K

9 a.m.
99-500 Salt Lake Blvd.
Cost: \$40-\$50

Join us as we throw #VIBerant colors on you as you run, walk or even skip through our color stations and finish off with a HUGE dance party full of color throws, a DJ and a ton of fun. Kids 12 and under are free with a paid adult.

Wed • Nov. 12th

Heavy Riddims

9 p.m. - 2 a.m.
Eleven44
1144 Bethel St.

Positive Regime Sound and friends will take you on a music journey through reggae history. From its foundation in Ska, and Roots through its reincarnations through EDM and right back to now with its groundbreaking dancehall vibes that have laid paths for the most veteran of producers.

Thurs • Nov. 13th

So Fancy!

10 p.m. - 2:30 a.m.
Addicton Nightclub
1775 Ala Moana Blvd.
Cost: \$10

Special monthly event featuring DJs Zilla and SuperCW with Anit and Rox on the Mic.

Fri • Nov. 14th

Evil Activites (Netherlands) Honolulu

9 p.m. - 2 a.m.
Nextdoor
43 N. Hotel St.
Cost: Adv. GA \$25
Ages 18+

Hard Dance Hawaii & Odin Works present Evil Activities (The Netherlands/Neophyte Records) accompanied with MC E-Life of Rotterdam.

Sat • Nov. 15th

12th Planet

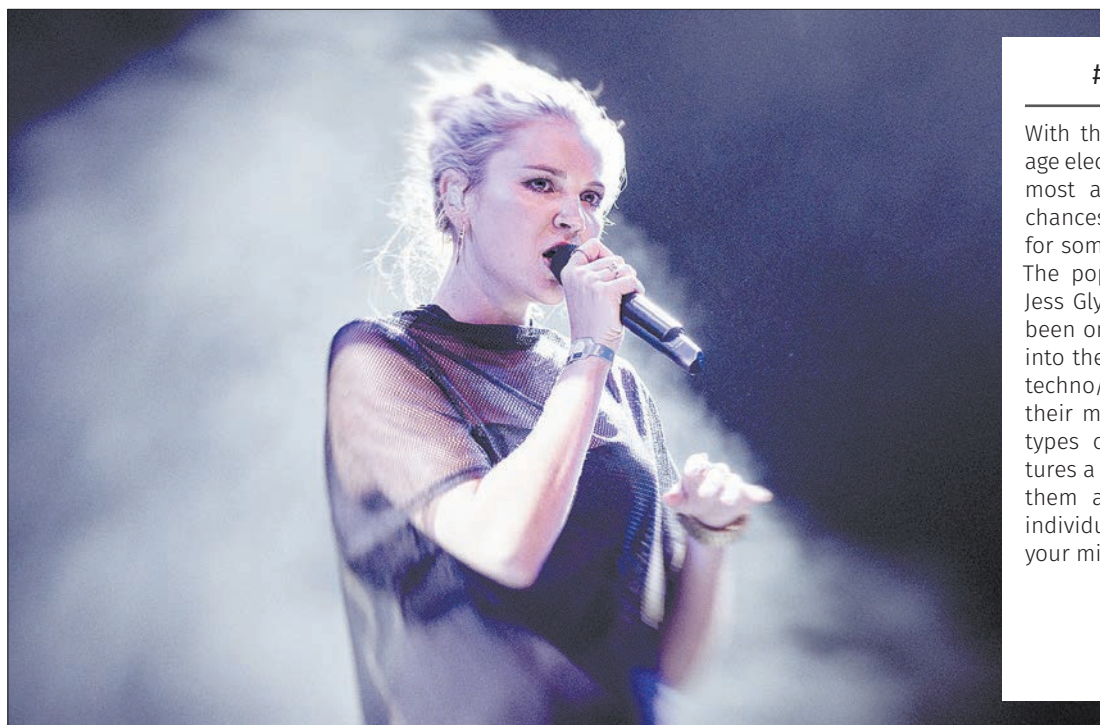
10 p.m.
The Republik
1349 Kapi'olani Blvd.

Prepare for another massive BASS dance party coming up.

ALL THINGS TRENDY

The inside scoop on all things worth knowing about on social media.

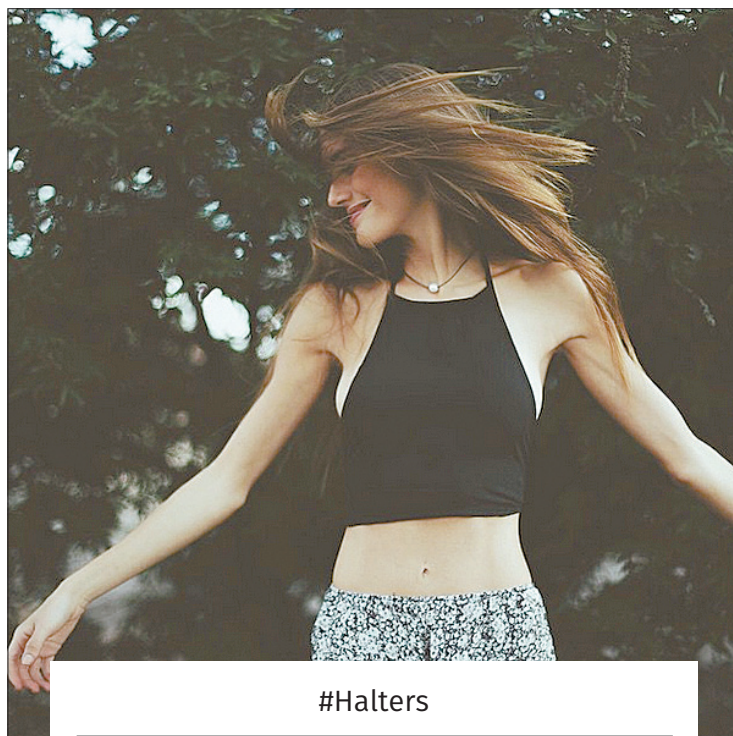
Evangeline Cook Aloha Nights Coordinator



#SomethingNew

With the common tempo of New-age electric dance music scene that most artists have conformed to, chances are your ears are aching for something new and refreshing. The popular song, "Rather Be (ft. Jess Glynne)" by Clean Bandit has been on the radio a lot. If we dive into the many other songs by this techno/pop band, you will find their music incorporates different types of sounds. Each song features a different vocalist and gives them a chance to release their individuality. Take a listen and let your mind wander.

NRK P3 Flickr



#Halters

They say that history repeats itself, and evidently, this applies to fashion as well. This popular '90s look features lots of belly, no cleavage and is often accompanied by high-wasted shorts/jeans. You can find halter tops at any popular department store and they come in all sorts of colors and sometimes even have a psychedelic design on them.

@jaclynmariee_ Instagram



#TheWalkingDead

Are you keeping up with your favorite zombie-killers? Brace yourself because a brand new episode comes out this week. After finding a new group of survivors, the drama doesn't end there. The group is faced with another challenge that catches them off guard. Tune in to AMC on Sunday nights for brand new episodes.

Gianluca Ramalho Misti Flickr

More trends:

Keep up with trends by visiting alohanights.org

#SweaterWeather

It might be time to update your wardrobe. Get your hands on this season's trendiest sweaters. Cashmere, simple pullovers, cardigans and button-ups are all the rage this season.

@TheTVShows

"Sometimes it's easier to just say you don't care than to explain all the reasons why you do." -Sex and the City

Follow @TheTVShows on Twitter for daily quotes from your favorite TV shows.

• Hear directly from us every week – subscribe to our newsletter. Subscribe here: tinyurl.com/qx2wsdl

•Party: Learn how to turn a popular movie into an epic drinking game.

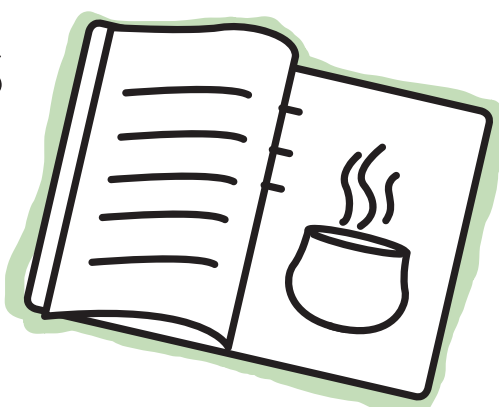
•Dine: Get on the sweet potato train. We have a recipe that will make your taste buds go wild.



Lifestyle recipes

Evangeline Cook Aloha Nights Coordinator

With the hustle and bustle of midterms intruding on your already-busy life, you might find yourself slacking on a certain level of your health. What better way to stay healthy than to cook your own food? This way you don't have to worry about added preservatives that nobody told you about. Everything you put into your body is in your control. Here are a few healthy recipes that fit right into your lifestyle.



FOR THE KALE LOVERS

Some love bananas, some love meat, and some of us just love greens, especially kale. For those of you who absolutely adore kale in every shape and form, here is the easiest way to snack on this vegetable, along with a simple recipe. Not to mention it's 100 percent organic and healthy.



1 BUNCH OF FRESH KALE



OLIVE OIL



SALT

Directions: Preheat your oven to 300 F. Remove the center stem of the kale by cutting the leaf off either side, then cut the leaves in half to make them smaller. Tear the kale into small pieces, but not too small as it will shrink in the oven. Wash the kale and then dry it out as best as possible. You can do this by laying the leaves in between a towel and patting it dry. Next place the kale on a baking sheet, making sure the leaves don't overlap. Sprinkle a little bit of oil on top of the kale along with salt. Bake the kale for five minutes and then check on it. If you feel you want them a little crispier, then leave them in for about three more minutes. Let them cool, and enjoy.



FOR THE RUNNER

If you're a cardio freak, it is important that you load up on carbohydrates. Pasta is a great source of carbs and can be filled with all sorts of healthy treats. Try this healthy pasta recipe to satisfy your cravings.



8 OZ.
BOW-TIE SHAPED
FARFALLE PASTA



1 CUP
REDUCED-FAT
FETA CHEESE



CHERRY
TOMATOES



3 CUPS
WATERCRESS
LEAVES



1/4 TBSP.
BLACK
PEPPER

Directions: Cook the pasta according to the directions. Put the watercress and the feta cheese in a bowl together and add black pepper to the bowl. Before completely draining the pasta, add about a quarter of the cooking water to the cheese and watercress to soften the cheese and let the leaves wilt a little bit. Mix the pasta with the watercress and cheese. Finally, add in the cherry tomatoes. Enjoy your carb-filled, vitamin-rich dinner.



FOR THE YOGI

For those who enjoy practicing yoga regularly, it is important to nourish your body with plenty of fluids and potassium. After a long yoga session, you might be craving a sweet treat. Here is a healthy recipe that is sure to satisfy your sweet tooth.



1/2 CUP
HEALTHY BUTTER
SUBSTITUTE



1/2 CUP
GLUTEN-FREE
FLOUR



SLICED
BANANAS



DASH OF
CINNAMON



VEGAN
COCONUT
ICE CREAM

Directions: Heat the butter substitute and flour in a sauté pan over medium-low heat. When the butter substitute starts to melt, add bananas to the pan. Cook the bananas gently, turning them over until they are golden-brown. Divide portions into a small bowl and mix in some cinnamon. Serve with coconut ice cream and enjoy.

COMICS

Fuel Your Body Well

At a market cooperatively owned by over 4,000 your fellow students, faculty and community members

Poke

"POH-keh"



The Hawaiian word for "slice or cut into pieces". The ancient Hawaiian version of poke included pieces of fish with skin and bone intact and condiments such as sea salt, limu (seaweed) and 'inamona (kukui nut). Poke is always made with raw tuna which is low in fat and very high in protein, not to mention vitamins B-12, iron and magnesium to fuel your daily workout and study sessions.

Stop by Kokua Market for our fresh poke. Our fish is local, wild caught and never frozen.

2643 South King Open Daily 8-9
www.kokua.coop
Free WiFi in the Courtyard

kokua market
HAWAII'S ONLY NATURAL FOODS COOP

Facio Bona facebook.com/faciobona

Mitchell Fong



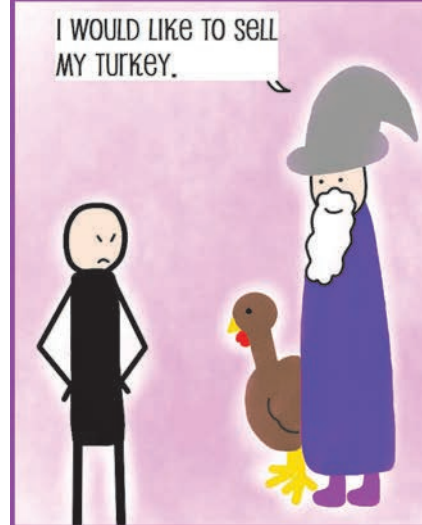
Labor's Lost

T.A. Cantero



THE TURKEY AND THE WIZARD

LAUREN MAU

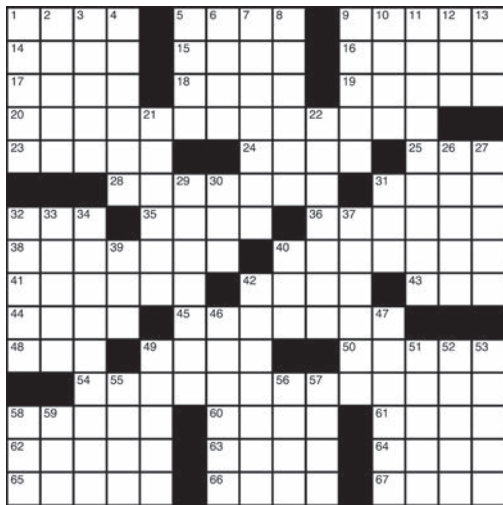


HUSKY www.facebook.com/kaleohusky

NICHOLAS SMITH



LOS ANGELES TIMES
DAILY CROSSWORD PUZZLE
Edited by Rich Norris and Joyce Lewis



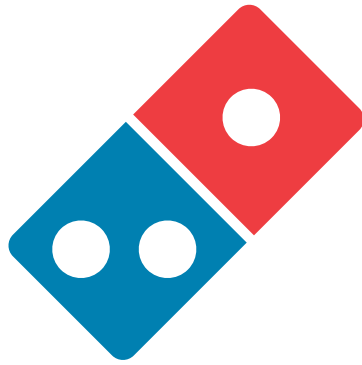
ACROSS

- 1 Digital periodical, briefly
 - 5 Part of CBS: Abbr.
 - 9 Comics title character who married Irving
 - 14 Kitchen floor covering, in Kent
 - 15 ___ Ness monster
 - 16 Earth pigment
 - 17 Sooner State city
 - 18 Architectural S-curve
 - 19 Rays of light
 - 20 Taking the top spot
 - 23 Roman fountain
 - 24 Volcano in Sicily
 - 25 "What's happenin'?"
 - 28 In the least favorable case
 - 31 Brit's "Bye-bye"
 - 32 Cleopatra's undoing
 - 35 Slim and muscular
 - 36 Annie with a gun
 - 38 With 40-Across, remaining focused
 - 40 See 38-Across
 - 41 Gold purity measures
 - 42 Brother of Cain
 - 43 Item in a P.O. box
 - 44 This, in Seville
 - 45 Fed up with
 - 48 For what reason
 - 49 Capricorn's animal
 - 50 Creates
 - 54 Betting it all
 - 58 "Hot corner" base
 - 60 Cowboys quarterback Tony
 - 61 R&B singer India. ___
 - 62 Exposed
 - 63 Explorer ___ the Red
 - 64 Reject as false
 - 65 Brass or bronze
 - 66 CPR pros
 - 67 It's a long story
- 4 Premium chocolate brand
 - 5 Walk laboriously, as through mud
 - 6 Quotable Berra
 - 7 The stuff of many postcard photos
 - 8 Burglaries
 - 9 Hooded snake
 - 10 King beaters
 - 11 "It's not true!"
 - 12 Pants bottom
 - 13 Decade tenths: Abbr.
 - 21 Knucklehead
 - 22 Chanted
 - 26 Sch. with a Chattanooga campus
 - 27 Subscription-based home entertainment
 - 29 Churchill of the United Kingdom
 - 30 Charity's URL ending
 - 31 Fight stopper, for short
 - 32 Cockeyed
 - 33 Hidden supply
 - 34 Free-spirited socializer
 - 37 Poise
 - 39 Former NBA center ___ Ming
 - 40 U.K. award
 - 42 Painting or sculpture
 - 46 "No argument from me"
 - 47 Electrical capacitance units
 - 49 Dizzy with delight
 - 51 Divided country
 - 52 Barely managing, with "out"
 - 53 Parting words, perhaps after the visit suggested by the starts of 20-, 38-/40- and 54-Across
 - 55 Twistable cookie
 - 56 Fail to mention
 - 57 Mythical birds
 - 58 TV schedule abbr.
 - 59 Actor Holbrook

DOWN

- 1 Put into office
- 2 Insignificant
- 3 Japanese cartoon style

GO TO: kaleo.org
FOR THE ANSWERS TO OUR
WEEKLY CROSSWORD



Domino's

**OPEN
LATE**

No minimum
for delivery!

Value Menu starts at

\$7.50

Order Online
dominos.com
or
Use your App

2424 S. Beretania St.
808.744.2283



INDULGE IN SOME
**HOLIDAY
TRUFFLE
DECADENCE.**



Manoa Marketplace
2754 Woodlawn Drive
Open Daily: 5:30 a.m. - 9:30 p.m.

su | do | ku

© Puzzles by Pappocom

Fill in the grid so that every row, every column, and every 3x3 box contains the digits 1 thru 9.

Puzzles will become progressively more difficult through the week.

Solutions, tips and computer program at www.sudoku.com

Go to www.kaleo.org for this puzzle's solution.

	6		1					3
7					2			9
				5		1	8	
4						3		
9								6
		5						1
	3	2		4				
6			9					7
	7				1		2	

HARD

#4

with the Purchase
of \$40 or more

\$10 OFF



DINNER · LATE NIGHT
BREAKFAST · LUNCH



KAIMUKI
808.738.8855

WARD
808.591.8891

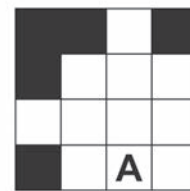
bigcitydinerhawaii.com

**OFFER VALID : M-TH 3 PM-10 PM
EXPIRES: December 10, 2014**

Valid for DINE-IN ONLY. Not Valid on ANY Holiday. Not combinable with any other coupon, offer, discount with \$50 Pre-Printed C-Cards.

Pathem™ the path word puzzle

topic: People in the News



"Katherine 'Kate' Upton"

Difficulty ★★☆☆☆ (200pts)

HOW TO PLAY:

Spell the phrase in the grid above it, writing each unique letter only once. The correct solution will spell the complete phrase along a single continuous spelling path that moves horizontally, vertically and diagonally. Fill the grid from square to square - revisiting letters as needed to complete the spelling path in order. Each letter will appear only once in the grid.



"Freeze"

visit www.Pathem.com

Careers begin here... Mānoa Career Center:

EMPLOYMENT

ON-CAMPUS PART-TIME

GREENHOUSE ASSISTANT

Lyon Arboretum
\$10.60/hour
Close Date: 11/14/14 or when filled

Assist in the care of a large variety of plants in Lyon Arboretum and Botanical Garden's greenhouses and Native Hawaiian Plant Garden. Duties: weeding, watering, fertilizing, planting, propagating, pest management, plant sales, and other duties related to greenhouse and garden maintenance. Desirable qualifications include a background in horticulture, botany, conservation biology or related field with prior experience growing plants. Great opportunity for someone interested in learning more about horticulture techniques.

Job Number: **128445**

OFFICE RECEPTIONIST/STUDENT TOUR GUIDE

Admissions
\$8.70/hour
Close Date: When filled

Primary role: office receptionist and student tour guide. Duties include answering inquiries from the general public and students; performing general clerical duties including typing, filing, simple word processing, handling mail-outs, running errands, conducting campus tours for prospective students and their families, and other miscellaneous duties as assigned. Possess basic knowledge of the University of Hawai'i at Mānoa.

UH Mānoa Federal Work Study Students Only

Job Number: **4175**

TASI APPLICATION DEVELOPER/ SERVER ADMINISTRATOR

Social Science Research Institute
\$10.60/hour
Close Date: 11/30/14 or when filled

Work with the ICT Specialists to design and develop web and database applications. Perform first tier technical troubleshooting of applications, servers, and network services. Work with ICT Specialists in resolving technical issues; receive and process service requests; establish and monitor video/web teleconference sessions; provide user orientation and training on use of applications and services; and other duties as assigned. Applicant must have successfully completed at least two (2) programming classes and one (1) database class. Must be familiar with Office applications.

Job Number: **133842**

OFF-CAMPUS PART-TIME

FISCAL CLERK STUDENT ASSISTANT

University of Hawaii Foundation
\$9.55/hour
Close Date: 11/30/14 or when filled

The assistant will be expected to perform a variety of clerical and office tasks as assigned. Primary duties include: Sort and distribute mail for Fiscal Department; Assist with check preparation and distribution; Scan orange forms and event forms onto network and IFAS; Input monthly cancelled checks for bank reconciliation; Assist with ORS payments, etc. The student must be registered either half-time (6 credits) or more within the UH system and must be able to work between 12-19 hours per week.

Job Number: **7328**

STUDENT PRODUCTION TECHNICIAN

PBS Hawai'i
\$7.75/hour
Close Date: 12/1/14 or when filled

Seeking responsible student to assist our Creative Services Department. On-the-job training includes learning to operate video cameras, video switcher, audio equipment, character generator, still store, and teleprompter during in-studio productions; also, train to assist with lighting and floor directing. Occasional field work required, which includes carrying equipment and driving company vehicles. College students interested in pursuing a career in production preferred. Hours vary weekly, depending on production schedule. No experience necessary. Clean drivers abstract a plus.

Job Number: **109902**

COMMUNITY BASED PROVIDER

Easter Seals Hawai'i
\$10.50/hour
Close Date: 12/31/14 or when filled

We are currently looking for a Community Based Provider to provide assistance and coaching to individuals with developmental disabilities to meet goals and outcomes that increase their independence, develop natural supports and friendships, and contribute to society. This position will coach these individuals in a variety of goals, including socialization, communication, and money management. 24 hours experience working with DD population preferred. Locations include: Leeward, Windward, Ewa, Kapolei and Honolulu.

Job Number: **121102**

OFF-CAMPUS FULL-TIME

MANAGEMENT TRAINEE

Star of Honolulu
Salary: TBD
Close Date: 1/30/15 or when filled

Seeking Management Trainees to gain training and experience working aboard our boat day/night cruises. Duties include, but are not limited to: Departmental Operational, Daily/Weekly/Monthly Administrative tasks, Supervisory of Department Staff, Guest Services, and Training of New Staff. Must have excellent interpersonal and communication skills and be comfortable with public speaking. 1-2 years of customer service experience required, Bachelor's degree and supervisory experience preferred.

Job Number: **137063**

SPECIALIST II/III

Central Pacific Bank
Salary: TBD
Close Date: 11/30/14 or when filled

Assists the assigned Wealth Management Team in managing and growing a portfolio of high valued clients in loan and deposit accounts/relationships that meet with established lending and operational policies and provides maximum profitability to the Bank with a minimum of risk. This role encompasses initial reception and/or prospecting, information gathering, analyzing, profiling, documenting, closing, follow-up service, and various reporting requirements.

Job Number: **137053**

LITERACY LEAD TEACHER

Kamehameha Schools
Salary: \$51,700.00
Close Date: 11/19/14 or when filled

Focuses on the improvement of public schools by providing literacy support and leadership in the implementation of best practices and fostering the growth and development of teachers, support staff, and leaders. Designs and encourages use of cutting-edge, quality professional resources/tools that will promote powerful teaching through multiple roles as a trainer/designer, coach, program manager, consultant, resource provider, process facilitator, and change agent.

Job Number: **137182**

INTERNSHIPS & COOPERATIVE EDUCATION (Co-op)

WHAT IS Co-op? Like internships, Co-ops are education-based and career-related. It is a nation-wide program comprised of a partnership between the employer, the student and the university. Co-ops are paid and require a two semester commitment.

RISE – ENERGY EFFICIENCY FELLOW(S)

Kupu
Compensation: \$15.00/hour
Close Date: 11/14/2015 or when filled

Interns will support Hawaii Energy's energy efficiency programs in both the commercial and residential sector. The intern will work with business programs to fulfill pre- and post-retrofit inspections to determine eligibility and compliance of project and will also work to evaluate Hawaii Energy's residential program rebate offerings and provide recommendations for new rebate programs. Seeking a current college student or alumni within 2 years, must be available to start in November 2014 and commit through June 2015.

Job number: **137028**

STORE MANAGEMENT SUMMER INTERNSHIP PROGRAM

Macy's Inc.
Compensation: \$15.00/hour
Close: Date 11/15/2014

This internship is a structured 8-week, full-time program designed to strengthen your leadership skills & business acumen and give you the opportunity to test a career in managing people & business. The internship is offered in store locations nationwide, including Honolulu. Interns will be paired with a Sales Manager mentor, who will model leadership best-practices and help you grow through continuous constructive feedback.

Applicants must be a sophomore or junior from an accredited university. Cumulative 3.0 GPA minimum is preferred. All majors will be considered for this opportunity.

Job number: **132123**



MĀNOA
career center

UPCOMING CAREER WORKSHOPS:

How to Travel Around the World With One Carry-On **Nov. 18**
2:00pm, QLC 208

14 Things You Should Know About the Interview **Nov. 19**
1:30pm, QLC 212

Resume & Cover Letter: Market Yourself on Paper **Dec. 3**
2:30pm, QLC 212

For more info & to sign up:
manoa.hawaii.edu/careercenter/students/workshops

Careers begin here!

Queen Lili'uokalani Center for Student Services 212
careers@hawaii.edu | (808) 956-7007
manoa.hawaii.edu/careercenter



To apply for these jobs, go to:
hawaii.edu/sece