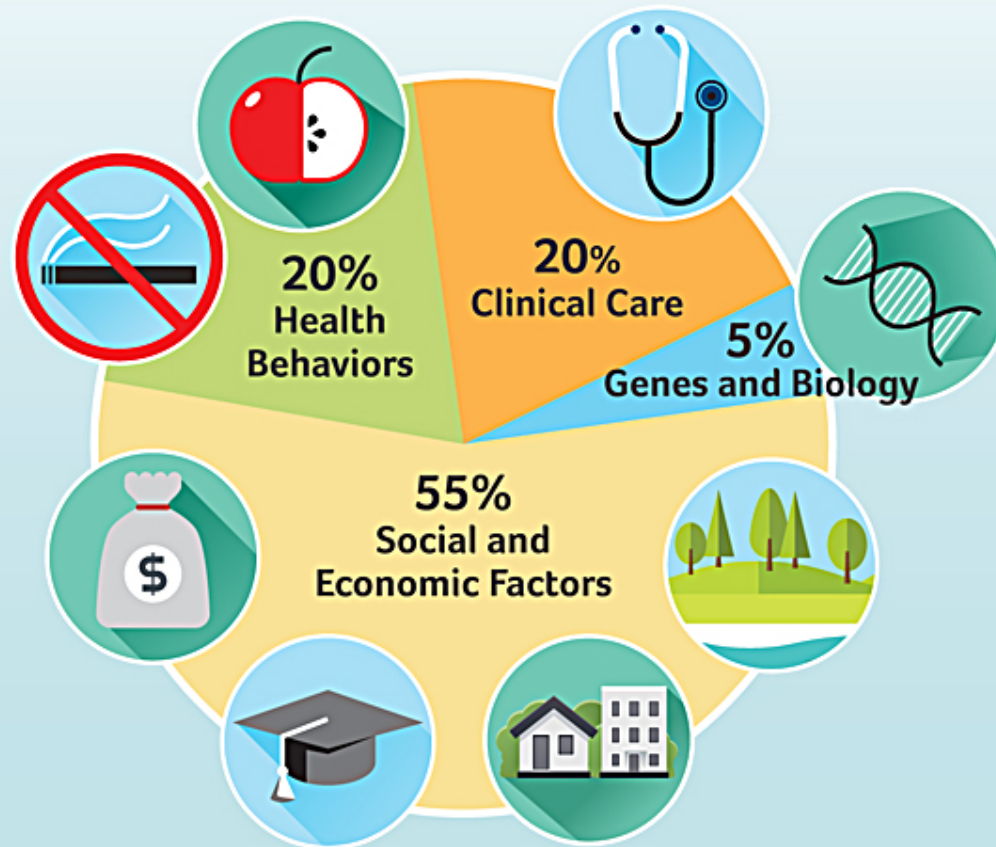


Health Equity and Disaster Resiliency

Closing the Hunger Gap
September 12, 2017

Health starts where we live, learn, work and play.

WHAT MAKES US HEALTHY?

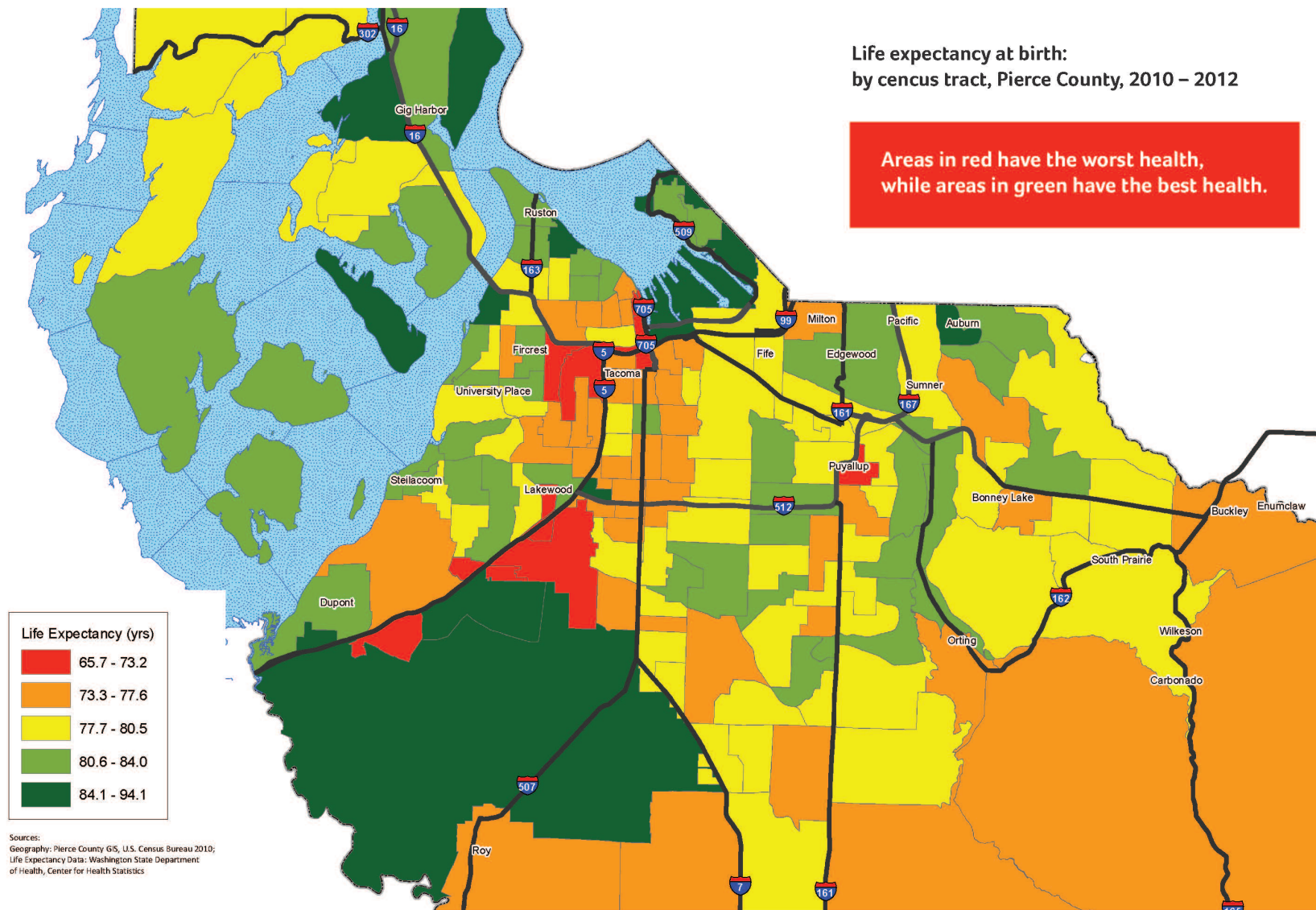


Adapted from <http://www.cdc.gov/socialdeterminants/FAQ.html>

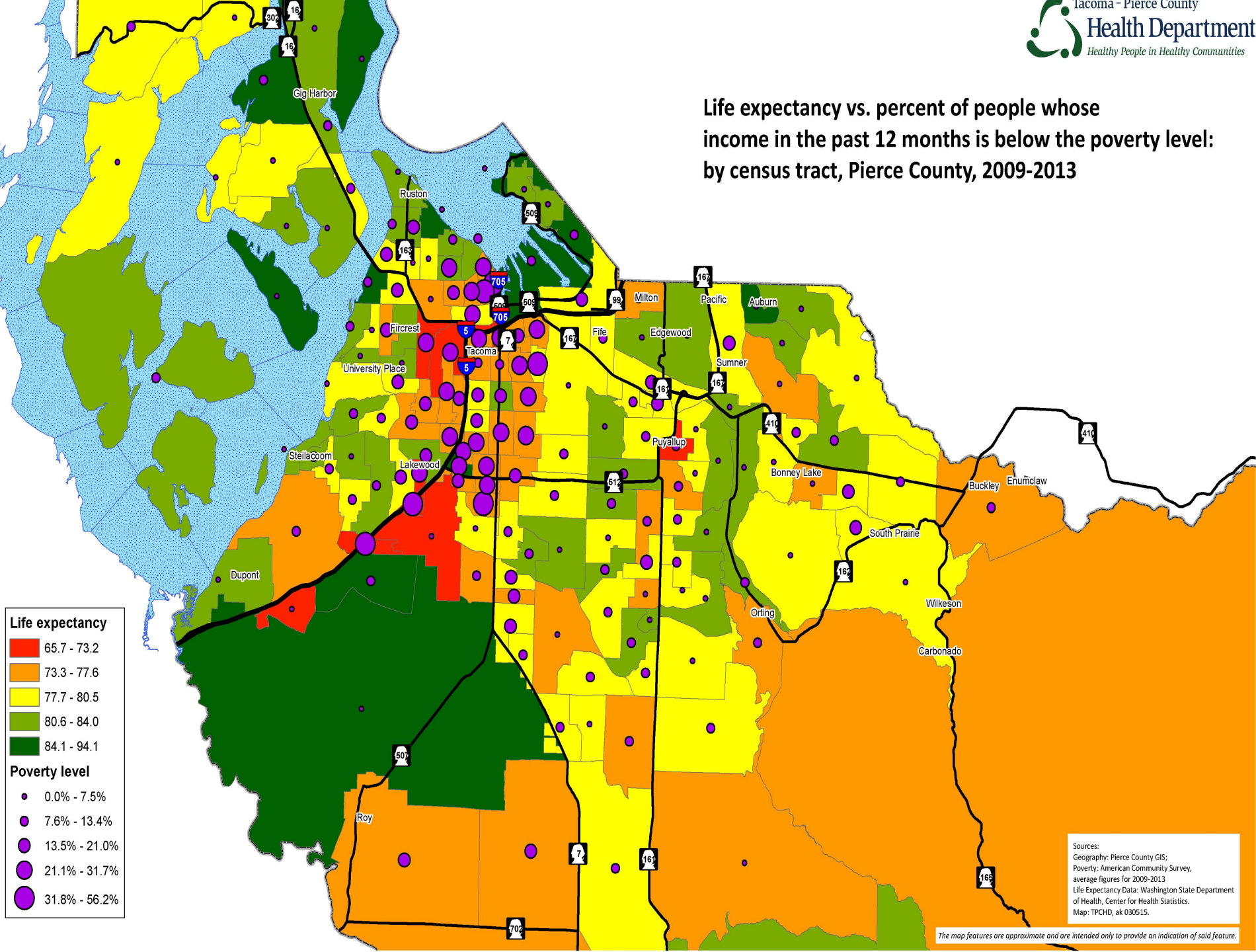
2010-2012 census data shows that Pierce County residents may be as much as 20 years apart in average life expectancy.

Life expectancy at birth:
by census tract, Pierce County, 2010 – 2012

Areas in red have the worst health,
while areas in green have the best health.

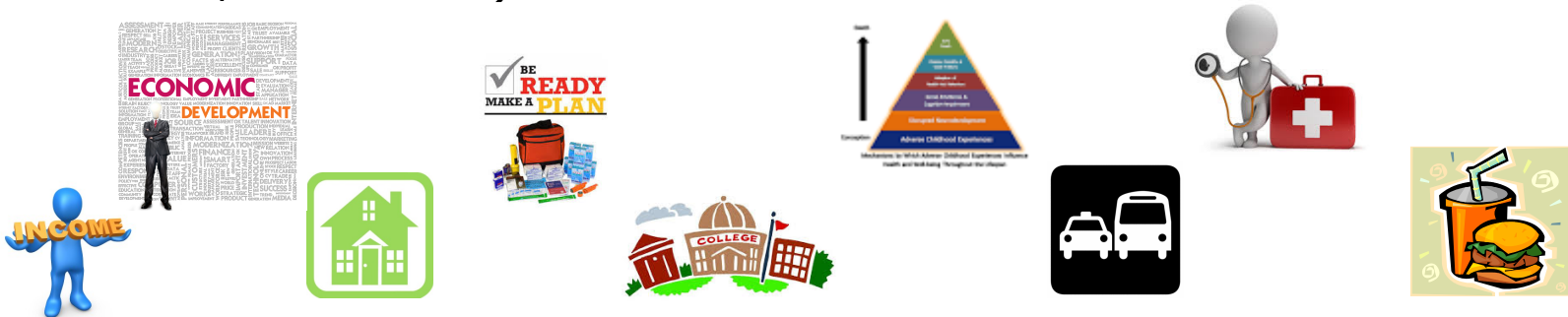


Life expectancy vs. percent of people whose income in the past 12 months is below the poverty level: by census tract, Pierce County, 2009-2013



Intersectionality

Resilience depends on a number of different social, economic, and environmental factors (income, education, housing, transportation, access to healthy foods, and more).

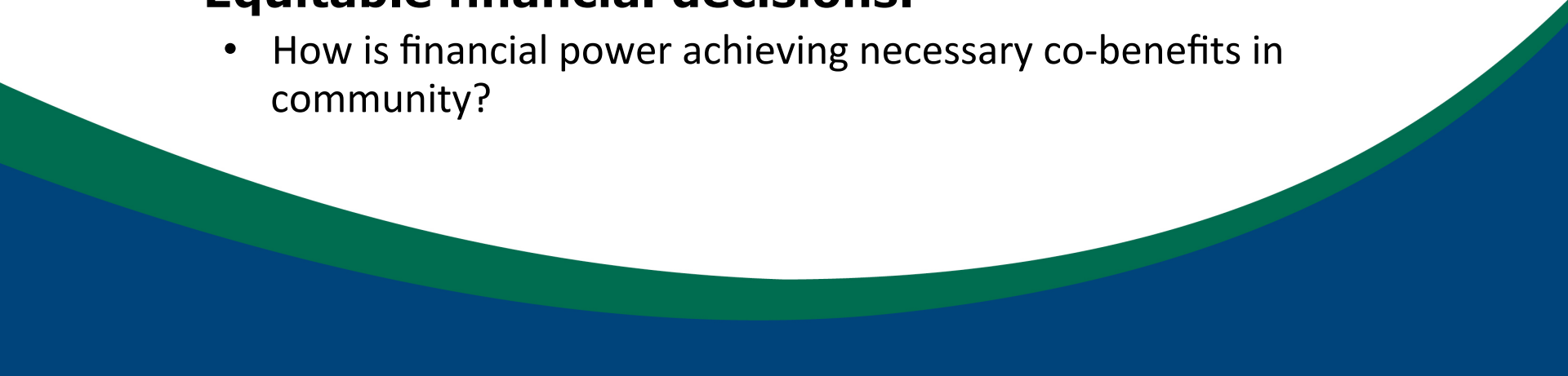


Systems and policies often (unintentionally) prioritize certain people and groups, creating inequitable foundations for health and resilience.

Food Resiliency

- **Food supply chains are incredibly fragile, even the smallest obstruction can have large impacts.**
 - < 4 days after Hurricane Harvey food stockpiles ran out of food.
 - I-5 is a lifeline for the Puget Sound food supply chain, without it supermarkets in the area will run low in a matter of days
- **Low income neighborhoods already face food supply issues, either from food deserts or low income.**
 - Families either can't afford to stockpile food or have no access during emergencies, exacerbating the issue.
- **Smaller-scale regional and local food systems are more resilient.**
 - Farmer's Markets
 - Policies to preserve local farmland have proved effective.

Equity and Resilience: Processes

- **Those most affected (and most vulnerable) must share the power.**
 - Planning
 - Decision-making
 - Budgeting (Participatory)
 - **Focus on areas of high priority.**
 - Different areas and groups of people experience emergencies differently, often due to social, economic, and environmental factors.
 - **Equitable financial decisions.**
 - How is financial power achieving necessary co-benefits in community?
- 

Thank You!

Jacques Colon

Health Equity Coordinator

Tacoma-Pierce County Health Department

jcolon@tpchd.org

253-370-5687

