



Draft

PRODUCT CARD

SHOWROOM

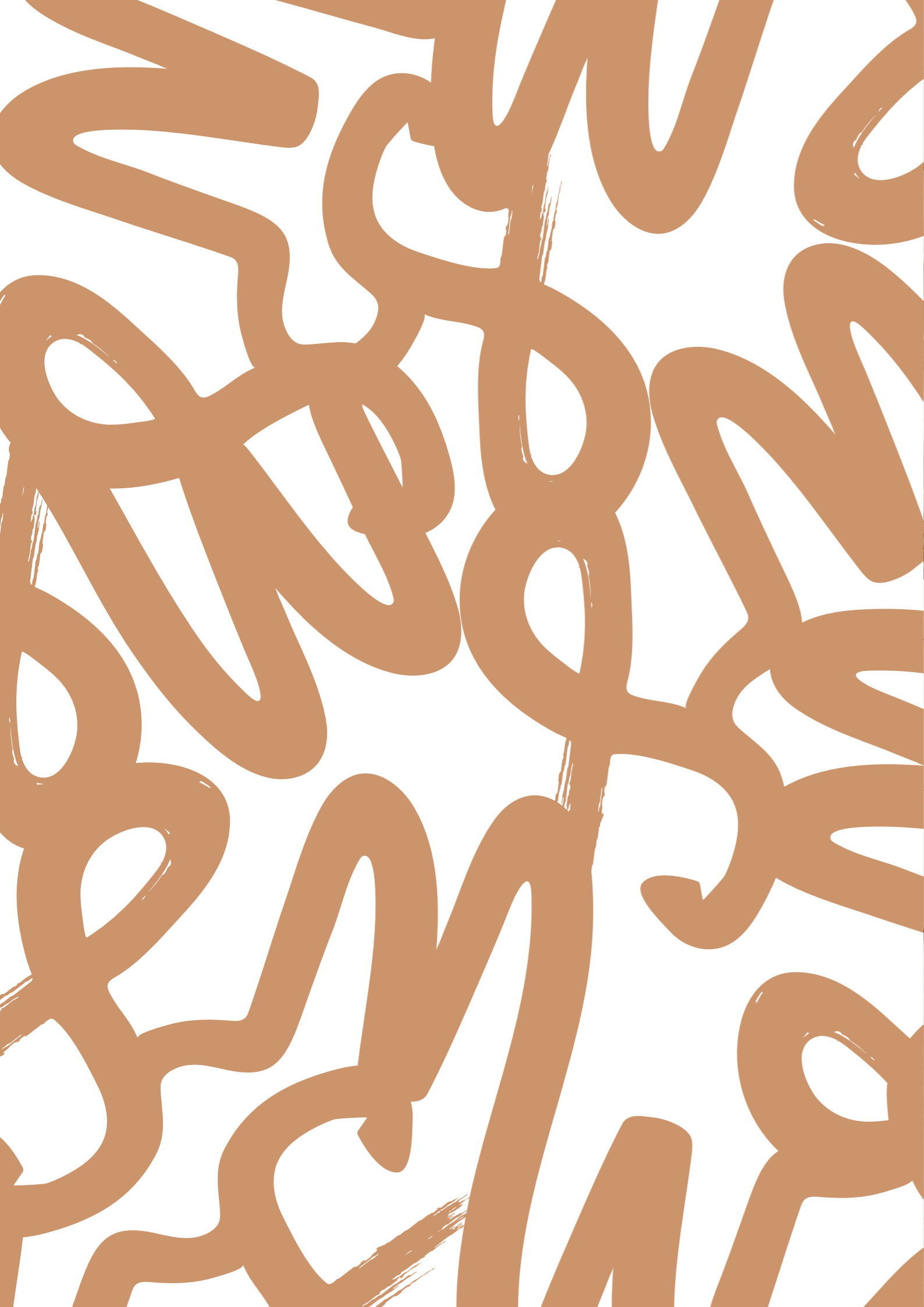
—
Parchment House
13 Northburgh Street
London EC1V 0JP

CONTACT

—
info@workstories.com
+44 (0)20 3735 5224
workstories.com



MADE IN
THE UK



ALBION

Draft

Meeting, Poseur, Station
and Bench

Designed by **ALBION**

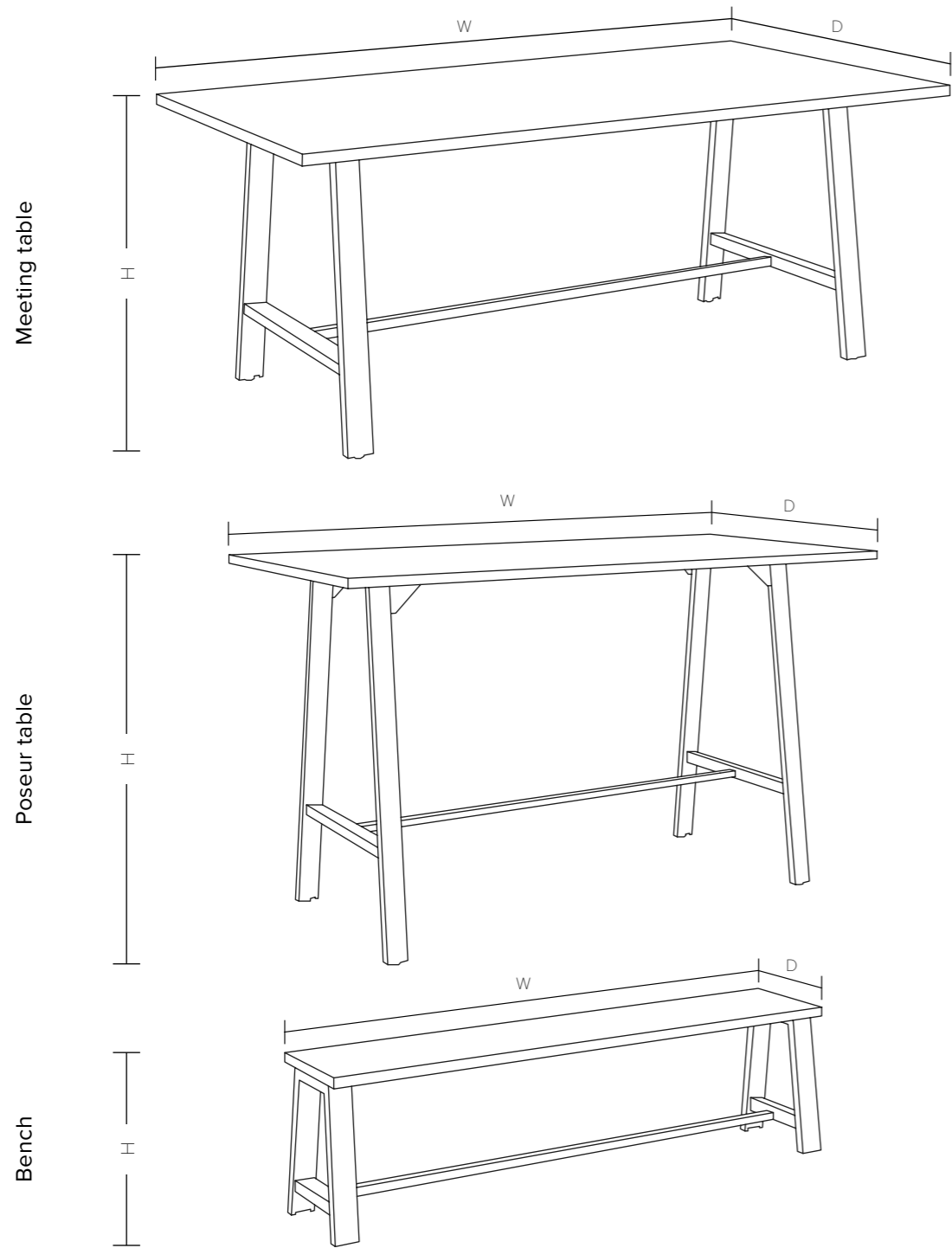
With its industrial/utilitarian inspiration, the Draft has been designed for social connection and co-operation within the hybrid working space. Perfect for creative meetings, hotdesking or grabbing a coffee with your colleagues, this collaboration table is the perfect blend of form and function.



DESCRIPTION

Albion furniture is handmade entirely in the UK to an almost infinite range of combinations. This is British craftsmanship made to last, for spaces that need to deliver.

Dimensions



Meeting table

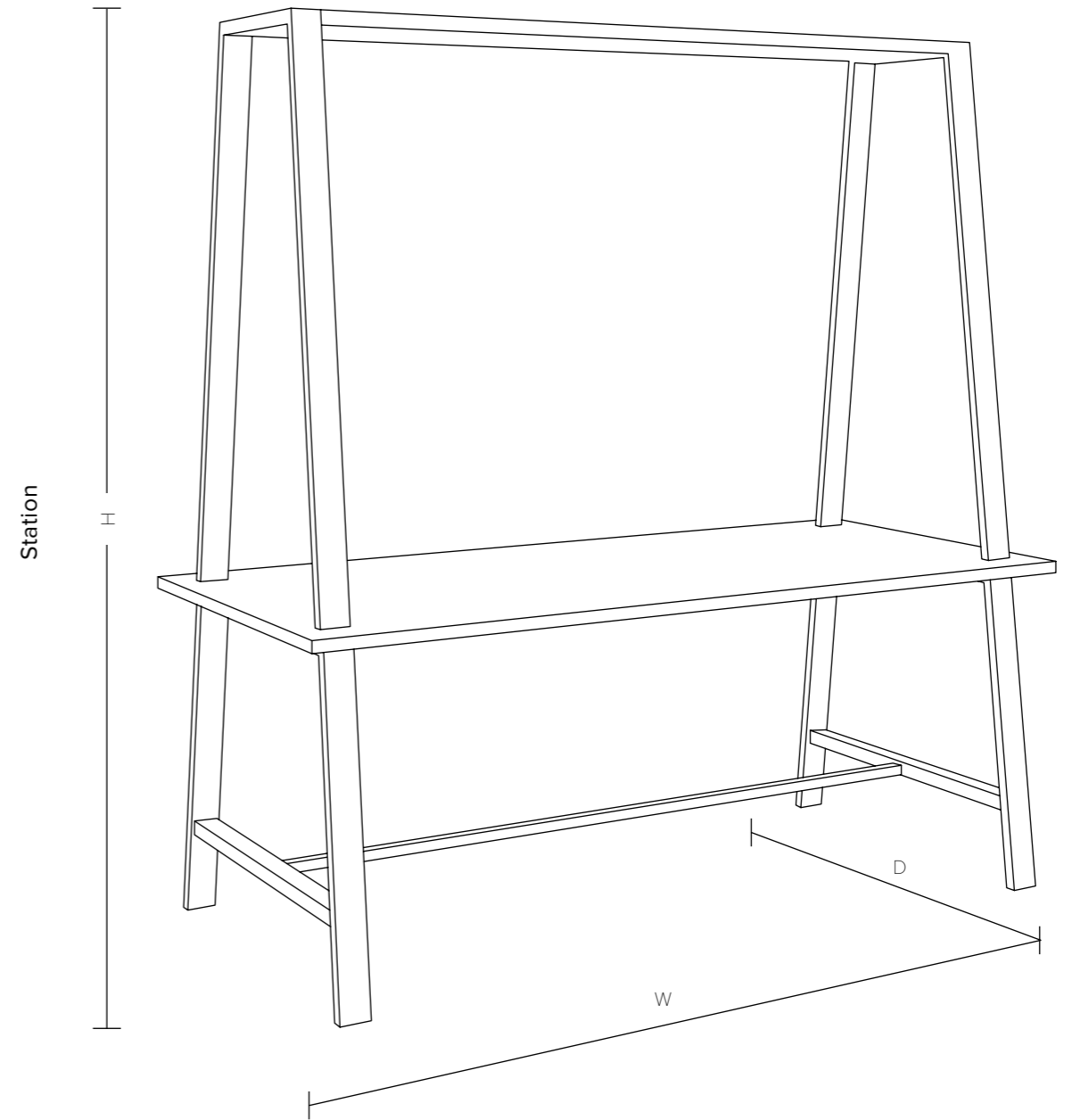
H: 740mm
D: 900/1000/1200mm (oversailing 100mm)
Single top - W: 1200/1400/1600/1800/2000/2200mm* (oversailing 200mm)
 *400mm oversail on width
Multi top - W: 2400/2800/3200/3400/3600/4000mm (oversailing 200mm)

Poseur table

H: 1100mm
D: 900/1000/1200mm (oversailing 100mm)
Single top - W: 1200*/1400/1600/1800/2000/2200mm** (oversailing 200mm)
 *100mm/**400mm oversail on width
Multi top - W: 2400/2800/3200/3400/3600/4000mm (oversailing 200mm)

Bench

H: 410mm
D: 350mm
W: 1000/1200/1400/1600/1800mm



Station

H: 740mm
D: 1000mm
Single top - W: 1100/1300/1500/1700/1900 (oversailing 50mm)
Multi top - W: 2100/2500/2900/3100/3300/3700mm (oversailing 50mm)

Accessories

Our meeting tables are available with an extensive range of power & data, found on [sourcetec.global](https://www.sourcetec.global).

Our meeting tables are also available with cable trays for your cable management needs and castors to make the table into a mobile and flexible workspace.



FEATURES

Framework

Frame construction

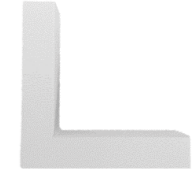
Draft is a robust and sturdy system designed with a three beam assembly for greater lateral stability.

Draft comes with a 25mm thick top and 60 x 40mm solid steel tube profile.

Frame colours available



BLACK
(smooth satin)



WHITE
(textured matt)



RAW STEEL
(smooth satin)



FEATURES

Draft

Tops

Top – 11x standard MFC finishes.
Bespoke finishes also available
(incl. Forbo, Fenix, Veneer or
Solid wood)



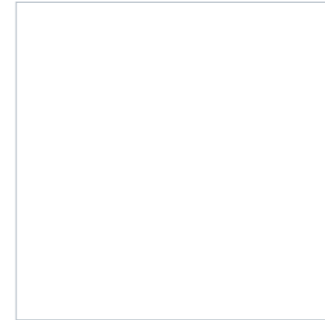
FINISHES

Top - MFC Finishes

Draft



MFC/ANT Anthracite
Kronospan U164



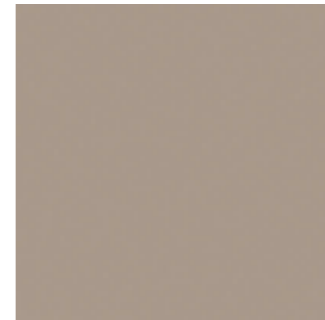
MFC/WH White
Kronospan K101



MFC/LGRY Light grey
Kronospan U112



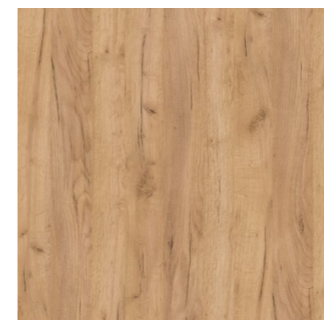
MFC/RG Reed Green
Egger U604 ST9



MFC/SG Stone grey
Egger U727



MFC/CG Cashmere Grey
Egger U702 ST9



MFC/GCO Gold craft oak
Kronospan K003



MFC/NNE Natural noble elm
Kronospan D5500



MFC/KO Kaisersberg Oak
Egger H3349 ST19

FINISHES

Top - Forbo & Fenix Finishes

FORBO



FOR/CHAR Charcoal
Forbo 4166



FOR/CONI Conifer
Forbo 4174

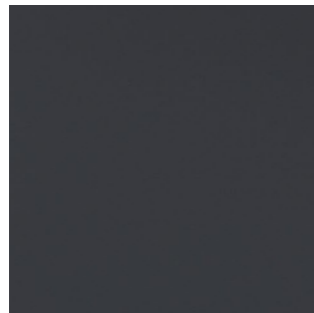


FOR/SB Smokey Blue
Forbo 4179



FOR/VAP Vapour
Forbo 4177

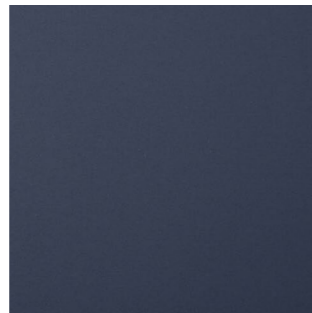
FENIX



NANO/GRIB Grigio Bromo
Fenix 0724



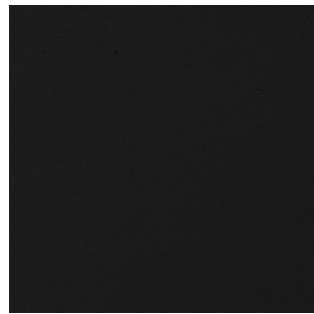
NANO/VER Verde Comodoro
Fenix 0750



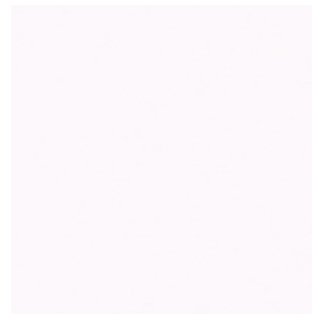
NANO/BLUF Blu Fes
Fenix 0754



NANO/GRIE Grigio Efeso
Fenix 0725



NANO/NERO Nero Ingo
Fenix 0720



NANO/BIAA Bianco Alaska
Fenix 0030

FINISHES

Top - Bespoke finishes

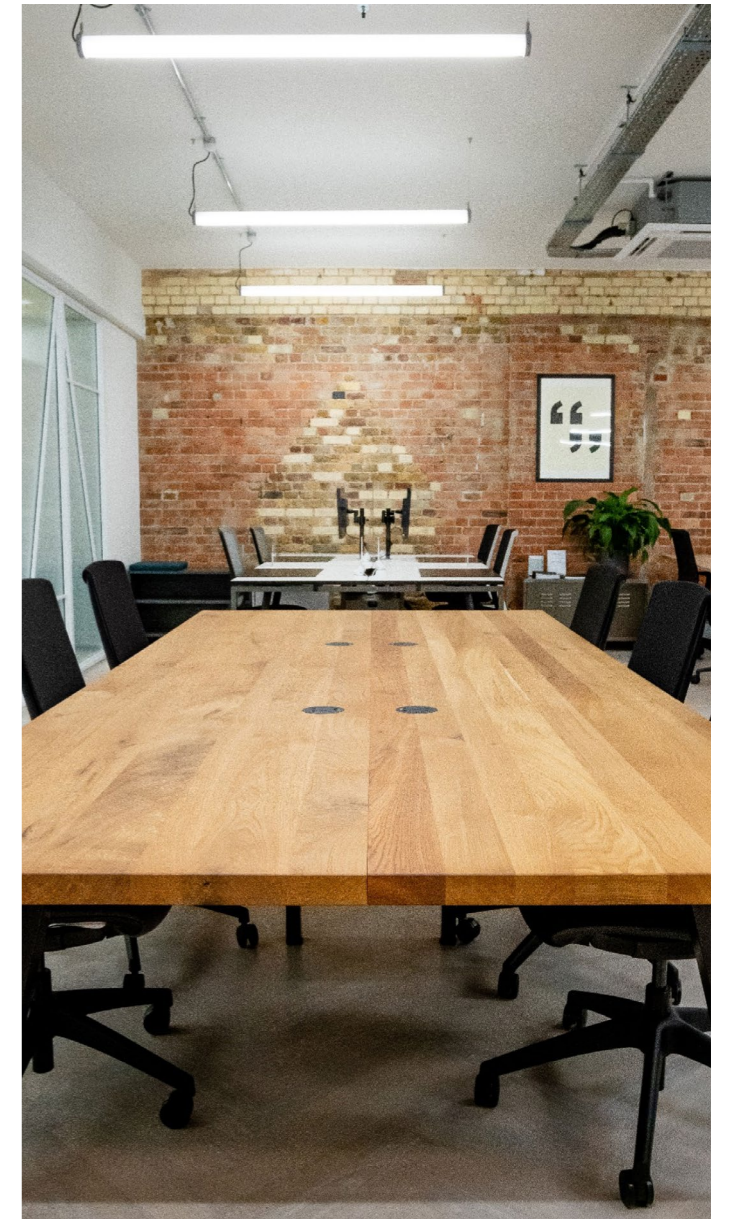
Bespoke options

Alongside the flexibility of our Albion system, we are also able to provide a wide range of fully bespoke table tops to fit a variety of different looks, requirements and budgets.

Some of the finishes available

- MFC
- Formica Laminate
- Forbo Linoleum
- Veneer
- Nanotech Laminate
- Solid Wood
- Distressed Wood

Featuring a variety of edge details and cable access solutions, there is very little we can't achieve. We have a wealth of samples available to view in our London showroom. Please contact us to arrange a visit.



Draft

BESPOKE FINISHES

Warranty

Workstories Ltd offers a 15-year warranty on our Albion range.

This applies only if products have been used within and by standard office conditions. Wear and tear must be expected from normal use and are not covered by the warranty.

General Care

FRAMEWORK

Albion frameworks are considered to be maintenance free. However, where cleaning of the frame is required, a mild detergent solution should be used. Use of harsh abrasives, acids, alkalis or bleaching products is not recommended.

CABLE MANAGEMENT

Ensure no liquid is allowed to access the power modules. Should this happen, isolate from the electrical supply immediately and consult a qualified electrician.

TOPS: MFC LAMINATE

All MFC products can easily be cleaned with a damp cloth and a mild soap, or detergent if necessary, and buffed dry with a clean cloth. Never use abrasive powders or scouring pads to clean stubborn marks. In extreme circumstances, a mild alcohol product can be used, however this must be followed by a damp cloth soaked in water, ensuring no alcohol residue is present afterwards.

TOPS: FORBO FURNITURE LINOLEUM

Please refer to the supplier's instructions: https://www.forbo.com/flooring/en-gl/products/linoleum/furniture-linoleum/bnare2#panel_104

TOPS: FORMICA LAMINATE

Please refer to the supplier's instructions: <http://www.formica.com/en/us/products/formica-laminate#documentsTab>

TOPS: FENIX NTM

Fenix options can be viewed [here](#)

WOOD FINISHES

The fine finish applied during manufacture is a hard protective lacquer resistant to moderate heat and spillages of some beverages, but not alcohol. All spillages should be wiped off immediately with

a slightly damp cloth to avoid any permanent staining. Always wipe surfaces in the direction of the wood grain. More stubborn stains can generally be removed by applying a mild, lukewarm non-abrasive soap solution using a soft lint-free cloth, gently rubbing over the stain working up a thin lather. Dry immediately using a clean soft cloth.

SAFETY WARNINGS

Furniture can be dangerous if improperly assembled or installed. Assembly should be completed by a qualified person following the provided assembly instructions.

Do not stand on furniture, as it could cause a fall. With assistance of another person, always lift, do not drag large or heavy furniture into position.

Environmental Practices

Workstories is dedicated to being environmentally conscious. We strive to ensure the continued availability of natural resources for current and future generations, and as part of our mission, we recognise the responsibility to protect human health and the environment, and to continually improve our operations.

To carry out this commitment, it is our policy to ensure all our factories:

Meet or exceed the requirements of all environmental laws and regulations applicable to our operations.

Limit our impact on the environment to the extent practicable and work to reduce recognised environmental risks to our employees and the communities in which we operate by employing safe technologies and operating procedures.

Continually assess our environmental programs and monitor our environmental performance.

Have operating policies and programs in place to implement our Environmental Quality Policy.

Workstories guarantees limited carbon footprint for our products. Workstories is a full member of FIRA and FISP. We hold FSC, ISO9001 and ISO14001 certifications.



Last updated: 01/11/2022

workstories..

workstories.com