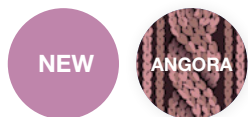


Miss World Hungary 2017

Crystal Nails[®]

2017/2018 WINTER EXTRA





NEW! ANGORA CRYSTALAC –

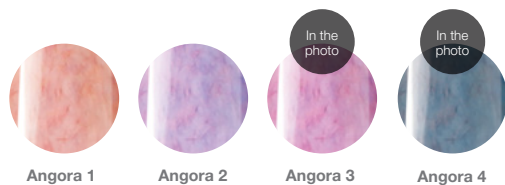
FLUFFY EFFECT CRYSTALAC

Fluffy 3 STEP CrystaLac effect. With them you can create super winter sweater designs besides the classic christmas patterns. Can be combined with RoyalCream gel in order to create unique winter designs. Cure time in the UV lamp 2-3 mins, in LED: 1-2 mins (according to the strength of the lamp).

4ml –



In 4 fluffy colors:

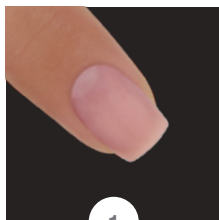


CN TIP: CAN BE COMBINED WITH ROYALCREAM GEL IN ORDER TO CREATE UNIQUE WINTER DESIGNS .



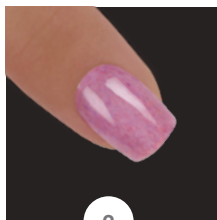
ANGORA CRYSTALAC AND ROYALCREAM GEL STEP BY STEP

BY EDINA SIKARI



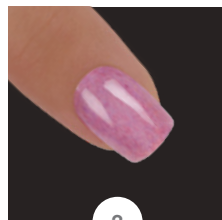
1

As the first step, sculpt the nails with Cover Pink and Transparent Pink Powder. File the nails to the desired shape.



2

Apply the first layer of Angora CrystaLac nr. 3, cure it in the UV lamp for 2-3 mins.



3

Apply the second layer Angora CrystaLac nr. 3, cure it in the UV lamp for 2-3 mins.



4

Paint patterns with Art Design brush and RoyalCream Gel 10, 8, and 6 colors. Cure the nail in the UV lamp for 1,5 mins.



5

Cover the nail with Cool Top gel , then cure it in the UV lamp for 1 min.



6

As the final step, paint the patterns with RoyalCream Gel 1 and 10. Cure it in the UV lamp for 2-3 mins.

NEW

NEW! 3 STEP CRYSTALAC TREND-COLORS 2017/2018 WINTER

OUTSTANDING DURABILITY AND VIBRANT COLORS IN 3 STEPS

The most beautiful time of the year is coming. Prepare for the holiday season with the 3 STEP CrystaLac winter trend colors. The NEW 3S74 Glowing hawthorn combined with the NEW 3S77 Olive will surely bring the christmas atmosphere to your clients. If you don't have any idea for the New Year's Eve themed party nails, the NEW 3S73 Peach Champagne Cocktail will be a perfect choice. But the clients will also adore the NEW 3S76 Diva Blue, what is a must have accessory to every night queen. If you want to chase away the cold freezy days, you will surely spice up the life in the salon with the NEW 3S75 Argentine tango. And if your client is only interested in watching the snow-covered landscape the perfect color for her is the NEW 3S72 Rhinestone.



3 WEEKS DURABILITY!

THE MOST PROFESSIONAL SOLUTION!

PROFESSIONAL!

4ml –
8ml –



1 NEW 3S75 , Argentine tango 3 STEP CrystaLac. (by Alexa Méhész)

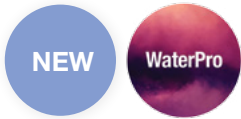
NEW

FULL DIAMONDS 3 STEP CRYSTALAC KIT (4x4ml)

Sparkling never gets boring! Especially when the holidays are coming. In the Full Diamonds 3 STEP CrystaLac kit you can find every color, what are essential in the advent season. The kit contains:

3SFD1, 3SFD2, 3SFD3, 3SFD4





NEW! WATERPRO CRYSTALAC CLEAR, FOR THE PROFESSIONAL „WATERWAY” TECHNIQUE

NON-CLEANSING, SOAK OFF CRYSTALAC, FOR PROFESSIONAL „WATERWAY” TECHNIQUE

You can drop any type of 3 STEP CrystaLac or ONE STEP CrystaLac into this non-cleansing, soak off WaterPro CrystaLac and with a brush (0 Short or 0 Long) or with a nail art needle you can create different designs. **Before using the new WaterPro CrystaLac Clear, you have to apply a base color.**

WaterPro CrystaLac can be used 2 different ways:

3 STEP CrystaLac system:

Prepare the natural nails according to the 3 Step gel polishing method. Apply the base gel and cure it. Apply one layer of WaterPro CrystaLac and cure that layer too. Apply another layer of WaterPro CrystaLac and drop your 3 STEP CrystaLac (3S or GL) color into the wet Waterpro CrystaLac according to your design and cure it. Finally cover it with a top gel.

ONE STEP CrystaLac system:

Prepare the natural nails according to the One Step gel polishing method. Apply one layer of WaterPro CrystaLac and cure it. Apply another layer of WaterPro CrystaLac and drop your One STEP CrystaLac (1S or OS) color into the wet Waterpro CrystaLac according to your design and cure it. Apply a top gel (optional).

4ml –



Clear

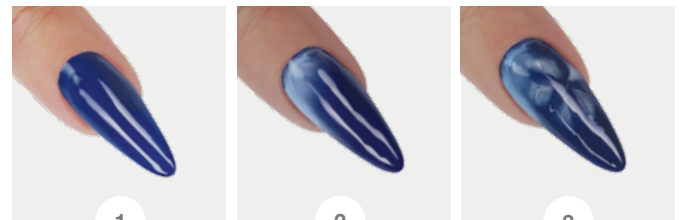


Scan the QR code with your mobile then check the video about WaterPro Crystalac!

WATERPRO CRYSTALAC CLEAR

STEP BY STEP

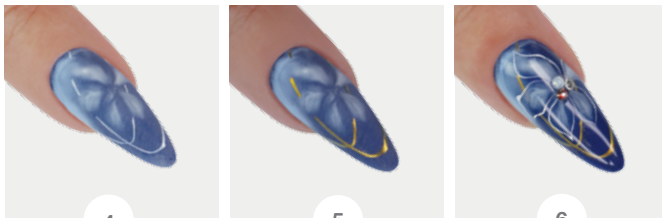
BY MÓNIKA SZABÓ



1 Create the base color with R110 Royal Gel. Cure it in the UV lamp for 2 mins.

2 Thinly apply the Clear WaterPro CrystaLac. Do not cure it. Apply 3S34 CrystaLac with a 0 Long brush around the cuticle area, let the material spread, while creating the color gradient. Cure it in the UV lamp for 2 mins.

3 Thinly apply another layer of Clear WaterPro CrystaLac. Create the petals of the flower with 3S27 3 STEP CrystaLac and 0 Short brush. Let the CrystaLac spread. Cure it in the UV lamp for 2 mins.



Cover the nails with Cool Top Gel, then refine the surface. Paint thin lines with R6 Royal Gel. Cure it in the UV lamp for 10 seconds.

Rub Tiger Eye ChroMirror chrome pigment powder to the surface, then cover it with Cool Top Gel. Cure it in the UV lamp for 2 mins.

Contour the flower with White Art Gel, place stones into the center. Cure it in the UV lamp for 2 mins.

WATERPRO CRYSTALAC CLEAR

LAYER ORDER



Super Shine Optic or 0/clear ONE STEP CrystaLac or Cool Top Gel



Drop into ONE STEP colors (1S or OS) or 3 STEP CrystaLac colors (3S or GL)



WaterPro CrystaLac Clear



Any ONE STEP CrystaLac colors (1S or OS) or 3 STEP CrystaLac colors (3S or GL)



Any ONE STEP CrystaLac colors (1S or OS) or 3 STEP CrystaLac colors (3S or GL)

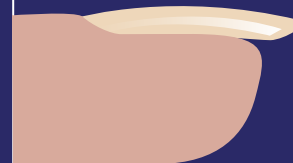
OPTIONAL ▶



Easy Off Hardener Gel (nail strengthening)



Base Gel (in case of 3 STEP or GL) nail strengthening



Natural nail

Important!

For CrystaLac only use strong UV bulbs! Check the lamp in every 2-3 months (eg.: Does the Super Shine Optic cure totallydry in 2 minutes?!) If the bulbs are weak, the material does not cure totally, and it can come off. If you applied it thickly it might get wrinkled.

NEW!

NEW! ONE STEP CRYSTALAC TREND COLORS 2017/2018 WINTER

VIVID COLORS IN A MATTER OF SECONDS

There is no better program in the winter season than sitting in front of the fireplace with a mug of hot chocolate. For the romantic dates the perfect choice is the NEW 1S55 Strawberry Champagne and the NEW 1S56 Chocolate soufflé. For those clients who desire something darker, we suggest the NEW 1S57 Night Blizzard colors.

4ml –
8ml –



1S55
Strawberry
champagne

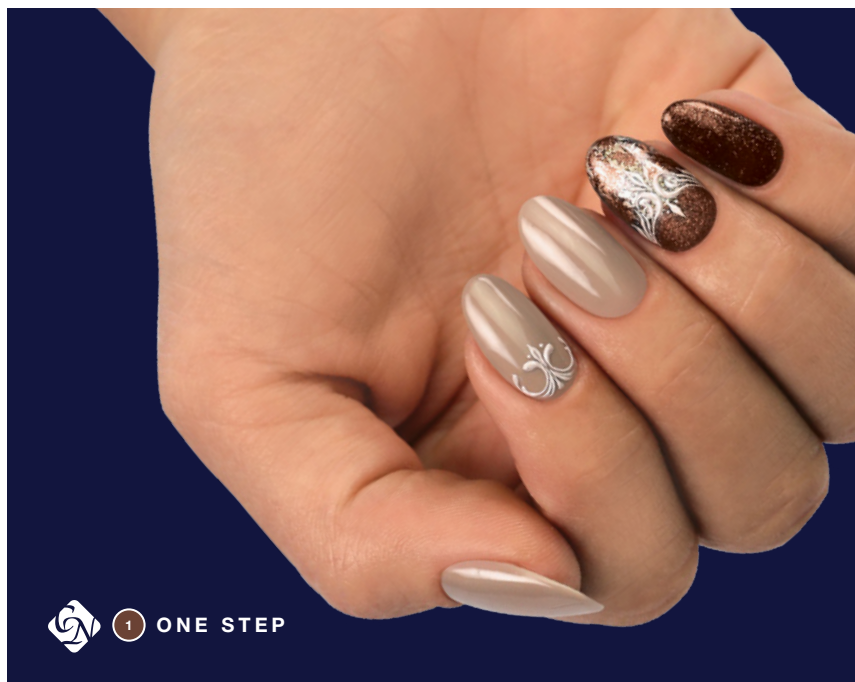
1S56
Chocolate Soufflé

1S57
Night blizzard

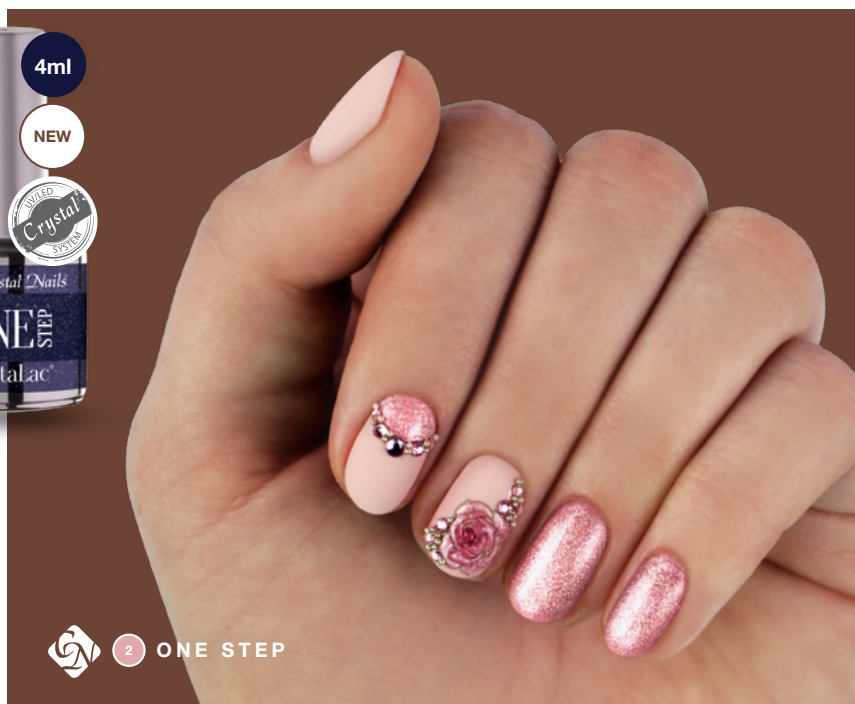
ONE STEP! NO NEED FOR BASE AND TOP LAYER!

NO NEED FOR CLEANSING

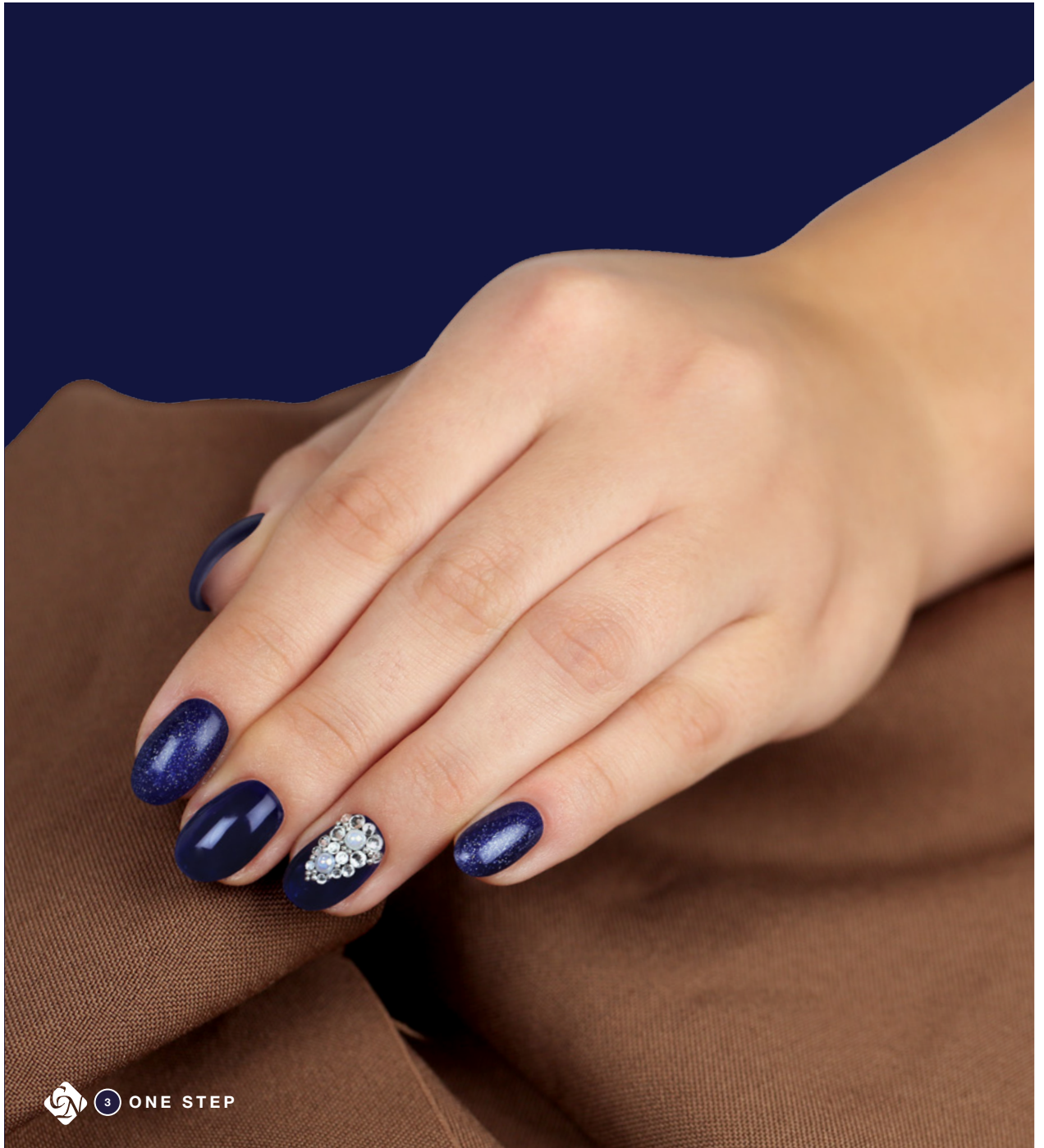
BETTER SOLUBILITY



 1 ONE STEP



 2 ONE STEP



 3 ONE STEP

BASE GELS

UNIVERSAL BASE GELS



COVER LIGHTPINK BASE GEL

Colored base gel in paler
pink shade

Unique developed, colored, flexible, easy to soak off, paler pink shade version of Cover Pink Base Gel. Like Cover Pink Base Gel, it's extremely easy to handle, it can be spread easily on the nail surface. In paler pink shade, less pigmented than Cover Pink Base Gel.



COVER PINK BASE GEL

Colored base gel

Unique development! Colored, flexible, soak off base gel with good adhesion. Its color is identical with the most popular Cover Pink color. It is extremely easy to handle, it can be spread easily on the nail surface. A slightly sticky layer remains on the surface. Easy to soak off, the soak off time of a nail created with this: approx. 8 mins.

Cure time in the UV lamp:
2-3 mins, in LED: 1-2 mins.

4ml

8ml

-

Cure time in the UV lamp:
2-3 mins, in LED: 1-2 mins.

4ml

8ml

-

3 STEP CRYSTALAC BASE GELS



BASE GEL

The base gel that is flexible, soak off, provides an extreme adhesion for 3 STEP Crystalacs. Use it in a thin layer for the perfect adhesion and better soak off effect.

Cure time in the UV lamp:
2-3 mins, in LED: 1-2 mins.

4ml

8ml

15ml



COLOR UP! BASE GEL

„COLOR TUNING” UNDER 3 STEP CRYSTALAC!

Softer, white, flexible, strong adhesion base gel, especially under 3 STEP Crystalac gel polish. Soaks off perfectly. Easy to handle. Use it thinly, in one layer. It easy to apply with the soft brush. If applied under the STEP Crystalac it, gives extra vivacity to the applied colors.

Cure time in the UV lamp:
2-3 mins, in LED: 1-2 mins.

4ml

8ml

-



BUILDER BASE GEL

THE STRONGEST ADHESION CN BASE GEL

Incredible strength of adhesion, new development: say goodbye to adhesion problems even in case of the most problematic clients. Easy to apply, a bit more dense, the shorter brush makes your work more even. Apply under Crystalac, but in this case the solubility will decrease, because of the stronger adhesion.

Cure time in the UV lamp:
2-3 mins, in LED: 1-2 mins.

4ml

-

15ml

TOP GELS

UNIVERSAL TOP GELS



MATTEVER MATTE TOP GEL

Non-cleansing, soak off matte top gel

With this non-cleansing, soak off, flexible matte top gel you will be able to obtain a longer lasting matte effect than ever before. You can use it over gel polishes, hard gels and acrylic as well. Its non-cleansing property offers a new way to decorate/design with it. Cure it nail by nail

Cure time in the UV lamp:
2-3 mins, in LED: 1-2 mins.

4ml

8ml

-



COOL TOP GEL

Cleansing-free, soak-off super shine

Cleansing-free, soak-off, medium viscosity, transparent top coat that keeps its spectacular shine for weeks.

Non-yellowing. Does not require cleansing after curing. Perfect for acrylic and gel nails and 3 Step and One Step CrystalLacs, as it does not give a blueish-purplish tint to darker shades.

Cure time in the UV lamp:
2-3 mins, in LED: 1-2 mins.

4ml

8ml

-

ONE STEP CRYSTALAC TOP LAYERS



SUPER SHINE OPTIC

NO CLEANSING, SOAK OFF SUPER SHINE

No cleansing, flexible, soak off, clear shine gel with a brush. It has been developed to increase the durability and shine of the ONE STEP CrystalLacs. It has optical brightening effect, so it brightens the white and light colors, makes the darker colors more vivid.

Cure time in the UV lamp:
2-3 mins, in LED: 1-2 mins.

4ml

8ml

15ml



0/clear ONE STEP CrystalLac

DURABLE, FLEXIBLE, SOAK OFF, CLEANSING FREE SHINE FOR CRYSTALAC!

You can add an even more durable cover shine on your ONE STEP CrystalLacs. It protects the fragile natural nails like a transparent, shiny shield for 2-3 weeks. You do not even have to buff thanks to its strong adhesion ability (We recommend the New Soft Touch Buffer, it will not weaken the natural nail.

Cure time in the UV lamp:
2-3 mins, in LED: 1-2 mins.

3ml

8ml

-

3 STEP CRYSTALAC TOP LAYERS



CLEAR/TOP 0 CRYSTALAC

Sealing layer for 3 STEP CrystalLacs, soak-off, flexible, durable and super shiny!

They give a long lasting shine for the CrystalLacs. Apply thinly in order to reach better solubility!

CN tip:
Do not overcure the 3 STEP CrystalLac, so the top can adhere perfectly!

Cure time in the UV lamp:
2-3 mins, in LED: 1-2 mins.

4ml

8ml

15ml

NEW

CAMEA

NEW! CAMEA GEL JEWEL GELS

NO CLEANSING, TRANSPARENT, GLITTERY, VERY DENSE NAIL ART GELS.

Mainly for the creation of gemstones. Can be combined with the color base stickers. Apply them with the nail art needle. If you place any type of nail art element (glass foil, ChroMirror powder, Flakes, etc.) underneath it (to the place of application), you can get a more unique effect. Looks amazing on matter surfaces.

Cure time in UV lamp 2-3 mins, in LED approx. 1 min, applied in a thicker layer: 1,5 mins.

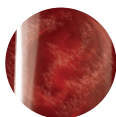
3ml –



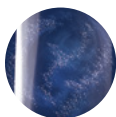
Four beautiful bright colors:



Nacre



Claret



Blue



Black

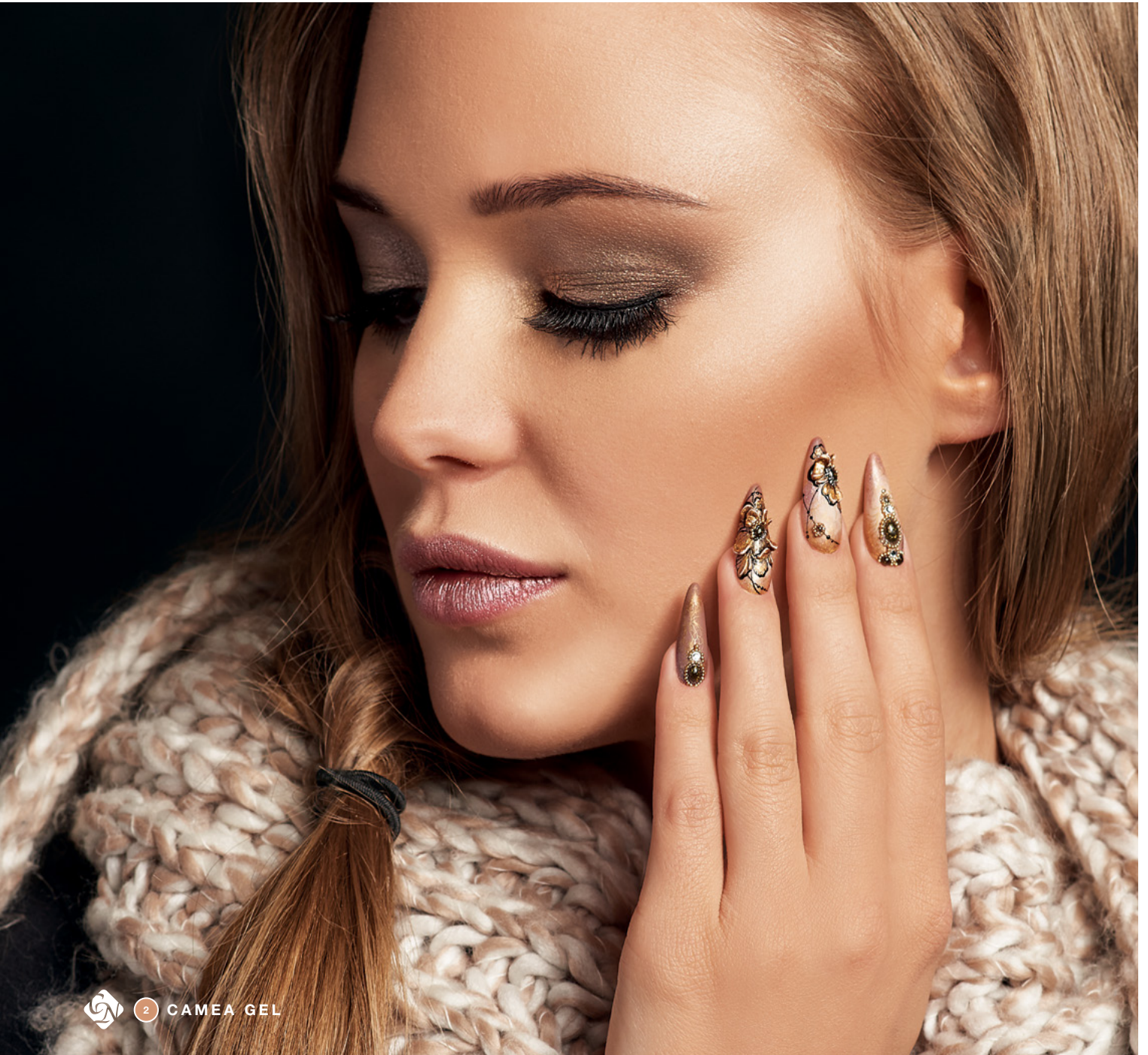
GEMSTONES CAN BE EASILY AND BEAUTIFULLY CREATED WITH IT, BUT ALSO PERFECT FOR FILLING THE COLOR BASE STICKERS.

CN TIP:

LOOK AMAZING ON MATTE SURFACES – THE CONTRAST IS GREATER.



1 CAMEA GEL



2 CAMEA GEL

2

New R114 Royal Gel-lal, anal art NEW 4 black Camea Gel , NEW 12-and 15 RoyalCream Gel and the new Chrome Gold Stamping Lacquer (Magyarosi Barbara)

NEW!

NEW! ROYALCREAM GEL

NON-CLEANSING, HIGHLY PIGMENTED

PASTA GELS

Non-cleansing, highly pigmented color gels that are combining the thickness of Art Gels and the easy handling of Royal Gels. Does not run and has a pastelike consistency, providing a 3D effect for the designs that you create. Cures well even if applied in a thicker layer. The colors can be mixed perfectly such as the Art Gel painting gels.

New RoyalCream gels with the known properties, in metal colors, perfect for baroque style nail art.

Cure time in UV: 2-3 mins, in LED: ca.1 min, in thicker layers: ca.1,5 min

3ml –



 1 ROYALCREAM GEL

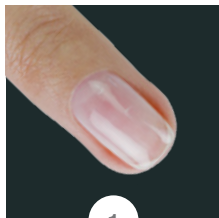
THE NEW FAV NAIL ART GELS OF BARBARA MAGYAROSI
NAIL ART INTERNATIONAL CHAMPION EDUCATOR!

CN TIP:
**USE THEM TO FILL IN THE OUTLINE OF THE
COLORING STICKERS!**



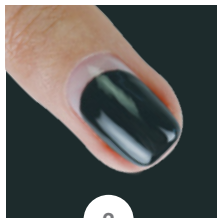
ROYAL CREAM GEL STEP BY STEP

BY EDINA SIKARI



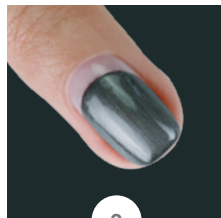
1

Prepare the nails: push back the cuticles, remove the excess skin, shape and file the nails. Sanitize and degrease the surface with Spray Prep. Apply on layer of Builder Base Gel. Cure it for 30 secs in the UV lamp.



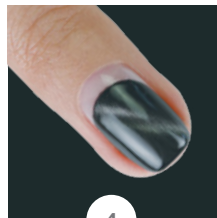
2

Apply the first layer of 3S12 3 STEP CrystaLac. Cure it for 30 secs in the UV lamp After applying the second layer, cure the nails for 2 mins in the UV lamp.



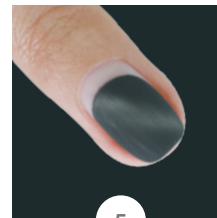
3

Apply one layer of Tig25 TigerEye CrystaLac. Magnetize the uncured layer with TigerEye magnet – for 5-8 secs. . Cure the nails for 2 mins in the UV lamp.



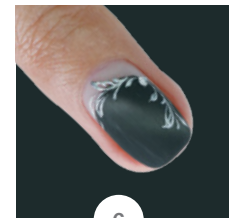
4

Cover it with MattEver Matt Top Gel. Cure the nails for 2 mins in the UV lamp.



5

Decorate the nail with the new 13 RoyalCream Gel pasta gel and 0 Short brush. Cure the nails for 3 mins in the UV lamp.



6

Stick Swarovski stones with Brush Tip glue. then nourish the cuticle area with Cuticle oil.

NEW

NEW! ROYAL GEL TREND COLORS 2017/2018 WINTER

NON-CLEANSING COLOR GELS IN A SINGLE COAT

It is not a coincidence that the Royal Gels are surrounded by adoration every season. As not only it is easy to work with them, but they are super durable and cover perfectly in one layer.

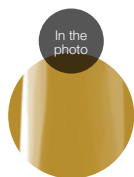
The NEW R111 Indian curry and the NEW R114 Peruvian fly us to far-away lands. The lovers of the piquant flavors, we suggest the NEW R113 Guacamole, for the sweet-toothed the NEW R112 Honey Pumpkin or the NEW R115 Black Forest cake.

4,5ml –

Try the new colors in 3ml version too!

Attention! Limited edition!

3ml –



R111
Indian
curry



R112
Honey
pumpkin



R113
Guacamole



R114
Peruvian
pecan



R115
Black Forest
Cake



 1 ROYAL GEL

NO CLEANSING COLOR GELS
IN ONE LAYER
ROYALGEL




BEST TREND WINTER 2017-2018

BE FOREHANDED AND GET THE MOST POPULAR WINTER TREND COLORS!

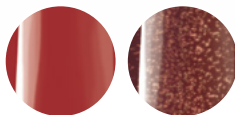
1

BEST TREND COLORS WINTER 2017-2018 ONE STEP CRYSTALAC KIT

The kit contains:
1S5, OS79, 1S55, 1S56

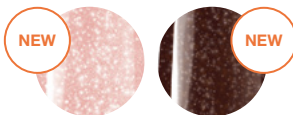


4x4ml



1S5

OS79



NEW!
1S55

NEW!
1S56

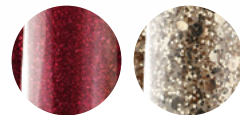
2

BEST TREND COLORS WINTER 2017-2018 3 STEP CRYSTALAC KIT

The kit contains:
3S49, 3S52, 3S72, 3S73

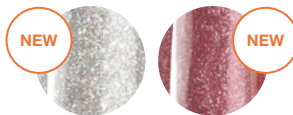


4x4ml



3S49

3S52



NEW!
3S72

NEW!
3S73

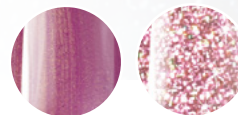
3

BEST TREND COLORS WINTER 2017-2018 COLOR GEL KIT

The kit contains:
310, 553, 627, FD12



4x5ml



310

553



NEW!
627

NEW!
FD12

4

BEST TREND COLORS WINTER 2017-2018 ROYAL GEL KIT

The kit contains:
R21, R88, R114, R115

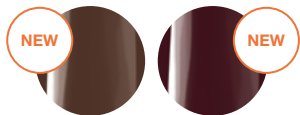


4x4,5ml



R21

R88



NEW!
R114

NEW!
R115



1

2

3

4

NEW

NEW

NEW! COLOR POWDER TREND COLORS 2017/2018 WIN- TER

AMAZING COLOR BRIGHTNESS AND COVERAGE

This year we dedicate the winter color powder colors to the real princesses. The NEW 169 shade for the real Ice Queens, the NEW 170 Rosy Mood for the “Sleeping Beauties”, the NEW 171 Pink Parade is perfect for “Cinderellas”, while the NEW 172 Majestic Rosegold for “Snow Whites”.

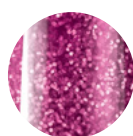
3,5g (5ml) –
7g (10ml) –



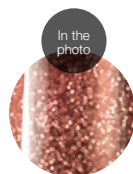
169
Ice Queen



170
Rosy mood



171
Pink parade



172
Majestic rosegold



AMAZING COLOR BRIGHTNESS AND COVERAGE

FINE GRINDING, STRONG PIGMENTATION, OPTI-
MAL CURE TIME



 1 COLOR POWDER



 2 COLOR POWDER



NEW! STAMPING LACQUER

Quick drying nail polishes especially developed for nail stamping that cover perfectly. Denser, more pigmented polishes developed for the application of the nail stamping - with them even the smallest design can be applied, as it perfectly fills in the engraved design of the stamping plate .

4ml –

CN TIP:
THE NAIL STAMPING TECHNIQUE WORKS
PERFECTLY WITH ART GEL
PAINT GELS

Fabulous decorations
in no time, easily !



Chrome
Gold

Chrome
Silver

NEW! PHANTOM BRUSH

Gel nail art brush with natural hair. Therefore, it can be used for gel, acryl, aquarelle painting as well. Perfect for creating the color mash, because of its size and softness. Slightly bulkier than CN Art Design brush.



NEW! DROP FILE

For smile line filing. 100/150



NEW! CN CARBIDE DRILL BIT- BEVELED CYLINDER

Carbide bit - with a unique cylinder shape, but with a beveled edge. You can remove the material faster, and from a bigger surface. Does not heat up. Remover bit for the removal of the products. Very effective. Halves the worktime.

The new favorite of Szilvia Balázsi - for the removal of gel polish!





NEW! GLITTER POWDER

Glitter powder with the smallest grains, in festive colors. Must have for winter Sugar-effect nail art designs.

Available in 4 colors: gold, silver, red, claret.



NEW! PLATINUM FOIL

Smaller pigment wafers. Pushed into sticky surfaces, you can get foil effect. Rubbed into non-cleansing surfaces, you will get a silver or gold ChroMirror effect.

Available in gold and silver colors.



NEW! CRYSTAL NAILS CHROMIRROR CHROME PIGMENT POWDER

ChroMirror Tiger Eye Gold and Tiger Eye Green:

It works as TigerEye - mixed with a few drops clear shine gel. You can magnetize it before curing. But it won't have the usual TigerEye result, but a sparkling, multidimensional, chameleon rainbow effect. Can be used any gel polish colors. If you rub it into a non-cleansing surface, as a ChroMirror powder, you will get the most homogenous chrome gold surface ever.

Tiger Eye Gold, Tiger Eye Green --

ChroMirror Rosegold:

Amazing shell effect with rosegold sparkling! Easy to use: apply it onto a non-cleansing surface: - Royal Gel, ONE STEP CrystaLac, 0/clear ONE STEP CrystaLac, Super Shine Optic, Xtreme Top Shine and Cool Top Gel - cure it for approx. 80% - (until it is not sticky anymore but not fully cured yet) rub the powder into this surface. Apply Acid Free Primer to the nail surface or the edges and cover it with 2 layers of top gel.

Rosegold -



CN tip: Apply Acid Free Primer to the surface of the ChroMirror chrome pigment powders, to get perfect adhesion. Cover it with 2 layers of shine gel!





NEW! HOLO STICKER STRIPES

Foil stripes with different thickness, for nail art purposes. Extra thin: 0,04 mm. Size: 9x12cm
In 2 holo colors: gold and silver.



NEW! FULL STICKER - 10 TYPES

Gorgeous stickers which you can use on the whole nail surface. For the sake of lasting durability, apply Acid-Free Primer to the nail surface. Carefully place the nail decal on your nail. File off the overhanging edges and apply another layer of Acid-Free Primer. Finally, cover it with two layers of top gel. These new stickers harmonize in color with the new 3 STEP CrystalLac colors and can be combined with the new RoyalCream Gels as well.

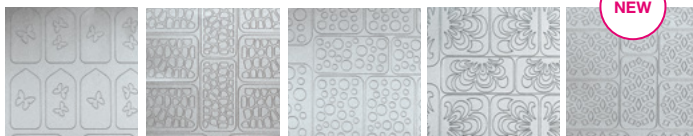


Quick and spectacular decoration in few minutes.

For the sake of lasting durability, apply Acid-Free Primer to the nail surface. Carefully place the nail decal on your nail. File off the overhanging edges and apply another layer of Acid-Free Primer. Finally, cover it with two layers of top gel.

NEW! OMBRE STICK TEMPLATE

Size: 7x6,5 cm. Single-use stencils. Use the Ombre Stick if you want to create the color mash with our denser materials. With the ChroMirror chrome pigment powders create decorative nail art designs, or use the denser CrystalLac gel polishes in one thin layer.



T1

T2

T3

T4

T5

LIMITED! NEW! CUTICLE OILS, 2 WINTER SCENTS

Limited Christmas edition. Perfect gift idea for clients. Orange and apple-cinnamon scents.

4ml -



NEW! FAN TIP DISPLAY, 120 PCS, NATURAL AND CLEAR

Storage: 120 tips.
Natural and Clear -





NEW

LIMITED WINTER EDITION! NEW! OMBRE BOX

WITH THE USE OF THE TOOLS IN THE BOX, YOU CAN CREATE UNIQUE COLOR AND PATTERN COMBINATION

With the use of the tools in the box, you can create unique color and pattern combination. Only your fantasy is the limit. Use Cover Pink Base Gel as a babyboomer and/or ombre base, or use it as a base gel. Create nice color gradients or 3D patterns with Royal Cream gels. With MattEver top gel, give extra matte base for the patterns created with Ombre stick templates.

The kit contains:

- 1 pc Cover Pink Base Gel 4ml
- 1 pc MattEver gel 4ml
- 1pc T02 NEW Stick Template
- 1pc T04 NEW Stick Template
- 1pc T05 NEW Stick Template
- 1 pc Ombre stick set
- 1 pc Royal Cream 1 (white) 3ml
- 1 pc Royal Cream 14 (dark silver) 3ml
- 1 pc Royal Cream 15 (rose metal) 3ml



LIMITED WINTER EDITION



1 NEW! ROCKY COVER LIGHTGEL BUILDER GEL KIT

Test our new builder gel trial kits. You can find every product what is essential to sculpt a professional set of nails, from the base till the top. The kit contains: Rocky Cover Light Gel 5ml, Titanium Gel 5ml, Builder White II. Renewed 5ml, Xtreme Top Shine 4ml, 10pcs Cleanser Pad, 10 pcs CN butterfly form.

2 NEW! COVER REFILL BUILDER GEL KIT

Test our new builder gel trial kits. You can find every product what is essential to sculpt a professional set of nails, from the base till the top. The kit contains: Cover Refill 5ml, Cover Refill Hard Tan 5ml, Cover Refill Hard Crystal 5ml, Builder Base Gel 4ml, Xtreme Top Shine 4ml, 10pcs Cleanser Pad, 10pcs CN butterfly form, R6 Royal Gel 3ml.



3 NEW! CRYSTAL NAILS ADVENT CALENDAR - FOR NAIL TECHS

Why is it a nail tech calendar? There are no chocolate behind the small windows, but something else....Prepare for Christmas with Crystal Nails!

4 NEW! CRYSTAL NAILS CHRISTMAS FILE 2017

Surprise your clients with the new Norwegian patterned 150/180 grit file, which is a unique present for Christmas.

