



sens

by  Crystal Nails®



sens

by
Crystal
Nails®



sens by Crystal Nails®

the SENSE of Nail Art

This brand has been waited for a long time now, everyone has to try it who wants to try themselves in the special world of the materials of nail art to express themselves. The brand of Sens reassure the same quality and reliability what we have had with the „parent brand”, the Crystal Nails, but it has new ways and possibilities of the usage of products.

You can find strengthened base gel („liquid builder gel”) with silk strands in it, thick but flexible 3D decoration gels with matching brushes and last but not least very pigmented CrystaLacs (gel polishes for decoration). We present to you a very special, homogenous acrylgel (polygel) for sculpting and many more unique material and tool. An interesting fact about the Sens is the developing process includes Barbara Újvári, the ambassador of the Sens, besides the experienced developing team of Crystal Nails. Barbara and her breathtaking work are known for many all around the word. Her special abilities of education has been acknowledged in America, Asia and Europe. You can find her introduction and an interview with her in page 16.

WE WISH YOU SO MUCH SUCCESS FOR YOUR WORK WITH SENS!



ÚJVÁRI BARBARA

SENS Ambassador



JÁKOB ZOLTÁN

CEO of Crystal Nails

base & top

SENS BASE GEL

Base gel developed for especially for strengthening technique. "Liquid-like builder gel"

Base and strengthening gel with extra cohesion.

This is the strongest known Base Gel on the market right now, specially developed for strengthening technique. Due to its special component, it is unique among base gels. It has tiny little artificial silk strands in it, making the product thicker and more flexible. Beyond that; this new technique can help with the preparation of the surface and C-curve, due to its consistency, it will not flow over the lateral nail fold or near the cuticle. It can also help with the cohesion too speeding up the process. The product contains vitamin 'E' and calcium. The order of base gels by cohesion: Sens Base Gel, Compact base Gels, Builder Base Gel, Universal Base Gel, (Easy Off Hardener Gel). This product will not get hot during the curing, remains flexible and it will not break. You can use it both in LED and UV Lamps.

4ml



SENS TOP GEL

Long lasting and non-cleansing top gel for preserving the original shade of colors.

Long-lasting, non-cleansing, bright and shiny top gel. The unique feature of this product is the lack of the material what makes the colours more vivid, thus preserving the true shades of the colours. The consistency is medium, it won't flow easily so you can work in a bit thicker layer with it in order to get a smoother surface.

4ml



SENS '3G POLISH' CLEAR 0

Multifunctional help to gel polish.

This is a thicker kind of cleansing top gel, which helps you with your nail art and decoration. It can be used to attenuate or to weaken the (vivid) colours. when you're doing decorations with gel polish because of the cohesive layer after curing. Due to the thickness, it can also be used for making in-build decorations.

4ml



o gel



Sens
by
Crystal
Nails

This nail was made with Sens S004, S007 '3G Polish Gellac' and the Sens Top Gel by Barbara Újvári.

3G polish

SENS '3G POLISH'

Highly pigmented nail art gel polishes

These are thick and highly pigmented gel polishes. These 3 step CrystalLacs can cover the surface in just one thin layer. Made especially for gel polish decoration techniques. This product line has 10 starting colours which you can mix with each other, so you can create the required shades for any nail art and patterns. If you would like to weaken the colours or make them less vivid, we recommend you the Sens by Crystal Nails Gel Polish CLEAR 0. You can use it on the whole surface, but not the usual way as we use gel polishes: you have to get a small amount of material on the brush and push the brush a bit harder while you apply it on the surface. Use it in a thin layer and use a strong LED lamp for curing. Make sure, you cure them a little longer than the usual 3 Step CrystalLacs (especially the S007 Black).



4ml



S001

S002

S003

S004

S005

S006

S007

S008

S009

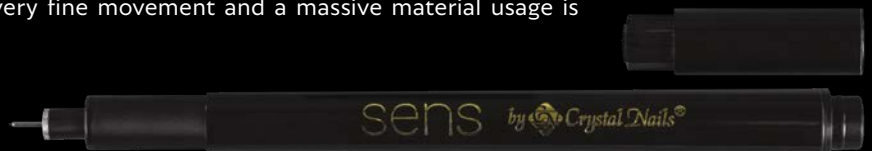
S010

SENS NAIL ART PEN

Nail art needle pen for sharp lines and unique designs

This product is 0,03mm thin, black nail art needle pen which can help you prepare the patterns you want to draw on the nail as a decoration; or it can make the already decorated nail surface more unique. This product is a big help for anyone who has difficulties drawing with gel polish, working with this could make the decoration process stress-free because drawing is always easier than painting. This pen provides you the possibility of the constant line, so it would be gap free and the line wouldn't break at any point. This product can make the whole decoration process fun and joyful.

Recommended usage: On the top of the fully cured top gel, matte the surface with a #180 file. We don't recommend to use this after a Matte Top Gel, but if you insist to use it anyway, the best you can do is work with a very fine movement and a massive material usage is





SENS

by
Crystal
Nails

SENS '3G POLISH' STEP BY STEP



Patterns and flowers using Gel Polish Decoration technique.
(by Barbara Újvári)



This nail was made with Sens Base Gel, Sens S008 '3C Polish' and the Sens Top Gel by Barbara Újvári.

Sens
by
Crystal
Nails

acrylgel

SENS ACRYLGEL

The homogenous polygel which combines the best qualities of acrygels.

This is the upgraded version of acrylgel polygels. The consistency is homogeneous and it has excellent coverage. After curing, it is an almost dry surface. Thicker than the others, so they keep the shape better but require a stronger brush to work with. For starters we have clear, cover pink, and white colours. They won't burn during curing. For creating the white part of the french nail, we recommend to make a clear base foundation level. We recommend to use AcrylGel Assistant for this product. Cure time: 2-3 min (UV), 1-2 min (LED)

30 ml



CLEAR

Look at the picture

COVER PINK

Look at the picture

WHITE

Look at the picture



SENS ACRYLGEL ASSISTANT


Gentle to the brush, easy to work with


Special shaping liquid for our AcrylGel. With the help of this product, you can work without the brush drying out. A small amount of this liquid is enough for stopping the AcrylGel to stick to the brush. It has a nice, tutti-frutti scent.

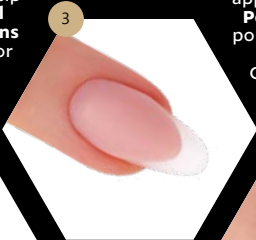
50 ml





SENS ACRYLGEL STEP BY STEP


- 

Prepare the nail: after the manicure, make the free edge short enough. Make the surface matte and put on the form.
- 

Apply a less amount of **Sens AcrylGel Clear** on the nail. Create a thin base layer with the help of the **Sens AcrylGel Assistant** and the **Sens 3D L Brush**. Cure it for 1-2 min in LED lamp.
- 

Create the nail bed with **Sens AcrylGel Cover Pink**, the **Sens AcrylGel Assistant** and the **Sens 3D L Brush**. Cure it for 1-2 min in LED lamp, cleans it, and file the smile line. Remove the form.
- 

After removing the dust, apply a layer of **Sens 3G Polish S001** white gel polish in order to create a higher contrast. Cure it for 1-2 min in LED lamp.
- 

Create the free edge with the **Sens AcrylGel White** with the help of **Sens AcrylGel Assistant** and the **Sens 3D L Brush**. Cure it for 1-2 min in LED lamp. Cleans the nail and shape it with file.
- 

Cover it with **Sens Top Gel** and cure it for 2-3 min in LED lamp.



This nail was made with the Sens Acryl Gel Clear, Cover Pink and White; the Sens AcryGel Assistant, Sens S001 '3G Polish' and the Sens Top Gel by Barbara Újvári.

Sens
by
Crystal
Nails

plasty gel

SENS PLASTY GEL

This playful nail art gel could get the fantasy alive.

This is an extremely thick; plasticine consistency nail art decoration gel. We recommend to use a spatula to get the material out of the jar. Use 3D brush and cleanser for the working process. Non-cleansing product, it doesn't require any top gel, you can use above it. For the preparation, we recommend you to use your fingers and hands (if you're allergic, use gloves), you can also use the SENS by Crystal Nails Natural 3D brushes.

It has 4 sparkling shades, which can make any nail look luxurious.

Recommended cure time: 1-2 min (LED), 2-3 min



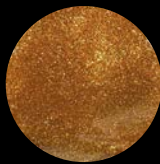
5ml



PLASTY GEL
OPAL GOLD



PLASTY GEL
OPAL BLUE



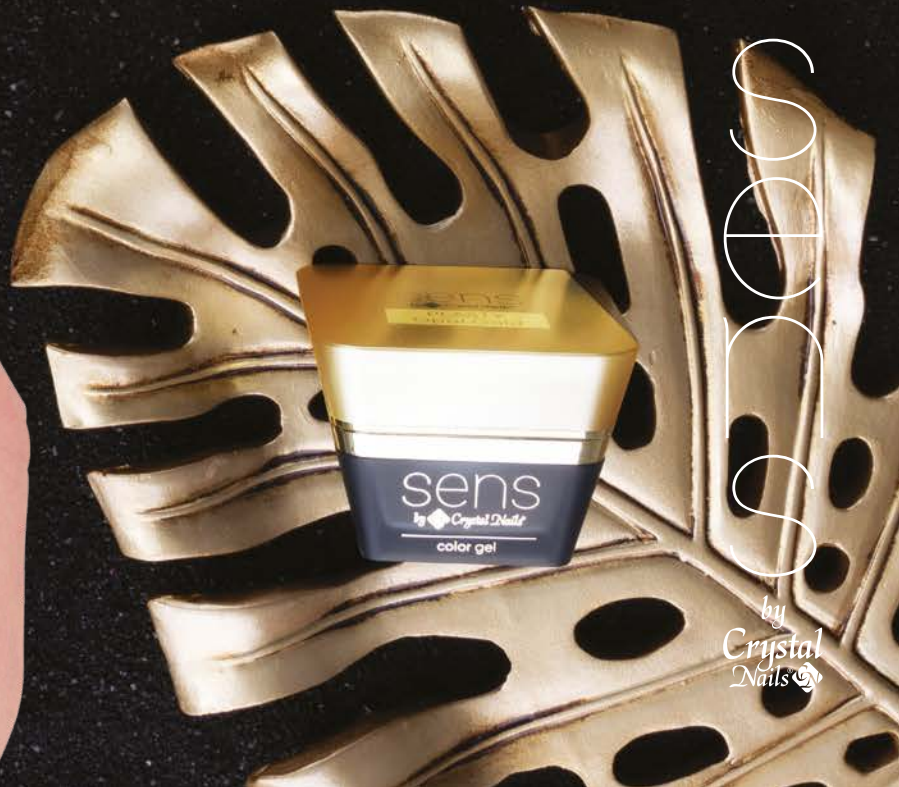
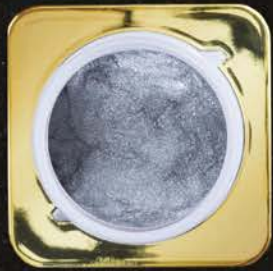
PLASTY GEL
ANTIQUÉ GOLD
Look at the picture!



PLASTY GEL
SILVER

SENS PLASTY GEL STEP BY STEP

- Apply any '3G Polish' shade you want, cover it with **Sens Top Gel**.
- Use a fine buffer for matting the surface.
- Create the pattern with the **Sens Top Gel** and apply the **Chromirror powder** into the pattern. Cover the pattern with **Sens Top Gel**.
- With the help of a spatula, apply the **Plasty Gel Antique Gold** on the pattern what you've created.
- Shaping the pattern with **Sens 3D Brush**, smooth the surface and cure it.
- Cover the pattern made with **Plasty Gel** with **Sens Top Gel**, and use other decoration product to make it more fabulous.



S
E
N
S
by
Crystal
Nails

This nail was made with Sens S005 '3G Polish', Sens Top Gel and Sens Plasty Gel Anitque Gold by Barbara Újvári.

brush

SENS SYNTHETIC ROUND BRUSH

Effective and multifunctional tool for creating nails with gel.

Brush for gel sculpting with artificial hair, with a softer and longer design. This ensures a smoother application on the surface of the nail. The round edges help to work the gels around the cuticle in order to create the smile line. You can also use it for the precise painting of the gel polish or covering the whole nail surface.



This nail was made with the Sens AcryGel Cover Pink, the Sense S007 '3G Polish', the Staming Gel Black, the Acrylic Color Powder 548 and Swarovski rhinestones by Barbara Újvári.

SENS NATURAL 3D PRODUCT-LINE

Brushes for using the unlimited potential Plasty Gel.

Specially developed for the Plasty Gel in 4 different sizes and natural hair in it. The body of the hair on the brush is wide but the end of it is pointy and slim. This design makes it easier to sharp shape creations. For the optimal usage it is recommended to use a little amount of cleanser (non-coloring, non-scented)

3D XS/S sizes:

These are best for creating small patterns. It provide us the opportunity to be more creative and artistic. You can use for gel polish decorations (e.g. flowers, leaves).

3D M size:

Less amount of materials. Due to the size of the hair of the brush, it makes us easier to work with it more precisely. Not so flexible, so it's possible to put pressure on it.

3D L size:

Recommended for bigger amount of materials and for creating bigger patterns. Due to its flexibility, it is good for filling the acrylic nails as well.

SENS
by
Crystal
Nails

XS



S



M



L



INTERVIEW WITH
BARBARA ÚJVÁRI
INTERNATIONAL NAIL ART EDUCATOR,
AMBASSADOR AND DEVELOPER OF
SENS BY CRYSTAL NAILS



BARBARA, WHAT WAS THE CORE EVENT OF YOUR SUCCESS STORY?

My passions are creating and the world of nails. I started my career in 2004: it was the year of my first course in the nail business. After the exams, I started to practise as much as I could and I was constantly searching opportunities for developing myself professionally. That's how I found Crystal Nails: I knew the quality of Crystal Nails already, so I knew I could expect the best from them.

I was in some short course of Crystal Nails and one of my educators found my decorated tips (like what you can see the other page - the Editor). They introduced me to Zoltán Jákob and he invited me to perform in the next Nail Camp. From that moment, being an educator was my life and creating was my love. I knew I found my way.

WELL, IF YOU WERE DISCOVERED AS A STUDENT, THAT IS HALFWAY TO SUCCESS. HOW DID YOU MANAGE TO CONQUER THE INDUSTRY?

First, the education in Hungary were launched, and became famous among the nail techs and later I was lucky and got invited many places abroad: South-America, USA and Asia. While I was travelling, I was faithful to Crystal Nails, because I haven't found any better than this on the market.

Creating and educating is not just a job for me, it's passion and hobby, I cannot live without it. I am motivated to create new patterns and decorations, to try new techniques. My faithful companions are the products of Crystal Nails. I am searching for new ideas and inspirations in every single thing, every day. Many times I find it on the most unexpected places. The most beautiful part of the process of creation is the planning and experimenting when all of the things that I've creating in my head, became real.

HOW CAN ONE BECOME A BRAND AMBASSADOR FROM A HIGHLY RECOMMENDED EDUCATOR?

Recently, Zoltán Jákob and I starting working on a very exciting project where we can merge the passion for the nail tech industry and the highest quality. While we were developing the Sens products, I prioritize my knowledge and experiences to create such products co-operating with the Crystal Nails, what could make the creation process more joyful. My biggest professional achievement is when I saw my students to fall in love with the industry as well as I did.

BARBARA, YOU ARE ALWAYS SO PASSIONATE ABOUT YOUR JOB, HOW COULD YOU SUM UP THIS AND WHAT IS THE BEAUTY OF THE BUSINESS FOR YOU?

For me, being a nail tech is a passion. It inspires me, filling me up, completes me and encourages me to learn more and more. This industry is a form of art: we are artists as nail techs. We deserve to get the best materials considering the work and education as well.

THE INTORDUCTIONAL WORK OF BARBARA ÚJVÁRI.



sens
by  Crystal Nails®