

Group X20

Motorhome 4 persons

**BÍLALEIGA
AKUREYRAR**
Höldur

Europcar



Table and chair
camping set included.



Pictures are model example only
Vehicle Make and Model may vary within group

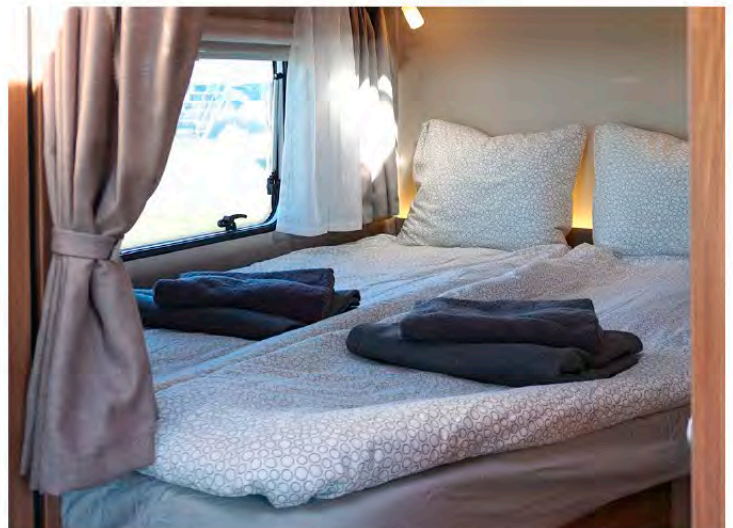
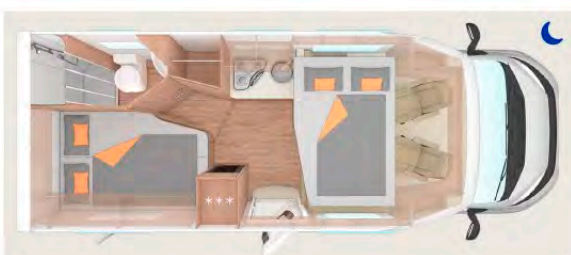
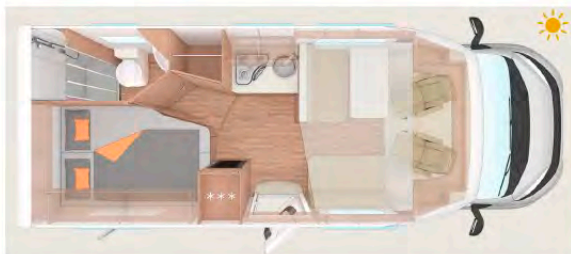
Key figures:

Engine: 2,3 l Multijet₂ (96 kW/130 PS)

Fuel type: Diesel

Transmission: Manual

- Fresh Water tank
- Waste water tank.
- TRUMA Gas operated heating.
- TRUMA Hot water supply
- Refrigerator - 3way (220V, 12V, Gas)
- Dometic Cassette Toilet - disposable at campgrounds and selected gas stations.
- 2 x 10 kg gas bottles, of which one is full and to be returned full.



Motorhomes are strictly forbidden on roads that are marked with an **F** on public maps, as well as Kjölur (road 35) or Kaldidalur (road 550).