



## Test Procedure for NCN26010BMNEVB Bridge Board

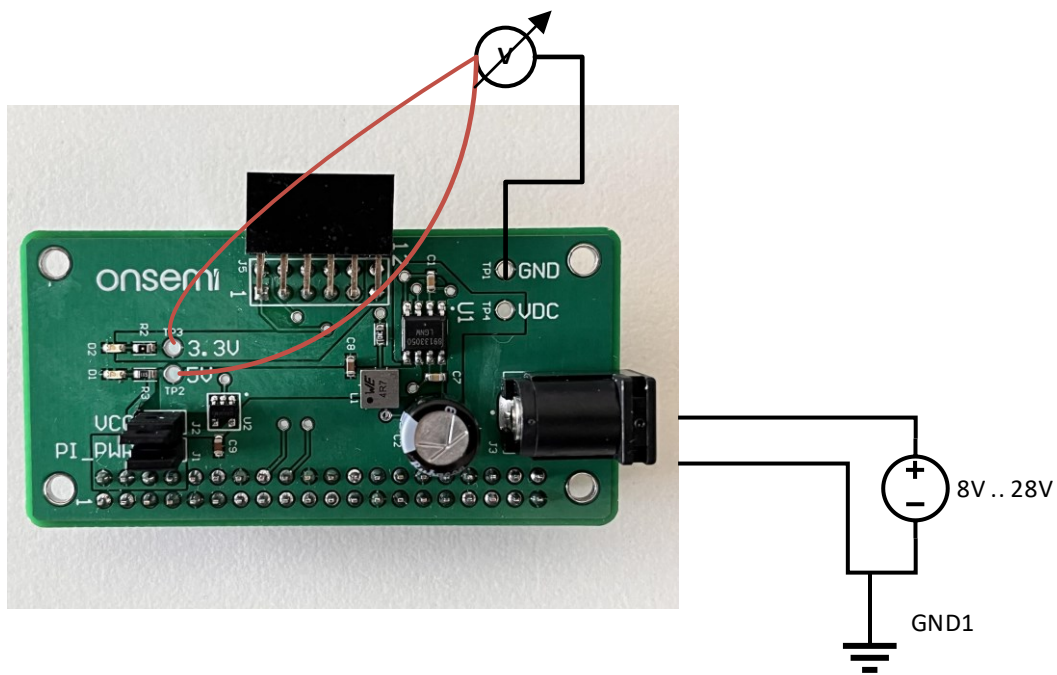


Figure 1: Test Setup

### Test Procedure

1. Connect 8V DC source to J3 or to TP4 (VCC) and TP1 (GND)
2. Check TP2 with Voltmeter and confirm 5V output
3. Check TP3 with Voltmeter and confirm 3.3V output
4. Increase VCC to 28V and redo check 2. and 3.
5. Optionally connect a Raspberry Pi and redo steps 1 to 4 with the Raspberry Pi running some software.

Alternatively, connect a 1.8 Ohm /15W resistor between TP2 and TP1 redo steps 1 to 4

Voltages should be nominal +/- 10%