

**LGB** documents provided courtesy of:

**TRAINLI**

You can find everything you need for your hobby at

[Click Here >>>](#) [www.trainli.com](http://www.trainli.com)

+1 (775) 302-8011

[Say thank you and like us on Facebook](#)

<https://www.facebook.com/trainlipage/>

# Bedienungsanleitung

Instruction  
Instructions de Service

**67403**

**67403 LGB-Patent-Kugellageradsätze**  
aus Metall, in denen jedes Rad einzeln in einem Kugellager läuft. Mit Kontakzapfen und Stecker für Lichtanschluss. Sehr geringer Folwiderstand, der das Fahren langer beleuchteter Züge erlaubt. Nachrüstung von Innenbeleuchtungen nur noch leichter ausführbar. **Nicht inklusiv.**

**30670**



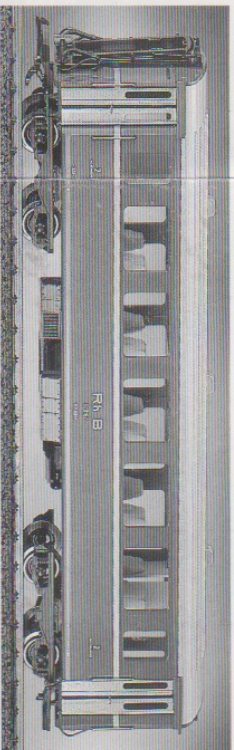
**30680**

**67403 LGB Patented Ball Bearing Wheel Sets**  
Ball bearings in each wheel decrease wheel friction and increase pulling capacity. Perfect for heavy rolling stock and long trains. Includes integral electrical contacts and connections for easy lighting hook-ups. Fit most LGB rolling stock. **Not included.**



**31670**

**67403 Paire d'essieux à billes (patente LGB).**  
Par les goupilles de contact et des fiches, ces essieux assurent la prise de courant pour l'éclairage. Leur très faible résistance au roulement permet de faire circuler de longs convois éclairés. Ce dispositif simplifie aussi l'installation ultérieure de l'éclairage. **Ftz.: Nicht inklusiv.**



30670/69 1195 5



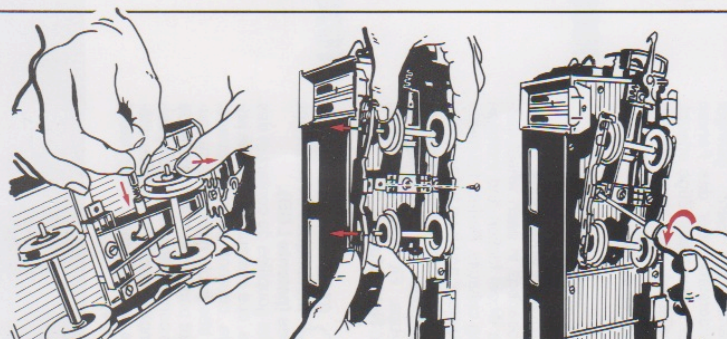
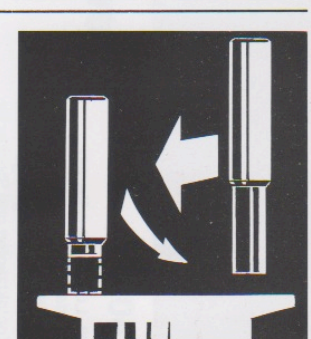
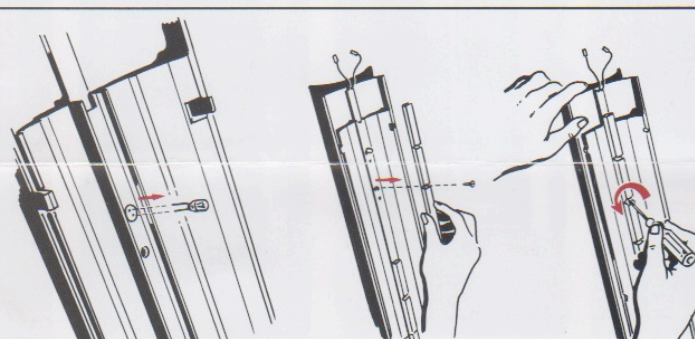
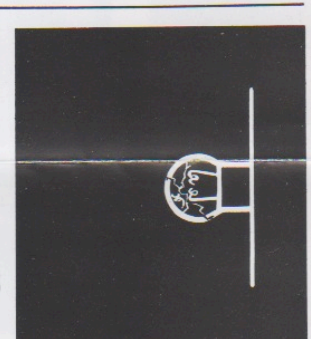
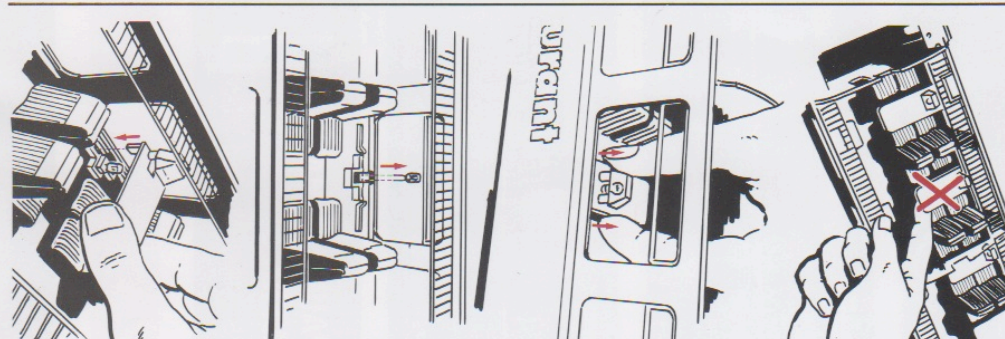
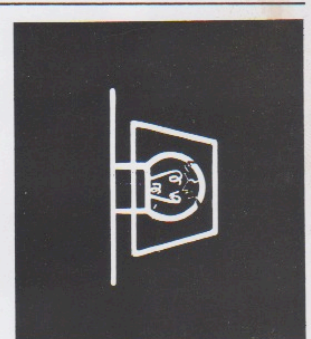
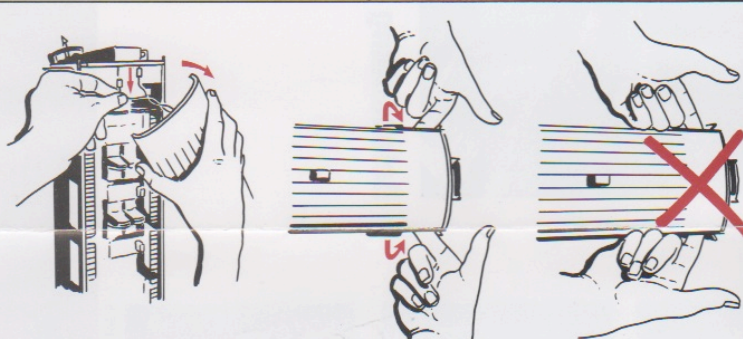
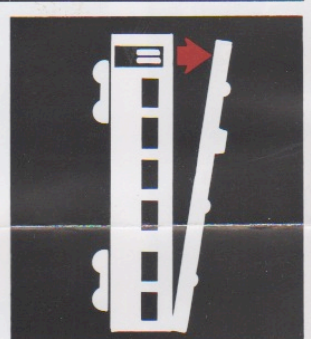
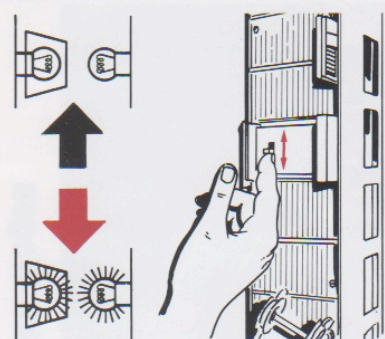
**Beleuchtung RHB-Wagen**

**ERNST PAUL LEHMANN  
PATENTWERK**

Saganer Str. 1-5 · D-90475 Nürnberg

 made  
in  
Germany





50511  
(5051/1)  
LGB Service

