

Pet Wand

Model: PES-142

Installation and User Guide

For more information visit www.pets.waterpik.com

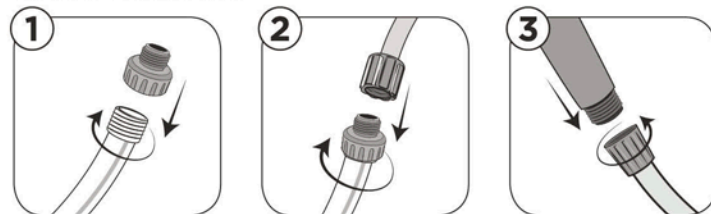
Pet Wand System Includes:



FN: 20022582-F AE

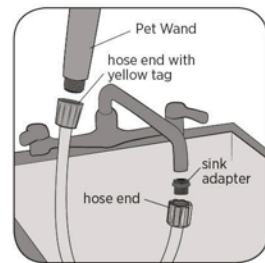
Installation Guide

Outdoor Installation:



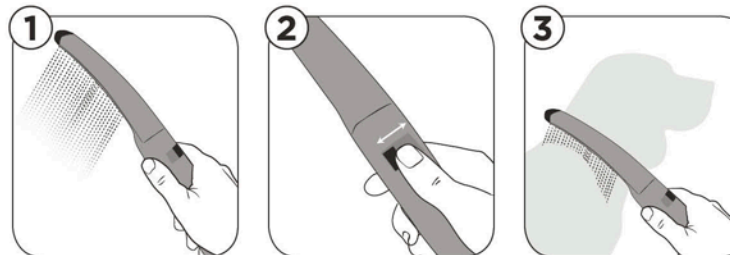
1. Confirm that the rubber washer is inside the outdoor adapter. Attach outdoor adapter to garden hose.
2. Screw on Waterpik™ hose to outdoor adapter.
3. Screw the pet wand onto the hose connector with the yellow tag.

Utility Sink Installation:



1. If there is an aerator or filter screen cartridge on the spout of your sink, then remove it.
2. Confirm that there is a washer inside the sink adapter. Screw the adapter onto your sink faucet. The adapter has threads on the inside and outside of the connection to fit most faucet types.
3. Screw the hose onto the utility sink adapter.
4. Screw the wand onto the hose end with the yellow tag.

User Guide



1. **Turn on the water**
2. **Adjust:** Find appropriate water pressure by moving the blue flow control lever right or left.
3. **Use WaterComb™ Spray to get your dog wet.** Place the pet wand against the fur and gently push the water down the dog's body until the coat is fully wet.

User Guide Continued



4. **Reduce:** Turn the flow control lever to the right to reduce the water pressure so that you can lather with both hands.
5. **Lather:** with shampoo.
6. **Adjust:** Turn the flow control lever to increase water pressure.

User Guide Continued

Care & Cleaning

Trouble Shooting Guide

Problem	Solution
Leaking at hose connection	<ol style="list-style-type: none"> Confirm the hose is screwed tight onto the pet wand. Hand-tighten only. Do not over tighten with tools or connector may crack. Confirm there is a washer inside the hose connector. If you are missing a washer, please contact customer service.
Mineral Deposits in spray nozzles	<ol style="list-style-type: none"> Unscrew wand from hose. Soak the wand face down in 1-2 cups of white vinegar (white vinegar only) for 2-3 hours. Reconnect to hose and run water through.

Warnings

Never aim the spray directly at your pet's eyes, ears, mouth, or nose.
Avoid getting water into your pet's ears.
Do not use on pets that are pregnant, nursing, or under 12 weeks without the recommendation of a Vet.
Never leave wand or pet unattended while water is on.
This product is not a toy and intended for cleaning only.
To avoid hot water dangers and conserve even more energy, make sure your water heater is set at 120°F (48.9°C) or below.
Test the water temperature with your hand before bathing.

Warnings

For external use only. The potentially deadly amoeba, Naegleria fowleri, may be present in some tap water or unchlorinated well water.
If product malfunctions or becomes damaged, stop use and contact Water Pik, Inc. for replacement. In the U.S. call our toll-free Customer Assistance Line: 1-800-525-2774.
Water Pik, Inc. a subsidiary of Church & Dwight Co., Inc. 1730 East Prospect Road Fort Collins, CO 80553-0001 U.S.A.
www.pets.waterpik.com
Waterpik® (stylized) is a trademark of Water Pik, Inc. registered in China, EU, United Kingdom and United States.
WaterComb™ is a trademark of Water Pik, Inc. © 2018 Water Pik, Inc. Printed in China.

Limited Lifetime Warranty

Save your receipt as proof of purchase is required for warranty action.
Water Pik, Inc. warrants to the original purchaser of this product that it is free from defects in material and workmanship for as long as the original purchaser owns this product. Water Pik, Inc. will replace the product which in our opinion is defective, provided that the product has not been abused, misused, altered or damaged after purchase. (This includes damage due to use of tools or harsh chemicals.) In the event an item has been discontinued we will replace with what we deem to be the closest product. Water Pik, Inc. is not responsible for labor charges, installation, or other consequential cost. The responsibility of Water Pik, Inc. shall not exceed the original purchase price of the product. This warranty gives you specific legal rights. You may also have other rights that vary where you reside.

Binding Arbitration And Waiver Of Right To Assert Matters In Court And Right To Jury Trial
By purchasing, installing, or using this product you agree that any controversy or claim arising out of or relating to your purchase, use, modification, installation, or removal of this product shall be settled by binding arbitration. The arbitrator's decision will be final and binding. Judgment on the award rendered by the arbitrator may be entered in any court having jurisdiction over the matter. Further, you agree that you will not have the right to litigate any claim arising out of or in relation to your purchase, use, modification, installation, or removal of this product in any court or to have a jury trial on that claim.
Waiver Of Right To Participate In Class Actions Or Pursue Claims In A Representative Capacity.
Further, by purchasing, installing, or using this product you agree that arbitration must be on an individual basis. This means neither you, nor we, may join or consolidate claims in arbitration by or against other purchasers or users of Water Pik products or the general public. Additionally, you may not litigate in court or arbitrate any claims as a representative or member of a class or in a purported representative capacity on behalf of the general public, other purchasers or users of this product, other persons or entities similarly situated, or in a private attorney general capacity.

Arbitration of any matters shall be administered by the American Arbitration Association and conducted by one arbitrator in accordance with the consumer arbitration rules of the American Arbitration Association in effect at the time of filing of the demand. The venue for all such arbitrations shall be Colorado and any such arbitration shall be subject to the Federal Arbitration Act and Colorado Law.

Français

Pet Wand

Modèle : PES-142

Guide d'installation et d'utilisation

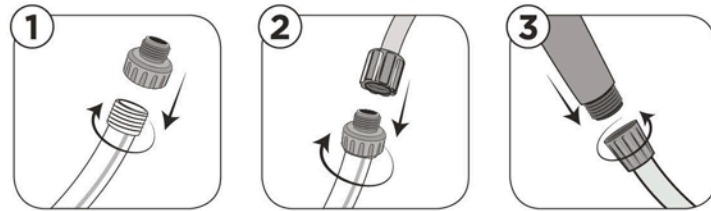
Pour de plus amples renseignements, veuillez visiter le site www.pets.waterpik.com

Le système Pet Wand comprend :

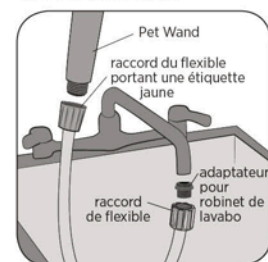


Guide d'installation

Installation à l'extérieur :



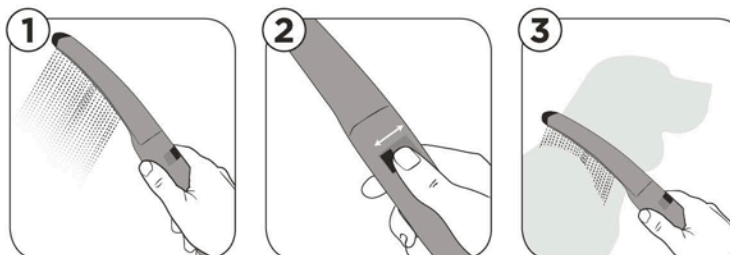
1. Vérifiez la présence de la rondelle en caoutchouc à l'intérieur de l'adaptateur pour une utilisation à l'extérieur. Fixez l'adaptateur sur le tuyau d'arrosage pour une utilisation à l'extérieur.
2. Vissez le flexible Waterpik™ sur l'adaptateur pour une utilisation à l'extérieur.
3. Vissez la douchette pour animaux sur le raccord du flexible portant une étiquette jaune.



Installation sur un robinet de lavabo :

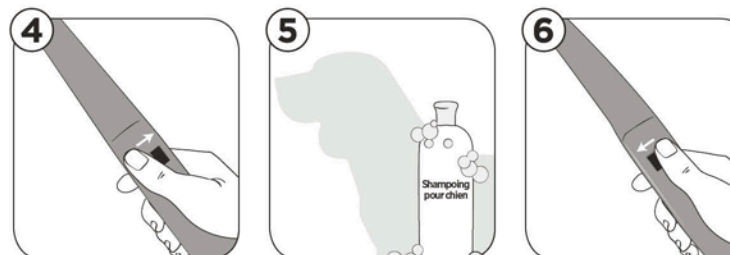
1. S'il y a un brise-jet ou une cartouche filtrante sur le bec du robinet de lavabo, retirez-le (la).
2. Vérifiez la présence d'une rondelle à l'intérieur de l'adaptateur pour robinet. Vissez l'adaptateur sur le robinet. L'adaptateur comporte un filetage à l'intérieur et à l'extérieur du raccord de sorte qu'il convienne à la plupart des types de robinet.
3. Vissez le flexible sur l'adaptateur pour robinet de lavabo/baignoire.
4. Vissez la douchette pour animaux sur l'extrémité du flexible portant une étiquette jaune.

Guide d'utilisation



1. **Ouvrez l'eau.**
2. **Réglage :** Trouvez la pression d'eau adéquate en déplaçant le levier bleu de contrôle du débit vers la droite ou la gauche.
3. **Utilisez le jet WaterComb™ pour mouiller votre chien.** Placez la douchette pour animaux contre la fourrure du chien et poussez délicatement l'eau le long du corps de l'animal jusqu'à ce qu'il soit entièrement mouillé.

Guide d'utilisation (suite)



4. **Réduire :** Tournez le levier de contrôle du débit vers la droite pour réduire la pression d'eau de sorte à pouvoir savonner à deux mains.
5. **Savonnage :** avec du shampooing.
6. **Réglage :** Tournez le levier de contrôle du débit pour augmenter la pression d'eau.

