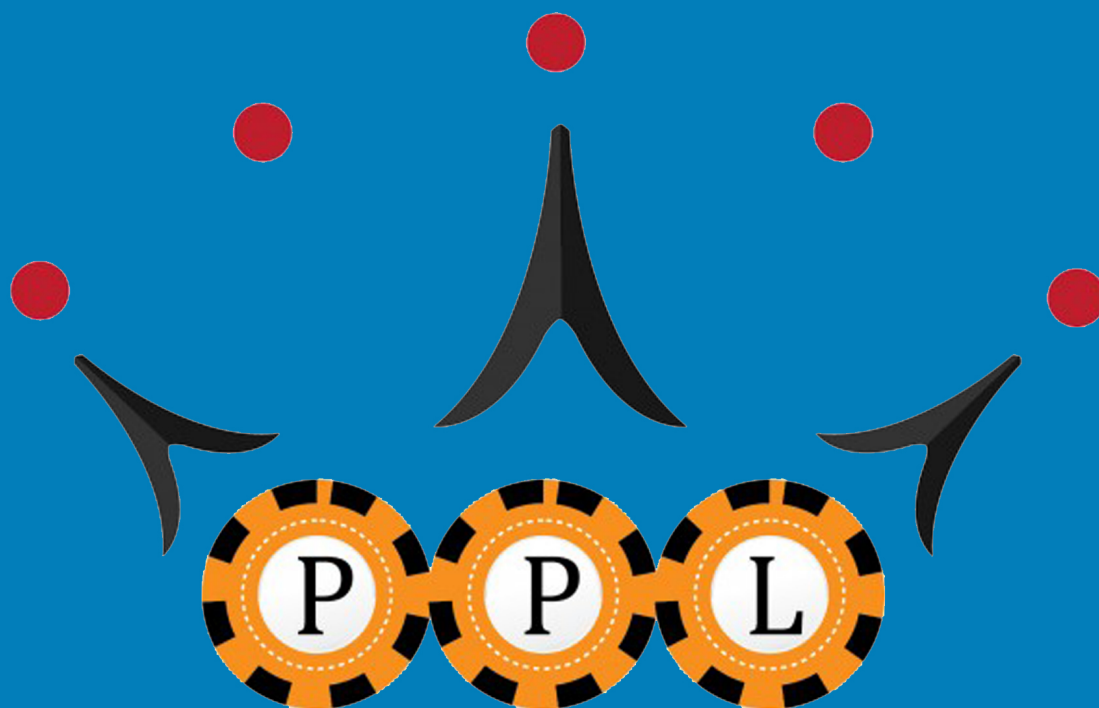




HOLDEM PROFILER



POKERPROLABS^{.COM}

INSTRUCTION MANUAL



TABLE OF CONTENTS:

WELCOME TO HOLDEM PROFILER	03
UPLOADING HANDS TO HOLDEM PROFILER	04
GETTING STARTED - CASH GAMES	05
ALTERNATIVE HAND HISTORY UPLOAD METHODS	06
CASH GAME REPORTS - ALL PLAYERS	07
CASH GAME REPORTS - SUMMARY	08
CASH GAME REPORTS - SESSIONS	09
CASH GAME REPORTS - POSITIONS	10
CASH GAME REPORTS - GAME LEVELS	11
CASH GAME REPORTS - CARDS	11
CASH GAME REPORTS - VS OPPONENTS	13
CASH GAME REPORTS - PREFLOP CARDS CHART	14
CASH GAME REPORTS - ALL HANDS	15
ADVANCED HOLDEM PROFILER USE: CUSTOMIZATION AND FILTERS	17
CUSTOM FILTERS	18
QUICK FILTERS TOOLBAR	19
CUSTOM STATS	20
CUSTOMIZING PLAYER LABELS	21
GLOSSARY	22



WELCOME TO HOLD'EM PROFILER

With Hold'em Profiler you can upload your hand histories to be stored online, ensuring you never lose them. Once you've uploaded hands, Hold'em Profiler will help you use these hands to exploit your opponents like never before.

With countless different filters, Hold'em Profiler can be a little overwhelming at first. But as long as you follow this step-by-step guide, you'll be up and running in no time.

We'll get started at the [Hold'em Profiler Home Page](#):

If you already have a PokerProLabs account you can login on the right side of the screen, otherwise you will be asked to fill in the following information to create an account:


Account Information

User name:

Email address:

Password:

Confirm password:

Captcha Code: 



UPLOADING HANDS TO HOLDEM PROFILER

Now that you've created your account and logged in, it's time to upload some hands to work with. Select **Upload Files** from the menu on the left. The following screen should appear:

Once you've selected your **Poker Network** from the drop down menu, a blue instruction link showing how to find the Hand Histories for that specific site will appear.

Use the **Browse** button to locate these files, and when the Selected Files appear below, hit the **Upload** button.

A progress screen will indicate the upload is taking place, and once completed you should see the number of hands imported are now displayed in the menu on the left side of the screen.

Files Parsed:	1 of 1
Current File:	HH20140127 T854634274 No Limit Hold'em \$2 + \$0.20.txt
Hands Parsed:	70
Hands Processed:	70
Hands Added:	70



GETTING STARTED

Now that you've uploaded some hands, let's have a look at how to get straight into using Hold'em Profiler, before dealing with the more advanced features later.

GETTING STARTED WITH HOLD'EM PROFILER - CASH GAMES

From the **Cash Games** menu on the left, select **All Players** -> **Summary**

Site	Player	Player Type	Sessions	Hours	Hands	\$	BB/100	VP\$IP	PFR %
	Begucil	Fish	1	0 hr 1 min	2	\$0.00	0.00	0.0%	0.0%
	benefithunter	Rock	1	0 hr 2 min	2	-\$1.18	-1180.00	50.0%	0.0%
	bet1021995	Loose/Aggressive	1	0 hr 4 min	2	\$0.07	70.00	50.0%	50.0%
	Beyondline	Loose/Passive	1	0 hr 3 min	3	\$0.05	16.67	0.0%	0.0%
	bigOneOne	Fish	1	0 hr 7 min	2	\$0.00	0.00	0.0%	0.0%
	bl@cksnowman	Loose/Aggressive	1	0 hr 5 min	4	\$0.37	92.50	25.0%	25.0%
	BluffPolice	Loose/Aggressive	4	1 hr 51 min	319	\$24.82	84.14	31.3%	27.0%
	Bob Belcher	Rock	1	0 hr 0 min	1	\$0.00	0.00	0.0%	0.0%
	Boban1309	Rock	1	0 hr 0 min	1	\$3.81	3810.00	100.0%	0.0%
	bobby44s	Rock	1	0 hr 0 min	1	-\$0.02	-40.00	0.0%	0.0%
	Bog1320	Loose/Passive	1	0 hr 0 min	1	\$0.00	0.00	0.0%	0.0%
	bond677	Loose/Passive	1	0 hr 5 min	2	-\$0.05	-25.00	0.0%	0.0%
	bosstian	Loose/Passive	1	0 hr 3 min	5	-\$1.63	-652.00	20.0%	20.0%
	BSnetz	Loose/Passive	1	0 hr 20 min	6	\$0.10	16.67	16.7%	16.7%
	Buloues89	Loose/Passive	1	0 hr 8 min	6	-\$0.15	-25.00	0.0%	0.0%

Here you will see that each player name has been given a specific **Player Type** label. You will also see various statistics about the player. Different player types should be played against using different strategies to maximize profit.

The statistics displayed here can be customized by clicking the **Change Statistics** spanner at the bottom left side of the summary.

The default Player Types and their respective icons are listed below.

Icon	Name	Priority
	Fish	1
	Good Player - Tight	2
	Gambler	3
	Rock	4
	Calling Station	5
	Loose/Aggressive	6
	Loose/Passive	7
	Tight/Aggressive	8
	Tight/Passive	9
	Wild	10
	Super Tight	11
	Good Player - Loose	12

Fish: Always finds it hard to fold. Don't bluff them, bet big with strong hands to get maximum value.

GP/Tight: Plays mostly good hands and plays them aggressively. Mixes it up a little too though. Avoid them unless you also have a good hand.

Gambler: A gambler loves to chase their draws. Raises often postflop.

Rock: Only plays premium hands. Make money from rocks by stealing their blinds.

Calling Station: Loves to call. Don't try to bluff them, instead bet big with decent to good hands and you will get paid off nicely.

Loose/Aggressive: This player plays a wide range of hands aggressively. Not as crazy as a Gambler, it is hard to put them on a hand. Sometimes you might have to call them down with a hand weaker than you normally would.

Loose/Passive: Similar to a Fish, this player loves to call so just bet for value.

Tight/Aggressive: Similar to GP/Tight, be careful as these guys are good.

Tight/Passive: Like the Rocks, just steal their blinds and watch out if they raise you.

Wild: These players are unpredictable but will bluff away their stack if you're patient.

Super Tight: If he doesn't have a huge hand he isn't playing. Steal his blinds.

GP/Loose: A more cautious Loose/Aggressive. Hard to play against, keeps you guessing as to if they have it or if they are bluffing.



ALTERNATIVE HAND HISTORY UPLOAD METHODS

As well as Upload Hands, you also have the option to **Upload Text** or **Auto Upload**

To upload raw text Hand Histories simply choose the poker site you got the Hand History from, paste the history into the uploader, and hit **Upload**.

The screenshot shows a web interface for uploading hand histories. On the left is a navigation menu with categories like 'Upload Hands', 'Cash Games', 'Tournaments', 'Account', and 'About Us'. The 'Upload Text' option is highlighted. The main content area is titled 'Hand History' and includes a dropdown menu for 'Poker Network' (currently set to 'Any Poker Site'), a large text input field for the hand history, and 'Reset' and 'Upload' buttons at the bottom.

To configure **Auto Upload**, you will need to setup the PPL program SuperHUD to automatically get hands, which will then be sent to Hold'em Profiler for you to analyze.



CASH GAME REPORTS - ALL PLAYERS

Cash Games (614 hands)
 All Players
 Summary
 Summary by all levels
 Summary by level

In the **All Players** section there are three options. **Summary** was already shown in **Getting Started - Cash Games**. **Summary by all levels** and **Summary by level** are quite similar to the Summary page you are familiar with.

Summary by all levels looks identical to **Summary** at first glance, however it will split individual players into different stakes they have played at, as shown below. This way you can tell if they play differently when the stakes are higher or lower.

	BluffPolice		\$0.02/\$0.05 NL (6 Max)	1	0 hr 13 min	48	\$1.41	58.75	27.1%	25.0%
	BluffPolice		\$0.05/\$0.10 NL (6 Max)	3	1 hr 37 min	271	\$23.41	86.38	32.1%	27.3%

Summary by level allows you to select a specific table stake. Once you have done this, below the stake selection menu you will see a Summary screen containing only hands played at those specific table stakes.

Levels summary

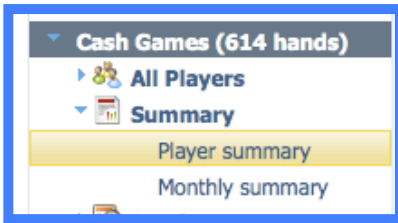
Site	Level	Hands	Avg. Player	Avg. Pot
	\$15/\$30 NL (2 Max)	47	2.0	\$188.29
	\$20/\$40 NL (2 Max)	45	2.0	\$126.88
	\$25/\$50 NL (2 Max)	29	2.0	\$134.48
	\$30/\$60 NL (2 Max)	19	2.0	\$287.36
	\$0.05/\$0.10 NL (6 Max)	142	6.0	\$1.59
	\$0.02/\$0.05 NL (6 Max)	48	5.0	\$0.87
	\$0.05/\$0.10 NL (6 Max)	271	4.0	\$1.79

Level players summary

Player	Player Type	Sessions	Hours	Hands	\$	BB/100	VP\$IP	PFR %
ihaveashell		1	0 hr 44 min	16	-\$1.80	-112.50	18.8%	18.8%
Pow3r86		4	0 hr 14 min	9	-\$0.71	-78.89	44.4%	33.3%
BluffPolice		3	1 hr 37 min	271	\$23.41	86.38	32.1%	27.3%
Kalapaju		2	1 hr 30 min	111	\$4.10	36.94	28.8%	18.9%
DrZomb		2	1 hr 33 min	95	-\$6.02	-63.37	24.2%	18.9%
91FCampos		2	0 hr 29 min	39	\$0.98	25.13	12.8%	10.3%
HousewHorEx		1	1 hr 0 min	101	-\$3.21	-31.78	24.8%	23.8%



CASH GAME REPORTS - SUMMARY



In the **Summary** section there are two options. **Player Summary** allows you to look at a summary of a specific player across several stakes. **Monthly Summary** allows you to see how a player's game and performance has changed over different months

Player Summary will show you the following report summarizing how a player plays at different stakes. Select **Change** to change the player displayed in the report.

Level	Hands	\$	VP\$IP	PFR %	TotalAFq %	W\$SD	BB/100
\$0.02/\$0.05 NL (6 Max)	48	\$1.41	27.1%	25.0%	32.3%	0.0%	58.75
\$0.05/\$0.10 NL (6 Max)	271	\$23.41	32.1%	27.3%	34.1%	41.7%	86.38

Monthly Summary will allow you to look at a player's statistics for different months. Once you click on a certain month, the daily report for every day of that month that you have hands for will be shown underneath the monthly report.

Month	Sessions	Hands	\$	VP\$IP	PFR %	TotalAFq %	W\$SD	BB/100	Rake
July, 2014	2	64	\$2.21	25.0%	23.4%	31.3%	0.0%	55.25	\$0.38
August, 2014	2	255	\$22.61	32.9%	27.8%	34.5%	41.7%	88.67	\$5.58
2 Month(s)	4	319	\$24.82	31.3%	27.0%	33.8%	41.7%	84.14	\$5.96

Day	Sessions	Hands	\$	VP\$IP	PFR %	TotalAFq %	W\$SD	BB/100	Rake
Wednesday, July 02, 2014	1	16	\$0.80	18.8%	18.8%	27.8%	0.0%	50.00	\$0.05
Wednesday, July 30, 2014	1	48	\$1.41	27.1%	25.0%	32.3%	0.0%	58.75	\$0.33
2 Day(s)	2	64	\$2.21	25.0%	23.4%	31.3%	0.0%	55.25	\$0.38



CASH GAME REPORTS - SESSIONS



In the **Sessions** section there are two report options. **All sessions** report shows all imported sessions for one player. **Sessions by levels** shows all imported sessions for one player, but this time separated by table stake.

All Sessions allows you to look at all the individual sessions that a specific player has played.

Session	Lasted	Tables	Hands	\$	VP\$IP	PFR %	TotalAFq %	W\$SD	BB/100
8/1/2014 11:19 AM - 8/1/2014 12:23 PM	1 hr 4 min	1	176	\$10.30	28.4%	25.0%	34.0%	42.9%	58.52
8/1/2014 1:24 PM - 8/1/2014 1:54 PM	0 hr 30 min	1	79	\$12.31	43.0%	34.2%	35.6%	40.0%	155.82
7/30/2014 10:46 PM - 7/30/2014 10:59 PM	0 hr 13 min	1	48	\$1.41	27.1%	25.0%	32.3%	0.0%	58.75
7/2/2014 8:53 AM - 7/2/2014 8:57 AM	0 hr 4 min	1	16	\$0.80	18.8%	18.8%	27.8%	0.0%	50.00
4 Session(s)	1 hr 51 min	4	319	\$24.82	31.3%	27.0%	33.8%	41.7%	84.14

Once you choose a specific session, the table stakes will be shown below.

Sessions by levels is almost identical to **All Sessions**, the only difference being that sessions will be separated according to what table stakes they were played at:

Session	Level	Lasted	Tables	Hands	\$	VP\$IP	PFR %	TotalAFq %	W\$SD
8/1/2014 11:19 AM - 8/1/2014 12:23 PM	\$0.05/\$0.10 NL (6 Max)	1 hr 4 min	1	176	\$10.30	28.4%	25.0%	34.0%	42.9%
8/1/2014 1:24 PM - 8/1/2014 1:54 PM	\$0.05/\$0.10 NL (6 Max)	0 hr 30 min	1	79	\$12.31	43.0%	34.2%	35.6%	40.0%
7/30/2014 10:46 PM - 7/30/2014 10:59 PM	\$0.02/\$0.05 NL (6 Max)	0 hr 13 min	1	48	\$1.41	27.1%	25.0%	32.3%	0.0%
7/2/2014 8:53 AM - 7/2/2014 8:57 AM	\$0.05/\$0.10 NL (6 Max)	0 hr 4 min	1	16	\$0.80	18.8%	18.8%	27.8%	0.0%



CASH GAME REPORTS - POSITIONS

In the **Positions** section there are two report options. **Positions summary** will show you how a player plays from different positions at the table. **Positions by table size** will also do this, however it will separate the same positions for different table size eg. Button (6 Max) will be separated from Button (9 Max).

Positions summary will allow you to see how an individual player plays from different table positions. This will allow you to spot traits in the player that are specific to a certain position.

Position	Hands	\$	PFR %	VP\$IP	TotalAFq %	W\$SD
Under the Gun	69	\$9.37	23.2%	23.2%	30.2%	33.3%
Middle	27	-\$0.70	22.2%	22.2%	25.0%	0.0%
Cutoff	31	-\$0.66	29.0%	32.3%	29.3%	50.0%
Button	61	\$4.83	39.3%	41.0%	42.5%	0.0%
Small Blind	59	\$10.79	35.6%	39.0%	39.2%	50.0%
Big Blind	72	\$1.19	13.9%	27.8%	29.5%	50.0%
6 Position(s)	319	\$24.82	27.0%	31.3%	33.8%	41.7%

Positions by table size will separate the positions based on the specific table size at which the hands were played. Here you can see Under the Gun from above has become Under the Gun (6 Max). This is very useful if you play different table sizes since Under the Gun in a 6 Max table is totally different to Under the Gun at a 9 Max table.

Position	Table Size	Hands	\$	PFR %	VP\$IP	TotalAFq %	W\$SD
Under the Gun	6 Max	69	\$9.37	23.2%	23.2%	30.2%	33.3%
Middle	6 Max	27	-\$0.70	22.2%	22.2%	25.0%	0.0%
Cutoff	6 Max	31	-\$0.66	29.0%	32.3%	29.3%	50.0%
Button	6 Max	61	\$4.83	39.3%	41.0%	42.5%	0.0%
Small Blind	6 Max	59	\$10.79	35.6%	39.0%	39.2%	50.0%
Big Blind	6 Max	72	\$1.19	13.9%	27.8%	29.5%	50.0%
6 Position(s)	1 Type(s)	319	\$24.82	27.0%	31.3%	33.8%	41.7%

Clicking on a position for either of these two summaries will show a **Preflop** section below it.

Cards	Hands	\$	PFR %	VP\$IP	TotalAFq %	W\$SD
A8s	1	\$0.15	100.0%	100.0%	100.0%	0.0%
A4s	1	\$0.15	100.0%	100.0%	100.0%	0.0%
AKo	1	\$0.70	100.0%	100.0%	100.0%	0.0%
A7o	1	\$0.00	0.0%	0.0%	0.0%	0.0%
A5o	1	\$0.00	0.0%	0.0%	0.0%	0.0%
A2o	1	\$0.00	0.0%	0.0%	0.0%	0.0%
KK	1	\$0.22	100.0%	100.0%	100.0%	0.0%
46 Hand Type(s)	61	\$4.83	39.3%	41.0%	42.5%	0.0%



CASH GAME REPORTS - GAME LEVEL



In the **Game Level** section there is one report, All Levels. This will show you stats for a player across different table stakes.

You can see differences in how the player plays separate table stakes, and the overall stats at the bottom in bold.

Player: BluffPolice (IP) Change Date: All Hands Hold'em Filter: No Filter Edit Refresh

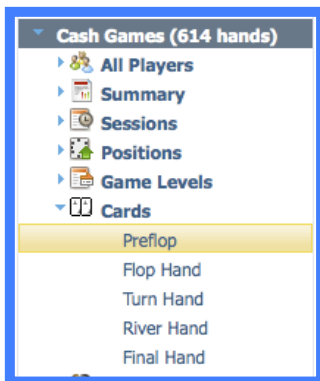
Levels

Group By: Month Player

Level	Lasted	Sessions	Hands	\$	VP\$IP	PFR %	TotalAFq %	W\$SD	BB/100
\$0.02/\$0.05 NL (6 Max)	0 hr 13 min	1	48	\$1.41	27.1%	25.0%	32.3%	0.0%	58.75
\$0.05/\$0.10 NL (6 Max)	1 hr 37 min	3	271	\$23.41	32.1%	27.3%	34.1%	41.7%	86.38
2 Game Level(s)	1 hr 51 min	4	319	\$24.82	31.3%	27.0%	33.8%	41.7%	84.14

Change Statistics Save Layout View 1 - 2 of 2

CASH GAME REPORTS - CARDS



In the **Cards** section there are five reports. These reports allow you to look at how someone played specific hole cards they held **Preflop**, or how they played their **Flop Hand**, **Turn Hand**, **River Hand** or the **Final Hand** they had.

Preflop allows you to see stats for every preflop hand that an individual player had. Clicking on a specific hand will allow you to see how the player played those hole cards by position.

Player: BluffPolice (IP) Change Date: All Hands Hold'em Filter: No Filter Edit Refresh

Preflop

Group By: Month Player

Cards	Hands	\$	PFR %	VP\$IP	TotalAFq %	W\$SD
AA	1	\$0.07	100.0%	100.0%	100.0%	0.0%
AQs	2	\$5.00	100.0%	100.0%	100.0%	0.0%
AJs	1	\$0.15	100.0%	100.0%	100.0%	0.0%
ATs	1	-\$0.60	100.0%	100.0%	50.0%	0.0%
As	1	\$0.15	100.0%	100.0%	100.0%	0.0%
A7s	2	-\$0.15	0.0%	0.0%	0.0%	0.0%
A6s	2	-\$0.80	50.0%	50.0%	33.3%	0.0%
A5s	3	-\$1.10	66.7%	66.7%	50.0%	0.0%
131 Hand Type	319	\$24.82	27.0%	31.3%	33.8%	41.7%

Change Statistics Save Layout View 1 - 131 of 131

Positions by table size

Player	Site	Position	Table Size	Hands	\$	PFR %	VP\$IP	TotalAFq %	W\$SD
BluffPolice		Button	6 Max	1	\$0.15	100.0%	100.0%	100.0%	0.0%



Flop Hand allows you to see how the player played specific flop hands, and the results. Clicking on a specific hand category will show below the preflop hole cards used to make those flop hands. Board texture will be factored in to the hand (displayed in brackets) as you can see below.

Board/Hand	Hands	\$	PFR %	VP\$IP	TotalAFq %	W\$SD
No Pair/Middle Set (2 cards flush or straight on board)	1	\$8.79	100.0%	100.0%	100.0%	100.0%
No Pair/Low Set	1	\$2.10	100.0%	100.0%	80.0%	0.0%
No Pair/Low Set (3 cards flush or straight on board)	1	\$0.66	0.0%	100.0%	50.0%	0.0%
No Pair/Top Overpair TT (2 cards flush or straight on board)	1	\$0.59	0.0%	100.0%	50.0%	0.0%
No Pair/Middle Overpair 9-2 (2 cards flush or straight on board)	1	\$0.68	0.0%	100.0%	33.3%	0.0%
No Pair/Top Pair with Ace Kicker (2 cards flush or straight on board)	2	-\$0.82	50.0%	100.0%	16.7%	50.0%
No Pair/Top Pair with Jack Kicker (2 cards flush or straight on board)	1	\$0.76	100.0%	100.0%	100.0%	0.0%
No Pair/Top Pair with T-2 Kicker (2 cards flush or straight on board)	1	\$0.22	0.0%	100.0%	50.0%	0.0%
No Pair/Middle Pair with Ace Kicker (3 cards flush or straight on board)	1	-\$0.60	100.0%	100.0%	50.0%	0.0%
31 Hand Type(s)	319	\$24.82	27.0%	31.3%	33.8%	41.7%

View 1 - 31 of 31

Cards	Hands	\$	PFR %	VP\$IP	TotalAFq %	W\$SD
66	1	\$8.79	100.0%	100.0%	100.0%	100.0%

Turn Hand and **River Hand** are identical for the Turn and River as **Flop Hand** is for the Flop. The only difference is that **River Hand** will not include draws as it is no longer possible to have a draw on the River.

Final Hand will show the final categories of hands and the corresponding stats for these hand groups. Hands that did not see a flop, or where the hole cards are unknown, will be displayed as na (not applicable).

Final Hand	Hands	\$	PFR %	VP\$IP	TotalAFq %	W\$SD	Saw Turn %	Saw River %	WTSD %
HighCard	23	\$7.08	69.6%	91.3%	64.3%	0.0%	65.2%	17.4%	0.0%
OnePair	14	-\$4.15	57.1%	100.0%	51.5%	33.3%	71.4%	42.9%	21.4%
Two Pairs	10	\$0.08	70.0%	90.0%	53.8%	33.3%	90.0%	80.0%	60.0%
Three of a Kind	4	\$9.48	75.0%	100.0%	73.3%	50.0%	75.0%	75.0%	50.0%
Straight	1	\$9.86	100.0%	100.0%	40.0%	100.0%	100.0%	100.0%	100.0%
na	267	\$2.47	19.1%	19.1%	20.7%	0.0%	0.0%	0.0%	0.0%
6	319	\$24.82	27.0%	31.3%	33.8%	41.7%	11.9%	6.9%	23.1%

View 1 - 6 of 6

Cards	Hands	\$	PFR %	VP\$IP	TotalAFq %	W\$SD
86s	1	\$9.86	100.0%	100.0%	40.0%	100.0%

This means that for all players other than yourself (as you always know your own hole cards), Final Hand will only display hands that went to showdown. Clicking the hand category will show the hole cards used to make that hand underneath in the **Preflop** chart.



CASH GAME REPORTS - VS OPPONENTS



In the **vs. Opponents** section there is a Summary that will show how a specific player has performed against all their opponents.

You can see how much a person (including yourself) has lost or won vs different opponents. You can even see playing stats vs specific opponents and therefore spot if you or someone else is playing differently vs different opponents.

Opponent	Site	Hands	Hands Won	Hands Lost	\$	VP\$IP	PFR %	3Bet P
Kalapaju		5	3	2	-\$1.88	100.0%	60.0%	0.0%
qrwaKlincz		5	4	1	\$4.35	100.0%	80.0%	50.0%
DrZomb		2	1	1	-\$0.53	100.0%	50.0%	0.0%
HousewHorEx		2	1	1	\$0.02	100.0%	0.0%	0.0%
MasterEgg		2	0	2	-\$2.16	100.0%	50.0%	0.0%
GeldHerr02		2	1	1	\$4.45	100.0%	100.0%	100.0%
Xernobyl		2	2	0	\$10.52	100.0%	50.0%	0.0%
Patricio1993		2	2	0	\$0.66	100.0%	100.0%	0.0%
thefatmourinho		2	0	2	-\$1.10	0.0%	0.0%	0.0%
OwlMidNight		1	0	1	-\$0.66	100.0%	100.0%	0.0%
ihaveashell		1	1	0	\$1.22	100.0%	0.0%	0.0%
29 Player(s)		44	25	19	\$26.06	93.2%	65.9%	20.0%



CASH GAME REPORTS - PREFLOP CARDS CHART

Cash Games (614 hands)

- All Players
- Summary
- Sessions
- Positions
- Game Levels
- Cards
- vs. Opponents
- Preflop Cards Chart**
- All Hands

The **Preflop Cards Chart** will show you how profitable hands have been for a player. **Green** hands have won money overall, while **Red** hands have lost money.

Black hands either won exactly \$0 overall, or no hands with those specific hole cards have been imported for that player.

The Card Chart is most useful for checking your own hands, to see what hands you are playing profitably and what hands are losing you money and should be folded instead.

Player: BluffPolice (IP) Change Date: All Hands ▼ Hold'em ▼ Filter: No Filter ▼ Edit ▼

Known Cards													Unknown Cards		
AA	AKs	AQs	AJs	ATs	A9s	A8s	A7s	A6s	A5s	A4s	A3s	A2s	Won	Lost	
0.31%	AKs	0.63%	0.31%	0.31%	A9s	0.31%	0.63%	0.63%	0.94%	0.31%	A3s	0.63%	Preflop	0.00%	0.00%
0.63%	1.25%	0.31%	0.31%	KTs	K9s	K8s	K7s	K6s	K5s	K4s	K3s	K2s	Flop	0.00%	0.00%
1.25%	1.88%	0.31%	0.94%	0.31%	0.31%	0.31%	0.31%	0.31%	0.31%	0.31%	0.31%	0.31%	Turn	0.00%	0.00%
0.63%	0.31%	0.63%	0.31%	JTs	J9s	J8s	J7s	J6s	J5s	J4s	J3s	J2s	River	0.00%	0.00%
0.31%	0.63%	1.88%	0.31%	TT	T9s	T8s	T7s	T6s	T5s	T4s	T3s	T2s	Showdown	0.00%	0.00%
0.63%	0.94%	0.94%	0.63%	1.88%	0.94%	98s	97s	96s	95s	94s	93s	92s		0.00%	0.00%
1.25%	0.94%	0.63%	0.94%	0.31%	0.63%	0.31%	0.31%	0.31%	0.31%	0.63%	83s	82s			
1.25%	0.94%	1.25%	1.88%	0.94%	1.57%	87o	77	76s	75s	74s	73s	72s			
0.63%	0.63%	0.94%	1.88%	0.94%	0.63%	86o	76o	66	65s	64s	63s	62s			
0.94%	0.94%	0.94%	1.25%	0.94%	1.57%	0.31%	1.25%	0.31%	0.31%	0.31%	0.31%	0.94%			
1.25%	1.25%	1.25%	0.63%	1.57%	1.25%	1.25%	1.25%	1.25%	0.63%	0.63%	0.63%	0.63%			
0.31%	0.63%	0.31%	1.25%	1.25%	0.31%	1.25%	0.31%	1.57%	0.94%	1.25%	0.31%	0.31%			
1.25%	0.94%	0.63%	0.31%	0.63%	0.94%	0.63%	0.94%	0.63%	0.63%	1.25%	0.94%	0.31%			

OO+KK+AA+AK Frequency: 2.19% Legend: **KK**-positive profit **63o**-negative profit

If you click on a specific hand in the chart, you will be shown every hand for those hole cards.

Only Show Marked Hands Show Known Holecards

	Time	Stakes	Cards	Flop	Turn	River	\$	bbs	EV \$ Diff	Pos	Facing Preflop	Action
<input type="checkbox"/>	7/30/2014 10:50:54 PM	€0.02/€0.05 NL	R				€0.07	1.40			Unopened	PFR
1 hand							\$0.07	0.01				

Columns Save Layout Page 1 of 1 View 1 - 1 of 1

Hovering over a hand in the chart will tell you how much was won or lost, and how many times the specific hand was played:

KK	KQs	KJs
1.25%	0.31%	0.31%
KQo	Hands: 4	
1.88%	Profit: 1.38%	



CASH GAME REPORTS - ALL HANDS

Cash Games (614 hands)

- All Players
- Summary
- Sessions
- Positions
- Game Levels
- Cards
- vs. Opponents
- Preflop Cards Chart
- All Hands

All Hands is the last cash game report, and it is simply a list of every cash game hand that you have imported into Hold'em Profiler.

You can also use All Hands to see all hands for other players as well, by using the **Change** button and selecting another player.

All Hands allows you to quickly see the hole cards, action on every street, and overall results.

	Time	Stakes	Cards	Flop	Turn	River	\$	bbs	EV \$ Diff	Pos	Facing Preflop	Action
<input type="checkbox"/>	8/1/2014 1:54:08 PM	€0.05/€0.10 NL		R	B	X	-€0.50	-5.00			Unopened	PFR
<input type="checkbox"/>	8/1/2014 1:53:23 PM	€0.05/€0.10 NL		R	X	F	-€0.60	-6.00			Raiser(s) + Cal	PFR
<input type="checkbox"/>	8/1/2014 1:52:52 PM	€0.05/€0.10 NL		C	C	F	-€0.60	-6.00			1 Raiser	VPIP
<input type="checkbox"/>	8/1/2014 1:52:48 PM	€0.05/€0.10 NL		F			-€0.05	-0.50			1 Raiser	
<input type="checkbox"/>	8/1/2014 1:52:31 PM	€0.05/€0.10 NL		F			€0.00	0.00		EA	Unopened	
<input type="checkbox"/>	8/1/2014 1:51:25 PM	€0.05/€0.10 NL		RC	XC	XRC	€9.86	98.60			Unopened	PFR
<input type="checkbox"/>	8/1/2014 1:51:12 PM	€0.05/€0.10 NL		F			€0.00	0.00			1 Raiser	
<input type="checkbox"/>	8/1/2014 1:51:08 PM	€0.05/€0.10 NL		F			€0.00	0.00		SB	Unopened	
<input type="checkbox"/>	8/1/2014 1:50:33 PM	€0.05/€0.10 NL		RF			-€1.00	-10.00			1 Raiser	PFR
<input type="checkbox"/>	8/1/2014 1:50:17 PM	€0.05/€0.10 NL		R			€0.15	1.50		SB	Unopened	PFR
<input type="checkbox"/>	8/1/2014 1:49:55 PM	€0.05/€0.10 NL		R			€0.10	1.00			Unopened	PFR
<input type="checkbox"/>	8/1/2014 1:49:47 PM	€0.05/€0.10 NL		F			€0.00	0.00			Unopened	
<input type="checkbox"/>	8/1/2014 1:49:31 PM	€0.05/€0.10 NL		R			€0.15	1.50		SB	Unopened	PFR
<input type="checkbox"/>	8/1/2014 1:49:25 PM	€0.05/€0.10 NL		F			€0.00	0.00			Unopened	

Clicking the **+** button will allow you to expand a particular hand out into even more detail. You will be given the option to **View in Text** (Left) or watch the hand in Hold'em Profiler's **Replayer**, to play out exactly as it did at the time.

View in text Hand Replayer

Hole cards:

Dealt to Z.Casanovaa

Preflop:

Ji Joo777 folds
 Z.Casanovaa raises \$0.2 to \$0.3
 Eeyored raises \$0.5 to \$0.8
 talbot66 folds
 Turuk47 folds
 NMGV folds
 Z.Casanovaa raises \$1.3 to \$2.1
 Eeyored raises \$4.35 to \$6.45
 Z.Casanovaa raises \$18.52 to \$24.97 and is all-in
 Eeyored calls \$11.51 and is all-in

Flop: (Pot: \$36.07)



With **All Hands** you can mark the hands that are significant, so that you can view them later.

<input type="checkbox"/>	Time	Stakes	Cards	Flop	Turn	River	\$	bbs	EV \$ Diff	Pos	Facing Preflop	Action		
<input type="checkbox"/>	8/1/2014 1:54:08 PM	€0.05/€0.10 NL	♠6 ♠5	R	♥Q ♥T ♥6	B	♠8	X	♥Q	X	-€0.50	-5.00	Unopened	PFR
<input type="checkbox"/>	8/1/2014 1:53:23 PM	€0.05/€0.10 NL	♠T ♠A	R	♥6 ♥T ♥Q	X	♠Q	F			Raiser(s) + Cal	PFR		
<input type="checkbox"/>	8/1/2014 1:52:52 PM	€0.05/€0.10 NL	♠7 ♠T	C	♠K ♠5 ♥7	C	♠A	F			1 Raiser	VPIP		
<input type="checkbox"/>	8/1/2014 1:52:31 PM	€0.05/€0.10 NL	♠2 ♥A	F			€0.00	0.00			EA	Unopened		
<input checked="" type="checkbox"/>	8/1/2014 1:51:12 PM	€0.05/€0.10 NL	♥T ♥5	F			€0.00	0.00			1 Raiser			
<input checked="" type="checkbox"/>	8/1/2014 1:51:08 PM	€0.05/€0.10 NL	♠A ♠A	F			€0.00	0.00			SB	Unopened		
<input checked="" type="checkbox"/>	8/1/2014 1:50:33						-€1.00	-10.00			1 Raiser	PFR		
<input type="checkbox"/>	8/1/2014 1:50:17						€0.15	1.50			SB	Unopened	PFR	
<input type="checkbox"/>	8/1/2014 1:49:47				♥5 ♠8	♥8	♥4	€0.00	0.00			Unopened		
<input type="checkbox"/>	8/1/2014 1:49:31						€0.15	1.50			SB	Unopened	PFR	
<input type="checkbox"/>	8/1/2014 1:49:25						€0.00	0.00				Unopened		
<input type="checkbox"/>	8/1/2014 1:49:11				♠2 ♠4	F	-€0.20	-2.00			Raiser(s) + Cal	VPIP		

First check the hands you want using the checkboxes on the left. The hands will be highlighted in yellow. Right click on these hands and choose **Mark Selected Hand(s)** to mark the hands.

A red flag will appear next to the hands, indicating that they have been marked.

Marked hands can then be viewed using the **Only Show Marked Hands** checkbox in the top left side of the report.

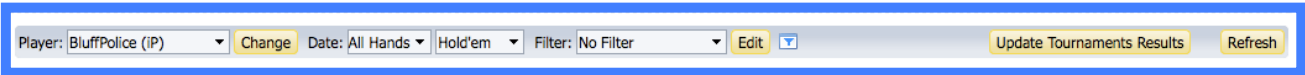
<input checked="" type="checkbox"/>	Time	Stakes	Cards	Flop	Turn	River	\$	bbs	EV \$ Diff	Pos	Facing Preflop	Action
<input checked="" type="checkbox"/>	8/1/2014 1:51:12 PM	€0.05/€0.10 NL	♥T ♥5	F			€0.00	0.00			1 Raiser	
<input checked="" type="checkbox"/>	8/1/2014 1:51:08 PM	€0.05/€0.10 NL	♠A ♠A	F			€0.00	0.00			SB	Unopened
<input checked="" type="checkbox"/>	8/1/2014 1:50:33 PM	€0.05/€0.10 NL	♥S ♥5	RF			-€1.00	-10.00			1 Raiser	PFR



ADVANCED HOLDEM PROFILER USE: CUSTOMIZATION & FILTERS

After you have become familiar with all of Holdem Profiler's various reports, you may then want to customize them and apply filters to even better suit your needs.

For both Cash Games and Tournaments, every report category except **All Players** will have the following toolbar:



For Cash Games the **Update Tournaments Results** button will not be there, but it will otherwise be identical. For **All Players**, you will see **Poker Site: All Poker Sites** instead of **Player: BluffPolice (IP)** **Change**

Below is a description of all the functions of the menu bar:

Poker Site: All Poker Sites	Select which Poker Site you wish to view the summary for.
Player: BluffPolice (IP) Change	Select which player you would like to view the report for.
Date: All Hands	View only data from a selected date range.
Hold'em	View only a specific game type: Hold'em, Omaha etc.
Filter: No Filter Edit	Apply a custom filter to the data (See Custom Filters)
▼	Opens the Quick Filter toolbar
Update Tournaments Results	Updates Tournament Results via SuperHUD
Refresh	Refreshes the Report

Custom Filters, the **Quick Filters** Toolbar and **Custom Statistics** are described in more detail over the next few pages.



CUSTOM FILTERS

Clicking on the Edit button in the menu bar will allow you to create custom filters.

Main Filters will allow you to filter hands by basically any criteria you could imagine:

The custom filters can be saved for later use by clicking the **Save As** button. You can **Load** a saved filter to change it as many times as you want, and create variations on your favourite filters. Once you save a filter, it will appear in the Filter drop down menu in the main toolbar above the report.

As well as the **Main Filters** you can filter by Hold'em **Hole Cards**, as shown on the next page.



The **Hole Cards** Filter (only for Texas Hold'em) will allow you to create custom filters that only select a certain range of hands, by clicking on the hands you wish to filter. These can be combined with the **Main Filters** tab to give you a virtually unlimited scope of hand analysis.

QUICK FILTERS TOOLBAR:

In the menu toolbar you will see the icon displayed above. Clicking on this icon will bring up the **Quick Filters** toolbar (Shown left).

This toolbar allows you to quickly apply or remove filters to the current report.

Simply check the box of whichever filter you want applied (or removed) and the report will automatically change accordingly.

To hide the Quick Filters toolbar, simply click the icon again.



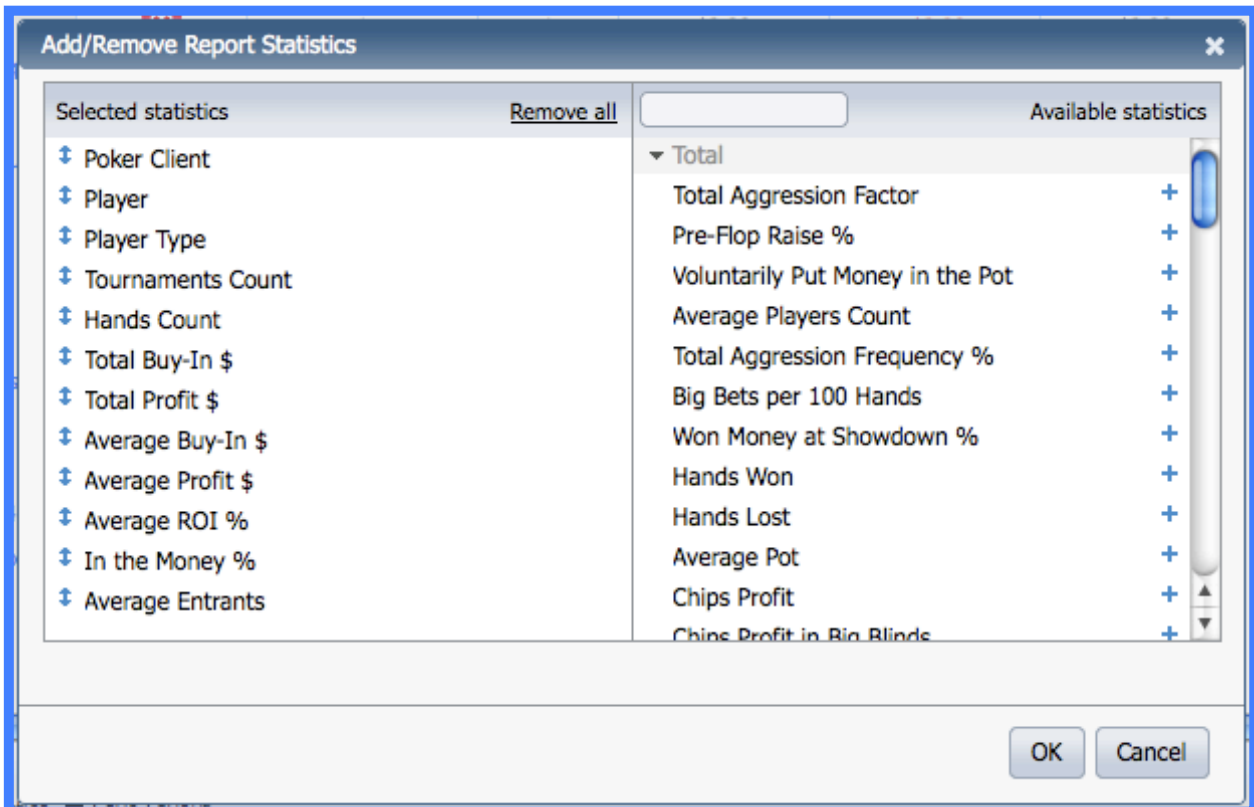
CUSTOM STATISTICS

At the bottom of each report, you will see the [Change Statistics](#) and [Save Layout](#) buttons.

mio999		1	2	\$2.20	-\$2.20	\$2.20	-\$2.20	-100.0%	0.0%
MrDonFer		1	10	\$2.20	-\$2.20	\$2.20	-\$2.20	-100.0%	0.0%
truekyller		1	8	\$2.20	-\$2.20	\$2.20	-\$2.20	-100.0%	0.0%

Change Statistics Save Layout View 1 - 176 of 176

Clicking [Change Statistics](#) will bring up the following menu:



The default statistics already in the report will be shown on the left. You cannot remove these statistics, only change their order.

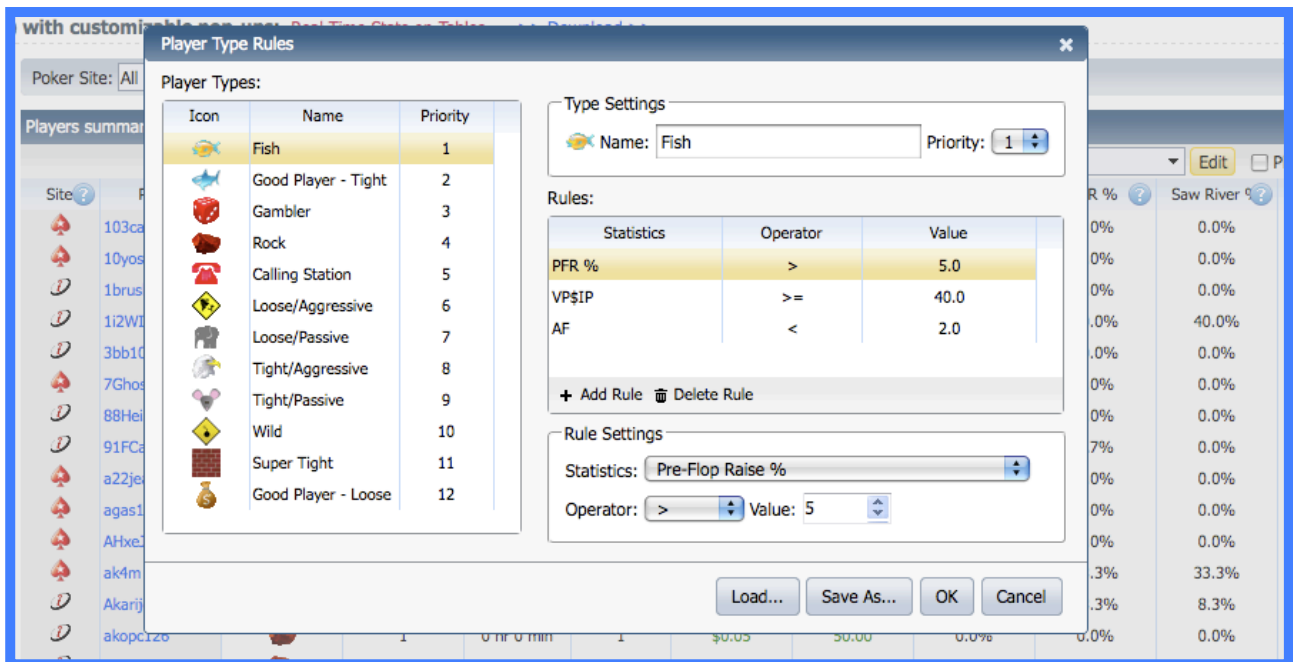
Statistics on the right are not currently in the report, and can be added with the + button. Once added to the report, to remove these stats, simply hit the - button. When you are done, hit **OK** and then click the [Save Layout](#) button. These statistics will be saved for this report only.

In the All Hands reports, instead of [Change Statistics](#), there will be [Columns](#). [Columns](#) works in the same way, simply choose which columns you would like to add and [Save Layout](#) afterwards



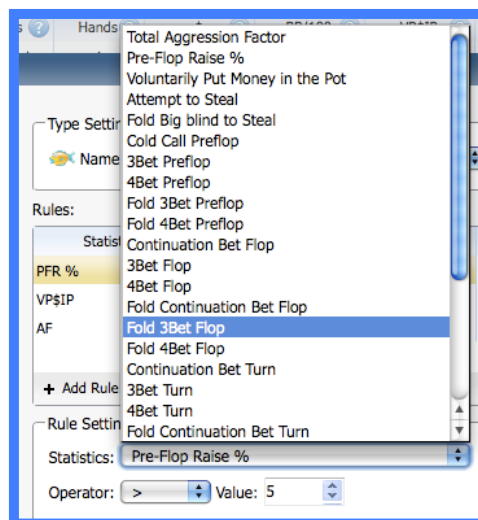
CUSTOMIZING PLAYER LABELS

You can also customize what criteria are needed in order to label a player with a certain Icon.



Click on the yellow **Edit** button next to the **Player Note Labels** to get this popup.

Select **+Add Rule** to add criteria for the player to fall into that category. A number of different statistics are available to categorize these players.



You can also re-arrange the priorities of the labels. As a default, Fish is the highest priority label, but you can make it whatever you want.

When you are done, click **Save As**, to save this criteria set. You can have many different player labeling systems and switch between them as you wish.



GLOSSARY

# of Tournaments	The number of tournaments played by the selected player or of the selected type
\$	Net amount won in the selected session in \$
3Bet F	Reraising a flop raise
4Bet F	Reraising a flop reraise
Action	Action Taken (Bet, Check, Raise, Reraise, All-In,Fold)
All-In	Betting all of your chips
Att to Steal	Raised in an attempt to steal the blinds
Avg. Buy-In	Average tournament buy in price
Avg. Entrants	Average number of tournament entrants
Avg. Player	Position where you have to post one big blind
Avg. Pot \$	Average number of players for hands played for level selected
Avg. Profit \$	Average profit in \$ per tournament
Avg. ROI %	Average Return on Investment in tournaments
BB Profit	Profit in terms of Big Blinds
BB/100	Big Blinds Won per 100 hands.
BBs	A big blind
Big Blind	The position where you have to post money (1bb) blind
Button	The dealer position (named after dealer button)
Buy In	Amount of money paid to enter tournament
Cards	The hole cards held
Cbet F	Betting the flop after putting in the final raise preflop
Cbet T	Betting the turn after putting in the final raise preflop and betting F
Cbet R	Betting the river after putting in the final raise preflop and betting T
Cutoff	The position before the button
CCPF	Cold Call (Call a preflop raise) Preflop
Early Position (EP)	First to act in 6 Max (or First 2 to Act in 9 Max)
Entrants	Number of people who entered the tournament
Equity	The % of you winning the pot
EV	How much you'd mathematically expect to win long run with a move
EV \$ Diff	Difference between expected value and real outcome
Flop (F)	The first 3 community cards
Fold BB to St	How often a player folded their BB when someone Att to Steal
Hands	Number of hands played
Hands Lost %	What percentage of hands played were lost
Hours	How long a session or tournament went for
ITM%	Percentage a player finished tournament In The Money
Level	The blind level for the tournament (constantly increasing)
Middle Position	The position before the Cutoff (or 3 positions in 9 Max)
PFR	Preflop raise
Pos.	Position. Where you are sitting at table in relation to big blind
Prize	Money won from the tournament
Profit	Money won. In tournaments this = Prize - Buyin.
River (R)	The last community card dealt
Session	A single duration of time that poker was played for
Site	Which poker site the hands were played on



Small Blind	Half a big blind. Can also mean the position in which someone has to post the Small Blind.
Stakes	The size of the big blind at that table.
Total AFq%	Total aggression frequency (how often a person raised rather than called/checked)
Tournament	The specific ID number of the tournament
Turn	Fourth community card
Type	What type of tournament was entered
VP\$IP	Voluntarily Put Money In Pot: The % of hands that a player chose to play preflop (doesn't include hands that they were forced to post money in the big blind)
W\$SD	% of time that money was won when showdown was seen
Win %	How often a player won the hand