



Application notes

Ericsson / MediaKind RX8200

Upgrade to FW version 8.25.1

June 2020

Contents

1	INTRODUCTION	1
2	PREPARATION	1
3	UPGRADE PROCEDURE	1
	3.2.1 Compatibility.....	1
	3.2.2 Installation.....	2
	3.2.3 Quick user guide.....	5
	3.2.3.1 STEP 1 - Find Device on Network	5
	3.2.3.2 STEP 2 - Select Bank for upgrade	5
	3.2.3.3 STEP 3 - Upgrade Units.....	8

1 INTRODUCTION

This application note describes the installation process of firmware version 8.25.1 for the Ericsson / MediaKind RX8200 decoder.

2 PREPARATION

- Download the upgrade files:
<https://www.eurovision.net/insights/technical/biss-ca-migration-files-download>
- Ensure that management IP address is set manually and DHCP is disabled
- Connect the PC to the decoder's RX8200 10/100BaseT management port. Ensure they are on the same IP subnet and have connectivity.

3 UPGRADE PROCEDURE

Note: All steps must be followed exactly for proper unit operation.

3.1 Overview

- Save any configuration in the unit before initiating upgrade process.
- Do not make any changes to configuration during upgrade process.
- Ensure that the unit is not in use before commencing the upgrade. Upgrading the device will interrupt its normal operation.
- Install software with Upgrade Utility as shown in section 3.2
- Refresh your web page to reconnect the unit. In order to confirm that the SW version was upgraded, check in the unit menu *Device Info> Build> SW version*.

3.2 Install software with Upgrade Utility

3.2.1 Compatibility

The Upgrade Utility will upgrade units running software version 5.12 or later releases only.

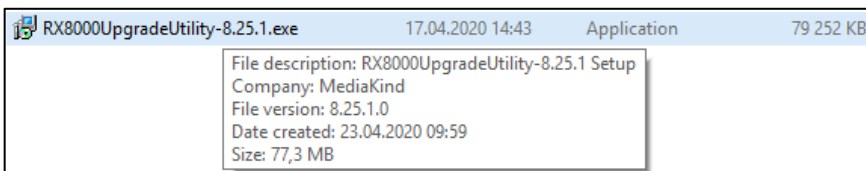
For older SW versions, please follow the manual upgrade method.

3.2.2 Installation

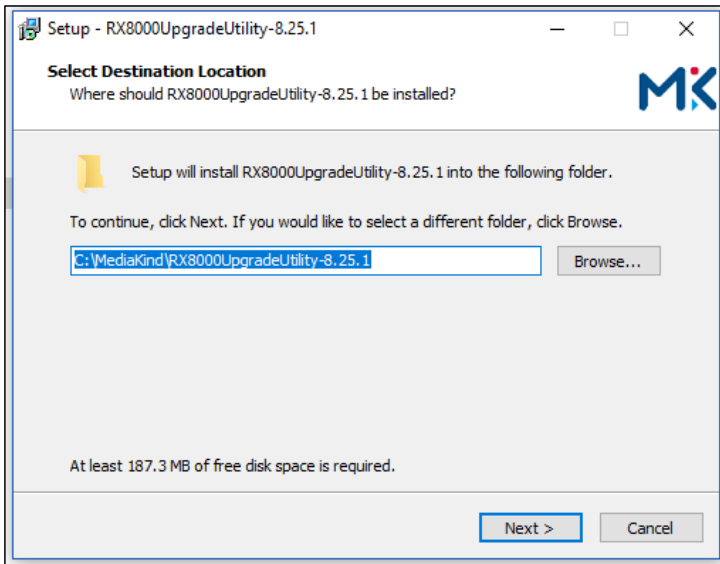
The RX8000 unit Upgrade Utility is distributed as an .EXE file that will install the correct Java environment on a Windows PC. It is not supported on any MacOS or on any virtual machine running on MacOS.

Please follow these steps to install Upgrade Utility:

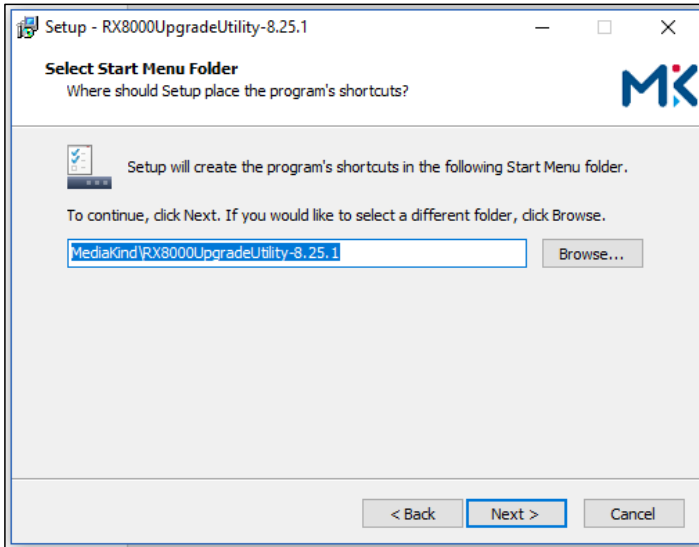
- Double click the RX8000 unit upgrade utility exe file to run the installer (e.g. the file called *RX8000UpgradeUtility-8.25.1.exe* for version 8.25.1 distribution)



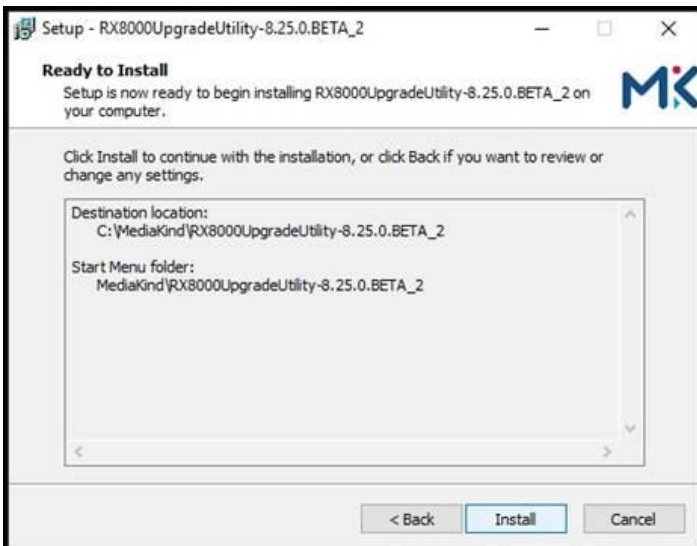
- Set up the target installation folder then click **Next**.

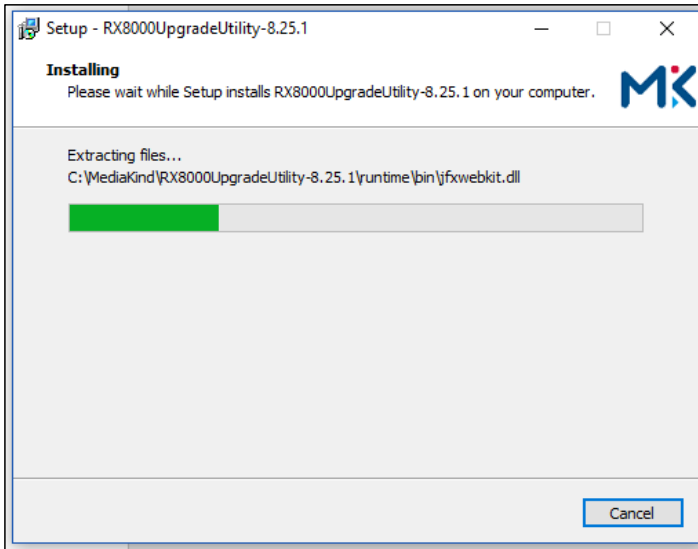


- Set up the shortcut path for the start menu folder then click **Next**.

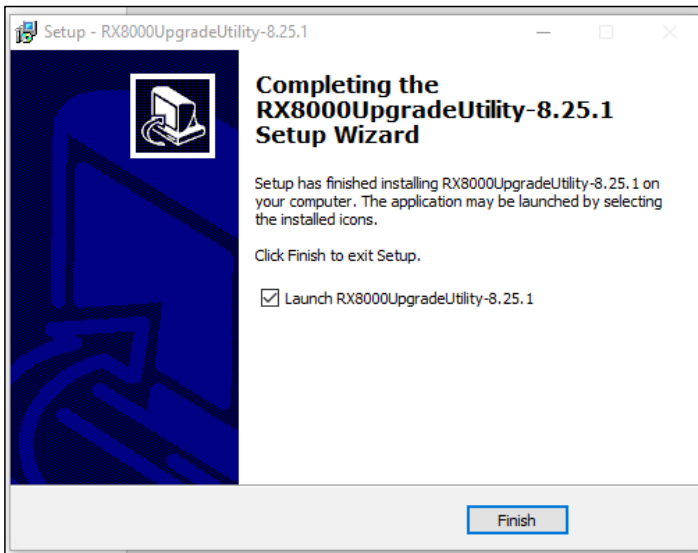


- When you are ready to proceed with the installation, click **Install**.



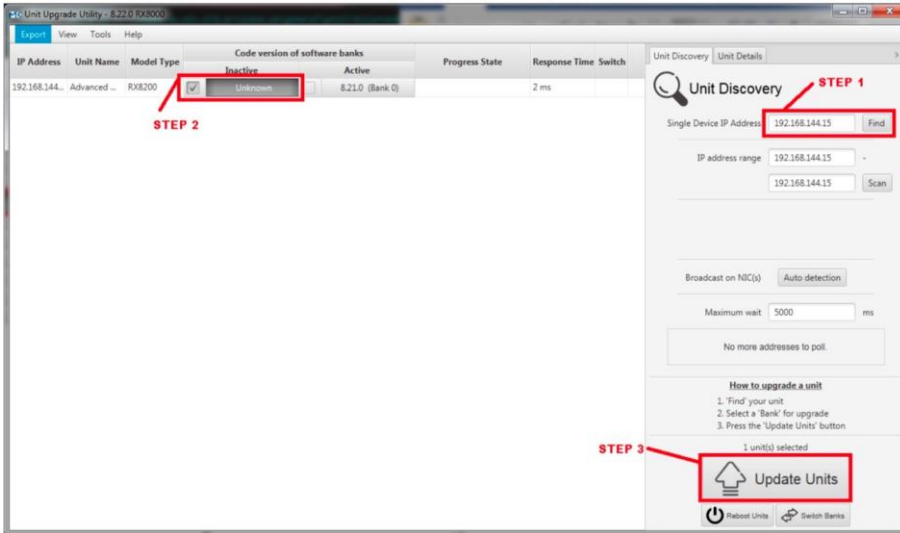


- Click **Finish** when the installation is finished.



To launch the upgrade utility, navigate to the **RX8000UpgradeUtility-8.25.1** program from the Windows Start menu e.g. *Start>All Programs>Ericsson* or the shortcut path specified in the step above

3.2.3 Quick user guide



3.2.3.1 STEP 1 - Find Device on Network

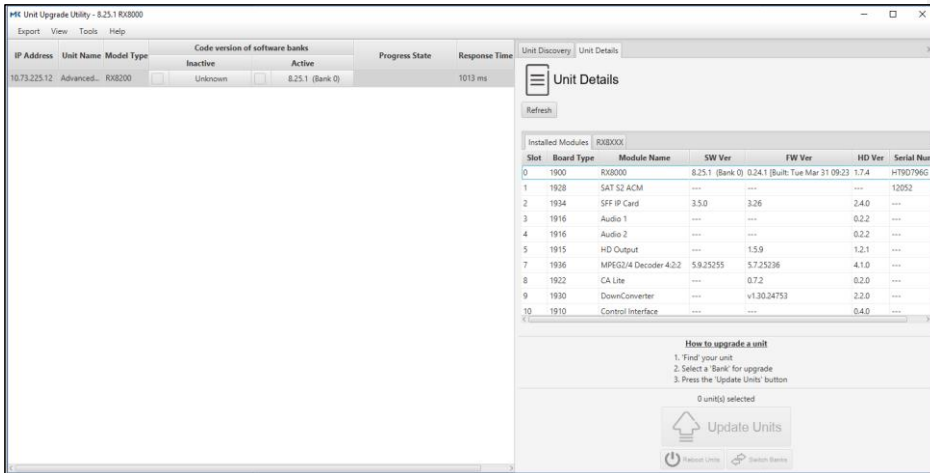
Go to the **Unit Discovery** tab and enter the IP address of the device in the **Single Device IP address** field then click the **Find** button.

The device should appear in the left pane with expected **Model Type**.

3.2.3.2 STEP 2 - Select Bank for upgrade

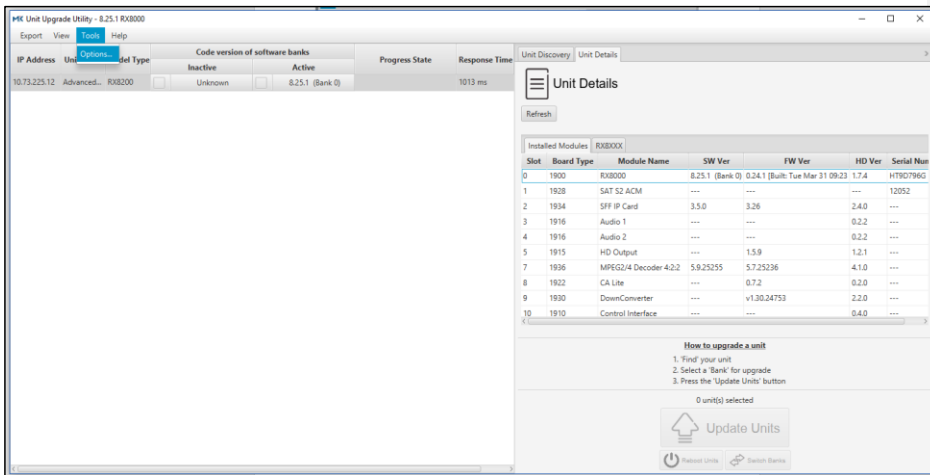
All devices discovered on the network are listed on the left side on the left pane of the unit upgrade utility.

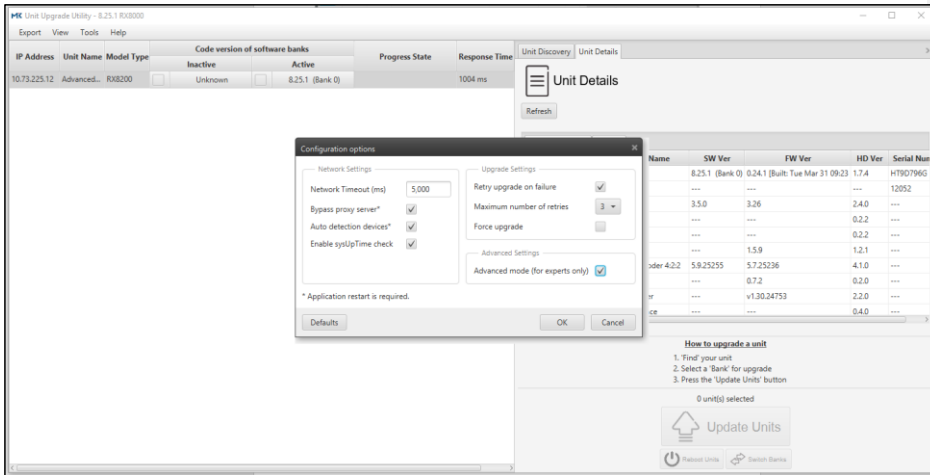
Commented [OP1]: it looks like the pane is on the right-hand side???



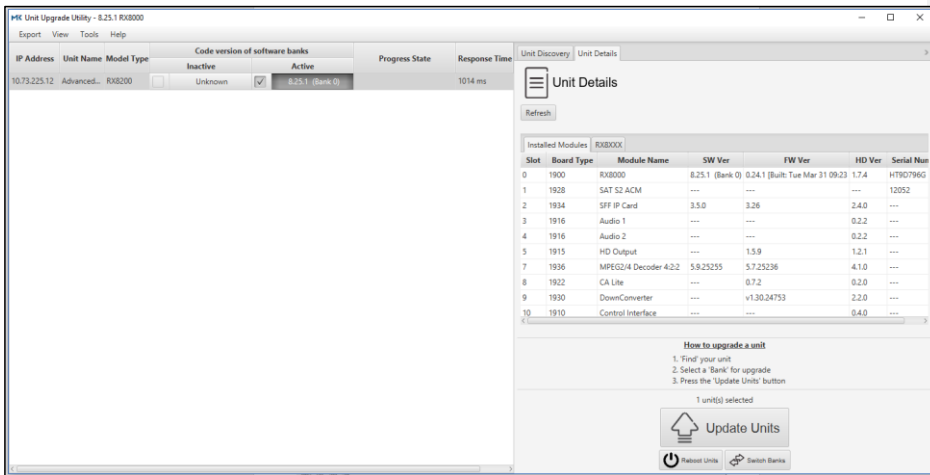
By default, only the Inactive software bank can be selected.

See *Advanced Mode* in the *Configuration Options* to expose the active software bank. For that, go to the tab *Tools > Options*

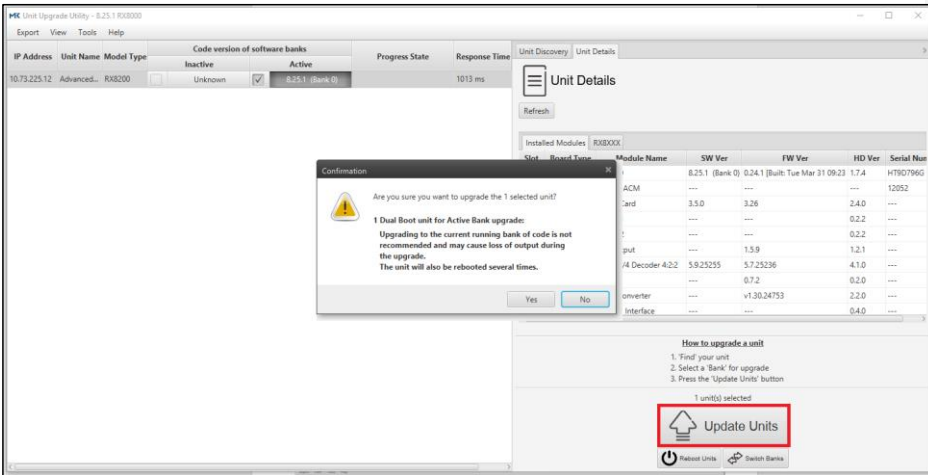




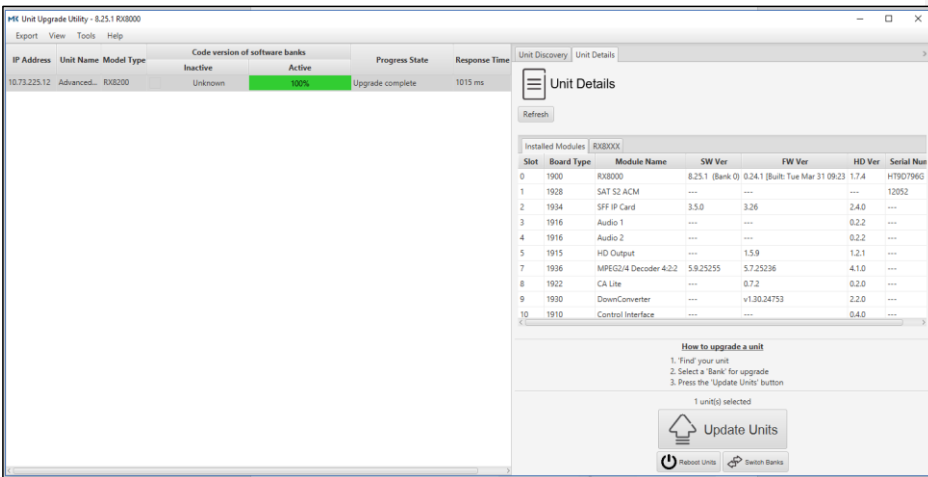
Tick the **Inactive** or **Active** software bank column for the device to be upgraded. The selected software bank will become the active software bank after the upgrade is complete and the device has rebooted.



3.2.3.3 STEP 3 - Upgrade Units



Click the **Update Units** button at the bottom right-hand side of the upgrade utility. When a device is selected for upgrade, the wizard determines what cards are installed on the device and upgrades all cards to the versions contained in the distribution package.



Note: The upgrade utility does not allow the user to pick and choose which modules to upgrade. All fitted modules will be upgraded.

Once the new software version is confirmed, it is safe to reboot the RX8200 if desired.