

Adapters

The Red Head Brass Commitment to Quality and Safety in Aluminum Adapters

All aluminum adapters are not created equal. The Red Head Brass *quality advantage* is built into every aluminum adapter we sell. Look for the following features:

All Red Head aluminum adapters are **hardcoat anodized** per **MIL-A-8625 Type III, Class 1**. No dye or coloring is used. This process provides the completed part with a **hardened surface** that resists corrosion, abrasion, and reduces electrolysis. It also prevents excessive wear on the threads. Complies with **NFPA 1963, 4.12 Corrosion Resistance**.

NO PLAIN ANODIZE, PAINTED OR POWDER COATED FINISHES!!

Swivels are attached as follows:

1" thru 2" with **6061-T9 aluminum piston rings**.

2½" thru 3½" with **#316 stainless steel ball bearings**.

4" thru 6" with **6262-T9 aluminum roller bearings**.

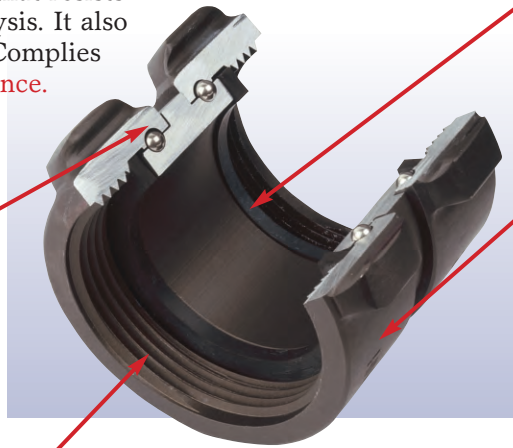
NO PLASTIC BEARINGS!!

Made from **6061-T6 aluminum seamless extrusions**.

Meets ASTM B221.

Lathe cut synthetic or EPDM gaskets.

Permanent roll stamp marking. Part identification is stamped into the aluminum prior to hardcoat finish. Complies with **USDA 5100-190 C 3.4**.



Threads conform to the following specifications, including a blunt start first thread known as the Higbee located in line with the Higbee indicator on the lug.

- **Federal Handbook H28/10**
- **USDA 5100-190 C Tables 1-4**
- **NFPA 1963 5.1 thru 5.6.4**
- **UL 236 8.1 thru 8.2**

Adapters with rocker lugs have:

- 2 lugs on sizes ¾" and 1"
- 3 lugs on sizes 1½" thru 3"
- 4 lugs on sizes 4" thru 6"

Style 35

Double Swivel Female

Available Sizes:
1" thru 6"



Style 36

Double Male

Available Sizes:
¾" x 1" thru 6"



Style 37

Rocker Lug Female by Male

Available Sizes: ¾" x 1" thru 6"

RED HEAD SPECIFICATIONS: Aluminum Adapters shall be fabricated from seamless extruded 6061-T6 aluminum and hardcoat anodized per MIL-A-8625 Type III, Class 1. Threads shall be blunt start Higbee cut with indicators on adjacent lugs. Part identification shall be permanent and stamped prior to hardcoat. Swivel attachment must be metal rings or bearings, not swaged. Gaskets shall be lathe cut ozone free EPDM or synthetic rubber. Adapters and components must meet the requirements of NFPA 1963.



Style 53 RL

Rocker Lug Swivel Female to Rocker Lug Rigid Female

Available Sizes:
1½" thru 6"



Style 54

Long Handle Swivel Female to Male

Available Sizes:
2½" thru 6"

Style 54RL

Rocker Lug Swivel Female to Male

Available Sizes:
1½" thru 6"



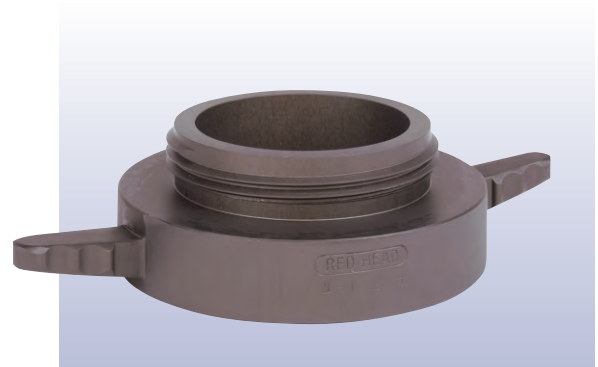
Style 56

Rigid Long Handle Female to Male

Available Sizes:
4" x 2½" thru 6" x 6"

Configurations and features:

- Ideal for changing hydrant or suction hose threads or sizes.



Style 57

Long Handle Double Swivel Female

Available Sizes:
2½" thru 6"

Configurations and features:

- Ideal for adapting male hydrant or suction hose threads to female hose thread.



Adapters

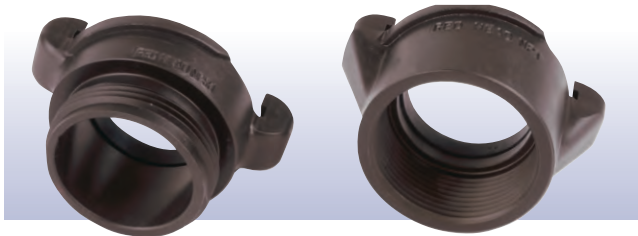
Style RHQK

Quick Connect External Lug Forestry Adapters

Available Sizes:
1½" connecting face x ¾", 1" or 1½" thread sizes

Configurations and features:

- External lugs for faster action, in a demanding field where quick connection counts.
- Red Head QK adapters are forged for heavy duty and dependability.
- ULC listed - 1½"
- Meets requirements of ULC-S551.



Style Cam and Groove

High Pressure Cam & Groove Adapters

Available Styles and Sizes:

Style A: Cam Male x Threaded Female
1½", 2", 2" x 1½" or 2½"

Style B: Cam Female x Threaded Male
1½", 2" or 2½"

Style D: Cam Female x Threaded Female
1½", 2", 2" x 1½" or 2½"

Style F: Cam Male x Threaded Male
1½", 2" or 2½"



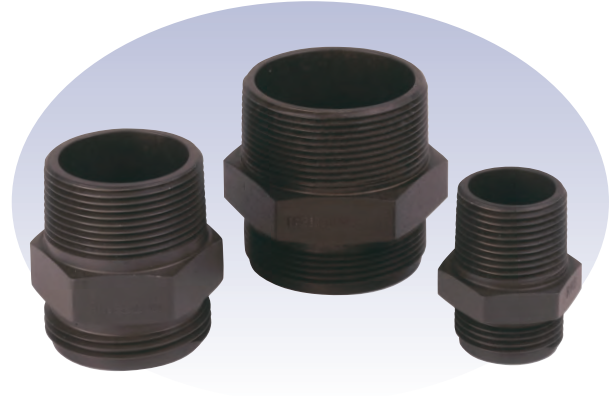
Configurations and features:

- All Cam & Groove connections conform to [A-A-59326B \(MIL-C-27487\)](#).
- Handles and pins are **316 stainless steel**.
- **Working pressure of 750 PSI.**

Style 36HEX

Aluminum Hex Double Males

Available Sizes:
1", 1½" and 2"



Style BIT

British Instantaneous Adapters



Available Styles and Sizes:

Style MF: BIT Male x Threaded Female
2½" BIT x 1½" thru 2½" THREAD

Style MM: BIT Male x Threaded Male
2½" BIT x 1½" thru 2½" THREAD

Style FF: BIT Female x Threaded Female
2½" BIT x 1½" thru 2½" THREAD

Style FM: BIT Female x Threaded Male
2½" BIT x 1½" thru 2½" THREAD

Configurations and features:

- All 2½" connections conform to the **BS 336 standard**.
- **Working pressure of 15 BAR or 218 PSI.**



The Red Head Brass Commitment to Quality and Safety in Brass Adapters

Red Head Brass adapters are made of rugged brass castings of *Alloy C83600 ASTM B62* or *C84400* to *ASTM B584* or *ASTM B505 (QQ-C-390)* except where noted. Selected Hex style adapters made from *yellow brass rod* material to *C36000* to *ASTM B16*. All brass adapters are machined to the same high quality as our lightweight aluminum adapters.

Style BR35 *Double Swivel Female*

Available Sizes
1 1/2", 2 1/2" x 1 1/2" and 2 1/2"

Configurations and features:

- Available in Rocker Lug.
- 2 1/2" double female swivels are machined from **high quality forgings** of *Alloy C37700 ASTM B124 (QQ-B-626D)*.

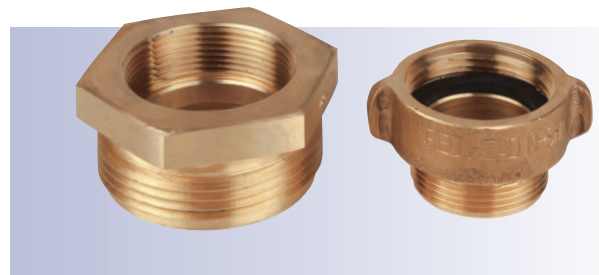


Style BR37 *Rigid Female to Male*

Available Sizes:
1 1/2" x 3/4" thru 2 1/2" x 2 1/2"
in Rocker Lug.
1" thru 2 1/2" in Hex Style.

Configurations and features:

- Available in Rocker Lug and Hex Style.



Style BR36 *Double Male*

Available Sizes:
1 1/2" or 2 1/2" in
Rocker Lug.
1" thru 2 1/2" in Hex Style.

Configurations and features:

- Available in Rocker Lug and Hex Style.



Style BR53 *Female RL Swivel to Rigid Female Hex*

Style BR54 *Female RL Swivel to Male Hex*

Available Sizes: 1 1/2" and 2 1/2"



Adapters

The Red Head Brass Commitment to Quality and Safety in Storz Adapters

Quality and durability are constructed into every Storz adapter from Red Head Brass. Look for the features below and insist on the highest quality, safest Storz adapters available.

All aluminum components are **Hardcoat Anodized** per **MIL-A-8625 Type III, Class 1**.

NO PLAIN ANODIZE, PAINTED OR POWDER COATED FINISHES!!

Threads conform to the following specifications, including a blunt start first thread known as the Higbee located in line with the Higbee indicator on the lug.

- **Federal Handbook H28/10**
- **USDA 5100-190 C Tables 1-4**
- **NFPA 1963 5.1 thru 5.6.4**
- **UL 236 8.1 thru 8.2**

All swivels are attached with metal bearings.

Swivels are attached as follows:

2½" thru 3½" with #316 stainless steel ball bearings.

4" thru 6" with 6262-T9 aluminum roller bearings.

NO PLASTIC BEARINGS!!



High quality molded Storz gaskets made using **Buna-N** material. This material is resistant to most hydrocarbons, oils, gasoline, acids and greases.

Stainless Steel Lock Lever assembly on all 4", 5" or 6" Storz adapters.

- **Lock Lever** is an investment casting of 304 stainless steel **ASTM A743**.
- **Lock Lever Spring** is 316 stainless wire passivated **AISI 316**.
- Lock lever mounted with **18-8 stainless steel shoulder bolt**.

All Storz heads are **forged 6061-T6 aluminum** to **SAE-AMS-QQ-A-367** and **ASTM B247**.

Complies with **DIN standards** which require that Storz heads must **be forged** when used in firefighting applications.

Style S-36 Storz to Rigid Male

Available Sizes:
1½", 2½", 4",
5", 6"



Style S-37 Storz to Rigid Female

Available Sizes:
1½", 2½", 4",
5", 6"



Style S-54

*Storz to Long Handle
Swivel Female*

Available Sizes:
2½", 4", 5", 6"



Style S-54RL

*Storz to Rocker Lug
Swivel Female*

Available Sizes:
2½", 4", 5", 6"

Style SS

Storz to Storz

Available Sizes:
1½", 2½", 4", 5", 6"



Continuous swivel Storz connection available on 4", 5" or 6" at additional charge.

RED HEAD SPECIFICATIONS: Aluminum Storz Adapters shall consist of Storz coupling heads machined from forged 6061-T6 aluminum and adapter components fabricated from seamless extruded 6061-T6 aluminum. All aluminum components shall be hardcoat anodized per MIL-A-8625 Type III, Class 1. Threads shall be blunt start Higbee cut with indicators on adjacent lugs. Part identification shall be permanent and stamped or forged prior to hardcoat. Swivel attachment must be stainless steel ball or 6269-T9 aluminum roller bearings, not swaged. All 4", 5" and 6" adapters shall include a stainless steel external spring-loaded lock. Storz gaskets shall be molded Buna-N rubber. Face gaskets shall be lathe cut ozone free EPDM or synthetic rubber. Adapters and components must meet the requirements of NFPA 1963.